

Orlando Health Bayfront Hospital

Women's Health Pavilion at Bayfront Hospital
570 8th Street S | St. Petersburg, FL

Medical Pavilion
725 6th Avenue S | St. Petersburg, FL

12,062-54,287 SF of Move-in Ready, Never
Occupied Medical Office



CBRE



Property Overview

Located in the heart of downtown St. Petersburg, Bayfront Medical Emergency & Trauma Center is part of the renowned Orlando Health Bayfront Hospital, a 480-bed tertiary academic medical center serving the Tampa Bay region since 1906.

This facility stands as Pinellas County's only state-accredited Level II Adult & Pediatric Trauma Center, offering 24/7 emergency services with cutting-edge technology and a highly skilled medical team.

The center is nationally accredited as a Comprehensive Stroke Center, and also features specialized units including:

- Level III Regional Perinatal Intensive Care Center
- Certified Chest Pain Center with PCI
- Level IV Epilepsy Center
- Advanced cardiac catheterization labs
- Extensive diagnostic imaging and surgical suites

Strategically positioned within the St. Petersburg Innovation District, the location offers excellent visibility, accessibility, and proximity to major roadways, public transit, and other healthcare institutions. The surrounding area is a vibrant mix of medical, academic, and research facilities, making it ideal for healthcare-related tenants seeking synergy and exposure.

Whether you're looking to lease space for clinical operations, medical offices, or support services, Bayfront Medical Emergency & Trauma Center provides a premier location with unmatched credibility and infrastructure..

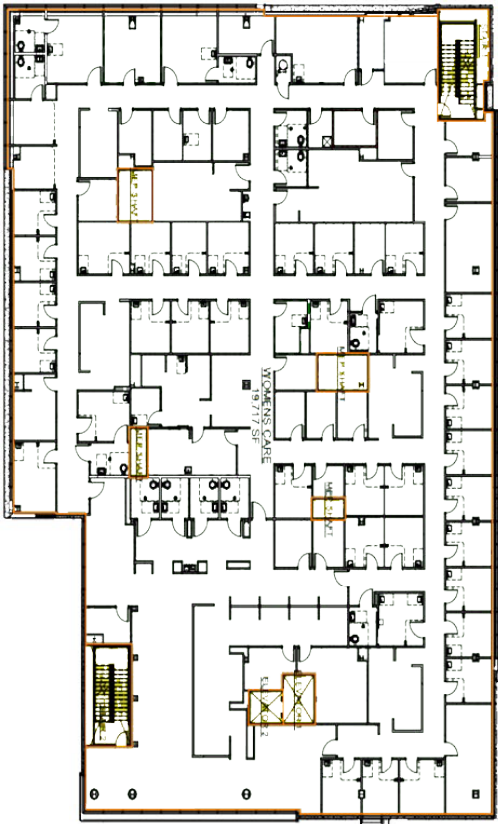
Sublease Highlights

- Two brand new spaces totaling approximately 12,062 - 54,287+ SF Available
 - Suite 2000 & Suite 3000 located in the Women's Health Pavilion at Bayfront Hospital totaling approximately 42,225 RSF
 - Suite 3400 located in the Medical Pavilion totaling approximately 12,062 RSF
- Immediate Availability
- Lease Expiration: Oct 2040

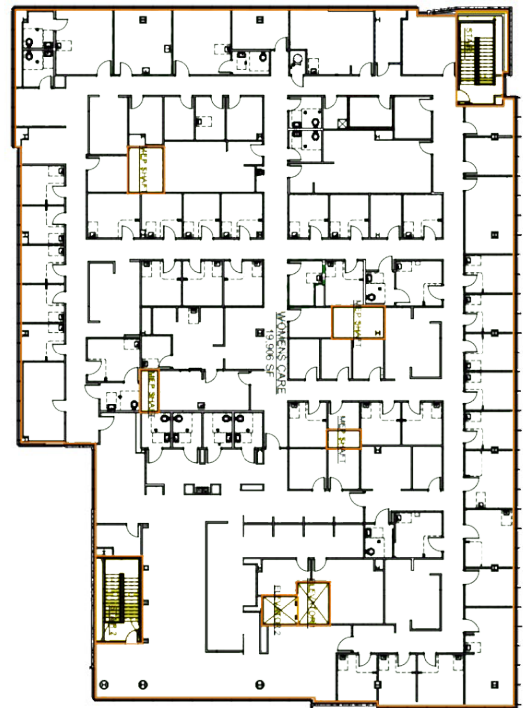
Floor Plan

FLOOR PLAN
FLOOR PLAN
FLOOR PLAN
FLOOR PLAN
FLOOR PLAN
FLOOR PLAN
FLOOR PLAN
FLOOR PLAN

Suite 2000 - 21,009 RSF

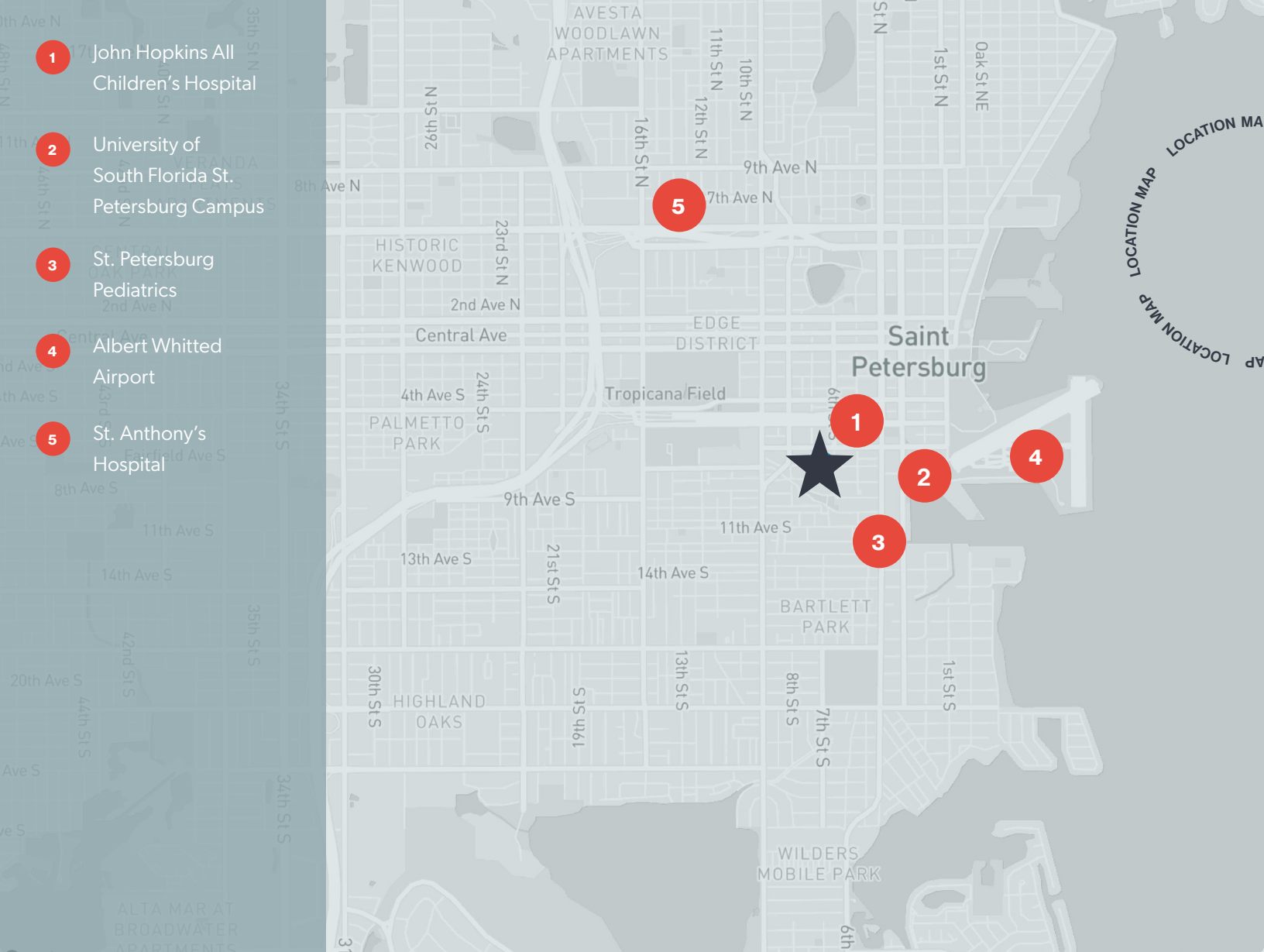


Suite 3000 - 21,216 RSF



Suite 3400 - 12,062 RSF





CONTACTS

Cody Warren

First Vice President
 +1 813 528 1072
 cody.warren@cbre.com

Alyssa Dominguez

Transaction Manager
 +1 850 530 0325
 alyssa.dominguez@cbre.com



© 2025 CBRE, Inc. All rights reserved. This information has been obtained from sources believed reliable but has not been verified for accuracy or completeness. CBRE, Inc. makes no guarantee, representation or warranty and accepts no responsibility or liability as to the accuracy, completeness, or reliability of the information contained herein. You should conduct a careful, independent investigation of the property and verify all information. Any reliance on this information is solely at your own risk. CBRE and the CBRE logo are service marks of CBRE, Inc. All other marks displayed on this document are the property of their respective owners, and the use of such marks does not imply any affiliation with or endorsement of CBRE. Photos herein are the property of their respective owners. Use of these images without the express written consent of the owner is prohibited.