

1255 High St.

1255 HIGH ST., WADSWORTH, OH 44281

FOR LEASE

Class A Office Building



PROPERTY HIGHLIGHTS

- New Construction - CLASS A OFFICE - on High Traffic Street
- 1,500 SF to 7,000 SF Available
- Build to Suit with Room for Imagination
- Access to Multiple Freeways
- Executive and Employee Housing Nearby
- Convenient Location to Retail and Business Amenities
- Available Spring 2023

OFFERING SUMMARY

Lease Rate:	\$20.00 - 24.00 SF/yr (MG)
Available SF:	1,500 - 7,000 SF
Lot Size:	2.042 Acres
Building Size:	31,000 SF



Steve Masica
PRINCIPAL
330.714.4415
steve.masica@sperrycga.com
OH #2013002150

Michelle Masica
PRINCIPAL/BROKER
216.293.8900 x1
michelle.masica@sperrycga.com
OH #2019006823

Each office independently owned and operated.

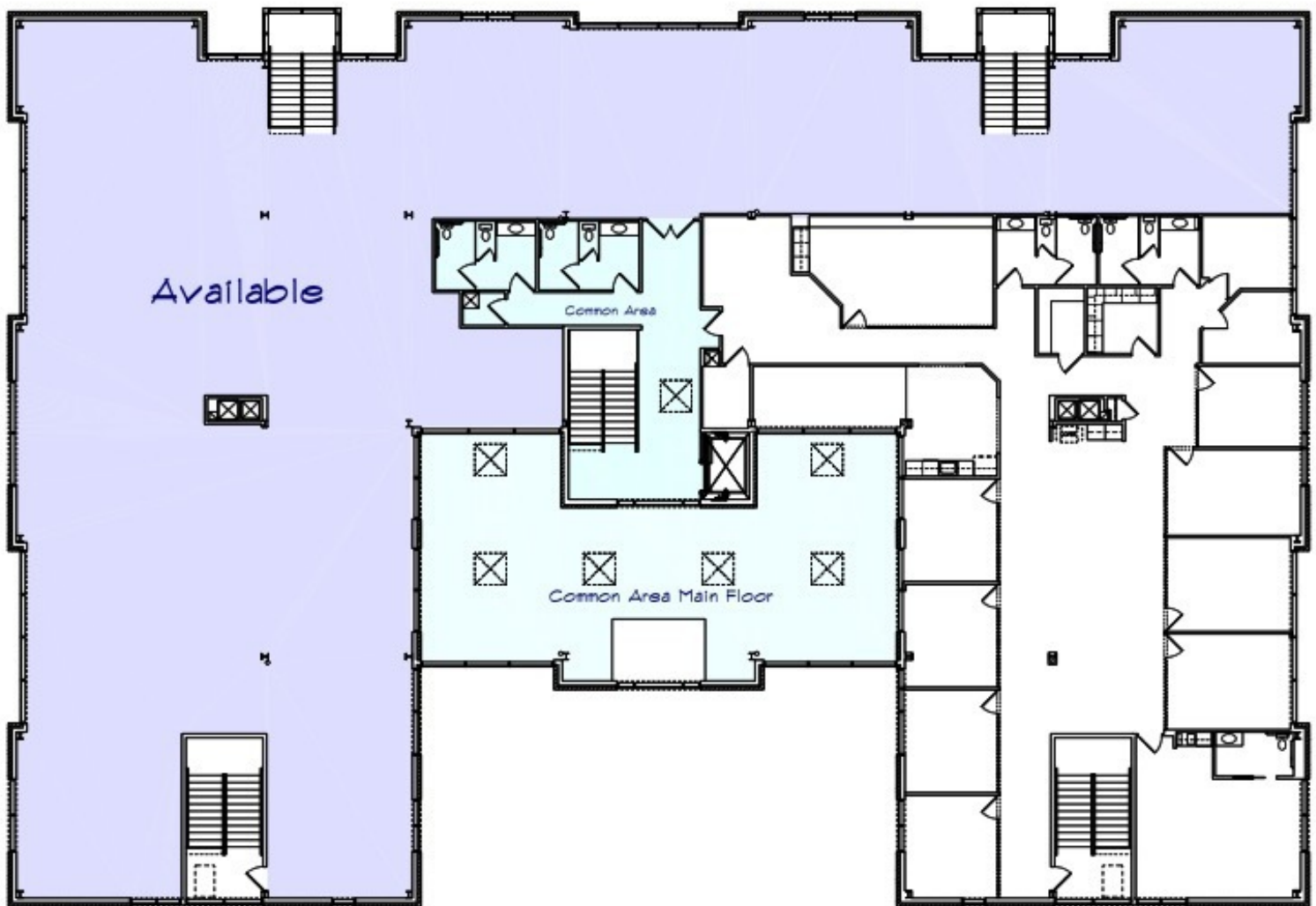
We obtained the information above from sources we believe to be reliable. However, we have not verified its accuracy and make no guarantee, warranty or representation about it. It is submitted subject to the possibility of errors, omissions, change of price, rental or other conditions, prior sale, lease or financing, or withdrawal without notice. We include projections, opinions, assumptions or estimates for example only, and they may not represent current or future performance of the property. You and your tax and legal advisors should conduct your own investigation of the property and transaction.

1255 High St.

1255 HIGH ST., WADSWORTH, OH 44281

FOR LEASE

Class A Office Building



Steve Masica
PRINCIPAL
330.714.4415
steve.masica@sperrycga.com
OH #2013002150

Michelle Masica
PRINCIPAL/BROKER
216.293.8900 x1
michelle.masica@sperrycga.com
OH #2019006823

Each office independently owned and operated.

We obtained the information above from sources we believe to be reliable. However, we have not verified its accuracy and make no guarantee, warranty or representation about it. It is submitted subject to the possibility of errors, omissions, change of price, rental or other conditions, prior sale, lease or financing, or withdrawal without notice. We include projections, opinions, assumptions or estimates for example only, and they may not represent current or future performance of the property. You and your tax and legal advisors should conduct your own investigation of the property and transaction.

1255 High St.

1255 HIGH ST., WADSWORTH, OH 44281

FOR LEASE

Office Building



Steve Masica
PRINCIPAL
330.714.4415
steve.masica@sperrycga.com
OH #2013002150

Michelle Masica
PRINCIPAL/BROKER
216.293.8900 x1
michelle.masica@sperrycga.com
OH #2019006823

Each office independently owned and operated.

We obtained the information above from sources we believe to be reliable. However, we have not verified its accuracy and make no guarantee, warranty or representation about it. It is submitted subject to the possibility of errors, omissions, change of price, rental or other conditions, prior sale, lease or financing, or withdrawal without notice. We include projections, opinions, assumptions or estimates for example only, and they may not represent current or future performance of the property. You and your tax and legal advisors should conduct your own investigation of the property and transaction.

1255 High St.
1255 HIGH ST., WADSWORTH, OH 44281

FOR LEASE

Office Building



Steve Masica
PRINCIPAL
330.714.4415
steve.masica@sperrycga.com
OH #2013002150

Michelle Masica
PRINCIPAL/BROKER
216.293.8900 x1
michelle.masica@sperrycga.com
OH #2019006823

Each office independently owned and operated.

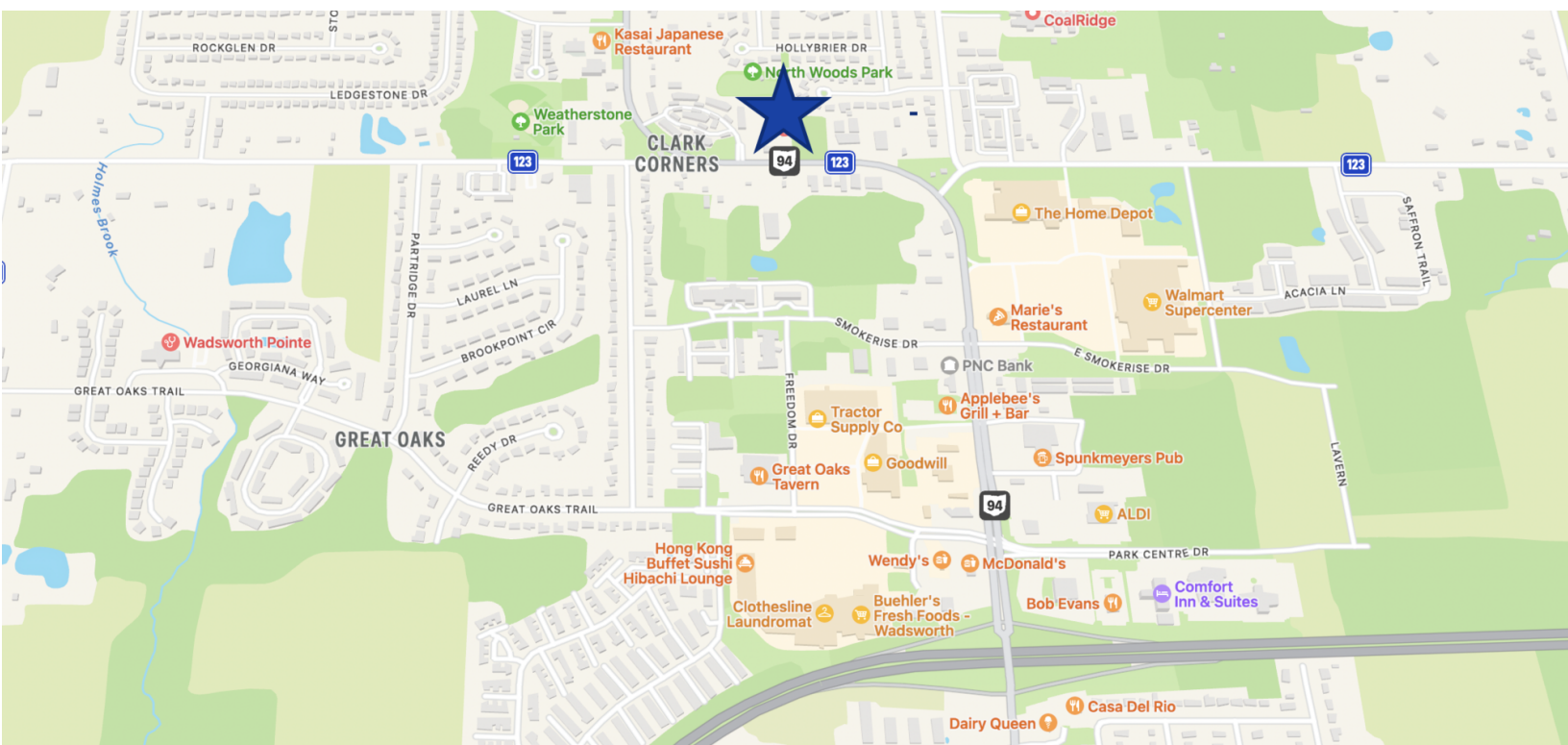
We obtained the information above from sources we believe to be reliable. However, we have not verified its accuracy and make no guarantee, warranty or representation about it. It is submitted subject to the possibility of errors, omissions, change of price, rental or other conditions, prior sale, lease or financing, or withdrawal without notice. We include projections, opinions, assumptions or estimates for example only, and they may not represent current or future performance of the property. You and your tax and legal advisors should conduct your own investigation of the property and transaction.

1255 High St.

1255 HIGH ST., WADSWORTH, OH 44281

FOR LEASE

Office Building



Steve Masica
PRINCIPAL
330.714.4415
steve.masica@sperrycga.com
OH #2013002150

Michelle Masica
PRINCIPAL/BROKER
216.293.8900 x1
michelle.masica@sperrycga.com
OH #2019006823

Each office independently owned and operated.

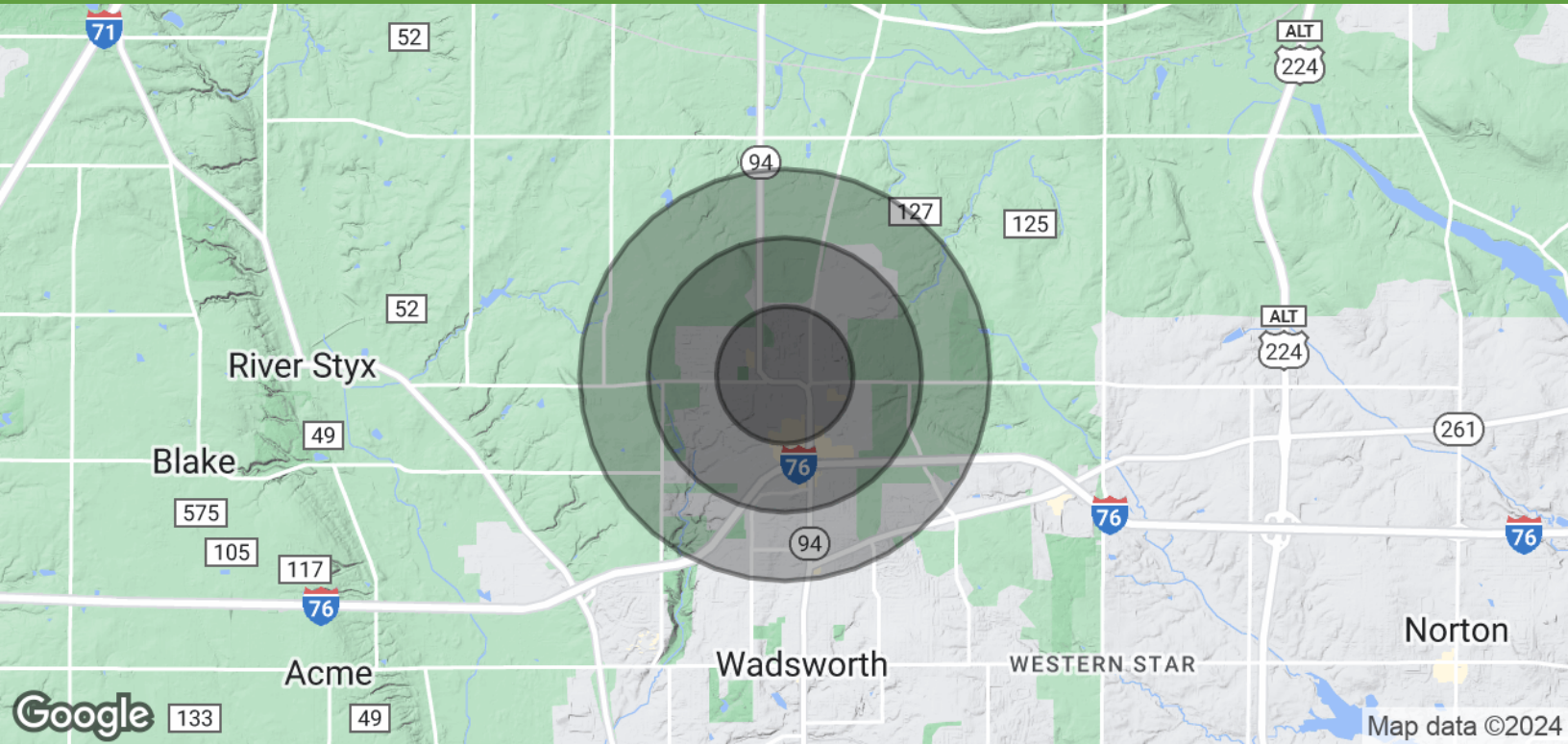
We obtained the information above from sources we believe to be reliable. However, we have not verified its accuracy and make no guarantee, warranty or representation about it. It is submitted subject to the possibility of errors, omissions, change of price, rental or other conditions, prior sale, lease or financing, or withdrawal without notice. We include projections, opinions, assumptions or estimates for example only, and they may not represent current or future performance of the property. You and your tax and legal advisors should conduct your own investigation of the property and transaction.

1255 High St.

1255 HIGH ST., WADSWORTH, OH 44281

FOR LEASE

Office Building



POPULATION

	0.5 MILES	1 MILE	1.5 MILES
Total Population	1,559	3,853	7,451
Average Age	48.3	46.9	45.2
Average Age (Male)	40.7	40.2	40.7
Average Age (Female)	48.8	48.8	47.4

HOUSEHOLDS & INCOME

	0.5 MILES	1 MILE	1.5 MILES
Total Households	695	1,751	3,375
# of Persons per HH	2.2	2.2	2.2
Average HH Income	\$92,455	\$87,956	\$86,208
Average House Value	\$235,854	\$223,728	\$208,748

* Demographic data derived from 2020 ACS - US Census



Steve Masica
PRINCIPAL
330.714.4415
steve.masica@sperrycga.com
OH #2013002150

Michelle Masica
PRINCIPAL/BROKER
216.293.8900 x1
michelle.masica@sperrycga.com
OH #2019006823

Each office independently owned and operated.

We obtained the information above from sources we believe to be reliable. However, we have not verified its accuracy and make no guarantee, warranty or representation about it. It is submitted subject to the possibility of errors, omissions, change of price, rental or other conditions, prior sale, lease or financing, or withdrawal without notice. We include projections, opinions, assumptions or estimates for example only, and they may not represent current or future performance of the property. You and your tax and legal advisors should conduct your own investigation of the property and transaction.