

# 469 ENTERPRISE COURT BLOOMFIELD TWP., MICHIGAN

HI-TECH FOR LEASE  
4,732 Square Feet Available



**SIGNATURE  
ASSOCIATES**  
KNOW SIGNATURE | KNOW RESULTS



## PROPERTY FEATURES

- 4,732 square feet available
- 2,000 square feet office
- 19'5" clear height
- (1) 10' x 14' grade level door
- Shared use of exterior truck dock
- Lease Rate: \$10.50/sq. ft. NNN



For more information, please contact:

**PAUL HOGE**  
(248) 948 0103  
paulhoge@signatureassociates.com

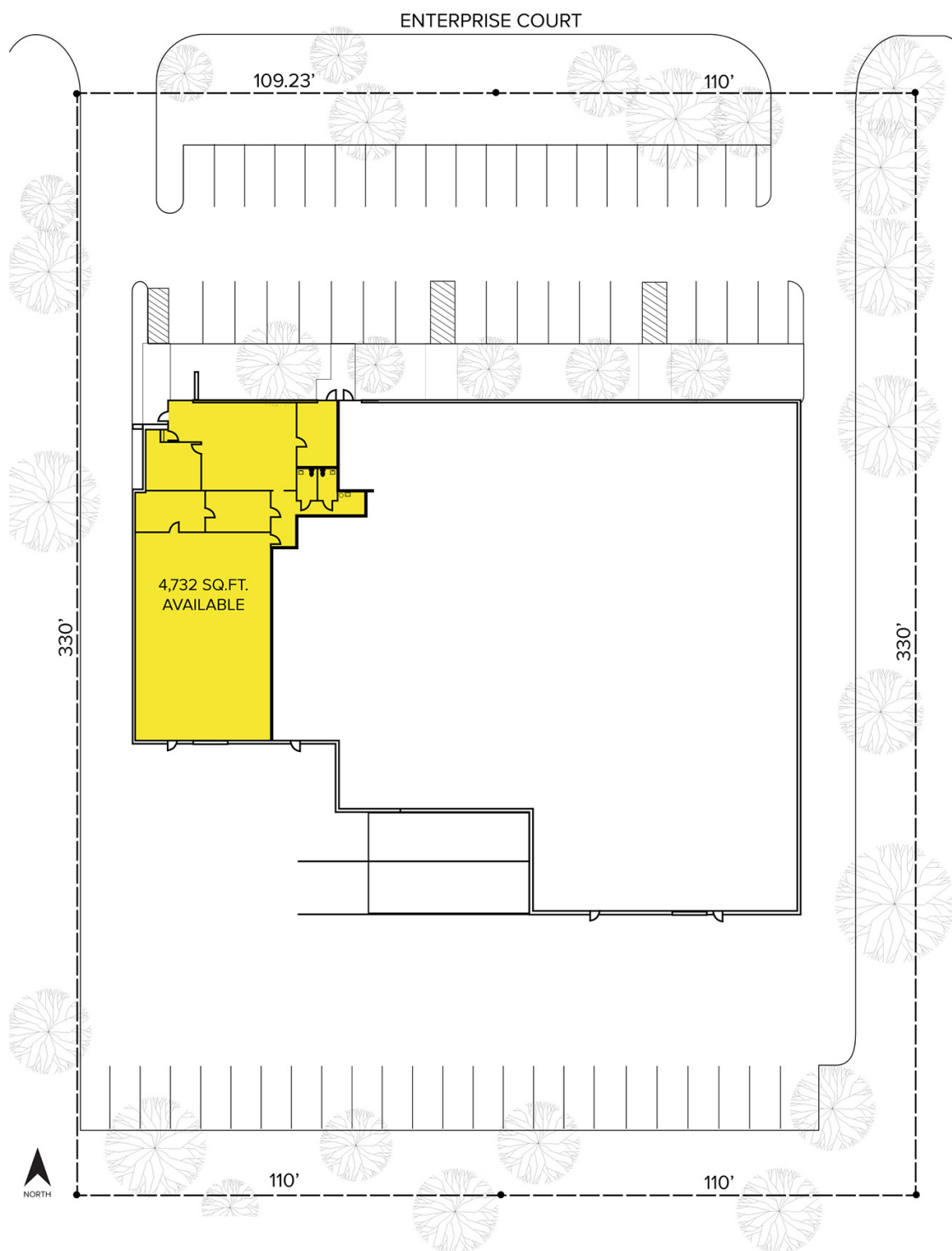
**SIGNATURE ASSOCIATES**  
One Towne Square, Suite 1200  
Southfield, MI 48076  
www.signatureassociates.com

# 469 Enterprise Court – Bloomfield Twp., Michigan

## Hi-Tech For Lease

4,732  
Square Feet  
AVAILABLE

### Site Plan



For more information, please contact:

**PAUL HOGE**  
(248) 948 0103  
paulhoge@signatureassociates.com

**SIGNATURE ASSOCIATES**  
One Towne Square, Suite 1200  
Southfield, MI 48076  
www.signatureassociates.com

Information is subject to verification and no liability for errors or omissions is assumed. Price is subject to change and listing withdrawal.

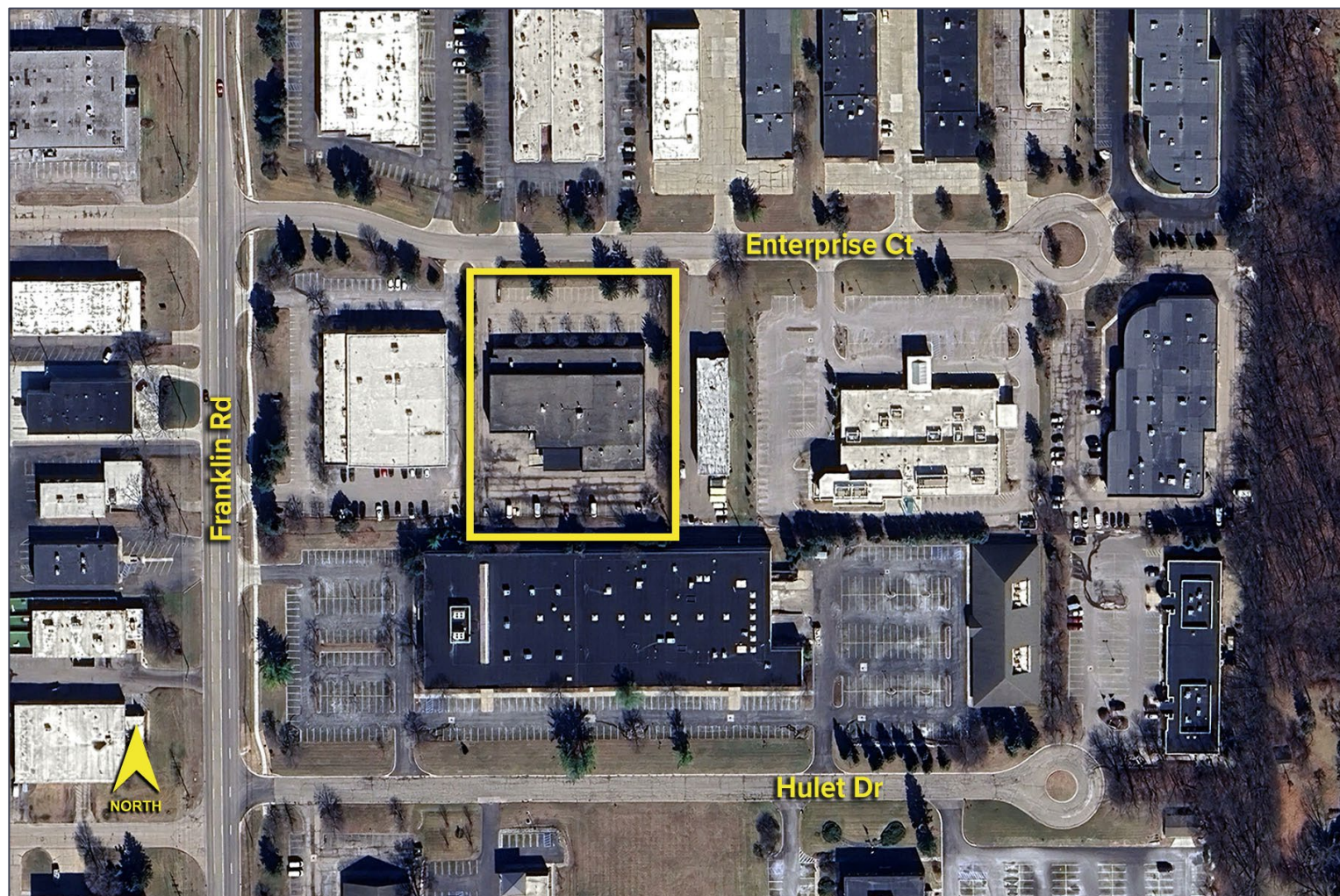


# 469 Enterprise Court – Bloomfield Twp., Michigan

## Hi-Tech For Lease

4,732  
Square Feet  
AVAILABLE

Aerial



For more information, please contact:

**PAUL HOGE**  
(248) 948 0103  
[paulhoge@signatureassociates.com](mailto:paulhoge@signatureassociates.com)

**SIGNATURE ASSOCIATES**  
One Towne Square, Suite 1200  
Southfield, MI 48076  
[www.signatureassociates.com](http://www.signatureassociates.com)

Information is subject to verification and no liability for errors or omissions is assumed. Price is subject to change and listing withdrawal.