

7901-09 SCHATZ POINTE DR  
WASHINGTON TOWNSHIP, OH 45459



**LEASE RATE: \$18.50 PSF FULL SERVICE**

## PROPERTY DESCRIPTION

Conveniently located at State Route 725, Yankee Road and I-675 with over 114,000 vehicles per day. The property has been well-maintained and the building has undergone numerous renovations.

## AVAILABLE SUITES

Suite #	Approx. SF	Lease Rate	Available
7901-B	1,915	\$18.50 PSF	7/1/2026

\*Full service rental rate includes CAM, taxes, insurance, and utilities

## PROPERTY HIGHLIGHTS

- Easily accessible **first floor office suites**
- Most suites offer signage and **parking right at the door**
- 30,000 square foot free-standing building with **over 150 parking spaces**
- Many top restaurants, banking, shopping, hospitals and hotels nearby
- Excellent location with **easy access to I-675 and State Route 725**
- Located within Washington Township- **no city income tax**

**PRESENTED BY:** **ASHLEY SCHNEIDER**  
Director of Sales & Leasing  
Direct: 312/343-1316  
Email: Ashley@cra-dayton.com

CRA-DAYTON.COM  
7071 Corporate Way, Suite 200 | Centerville, OH 45459  
Office: 937/433-9000

7901- 7905 SCHATZ POINTE DR - WASHINGTON TOWNSHIP, OH 45459

## PHOTOS- 7901-C



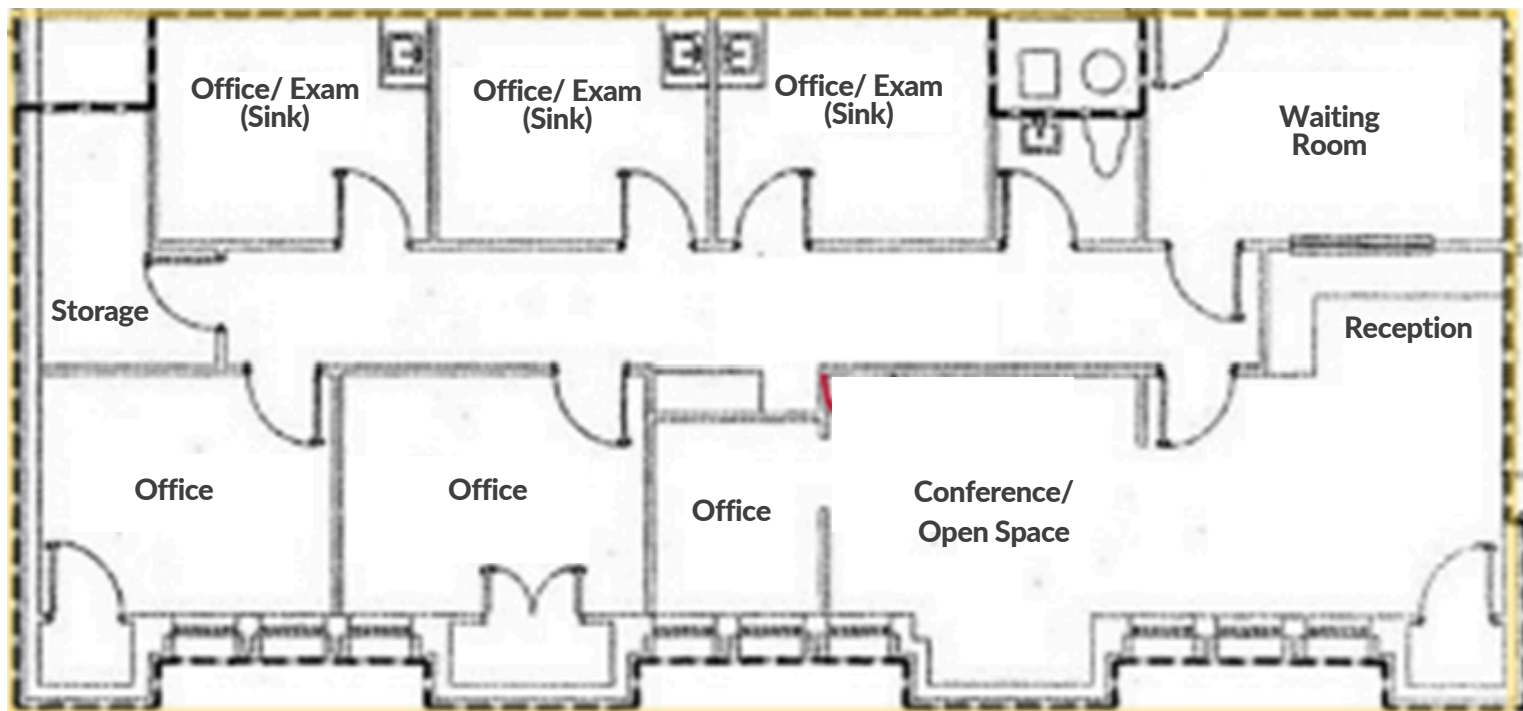
**PRESENTED BY:** **ASHLEY SCHNEIDER**  
Director of Sales & Leasing  
Direct: 312/343-1316  
Email: Ashley@cra-dayton.com

**CRA-DAYTON.COM**  
7071 Corporate Way, Suite 200 | Centerville, OH 45459  
Office: 937/433-9000

7901- 7909 SCHATZ POINTE DR - WASHINGTON TOWNSHIP, OH 45459

**FLOOR PLAN**

Entrance to suite



**PRESENTED BY:** **ASHLEY SCHNEIDER**  
Director of Sales & Leasing  
Direct: 312/343-1316  
Email: Ashley@cra-dayton.com

CRA-DAYTON.COM  
7071 Corporate Way, Suite 200 | Centerville, OH 45459  
Office: 937/433-9000

7901- 7905 SCHATZ POINTE DR - WASHINGTON TOWNSHIP, OH 45459



**PRESENTED BY:** **ASHLEY SCHNEIDER**  
Director of Sales & Leasing  
Direct: 312/343-1316  
Email: Ashley@cra-dayton.com

CRA-DAYTON.COM

7071 Corporate Way, Suite 200 | Centerville, OH 45459  
Office: 937/433-9000