

LANDLORD WILLING TO LEASE DIRECT FOR FIVE YEARS



MASTER LEASE EXPIRES 11/14/28



FOR SUBLEASE

SUITE C |  $\pm$ 1,800 SF

936 DETROIT AVENUE, CONCORD

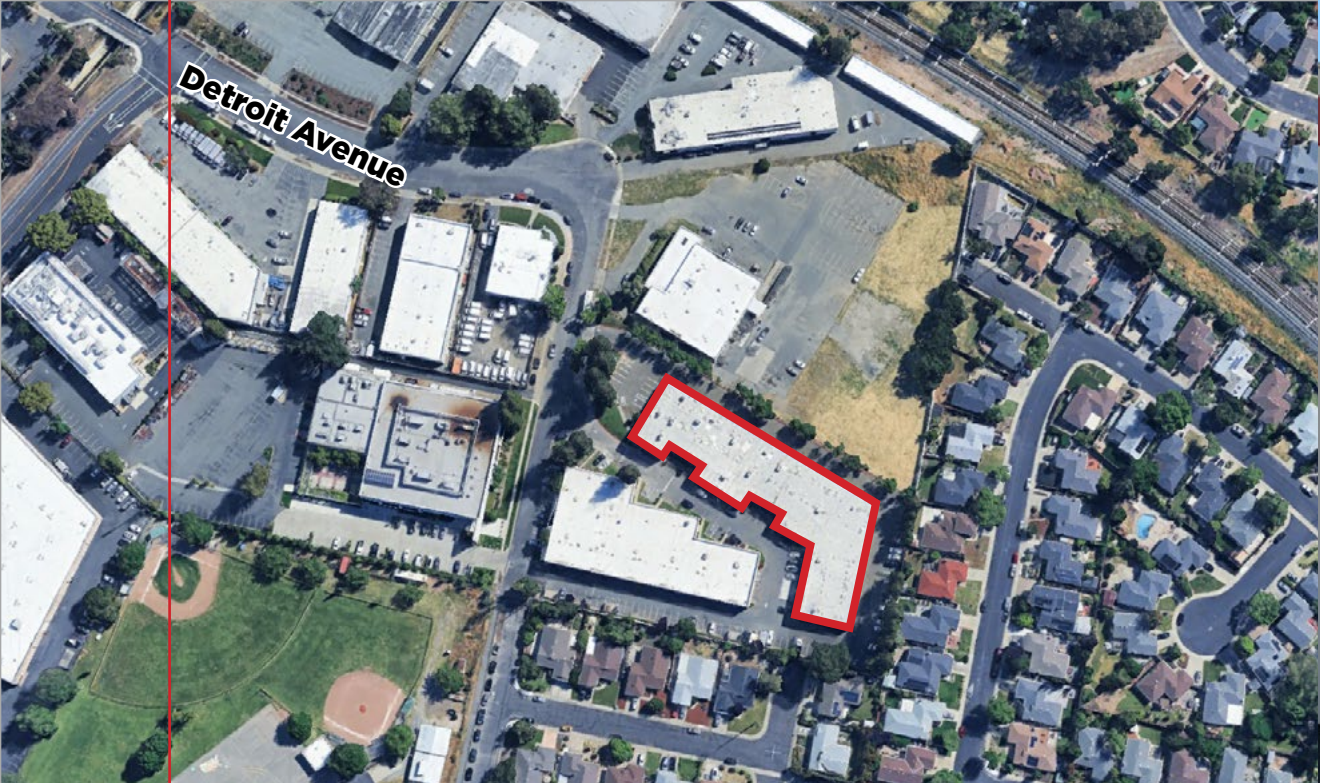
**JOSH MESSING**

Associate

925 849 2702

[josh.messing@cushwake.com](mailto:josh.messing@cushwake.com)

LIC. #02344579



## PROPERTY HIGHLIGHTS



±1,800  
Total SF



±400 SF  
Office



One (1)  
Grade Level Door



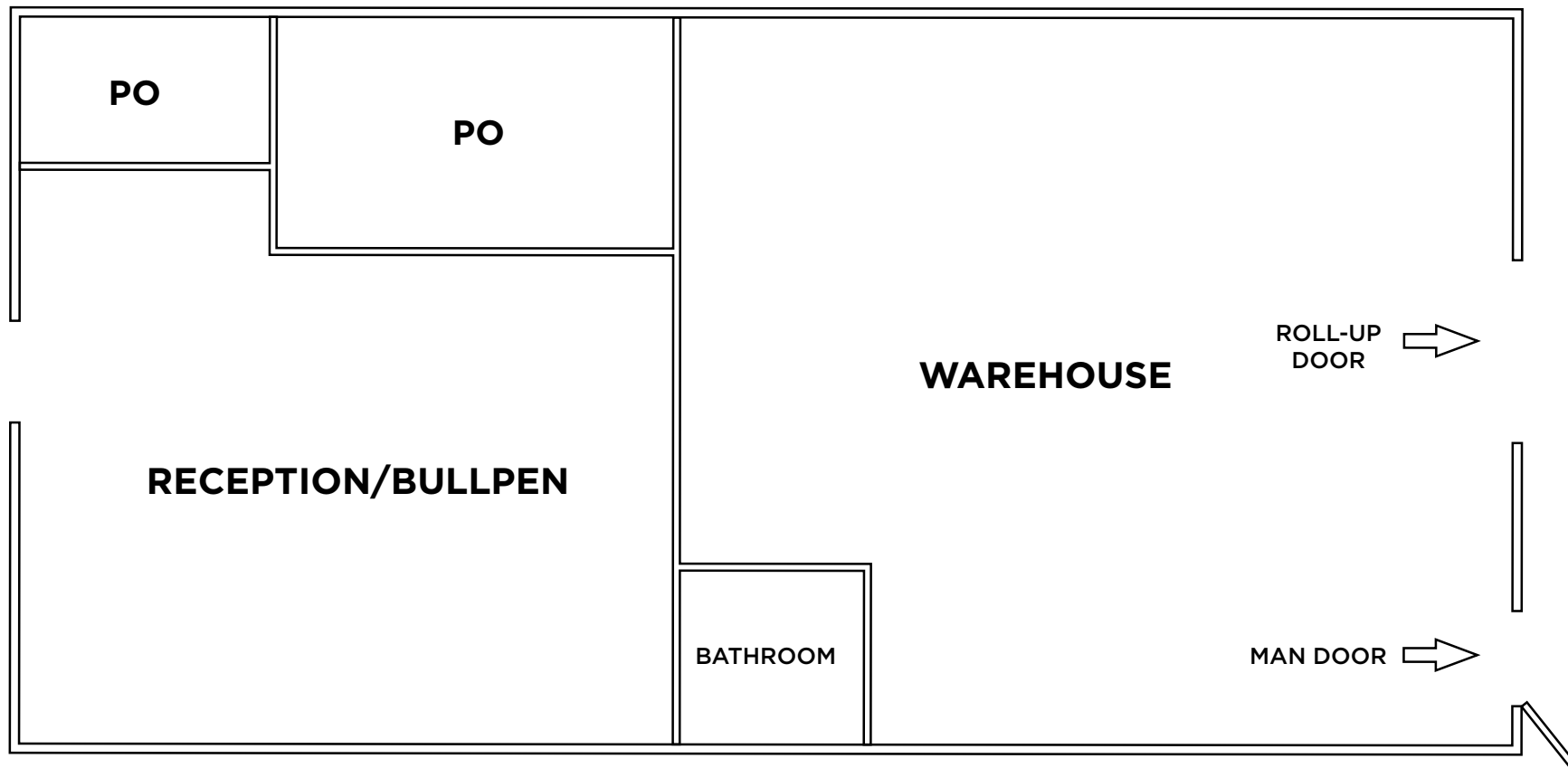
Power to be verified  
by tenant



Masonry  
Constuction



16' Warehouse  
Clearance



Josh Messing | 925 849 2702 | [josh.messing@cushwake.com](mailto:josh.messing@cushwake.com) | LIC. #02344579

1333 N California Blvd, Suite 500, Walnut Creek, CA 94596