

MANHASSET ROW

PROMINENT NEW RETAIL SPACE WITHIN THE HEART OF THE MIRACLE MILE



MANHASSET, NY

1575 - 1595 NORTHERN BLVD

AVAILABLE SIZE

2,249 SF + Basement

CO-TENANTS

Investor's Bank, Sweetgreen, Laser Away, Visual Comfort (Circa Lighting), T-Mobile

COMMENTS

- Former fitness space available
- Redevelopment of existing shopping center to create better parking and vehicular circulation - Expected completion Summer 2023
- Less than 1/2 mile from The Americana (Gucci, Tiffany, Louis Vuitton, Ralph Lauren, Apple, Crate & Barrel, etc.) in the heart of Long Island's most affluent trade area
- \$288,963 Average Household Income within a 1 mile radius
- Suitable for first class retail brands

CONTACT EXCLUSIVE AGENTS

BRIAN SCHUSTER

bschuster@ripcony.com

516.933.8880

JASON SOBEL

jsobel@ripcony.com

516.933.8880

JULIANA CHIARELLI

jchiarelli@ripcony.com

516.933.8880

RIPCO
REAL ESTATE

1000 Woodbury Road
Suite 100
Woodbury, NY 11797
516.933.8880

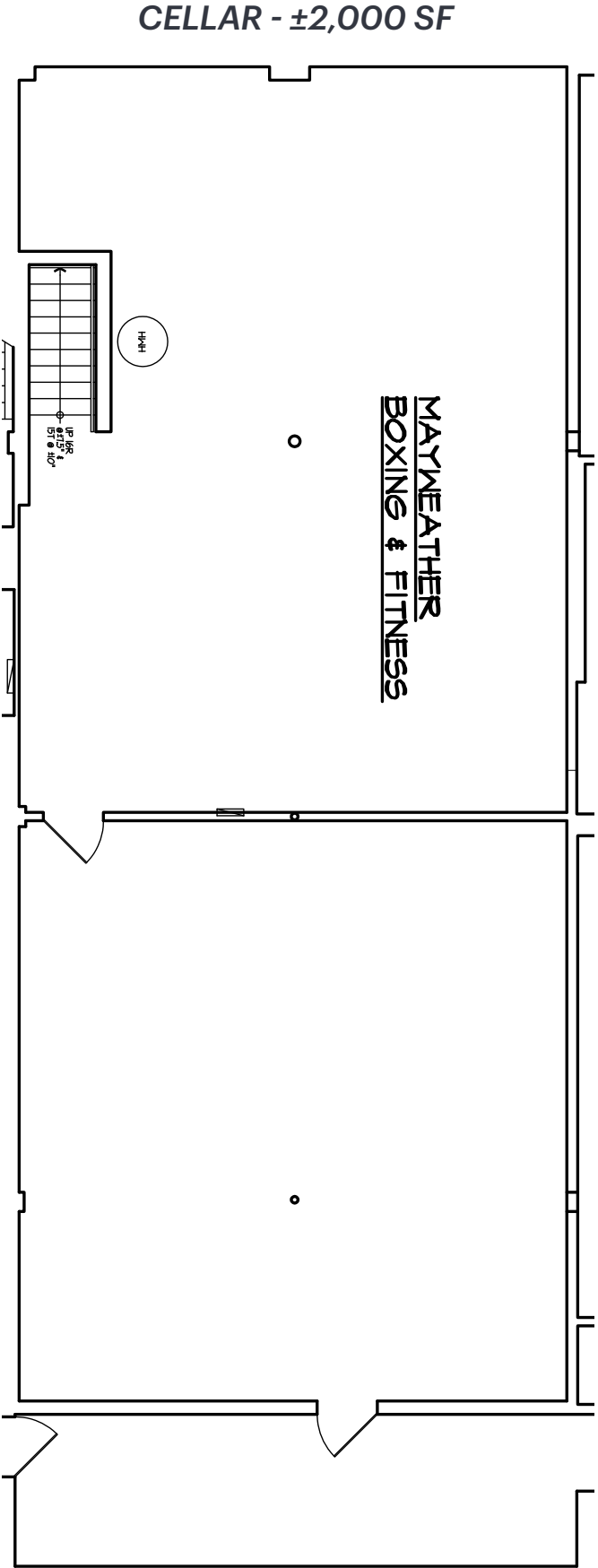
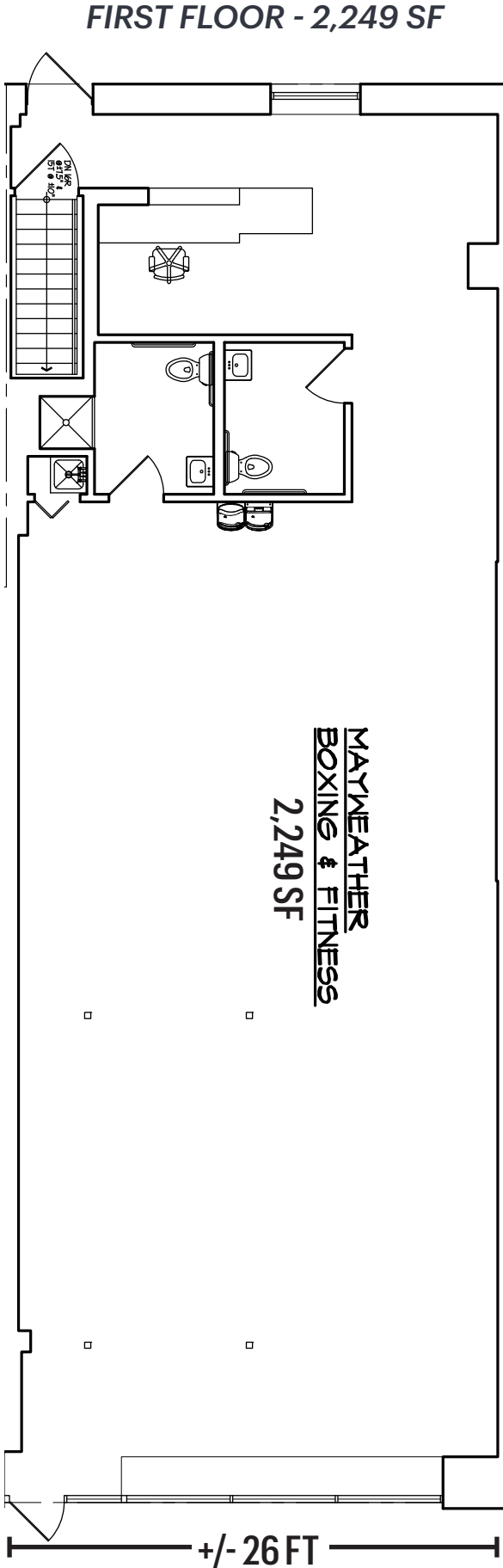
Please visit us at [ripcony.com](https://www.ripcony.com) for more information

This information has been secured from sources we believe to be reliable, but we make no representations as to the accuracy of the information. References to square footage are approximate. Buyer must verify the information and bears all risk for any inaccuracies.

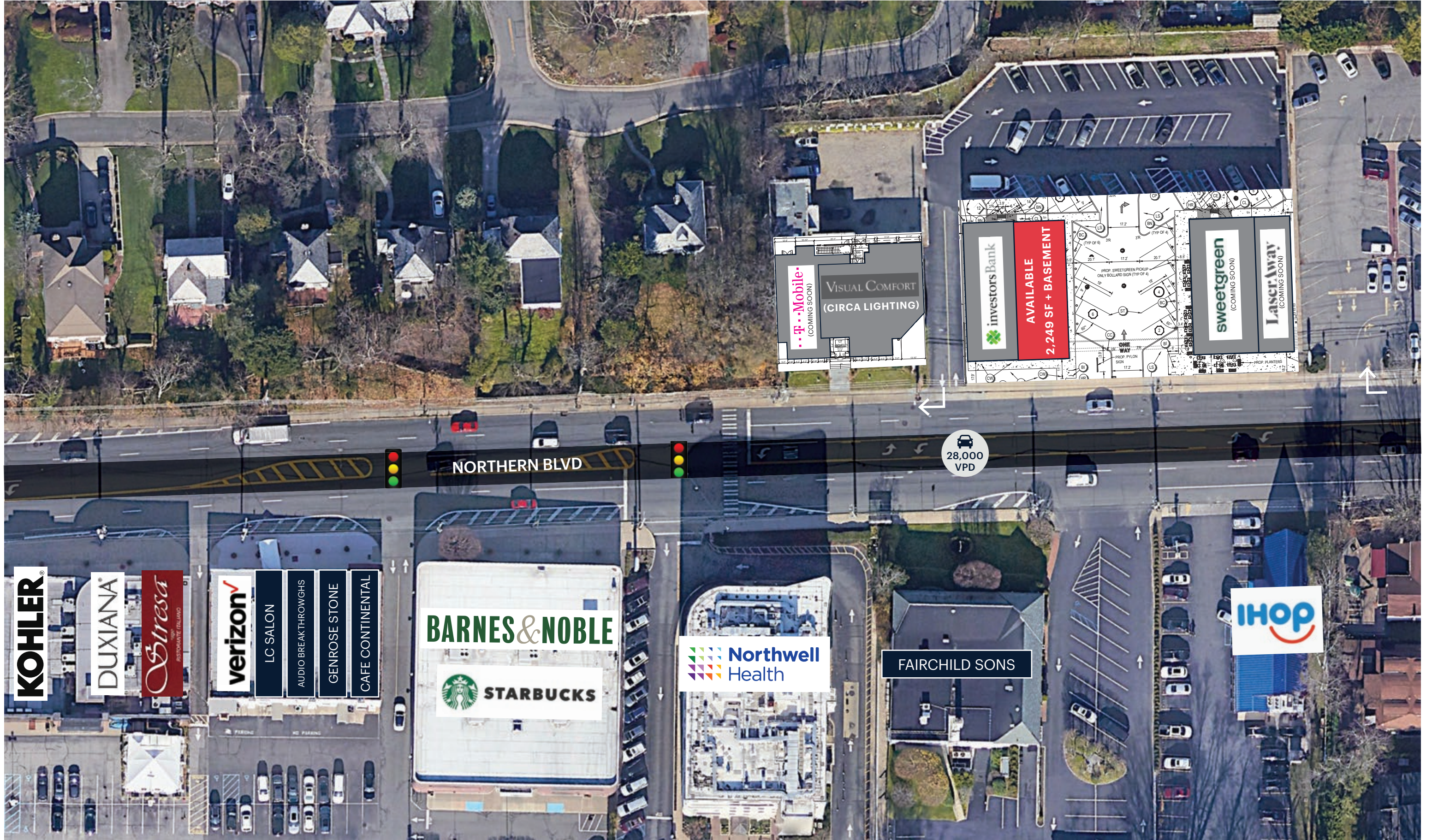
RENDERINGS



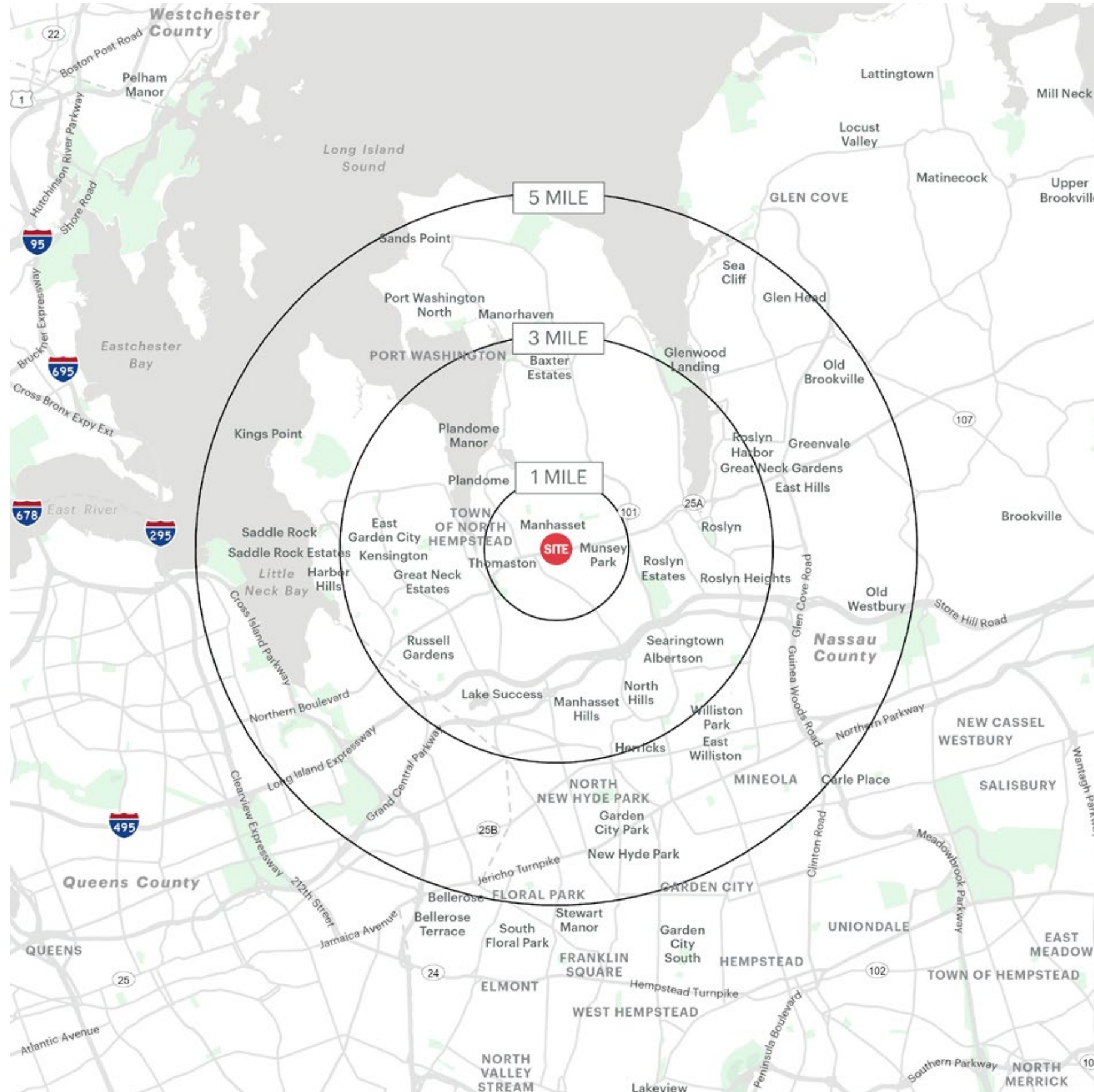
FLOOR PLAN



CLOSE UP AERIAL



AREA DEMOGRAPHICS



1575 - 1595 NORTHERN BOULEVARD MANHASSET, NEW YORK

1 MILE RADIUS

POPULATION

11,174

HOUSEHOLDS

3,714

AVERAGE HOUSEHOLD INCOME

\$289,851

MEDIAN HOUSEHOLD INCOME

\$200,001

COLLEGE GRADUATES (Bachelor's +)

5,837 - 77%

TOTAL BUSINESSES

756

TOTAL EMPLOYEES

7,726

DAYTIME POPULATION (w/ 16 yr +)

13,805

3 MILE RADIUS

POPULATION

108,996

HOUSEHOLDS

40,338

AVERAGE HOUSEHOLD INCOME

\$205,149

MEDIAN HOUSEHOLD INCOME

\$143,416

COLLEGE GRADUATES (Bachelor's +)

52,763 - 66%

TOTAL BUSINESSES

7,371

TOTAL EMPLOYEES

80,840

DAYTIME POPULATION (w/ 16 yr +)

138,887

5 MILE RADIUS

POPULATION

338,332

HOUSEHOLDS

123,028

AVERAGE HOUSEHOLD INCOME

\$168,125

MEDIAN HOUSEHOLD INCOME

\$118,242

COLLEGE GRADUATES (Bachelor's +)

141,342 - 57%

TOTAL BUSINESSES

16,580

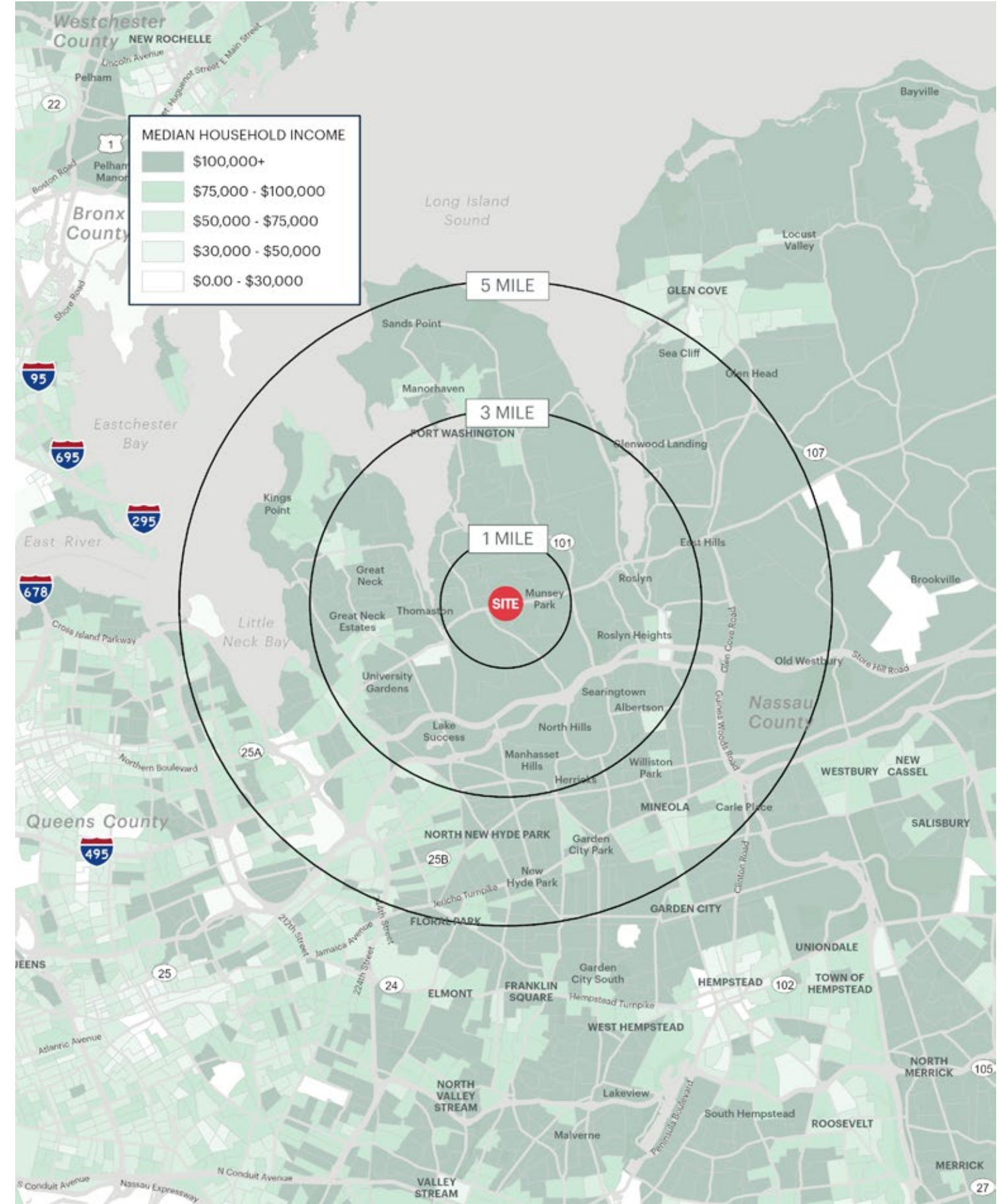
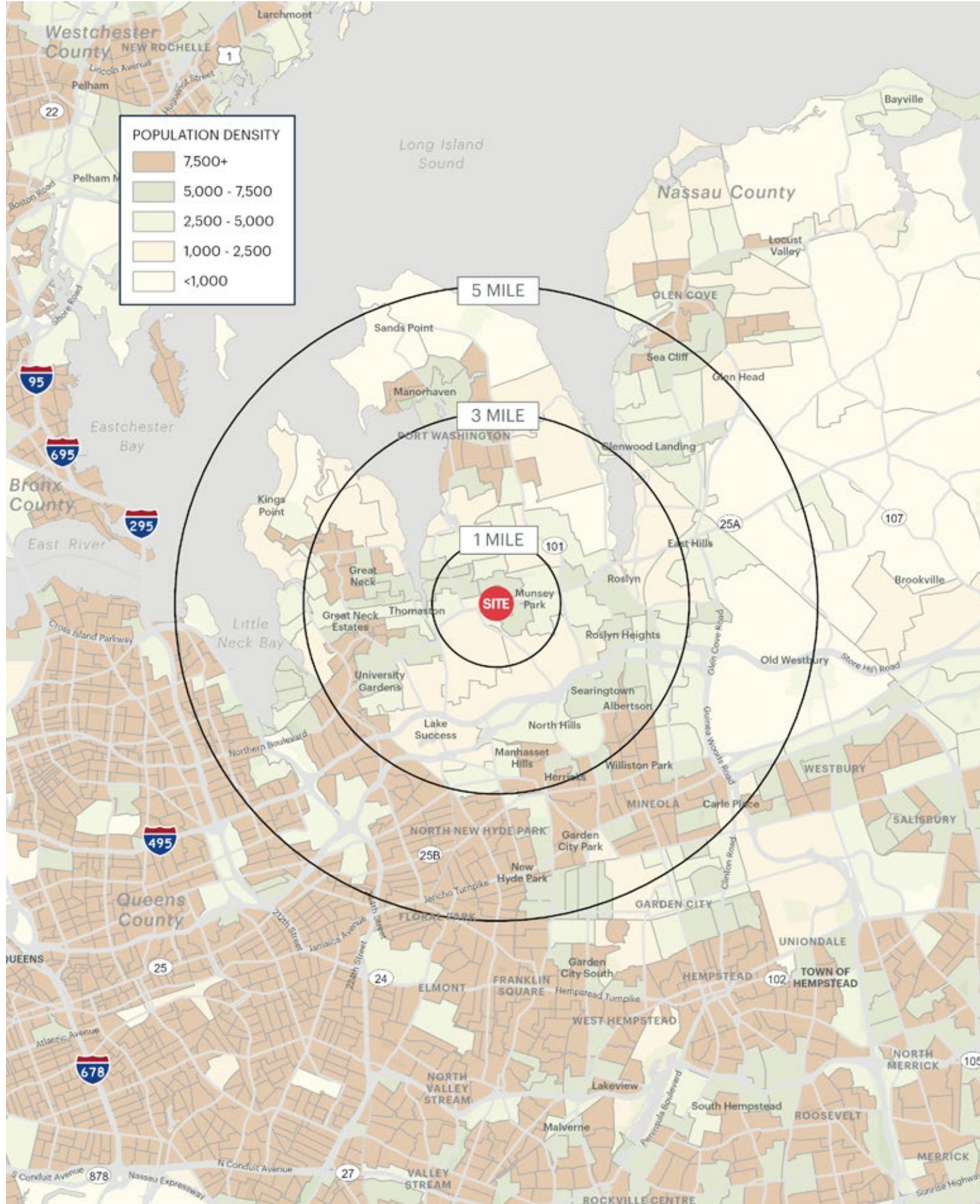
TOTAL EMPLOYEES

200,152

DAYTIME POPULATION (w/ 16 yr +)

377,480

AREA DEMOGRAPHICS



1575 - 1595 NORTHERN BOULEVARD MANHASSET, NEW YORK