



1,150 SF MEDICAL OFFICE SPACE FOR LEASE

1220 MEADOW NORTHBROOK, IL 60062



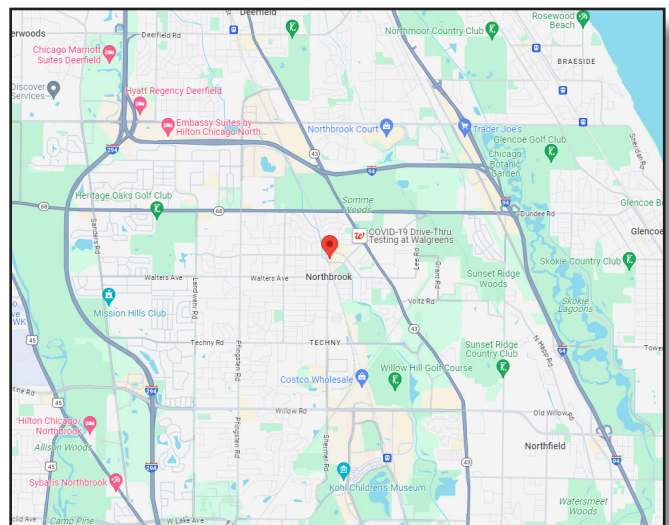
BUILDING FEATURES:

- 1,150 SF Move in Ready Medical Office Space
- 57 Surface Spaces are available: Ratio of 3.72/1,000 SF
- Walk to Northbrook Station Commuter Rail (Milwaukee District North Line)
- Distinctive lobby finished with brick, quarry tile and wood paneling.
- Downtown Conveniences , Shopping, Restaurants, Entertainment
- Janitorial Service 5 Days Per Week included!

- On Site Ownership
- HVAC Included in the Rent
- Corner space with plenty of windows
- Separately Metered Electric
- **Rental Rate Price Drop!: \$25.00 PSF Modified Gross**

AVAILABLE SPACE:

SUITE	SIZE (SF)	Description
210	1,150 SF	4 exam rooms(2 with sinks) Private office, reception area, nurse station, storage & more ! Corner Space!!!



FOR MORE INFORMATION:

RANDY OLCZYK
Direct: 847.246.9611
randy@chicagolandcommercial.com

TOM CALLAHAN
Direct: 847.246.9636
Tom@chicagolandcommercial.com

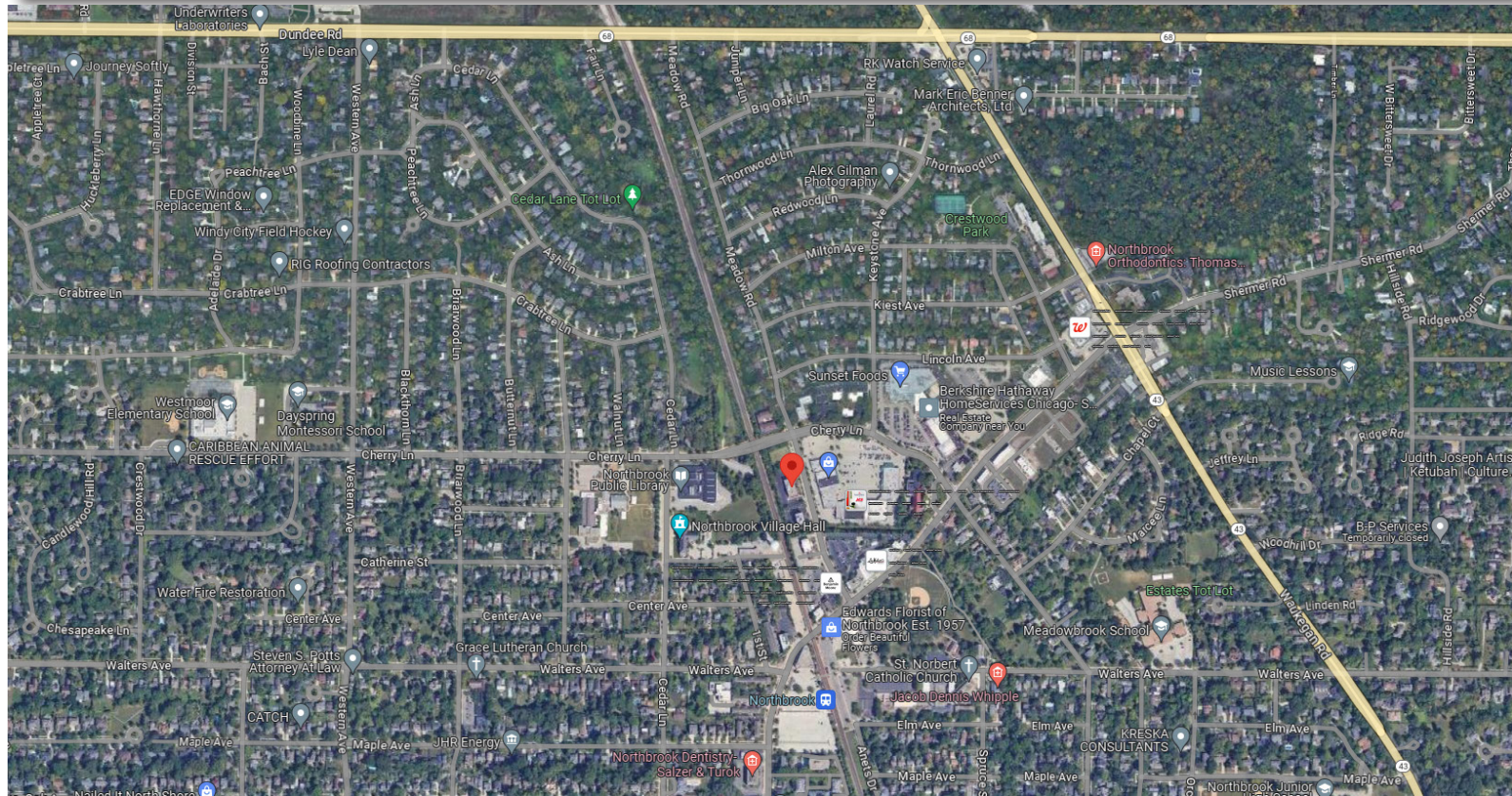
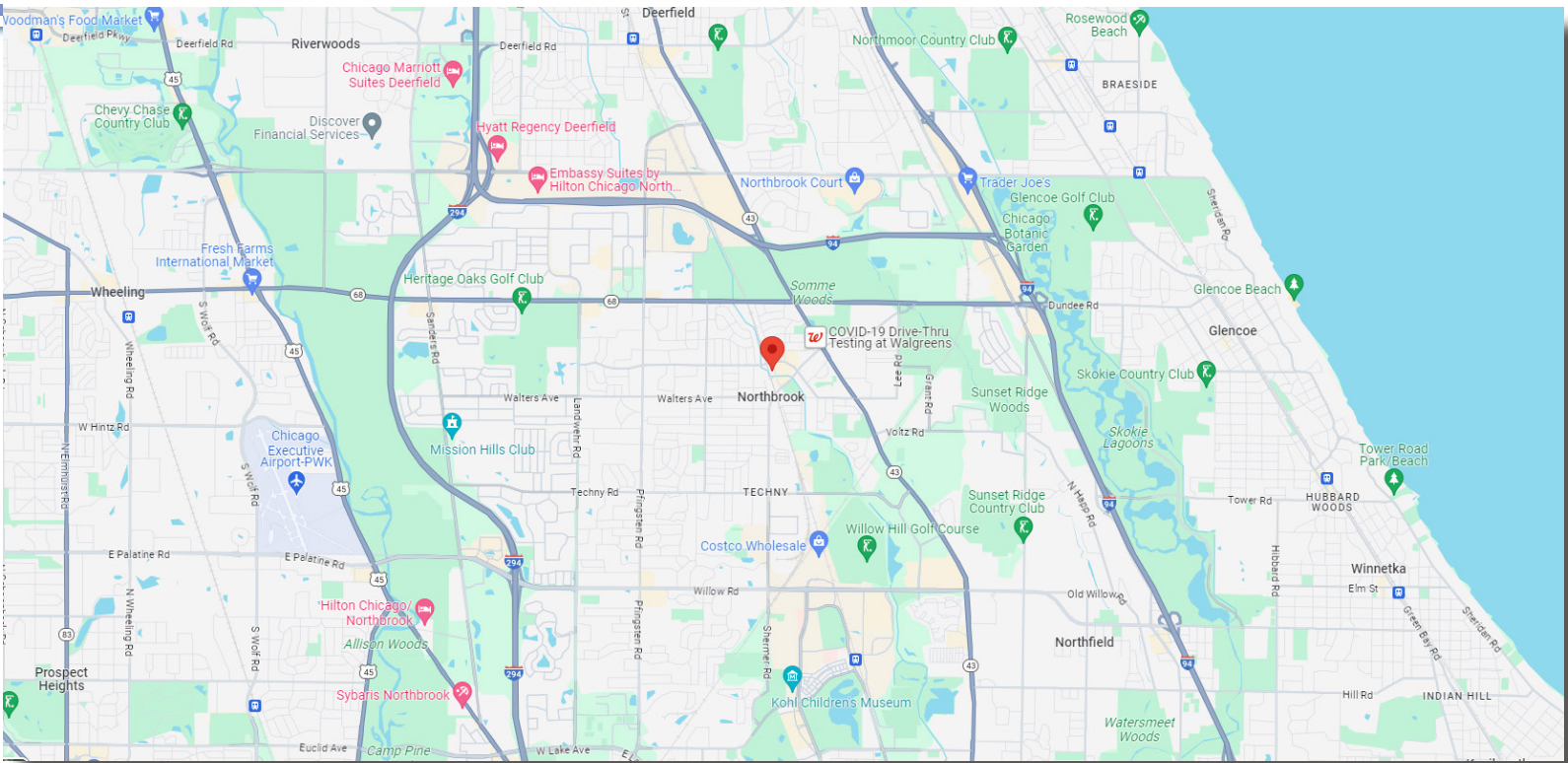


4811 Emerson Ave Suite 112 Palatine, IL



I, 150 SF MEDICAL OFFICE SPACE FOR LEASE

1220 MEADOW NORTHBROOK, IL 60062



FOR MORE INFORMATION:

RANDY OLCZYK
Direct: 847.246.9611
randy@chicagolandcommercial.com

TOM CALLAHAN
Direct: 847.246.9636
Tom@chicagolandcommercial.com



**Chicagoland
Commercial
REAL ESTATE**

4811 Emerson Ave #112 Palatine, IL 60067

LEASING | SALES | TENANT ADVISORY | MANAGEMENT

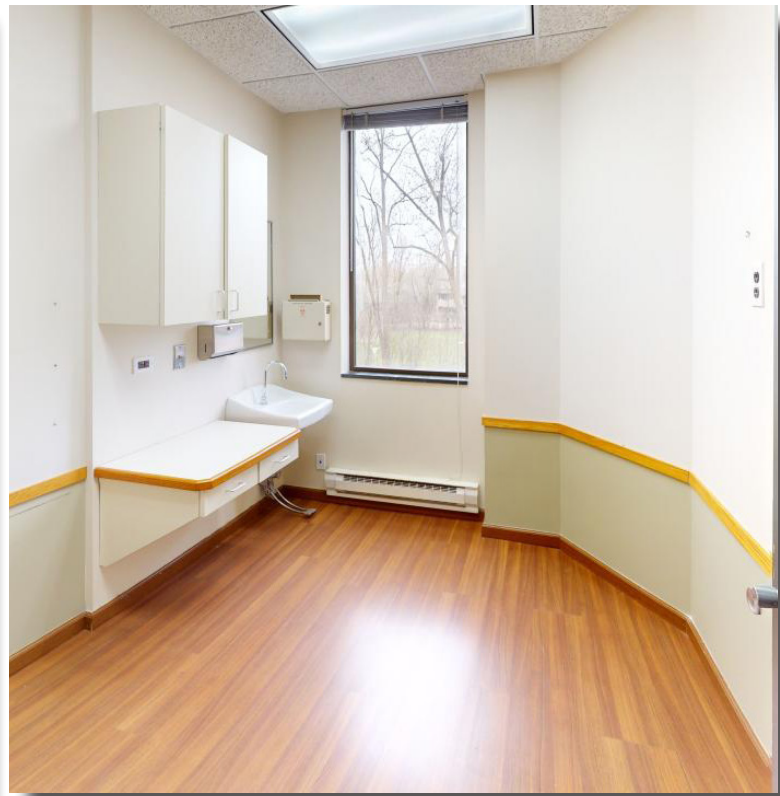
www.chicagolandcommercial.com



1,150 SF MEDICAL OFFICE SPACE FOR LEASE

1220 MEADOW NORTHBROOK, IL 60062

PHOTOS:



FOR MORE INFORMATION:

RANDY OLCZYK
Direct: 847.246.9611
randy@chicagolandcommercial.com

TOM CALLAHAN
Direct: 847.246.9636
Tom@chicagolandcommercial.com



4811 Emerson Ave #112 Palatine, IL 60067



1,150 SF MEDICAL OFFICE SPACE FOR LEASE

1220 MEADOW NORTHBROOK, IL 60062

PHOTOS:



FOR MORE INFORMATION:

RANDY OLCZYK
Direct: 847.246.9611
randy@chicagolandcommercial.com

TOM CALLAHAN
Direct: 847.246.9636
Tom@chicagolandcommercial.com



4811 Emerson Ave #112 Palatine, IL 60067

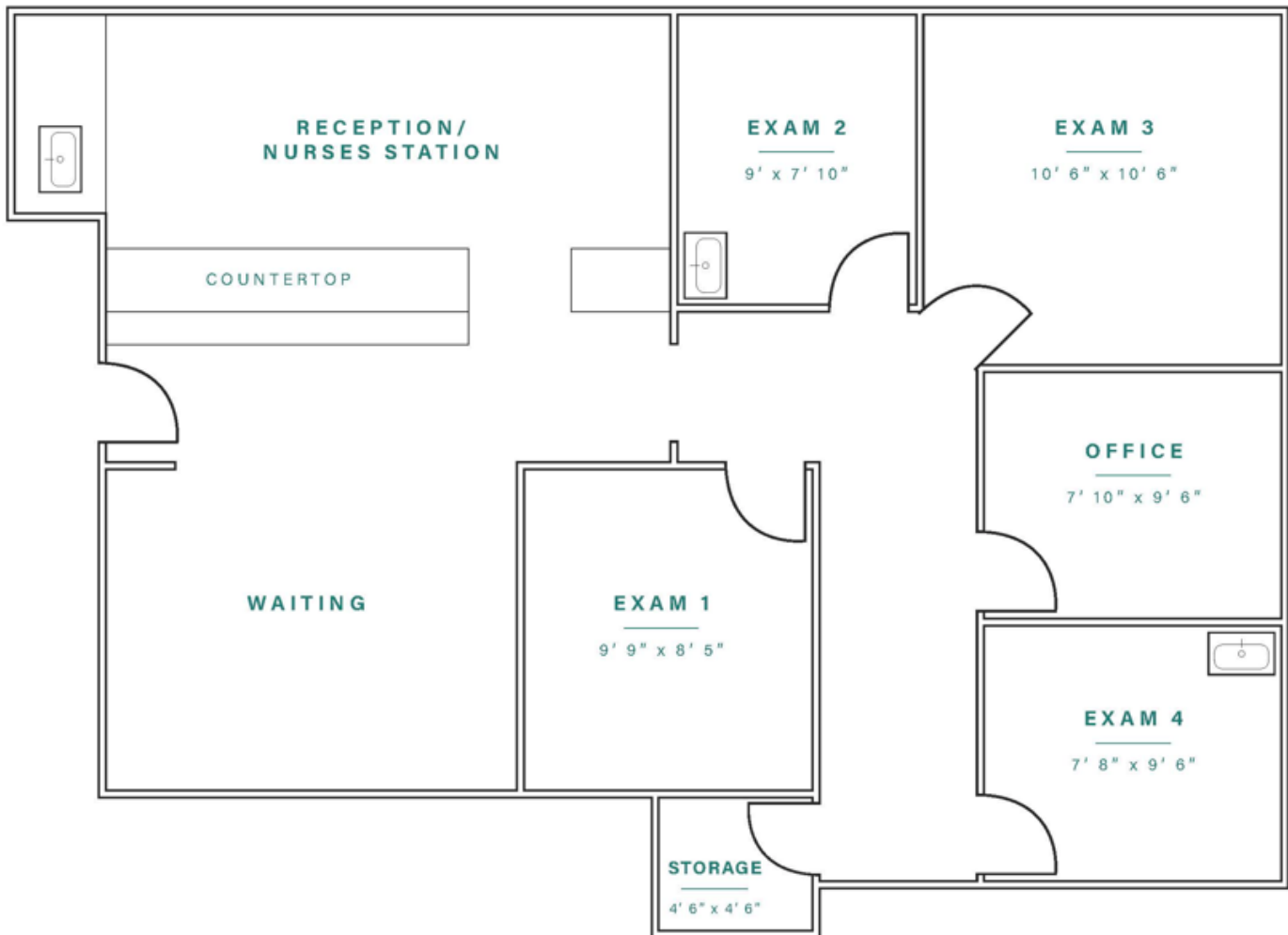
LEASING | SALES | TENANT ADVISORY | MANAGEMENT

www.chicagolandcommercial.com



SUITE 210:

Suite 210 1,150 SF Medical Space



FOR MORE INFORMATION:

RANDY OLCZYK
Direct: 847.246.9611
randy@chicagolandcommercial.com

TOM CALLAHAN
Direct: 847.246.9636
Tom@chicagolandcommercial.com



4811 Emerson Ave #112 Palatine, IL 60067