

FOR LEASE/SALE Industrial/Flex Bay

Roberto Magno

Founder - Principal
617.823.5303
roberto@castlearchpa.com

Sergio Magno

Managing Director
978.835.1915
sergio@castlearchpa.com

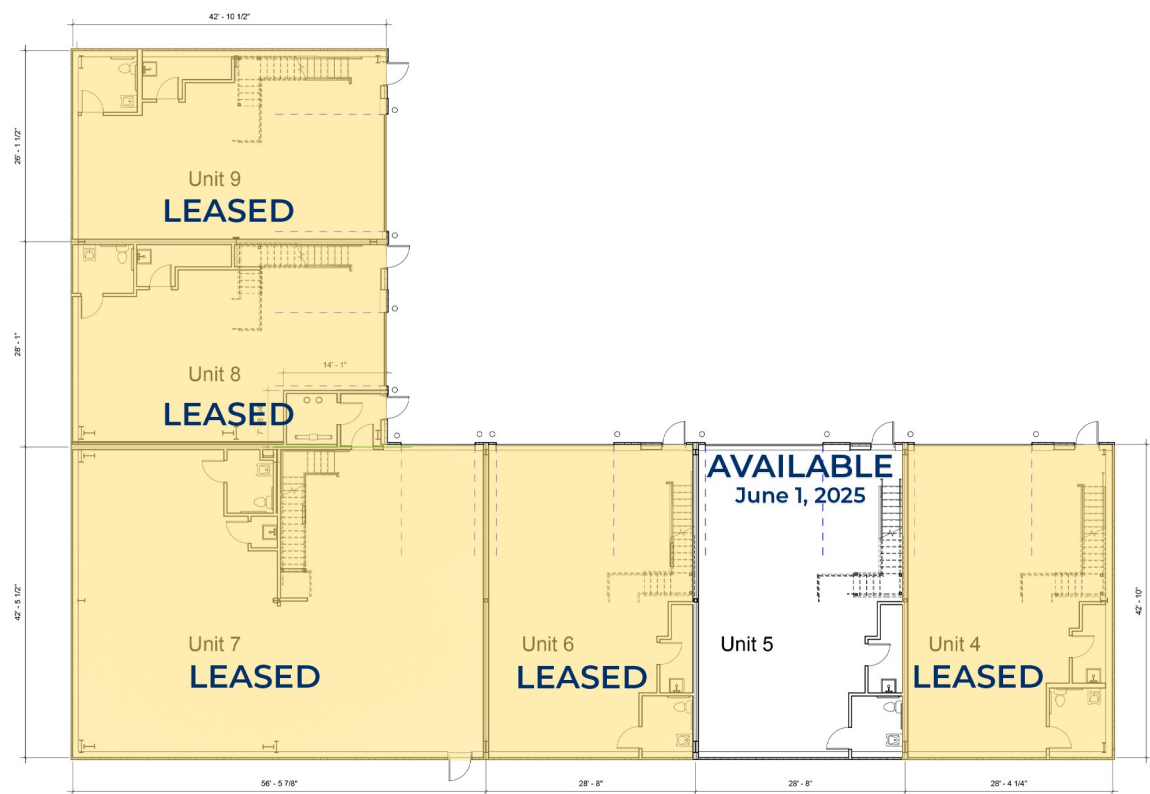
68 Leonard St, Suite 207
Belmont, MA 02478
castlearchpa.com

30 Riverdale Ave, #5, Newton, MA

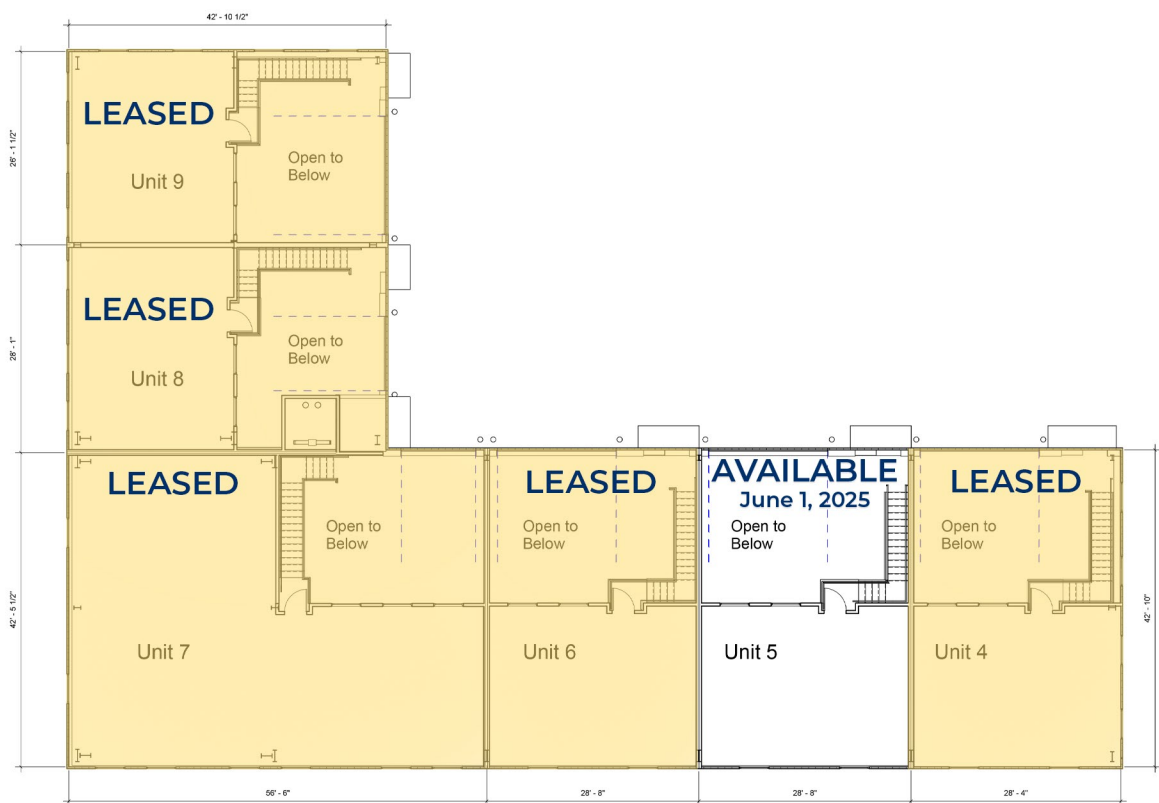
Highlights:

- Asking \$28.00 per RSF NNN, or \$1,195,000
- New Construction (2023)
- 1,820 RSF Bay Available June 1, 2025
- 14' Overhead Drive-in Doors
- Warehouse Clear Heights Ranging from 9'-24'
- Zone M (Manufacturing)
- Fully Sprinklered and HVAC Throughout
- Immediate Access to Mass Pike, Storrow Drive & Routes 16 & 20

Warehouse



Mezzanine Office



Location/Amenities

