

FOR SALE

141 CASSIA WAY, UNIT A
HENDERSON, NV 89014



CLICK HERE FOR
VIRTUAL TOUR

**\$250
/PSF**

±11,496 SF OFFICE/WAREHOUSE CONDO

DANNY LEANOS

Senior Associate
+1 702 522 5008
danny.leanos@jll.com
NV Lic. #S.0191773

BRAYDEN STOCKBAUER

Associate
+1 702 522 5114
brayden.stockbauer@jll.com
NV Lic. #S.0203930

ROB LUJAN, SIOR, CCIM

Executive Managing Director
+1 702 522 5002
rob.lujan@jll.com
NV Lic. #S.0051018

JASON SIMON, SIOR

Executive Managing Director
+1 702 522 5001
jason.simon@jll.com
NV Lic. #S.0045593



FLOOR PLAN

For Illustrative Purposes Only. Sizes are approximate. Buyer to verify all info.



UNIT FEATURES

AVAILABLE CONDO SIZE
±11,496 SF

OFFICE
±4,598 sf

MEZZANINE STORAGE SPACE
(not included in SF)
±1,400 sf

CLEAR HEIGHT
±24'

GRADE
One (12' x 14')

POWER
200 amps, 3-phase

COOLING
Evaporative coolers

EST. LOT SIZE
±0.26 acres

FIRE SPRINKLERS
Yes

YEAR BUILT
1998

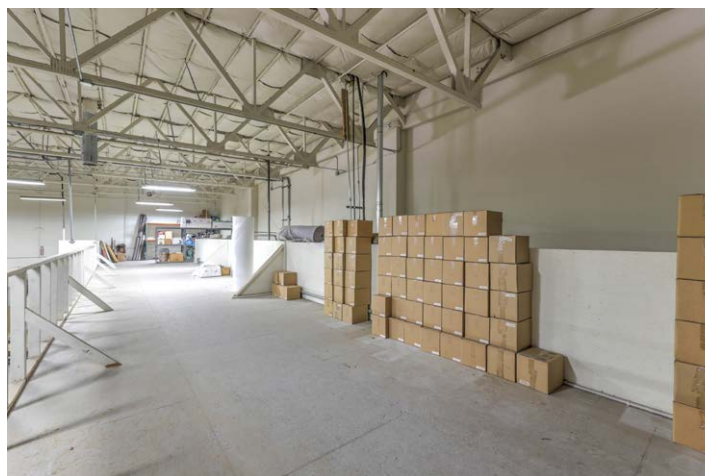
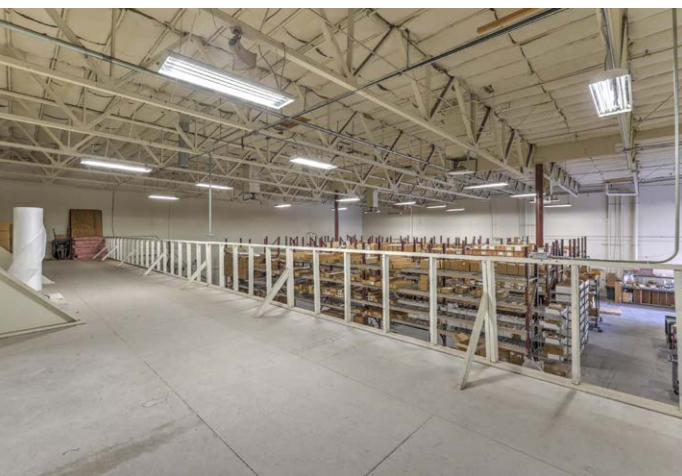
CONSTRUCTION
Reinforced Concrete

APN
178-142-10-005

HOA DUES
\$734.85/mo

PRICE
\$2,874,000 (\$250/PSF)

PROPERTY PHOTOS



LOCATOR MAP



BEST BUY
COSTCO WHOLESALE

HENDERSON HOSPITAL
STARBUCKS
DAVE & BUSTERS

Whitney Ranch Shopping Center
HOBBY LOBBY
PIZZA HUT
McDonald's
SUBWAY
Applebees

GALLERIA AT SUNSET

Stephanie Street Shopping Center
BARNES & NOBLE
SPROUTS FARMERS MARKET
HomeGoods
rack
PETSMART
FedEx
ULTA
Michael's
carter's
GOLF GALAXY
Total Wine & More
OUTBACK
OLD NAVY

SUNSET STATION

ACE
OnTrac

FERGUSON

Google

Global Nutrition Group Inc.

Comfort
LOWE'S
Walmart

Levi's

BW | Best Western
Hotels & Resorts

CADENCE

OKER WILD CASINO

VALLEY AUTOMALL

TOURO UNIVERSITY

Walmart
Pollo Loco
SUBWAY

Carl's Jr.
Cane's

SITE

LITHION

Sofitel

Graham Packaging

Lake Mead Crossing
Target
Starbucks
CVS pharmacy
ROSS DRESS FOR LESS
ULTA
Pollo Loco
Marshall's
FITNESS

Albertsons
DEL TACO

Walmart

INTERSTATE 215

INTERSTATE 11

HENDERSON

W Horizon Ridge Pkwy

W Pacific Ave

W Van Wagenen St

S Water St

E Burkholder Blvd

Boulder Hwy

W Warm Springs Rd

Pabco Rd

E State Rd

N Stephanie St

N Gibson Rd

American Pacific Dr

W Galleria Dr

E Sunset Rd



INTERESTED IN MORE INFORMATION?

DANNY LEANOS

Senior Associate
+1 702 522 5008
danny.leanos@jll.com
NV Lic. #S.0191773

BRAYDEN STOCKBAUER

Associate
+1 702 522 5114
brayden.stockbauer@jll.com
NV Lic. #S.0203930

ROB LUJAN, SIOR, CCIM

Executive Managing Director
+1 702 522 5002
rob.lujan@jll.com
NV Lic. #S.0051018

JASON SIMON, SIOR

Executive Managing Director
+1 702 522 5001
jason.simon@jll.com
NV Lic. #S.0045593

Although information has been obtained from sources deemed reliable, JLL does not make any guarantees, warranties or representations, express or implied, as to the completeness or accuracy as to the information contained herein. Any projections, opinions, assumptions or estimates used are for example only. There may be differences between projected and actual results, and those differences may be material. JLL does not accept any liability for any loss or damage suffered by any party resulting from reliance on this information. If the recipient of this information has signed a confidentiality agreement with JLL regarding this matter, this information is subject to the terms of that agreement. ©2025 Jones Lang LaSalle Brokerage, Inc. All rights reserved.

