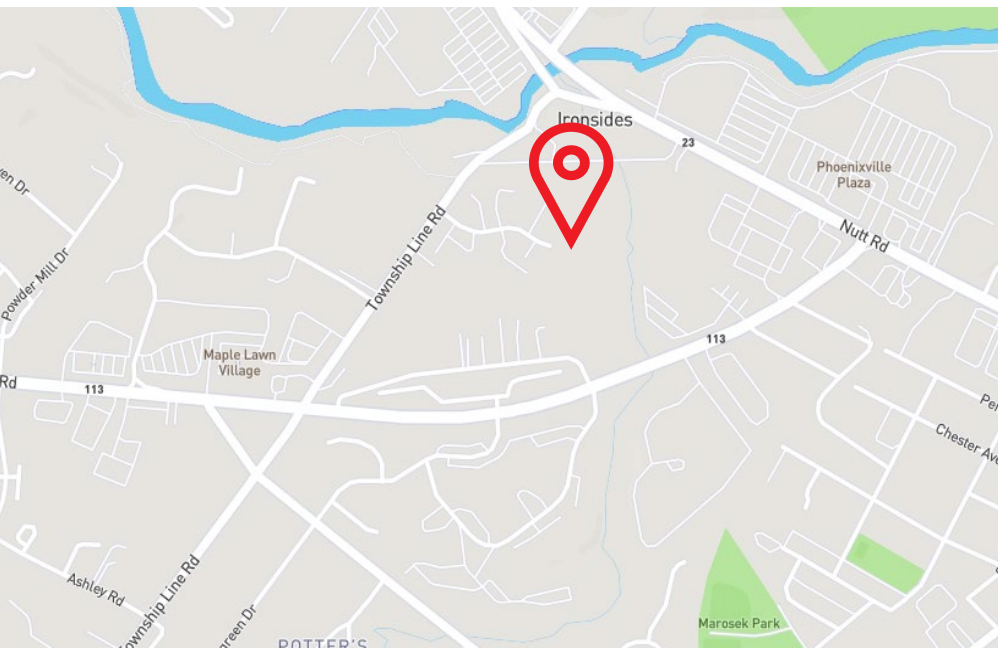


For Sale | Lease

1050 Township Line Road
Phoenixville, PA 19460



3.9 Acres – Fully Approved Build-To-Suit Land

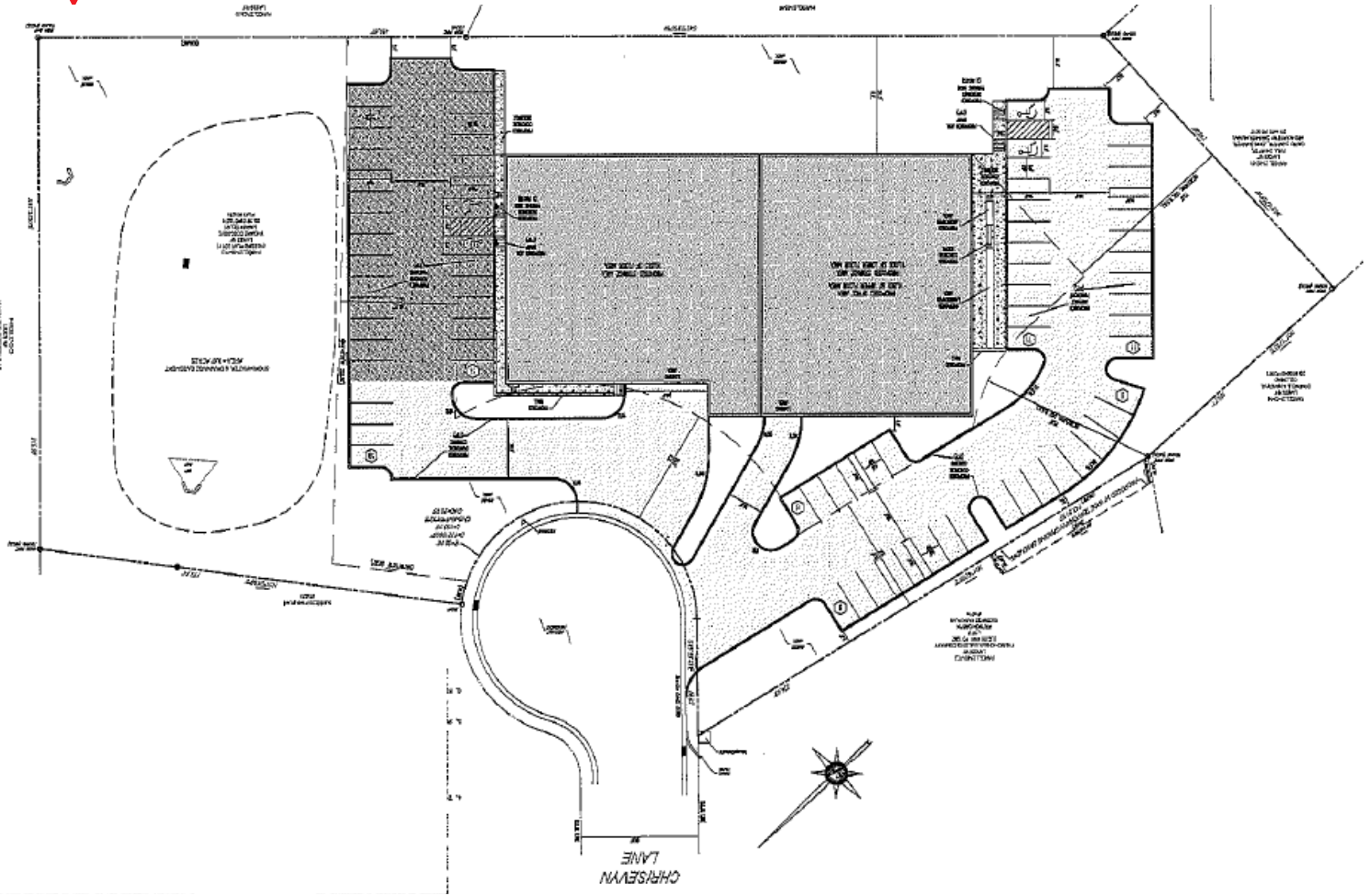
Property Highlights

- Fully approved 30,000 SF flex/industrial building
- Located less than 15 minutes to:
 - Route 29
 - PA Turnpike (I-276) Route 100
 - Route 422
- 28' clear height
- Industrial Zoning



Site Plan

1050 Township Line Road
Phoenixville, PA 19460



Demographics	2-mile	5-mile	10-mile
2021 Population	28,394	80,840	389,519
Average HHI	\$105,209	\$128,546	\$104,129
Median Age	39.8	40.5	41

Source: CoStar

For more information contact

Scott Williams
+1 610 249 2259
scotta.williams@am.jll.com

Jones Lang LaSalle Brokerage, Inc.
1235 Westlakes Drive, Suite 210
Berwyn, PA 19312
+1 610 249 2255



Although information has been obtained from sources deemed reliable, JLL does not make any guarantees, warranties or representations, express or implied, as to the completeness or accuracy as to the information contained herein. Any projections, opinions, assumptions or estimates used are for example only. There may be differences between projected and actual results, and those differences may be material. JLL does not accept any liability for any loss or damage suffered by any party resulting from reliance on this information. If the recipient of this information has signed a confidentiality agreement with JLL regarding this matter, this information is subject to the terms of that agreement. ©2022. Jones Lang LaSalle IP, Inc. All rights reserved.