

# 6380

WILSHIRE BLVD  
LOS ANGELES, CA

MOVE-IN  
READY  
SPEC  
SUITES

CBRE





6380

WILSHIRE BLVD  
LOS ANGELES, CA

CENTURY CITY

BEVERLY HILLS

6399

AC



HOLLYWOOD

6380

WILSHIRE BLVD  
LOS ANGELES, CA












# PROPERTY OVERVIEW



NEW SPEC SUITES



OUTDOOR SPACE

-  150,237 SF Building
-  Class A 17 Story High Rise Building
-  New Creative Spec Suites
-  Renovated Building Lobby
-  Updated Hallway Corridors
-  Three Elevator Cabs
-  Building Management
-  24 Hour Security
-  On-Site Engineer
-  Café
-  Parking 2/1,000 SF  
Unreserved: \$175  
Reserved: \$255

# AVAILABILITY

Contig. to  
6,591 SF

SPEC

Contig. to  
5,742 SF

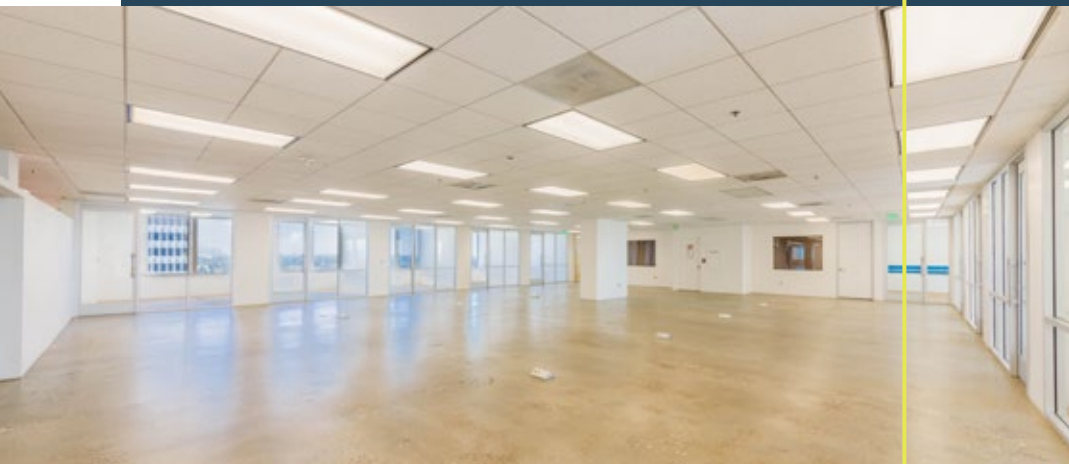
SPEC

SPEC

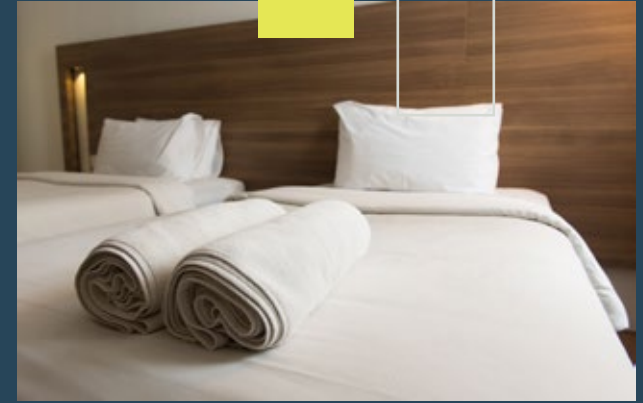
SUITE	SF	RENTAL RATE (FSG)	LAYOUT
200	2,613	\$2.90-3.10/SF	Open suite with kitchenette and restroom. Private floor with elevator ID.
810	4,715	\$3.10-3.20/SF	7 offices, kitchen, open space and storage room.
820	1,876	\$3.10-3.20/SF	4 offices and open workspace.
825	736	\$3.10-3.20/SF	2 offices and open area.
850	3,425	\$3.20-3.30/SF	6 offices, conference room, kitchen, with private outdoor patio.
909	3,019	\$3.10-3.20/SF	5 offices, conference room, kitchen.
908	1,428	\$3.10-3.20/SF	Shell space.
910	4,314	\$3.10-3.20/SF	11 offices, conference room, kitchen, reception.
1000	2,896	\$3.10-3.20/SF	Double door ID, reception, kitchen, 4 offices, conference room
1005	1,576	\$3.10-3.20/SF	1 office and open space.
1015	2,291	\$3.10-3.20/SF	5 offices and storage.
1018	1,853	\$3.10-3.20/SF	3 offices, kitchen, reception, open workspace.
1020	1,650	\$3.10-3.20/SF	3 offices, conference room, storage and closed reception area.
1100	1,700	\$3.10-3.20/SF	2 offices and open bullpen area.
1110	3,065	\$3.10-3.20/SF	4 offices, conference room, kitchen and bullpen area.
1111	2,398	\$3.10-3.20/SF	Double door entry with 2 offices, conference room, kitchen and open bullpen.
1115	1,553	\$3.10-3.20/SF	2 offices, conference room, bullpen area.
1200	1,082	\$3.10-3.20/SF	Open space.
1204	2,961	\$3.10-3.20/SF	5 offices, conference room, kitchen, reception, bullpen area.
1206	1,462	\$3.10-3.20/SF	Shell space.
1208	807	\$3.10-3.20/SF	Shell space.
1225	2,230	\$3.10-3.20/SF	6 offices, kitchen, storage.
1409	3,188	\$3.10-3.20/SF	3 offices, conference room, kitchen and bullpen area.
1500	15,008	\$3.10-3.20/SF	Full floor with combination of offices and open space.
1602	1,047	\$3.10-3.20/SF	1 office, open area.
1612	1,023	\$3.10-3.20/SF	1 office, conference room, storage.
1701	1,547	\$3.20-3.30/SF	3 offices, conference room, kitchen, bullpen area.
1709	1,894	\$3.10-3.20/SF	3 offices, bullpen area and restroom.







# AREA AMENITIES



## Entertainment

Petersen Automobile Museum, LACMA, La Brea Tar Pits & Museum, The Grove, Saban Theatre, Academy Museum of Motion Pictures



## Food & Beverage

Uovo, HiHo Cheeseburger, Kazunori, Coral Fish, Demitasse, Molly Malone's Pub, Rocco's, Café Latte,

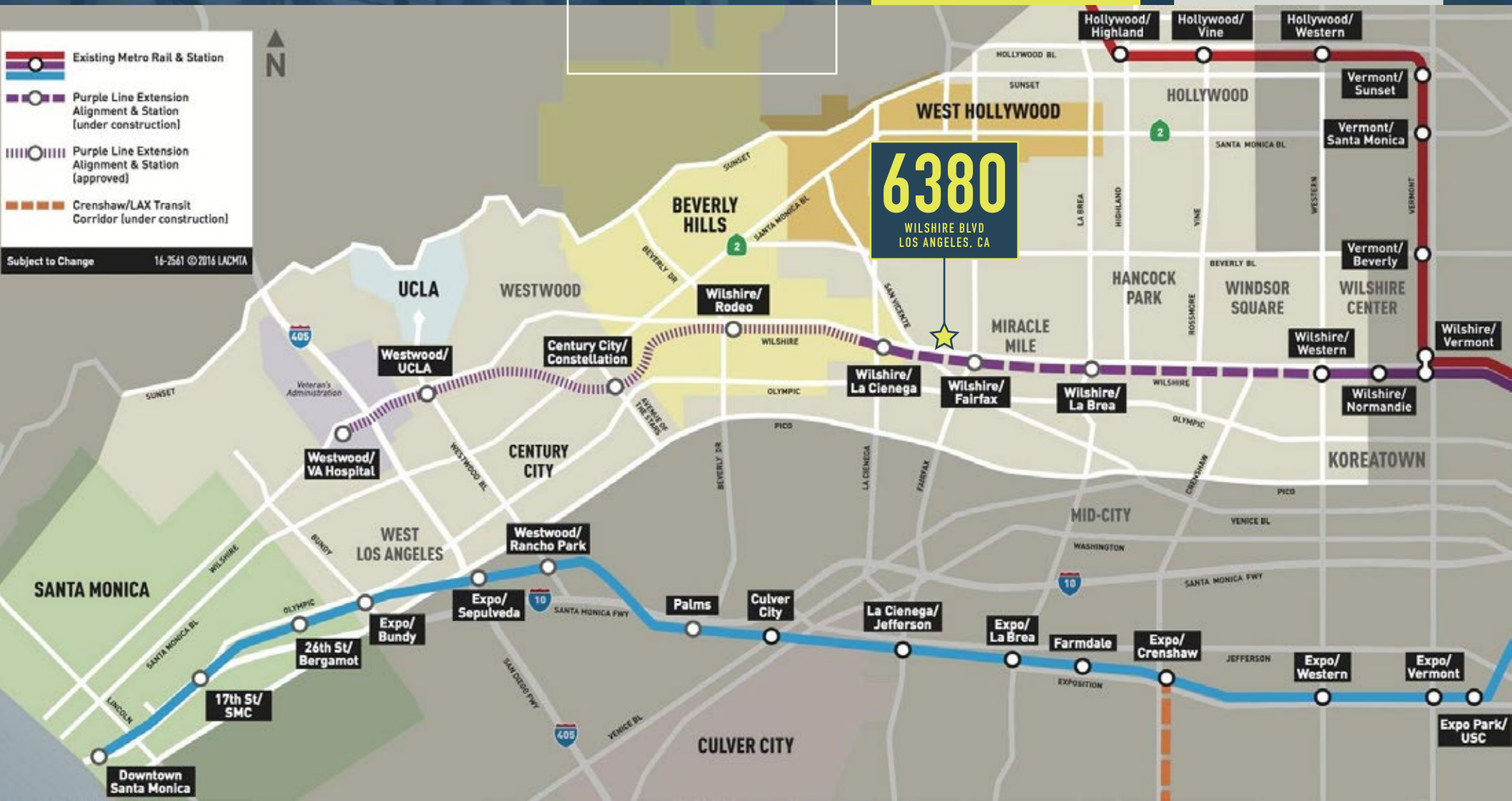


## Hospitality

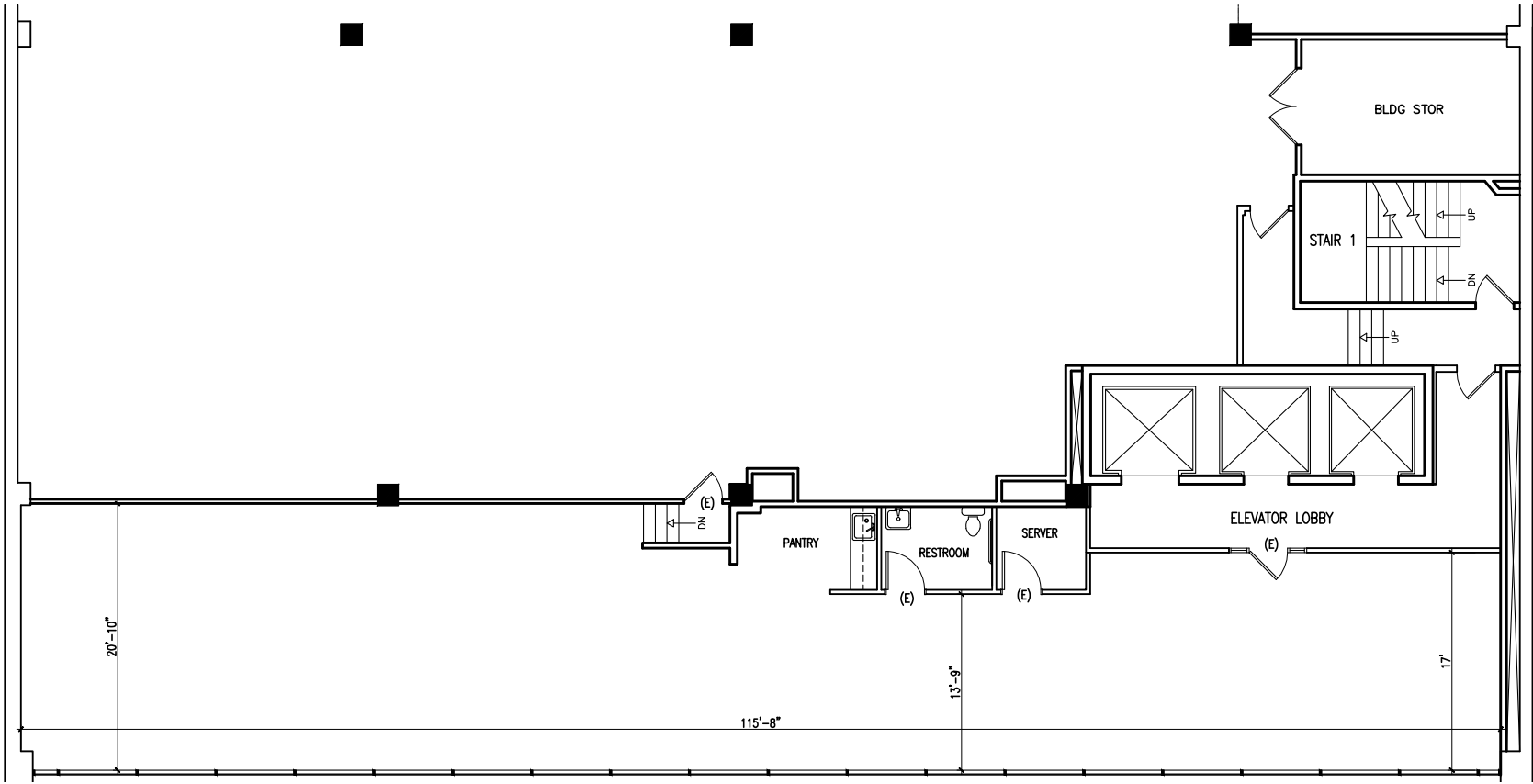
AC Marriot Hotel, Vision on Wilshire, Wilshire Skyline, The Hotel Wilshire

# METRO MAP

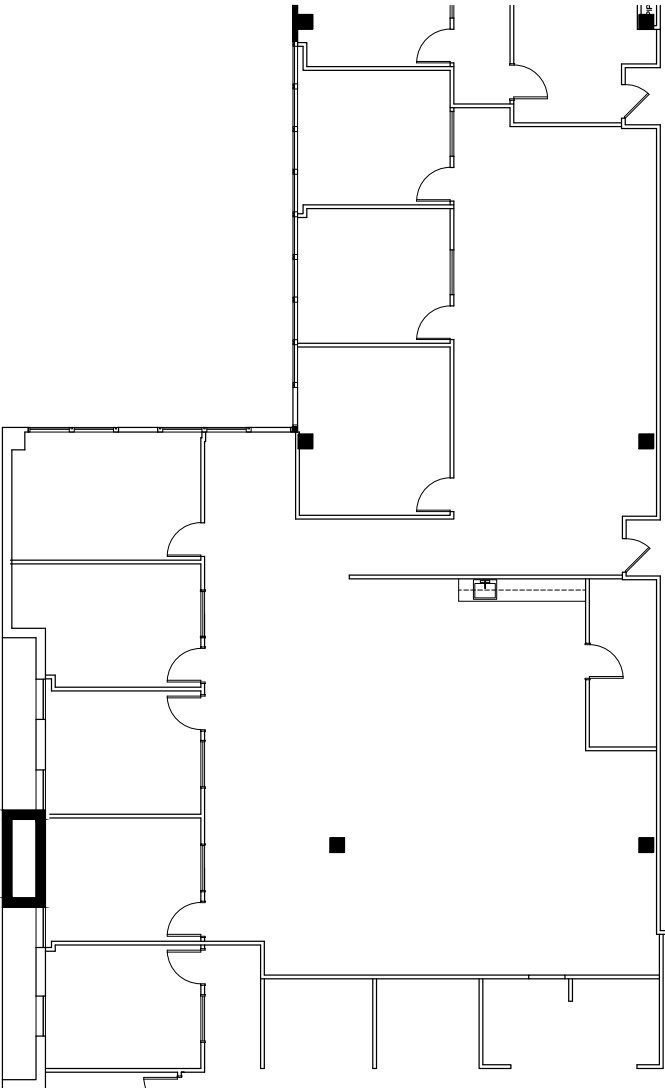
PURPLE LINE EXTENSION WITH MULTIPLE STATIONS BEING ADDED NEAR 6380 WILSHIRE



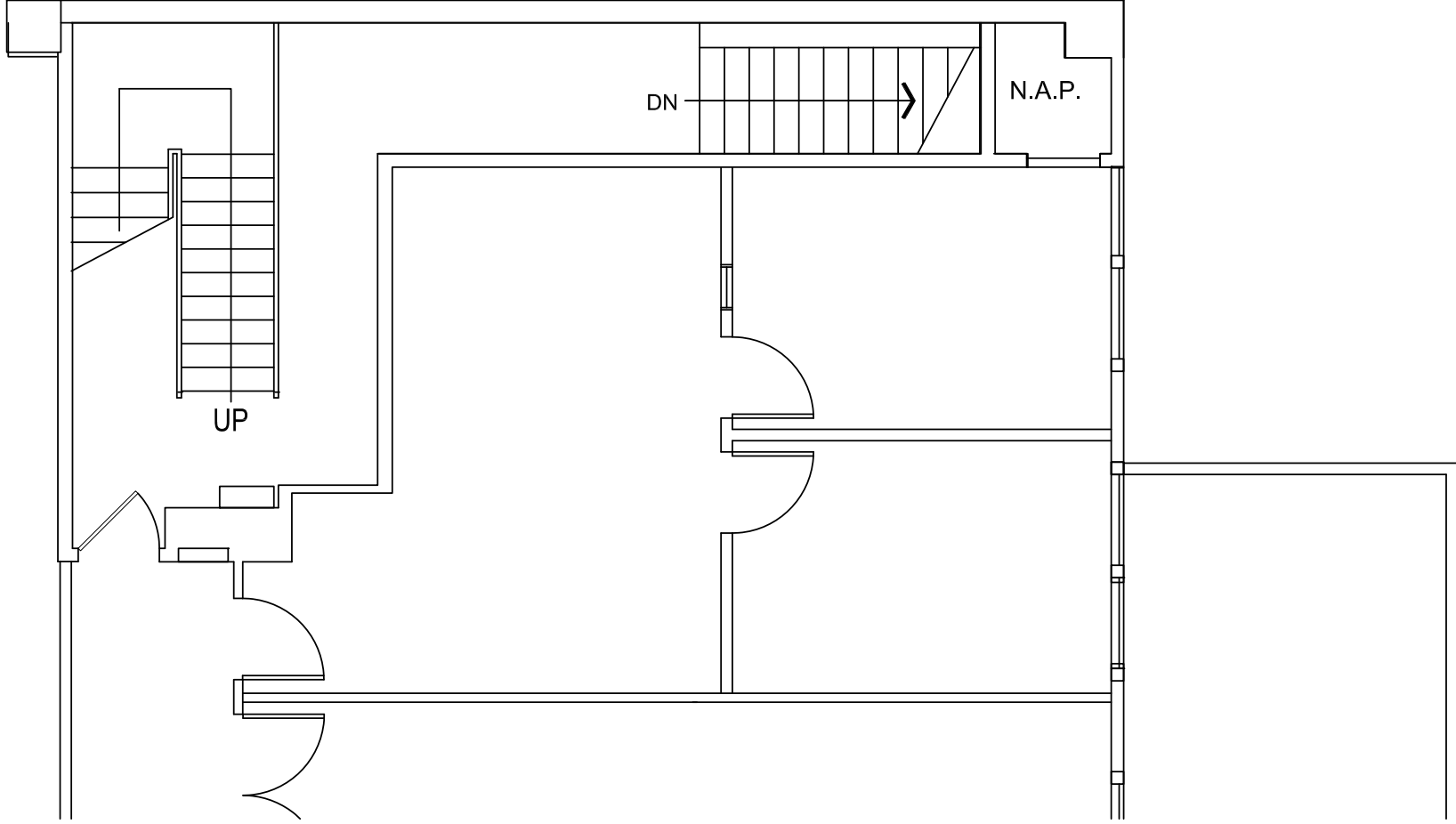
# FLOOR PLAN | Suite 200: 2,613 RSF



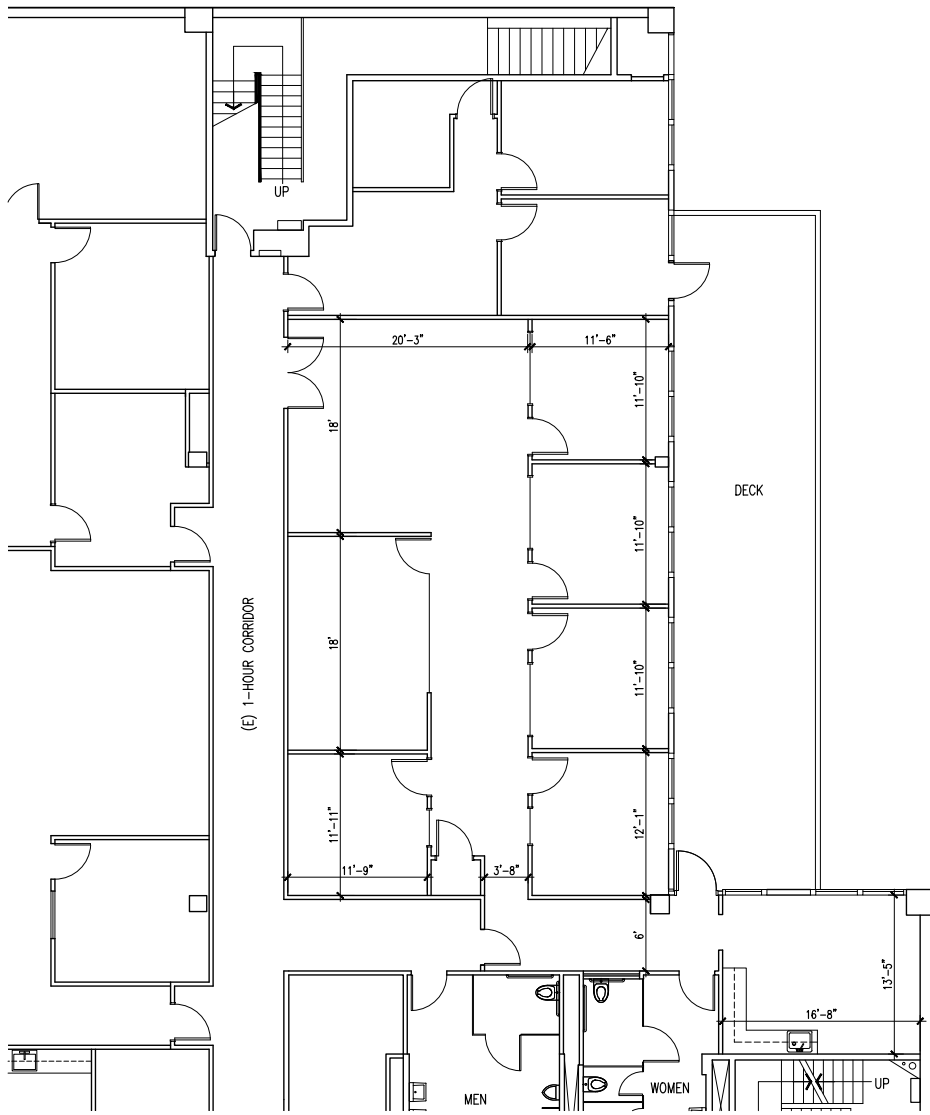
# FLOOR PLAN | Suite 810: 4,715 RSF



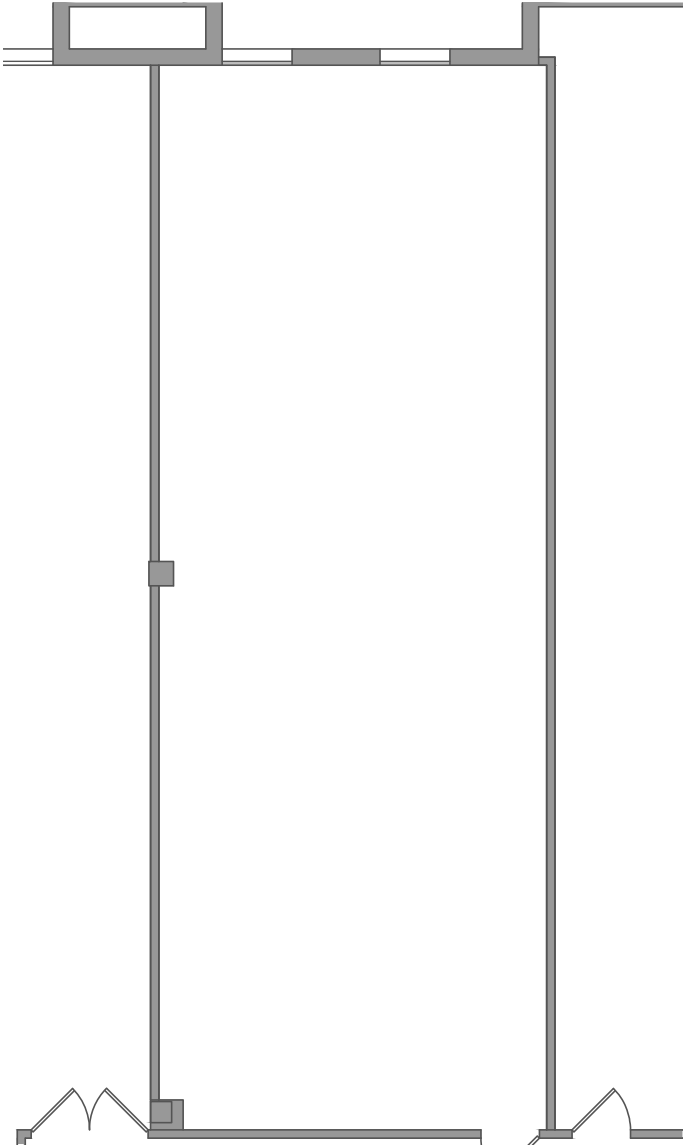
# FLOOR PLAN | Suite 825: 749 RSF



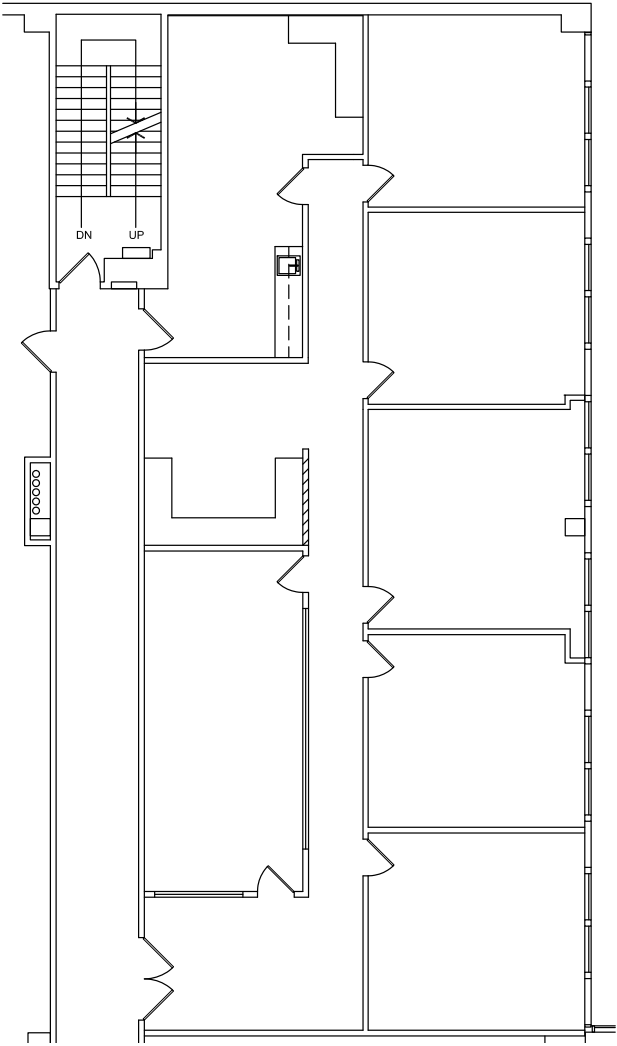
# FLOOR PLAN | Suite 850: 3,425 RSF Spec Suite



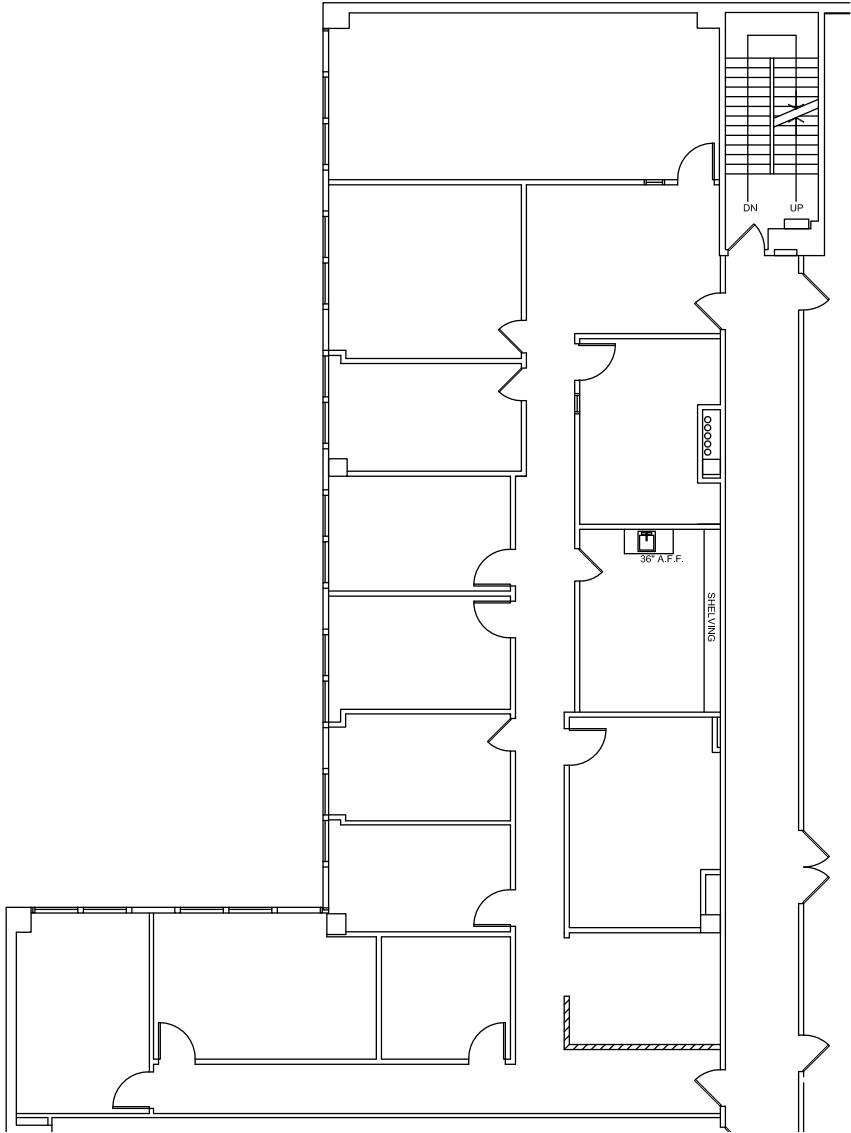
# FLOOR PLAN | Suite 908: 1,428 RSF



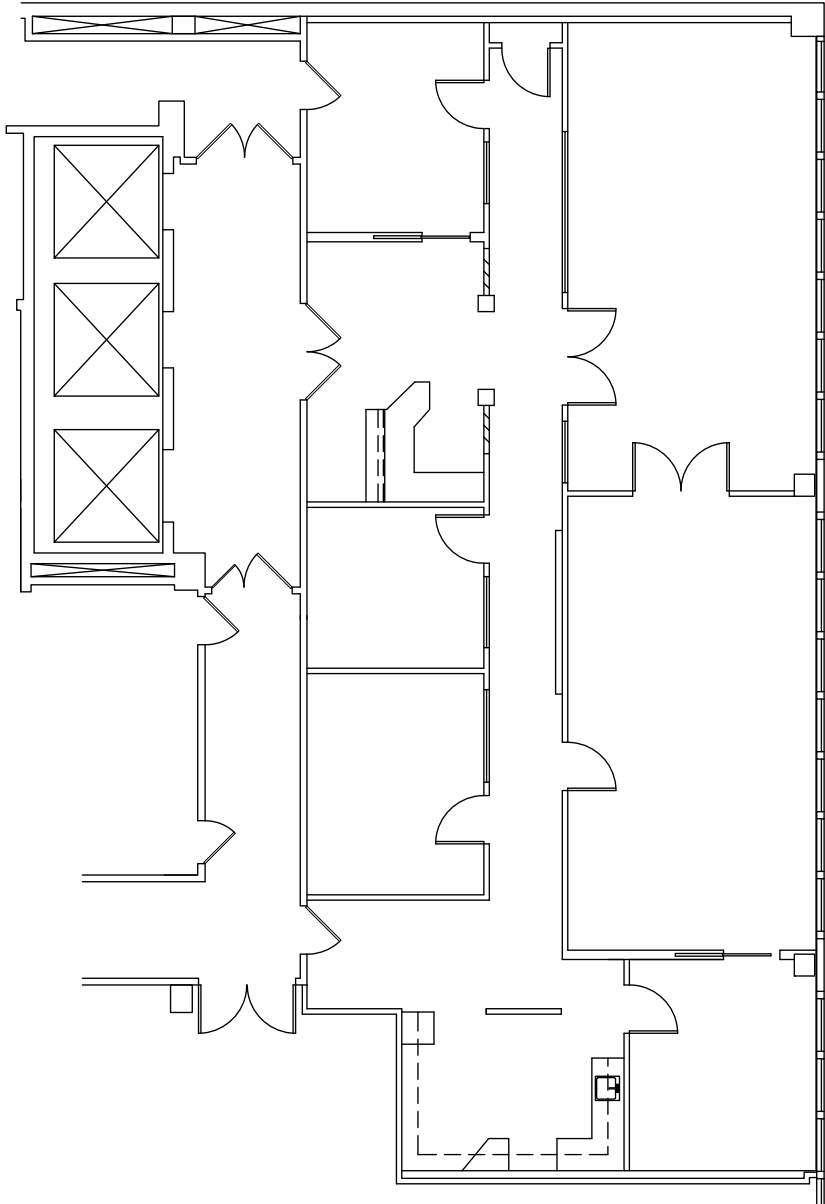
# FLOOR PLAN | Suite 909: 3,019 RSF



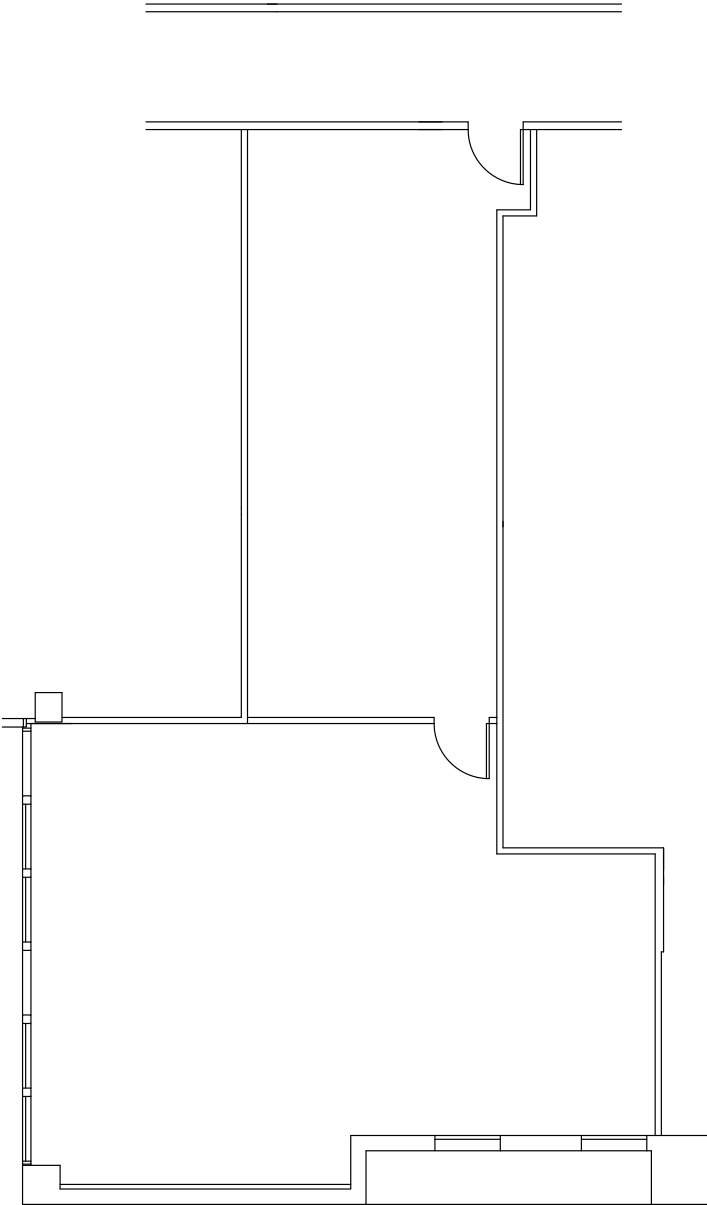
# FLOOR PLAN | Suite 910: 4,314 RSF



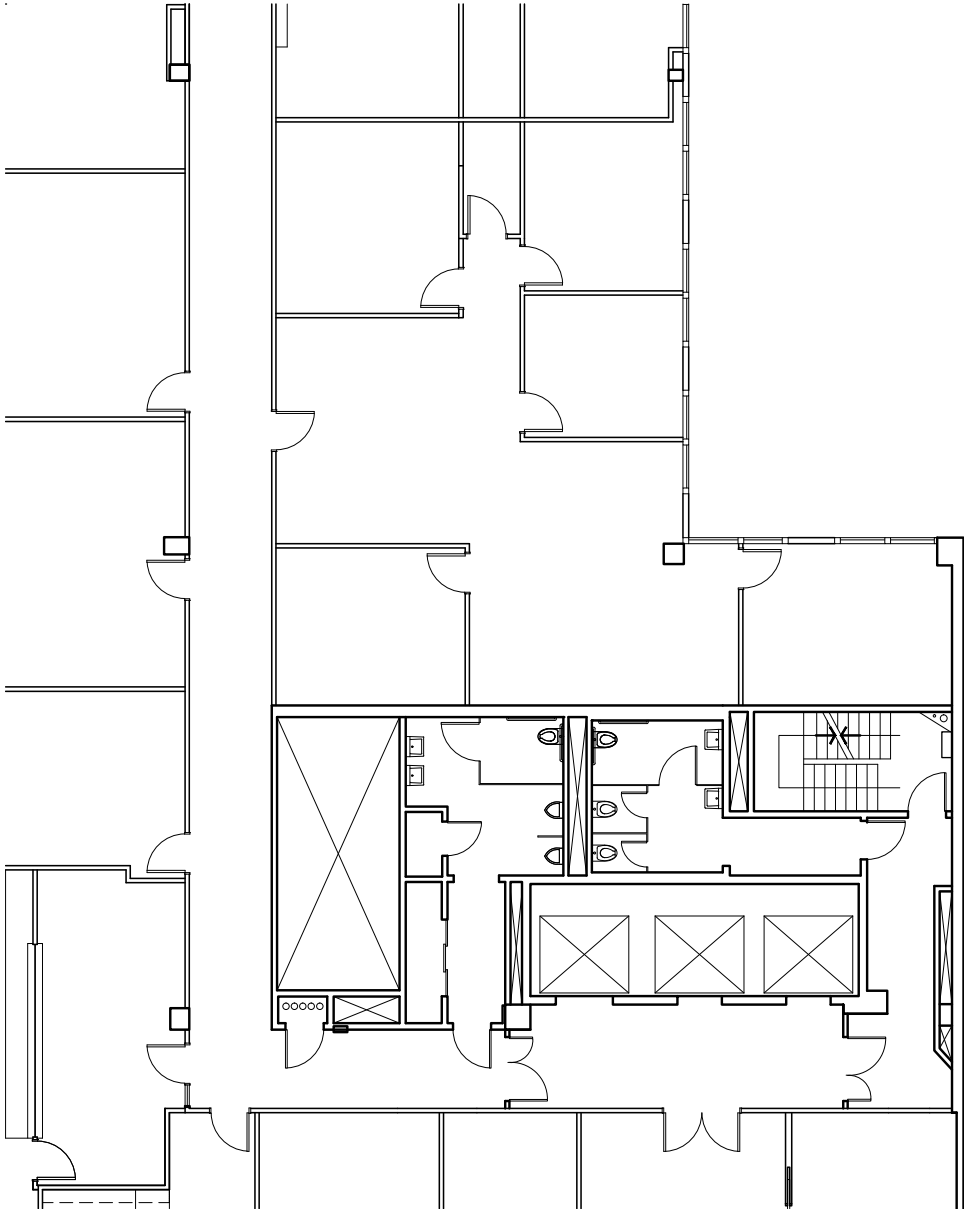
# FLOOR PLAN | Suite 1000: 2,896 RSF



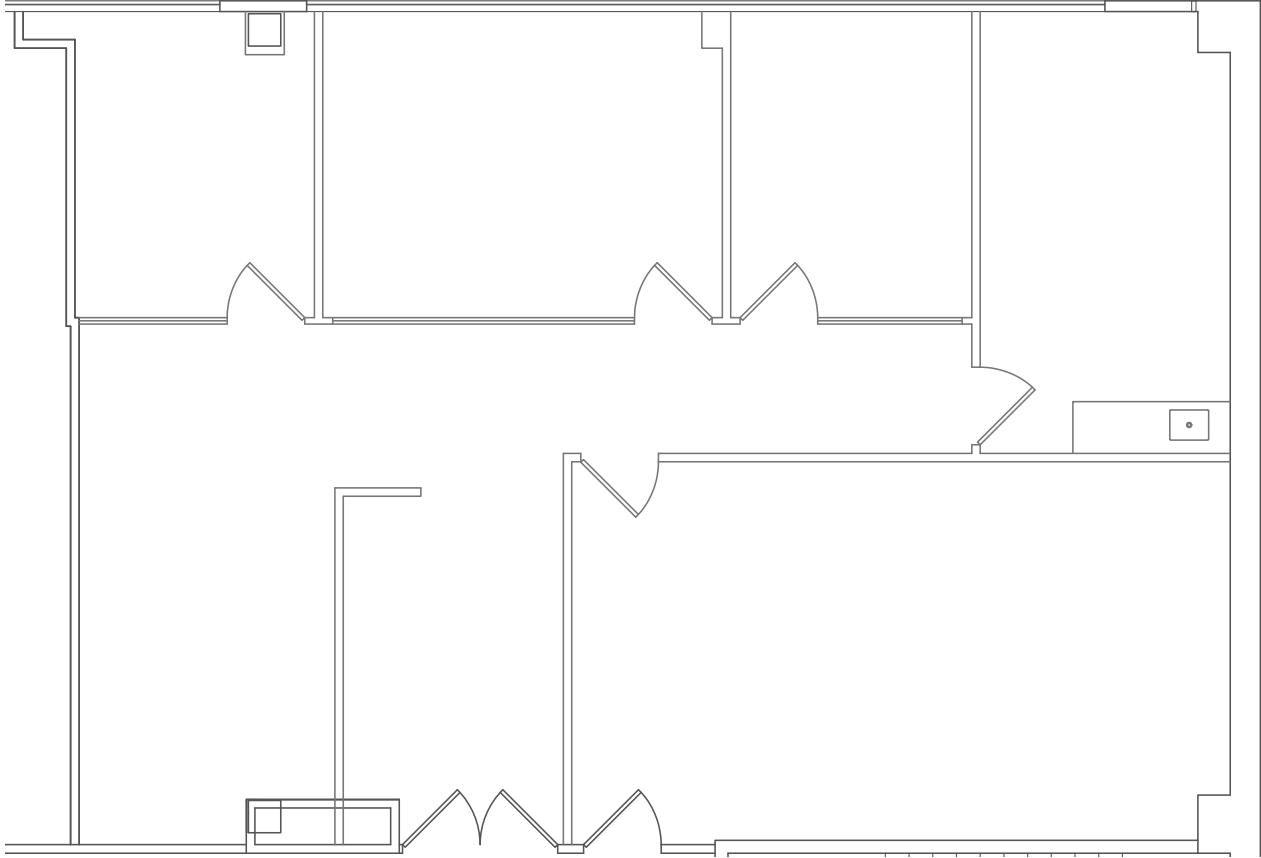
# FLOOR PLAN | Suite 1005: 1,576 RSF



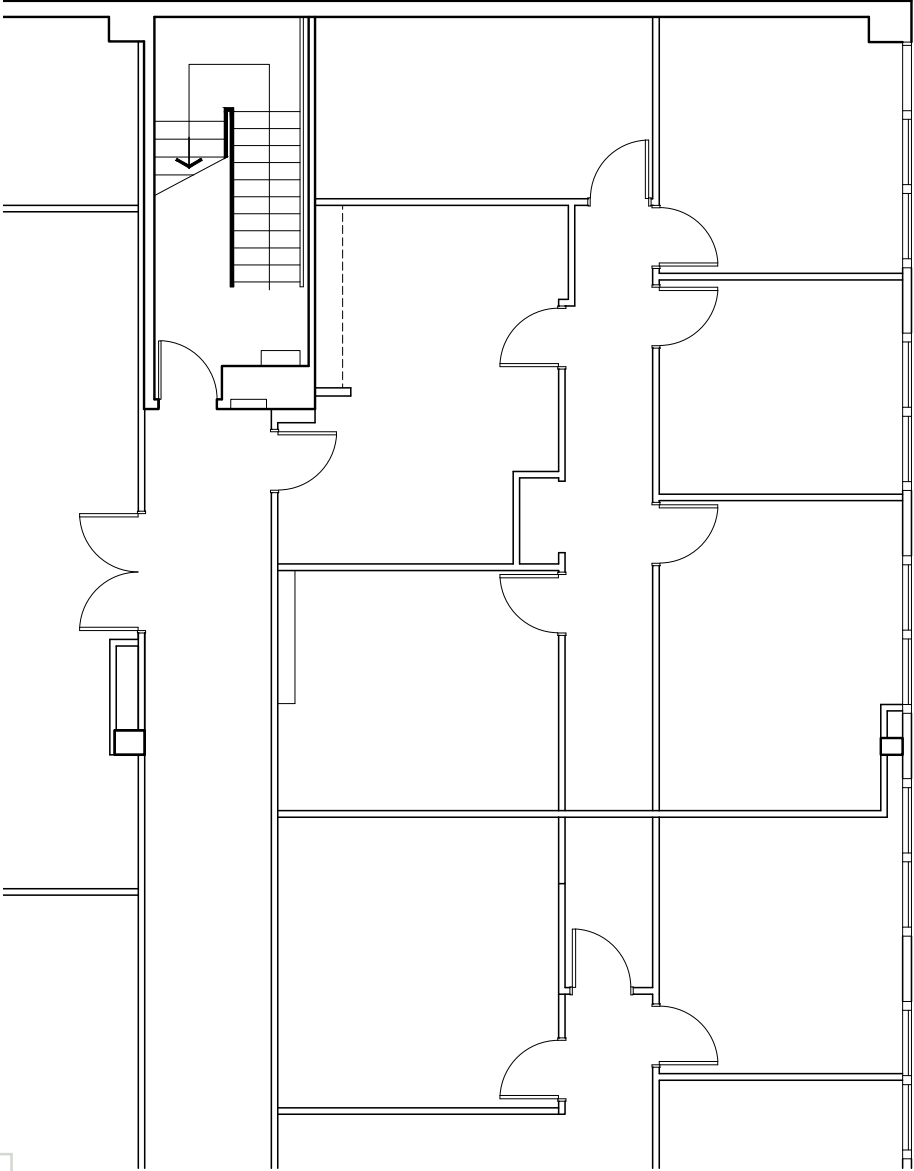
# FLOOR PLAN | Suite 1015: 2,291 RSF



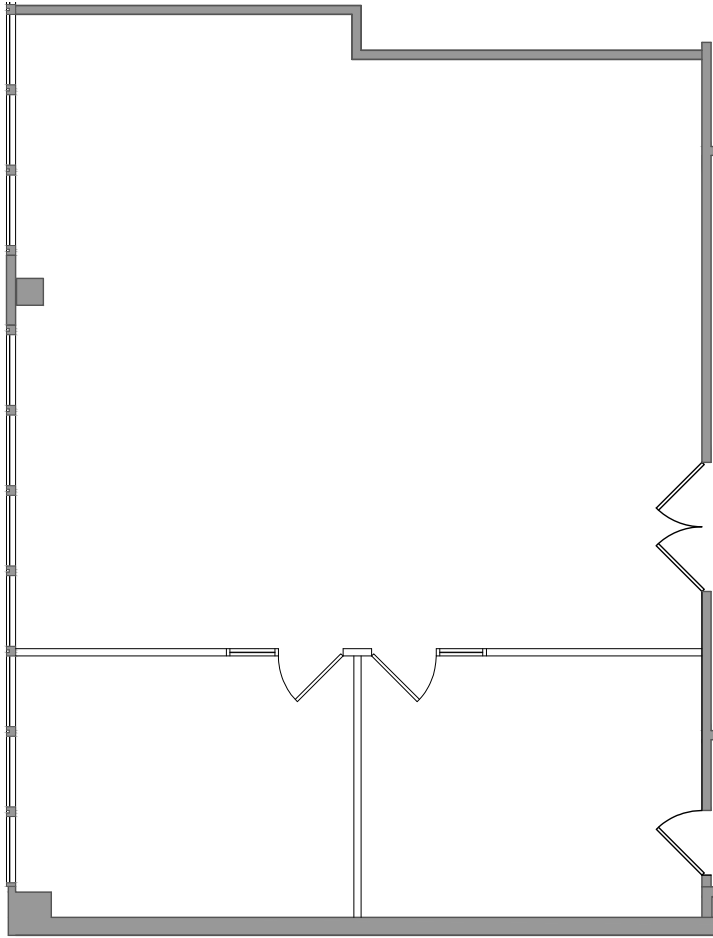
# FLOOR PLAN | Suite 1018: 1,853 RSF



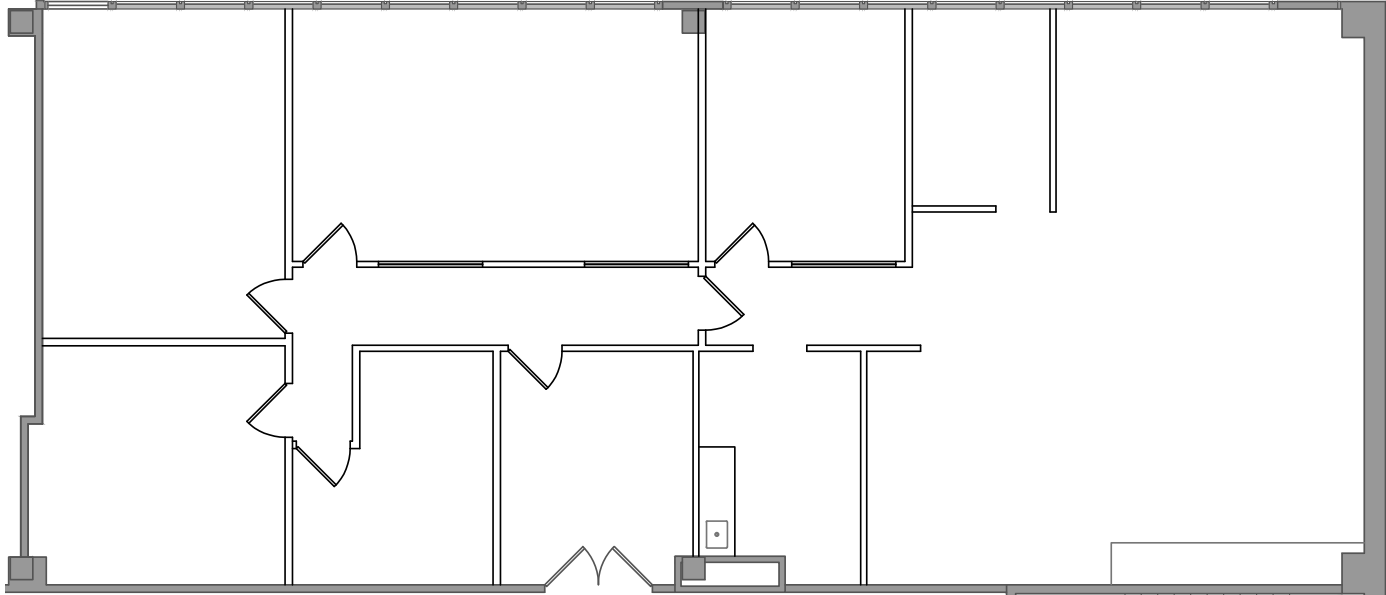
# FLOOR PLAN | Suite 1020: 1,650 RSF



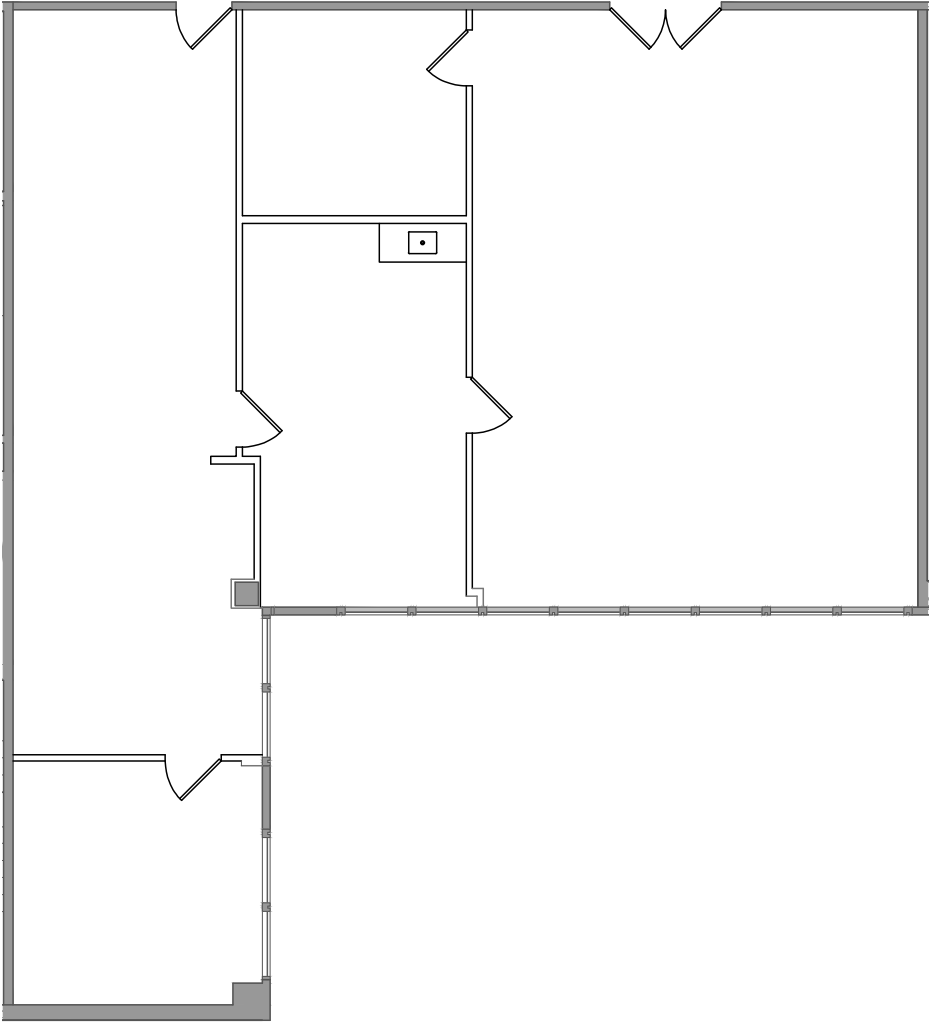
# FLOOR PLAN | Suite 1100: 1,700 RSF



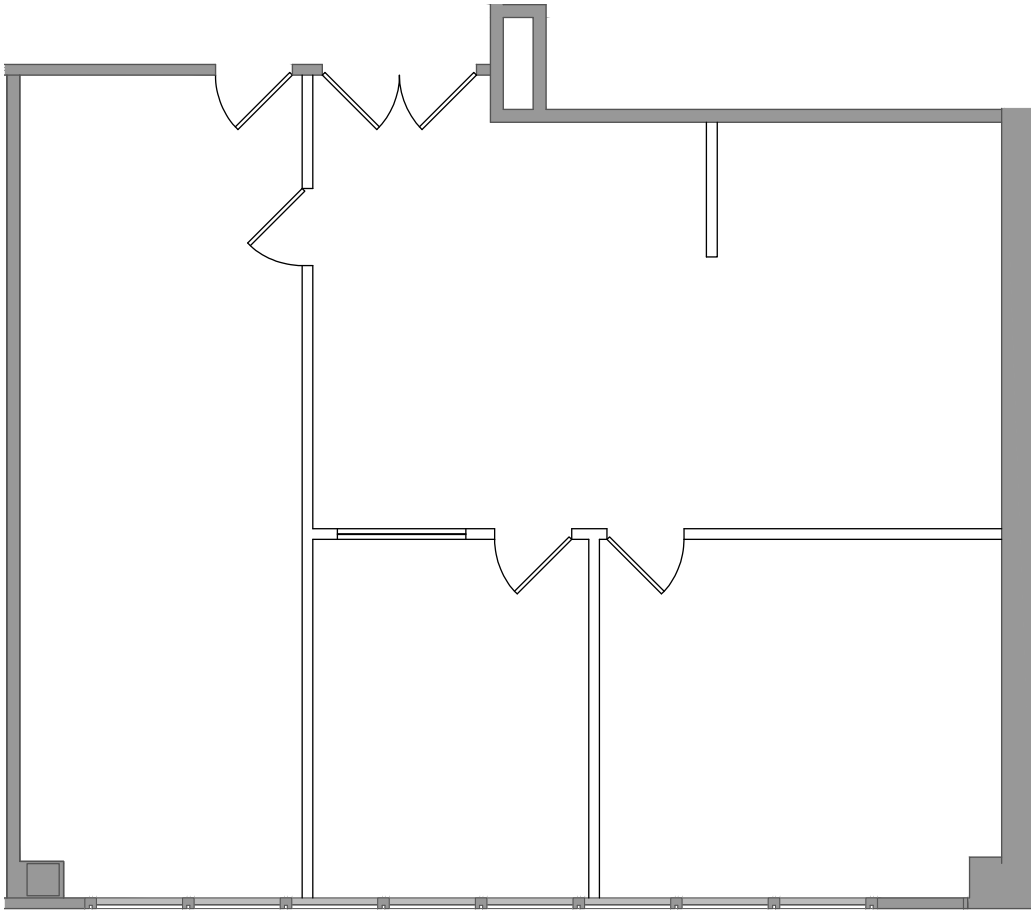
# FLOOR PLAN | Suite 1110: 3,965 RSF



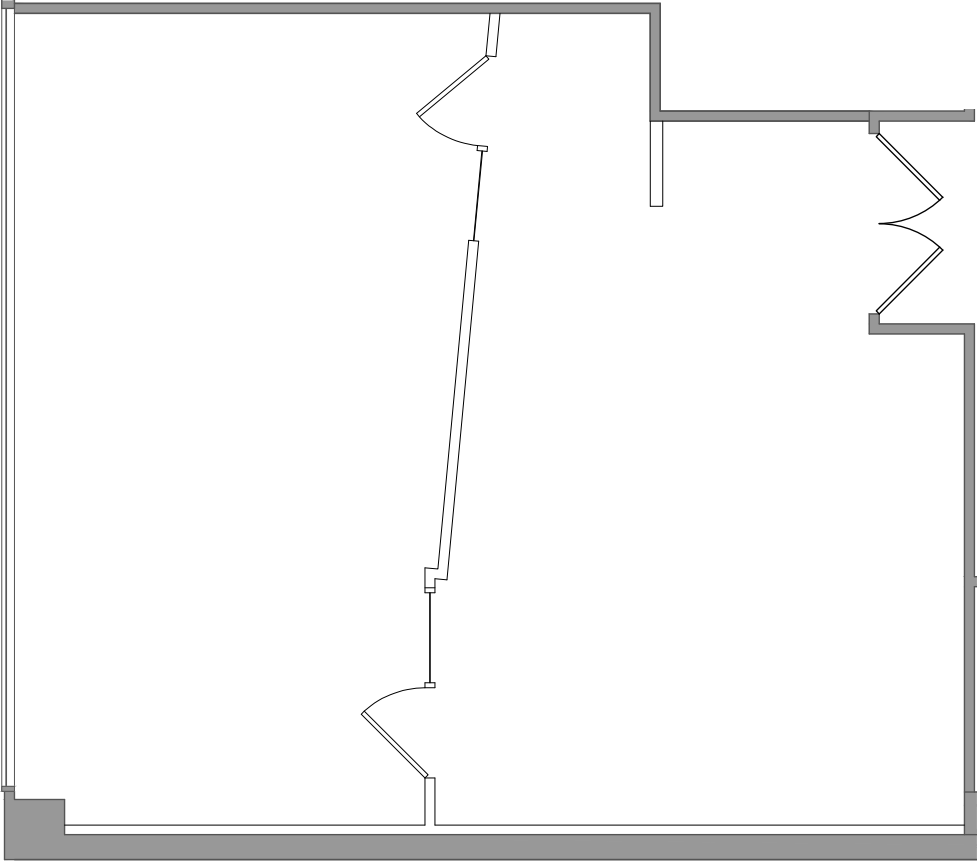
# FLOOR PLAN | Suite 1111: 2,398 RSF



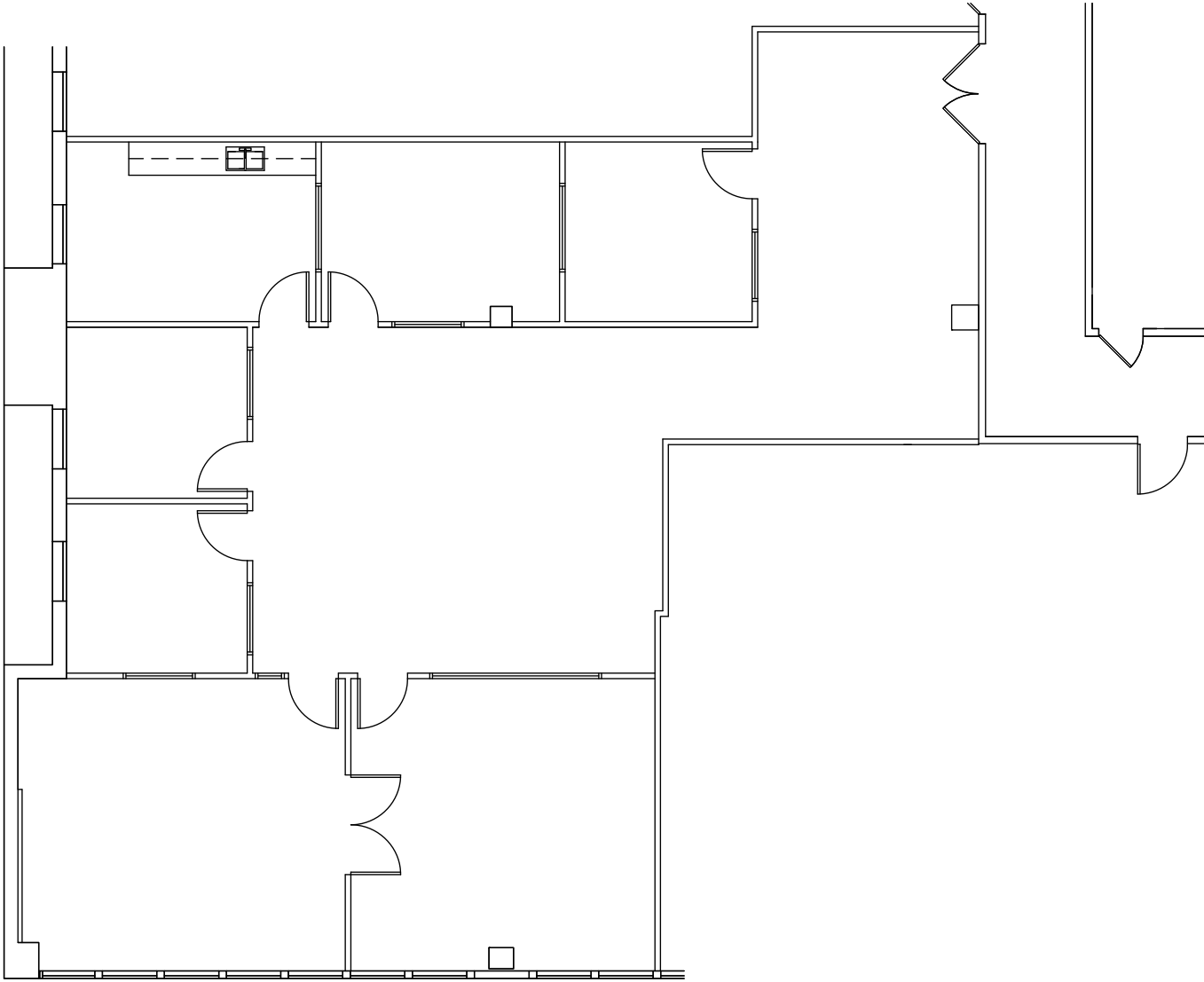
# FLOOR PLAN | Suite 1115: 1,553 RSF



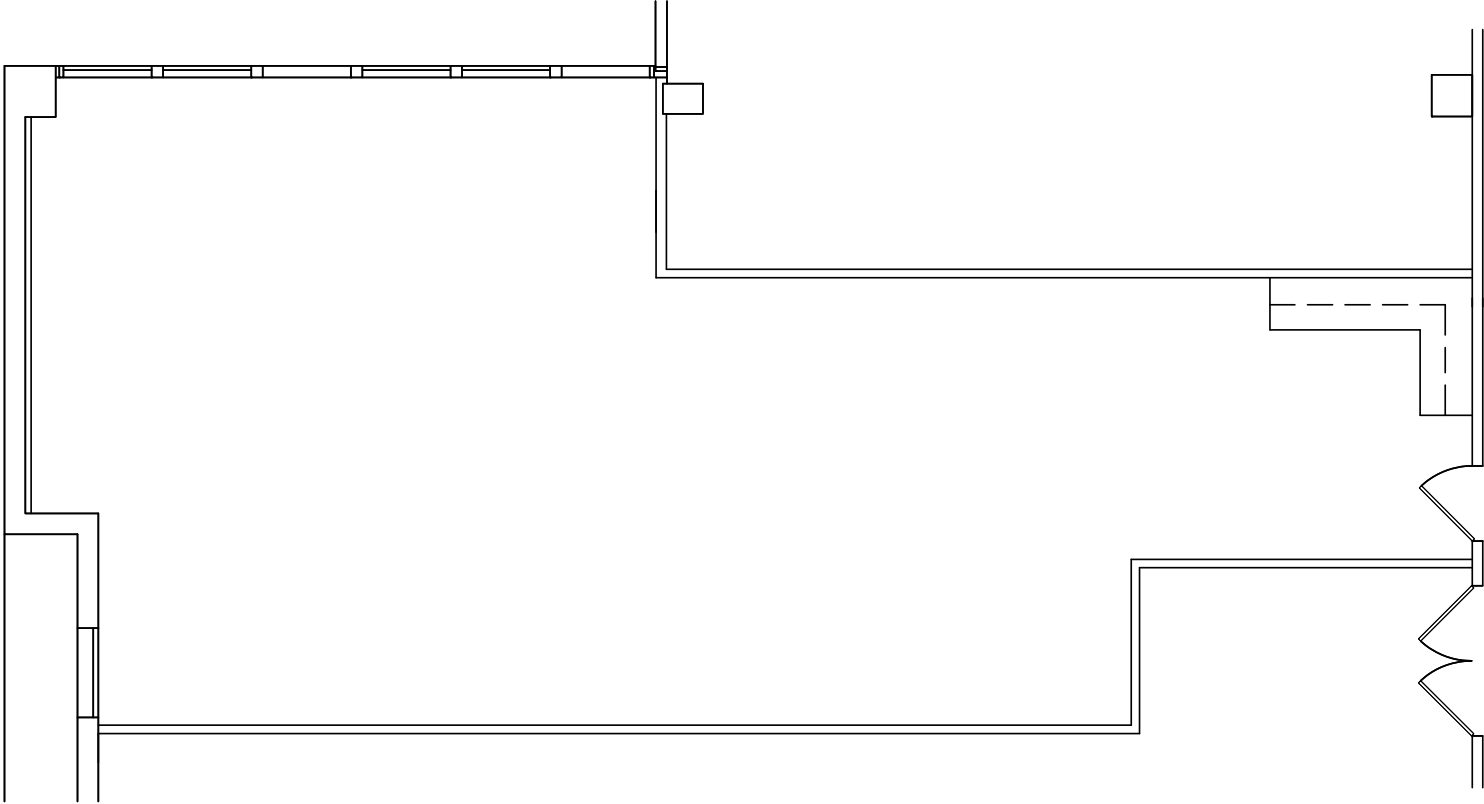
# FLOOR PLAN | Suite 1200: 1,082 RSF



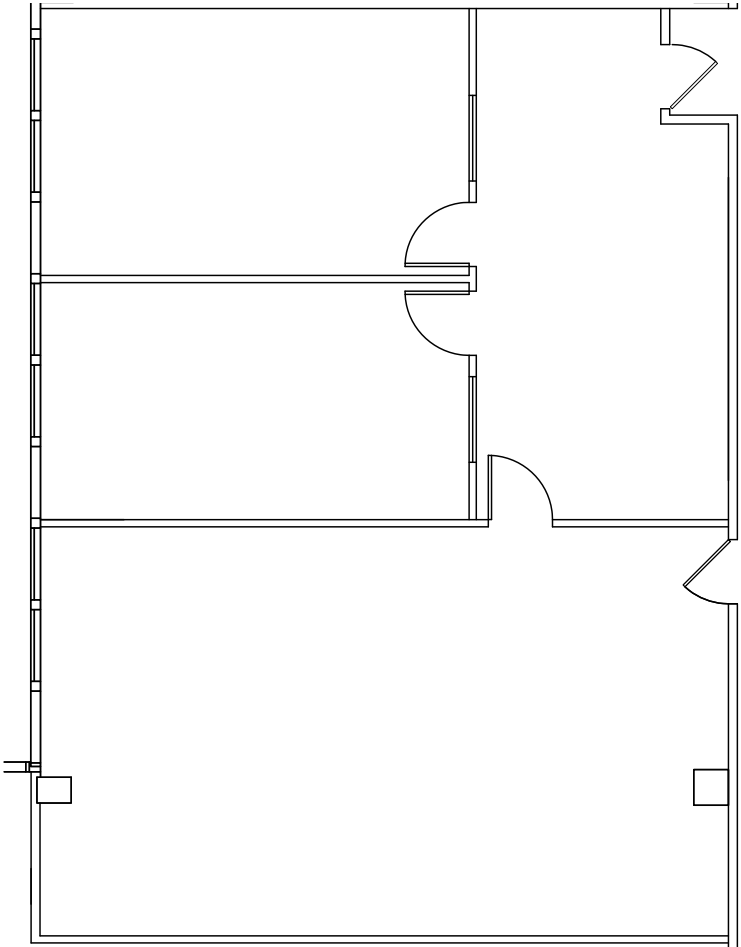
# FLOOR PLAN | Suite 1204: 2,961 RSF



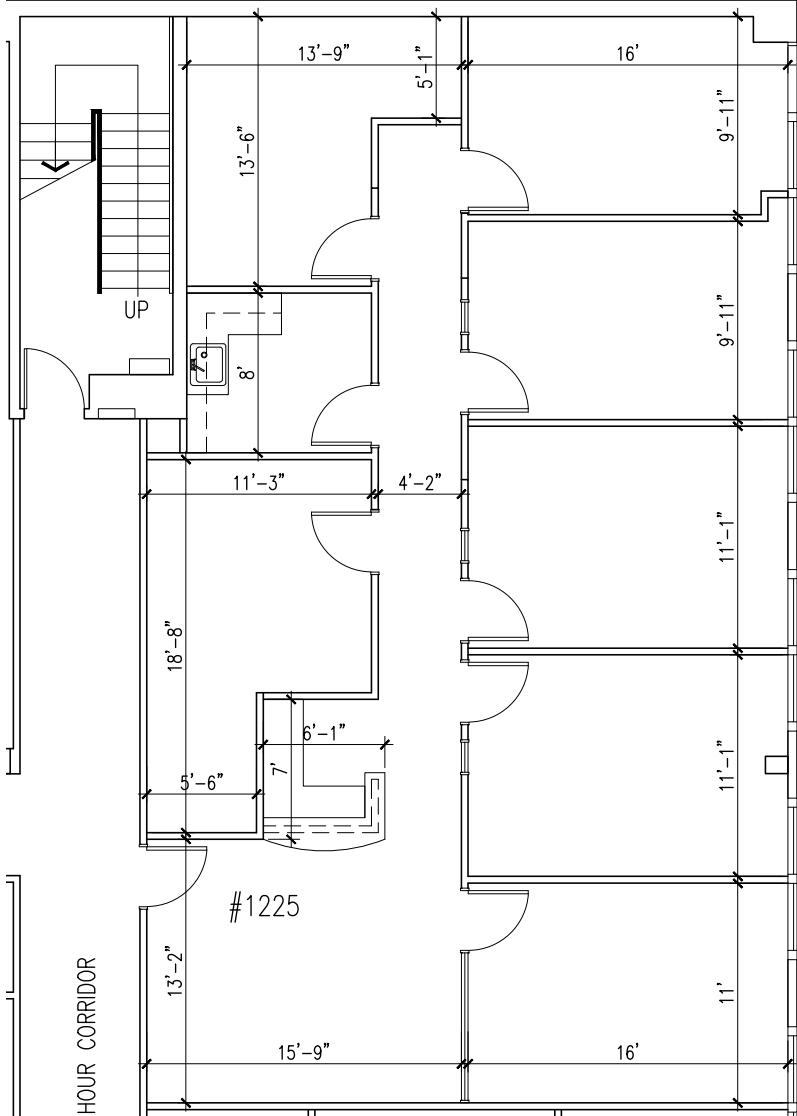
# FLOOR PLAN | Suite 1206: 1,462 RSF



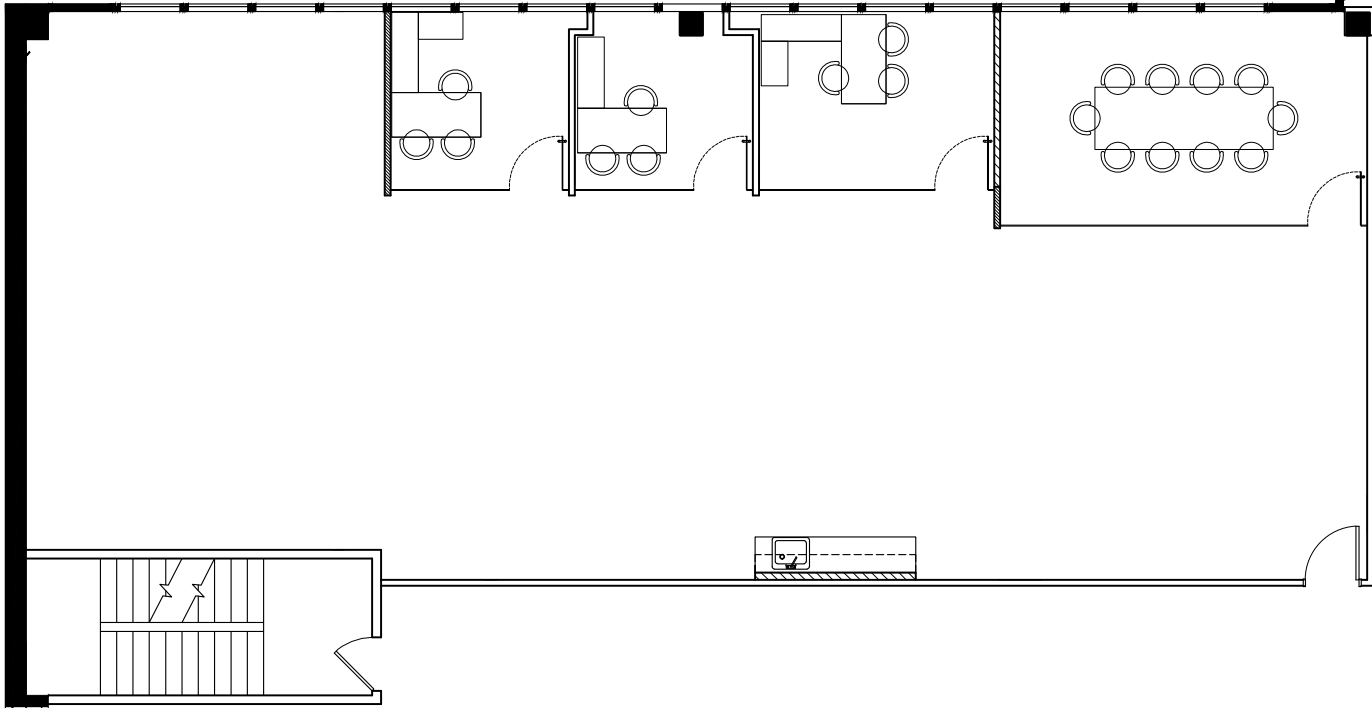
# FLOOR PLAN | Suite 1208: 807 RSF



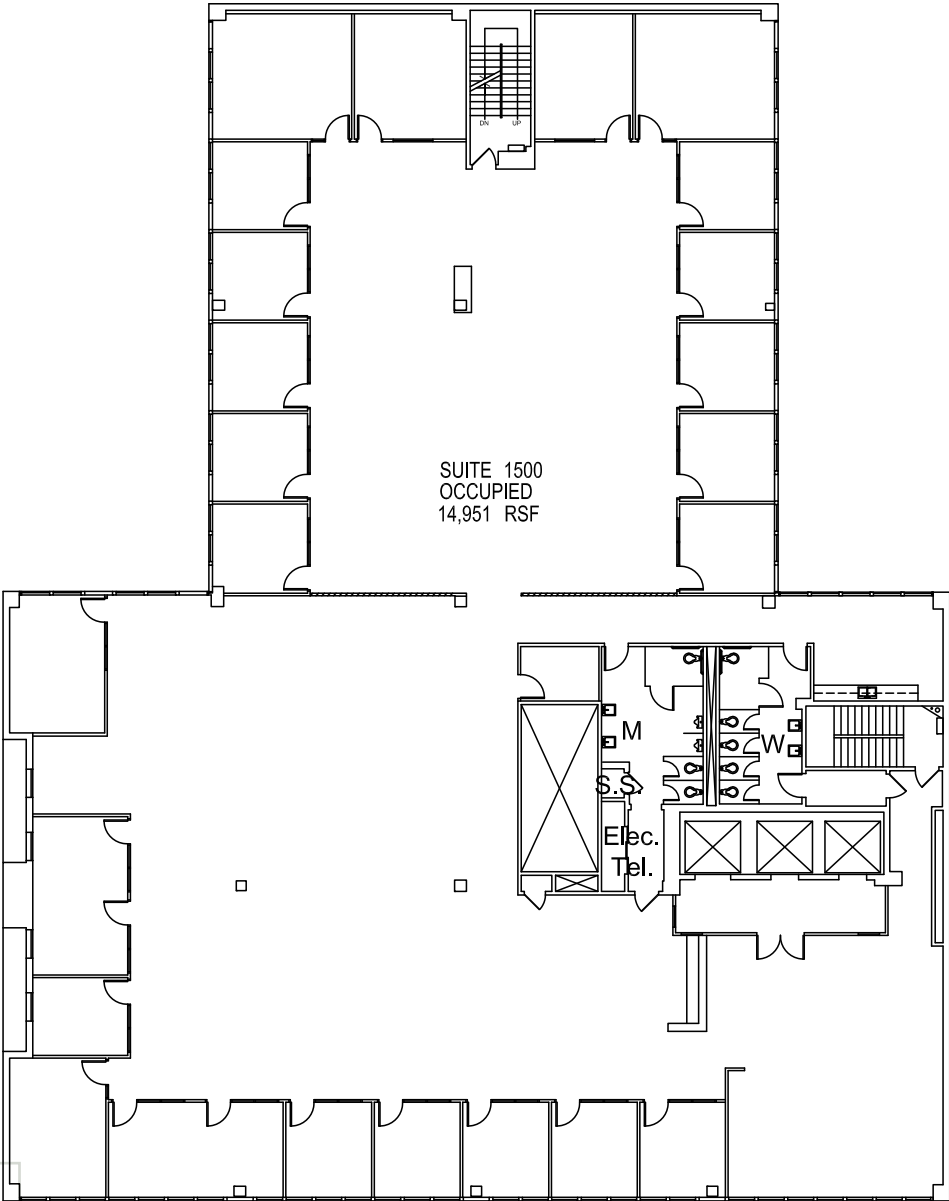
# FLOOR PLAN | Suite 1225: 2,230 RSF



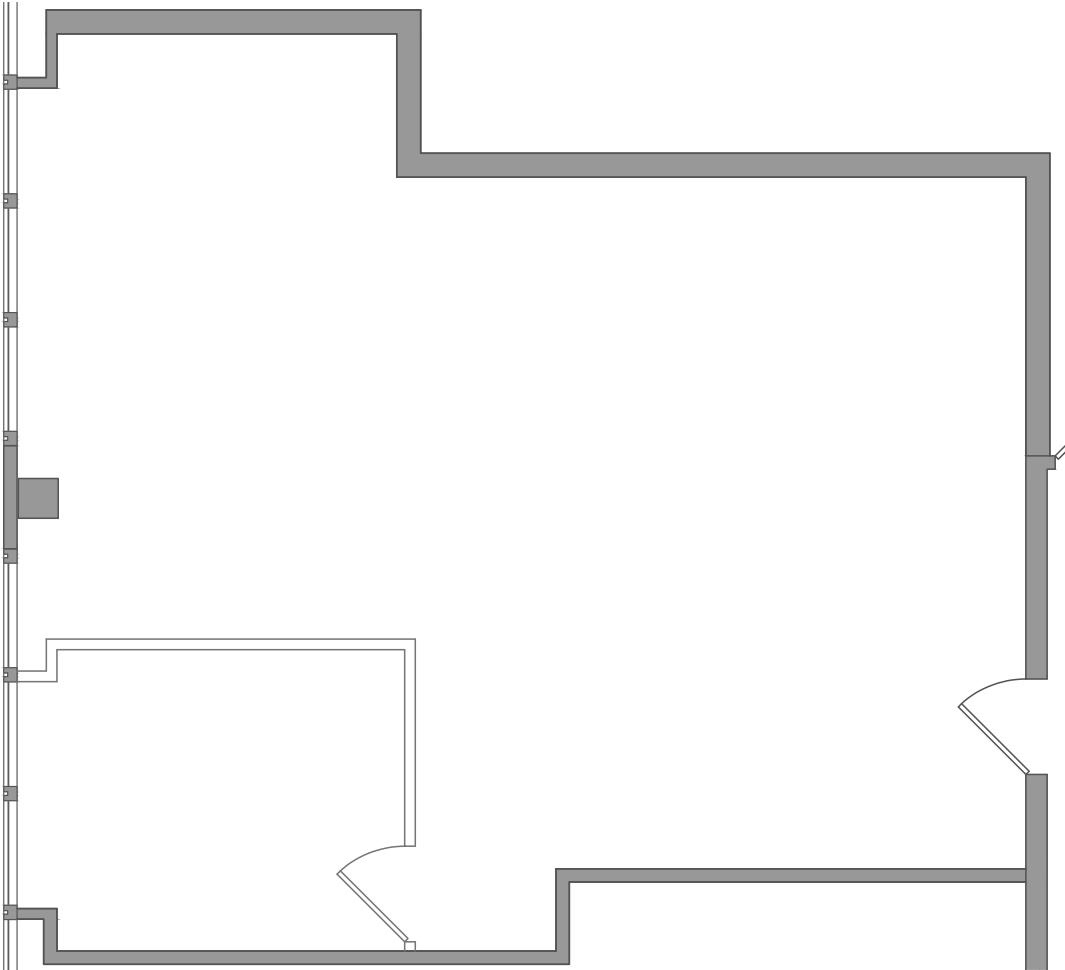
# FLOOR PLAN | Suite 1409: 3,188 RSF



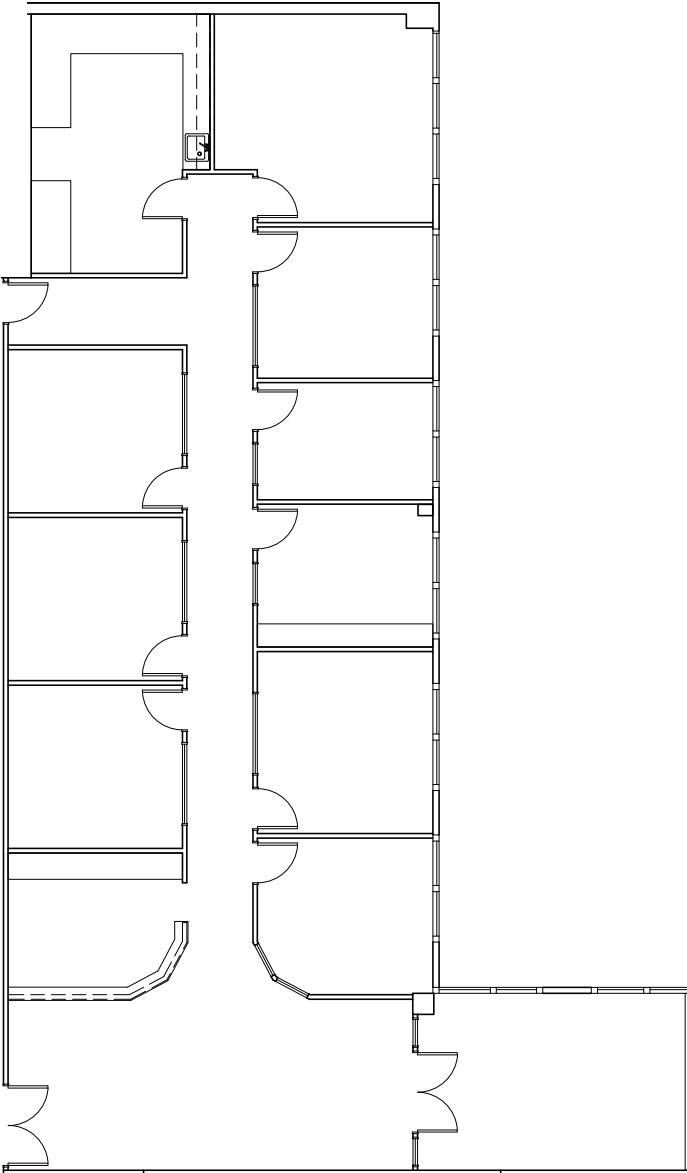
# FLOOR PLAN | Suite 1500: 15,008 RSF



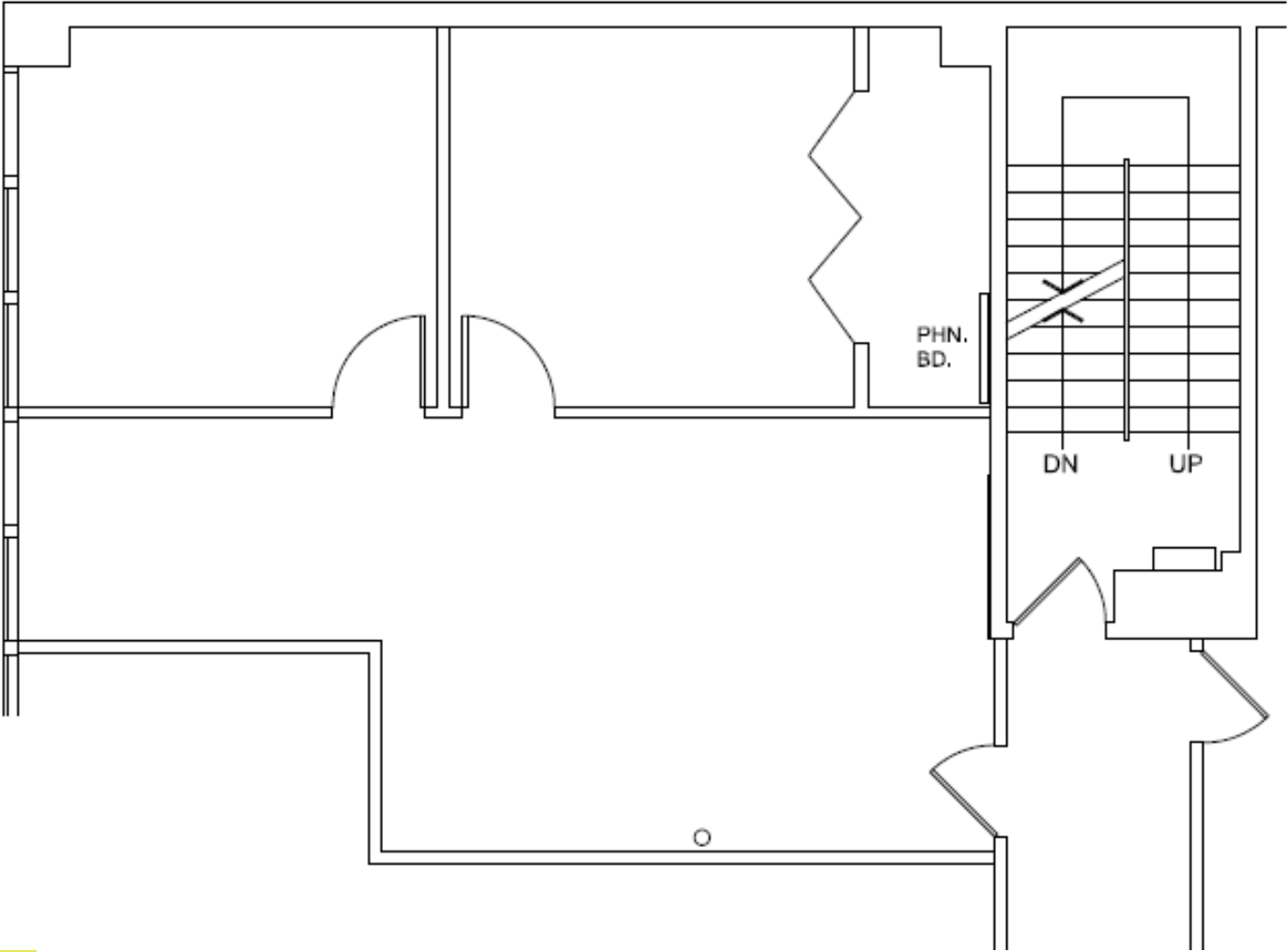
# FLOOR PLAN | Suite 1602: 1,047 RSF



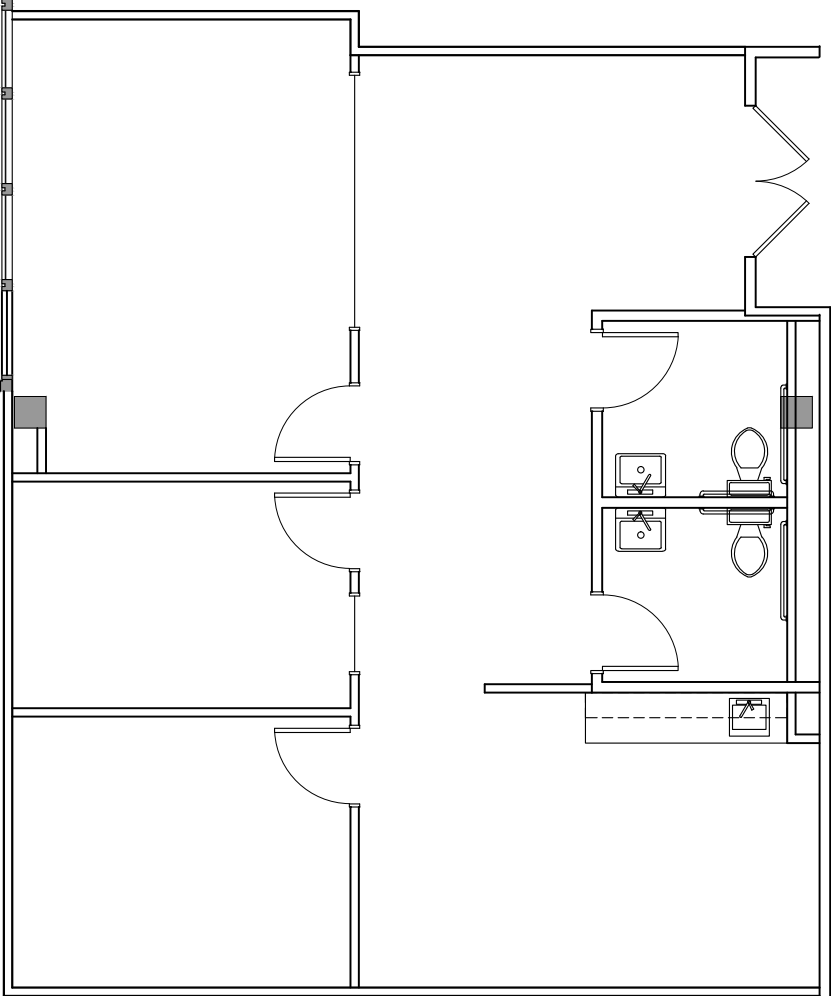
# FLOOR PLAN | Suite 1609: 3,949 RSF



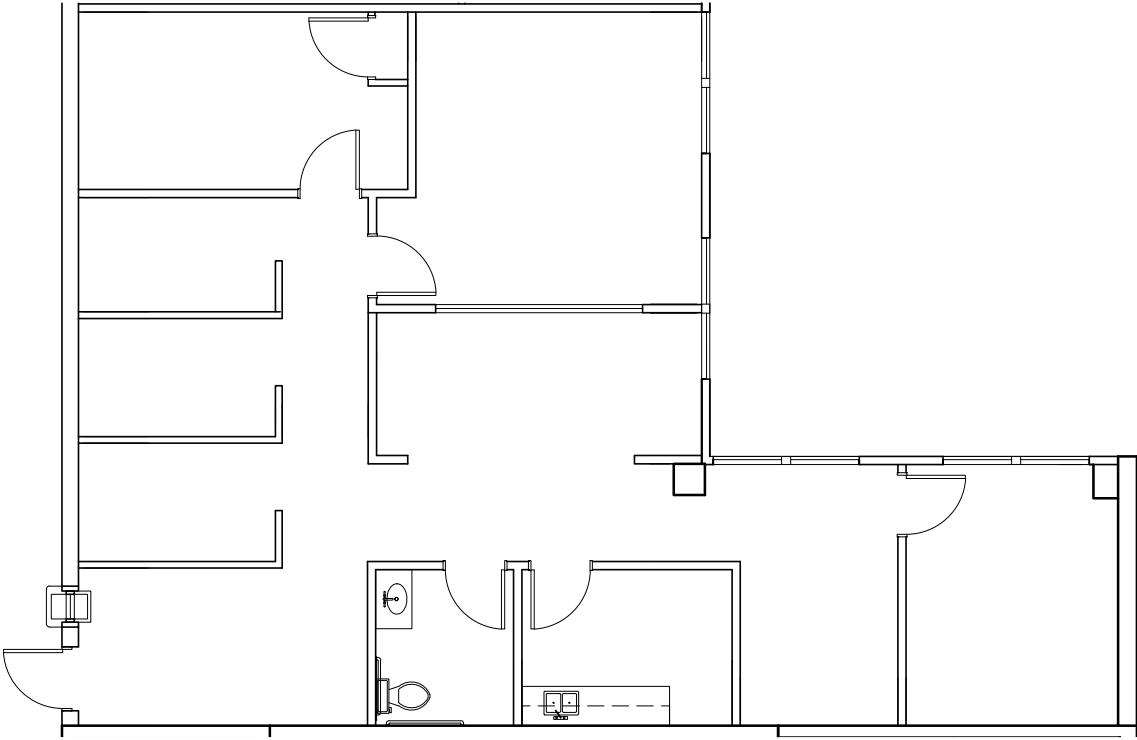
# FLOOR PLAN | Suite 1612: 1,023 RSF



# FLOOR PLAN | Suite 1701: 1,547 RSF Spec Suite



# FLOOR PLAN | Suite 1709: 1,894 RSF



# 6380

WILSHIRE BLVD  
LOS ANGELES, CA

**CBRE**

**BLAKE FOL**

Lic. 02013968  
+1 310 550 2683  
blake.fol@cbre.com

**JEFF GERLACH**

Lic. 01942825  
+1 310 550 2507  
jeff.gerlach@cbre.com

**STAN GERLACH**

Lic. 00745833  
+1 310 550 2662  
stan.gerlach@cbre.com

© 2021 CBRE, Inc. All rights reserved. This information has been obtained from sources believed reliable, but has not been verified for accuracy or completeness. You should conduct a careful, independent investigation of the property and verify all information. Any reliance on this information is solely at your own risk. CBRE and the CBRE logo are service marks of CBRE, Inc. All other marks displayed on this document are the property of their respective owners, and the use of such logos does not imply any affiliation with or endorsement of CBRE.