



MERRIMAC PLAZA

180 Haverhill Street
Methuen, MA 01844

MARKET BASKET • RITE AID • MCDONALD'S





MERRIMAC PLAZA

180 Haverhill Street
Methuen, MA 01844

MARKET BASKET • RITE AID
MCDONALD'S

Merrimac Plaza is a highly trafficked, 180,000 square foot shopping center featuring Market Basket, Dots, Dollar Tree, Rite Aid, McDonald's, Bank of America, and small shop office space.

LOCATION

Haverhill Street on Route 110, one-half mile from I-93, is a major thoroughfare of commercial businesses and retail shopping in the Merrimack Valley.

TRADE AREA

This popular neighborhood center serves the dense residential population as well as being a very convenient stop for the large population of area workers.

AVERAGE DAILY TRAFFIC

**Haverhill Street (Route 110)
at Elm Street:** 18,000 vehicles
per day

(2018 SitesUSA)

MERRIMAC PLAZA

180 Haverhill Street
Methuen, MA 01844

MARKET BASKET • RITE AID
MCDONALD'S

2018 ESTIMATES

	3 MILES	5 MILES	10 MIN DRIVE
Population	118,164	192,114	245,673
Average HH Income	\$75,884	\$96,502	\$101,448
Median Age	34 yrs	36 yrs	38 yrs
Workplace Population	64,363	101,910	139,068

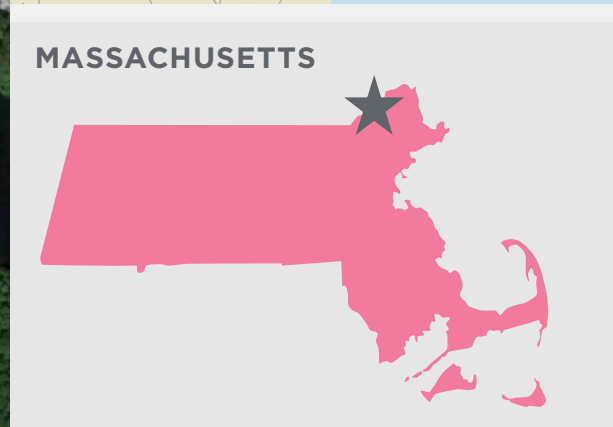
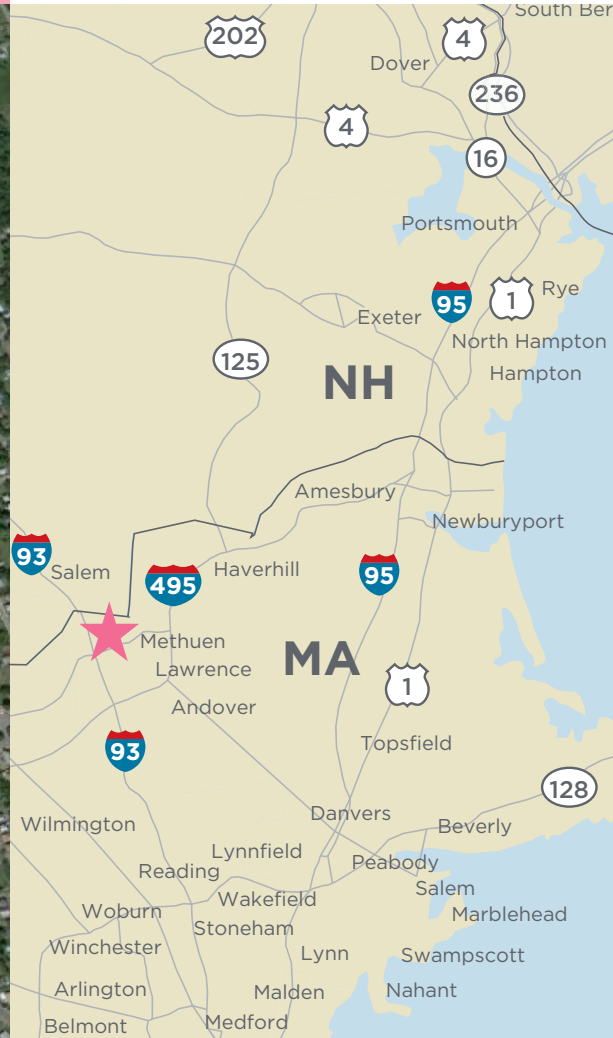
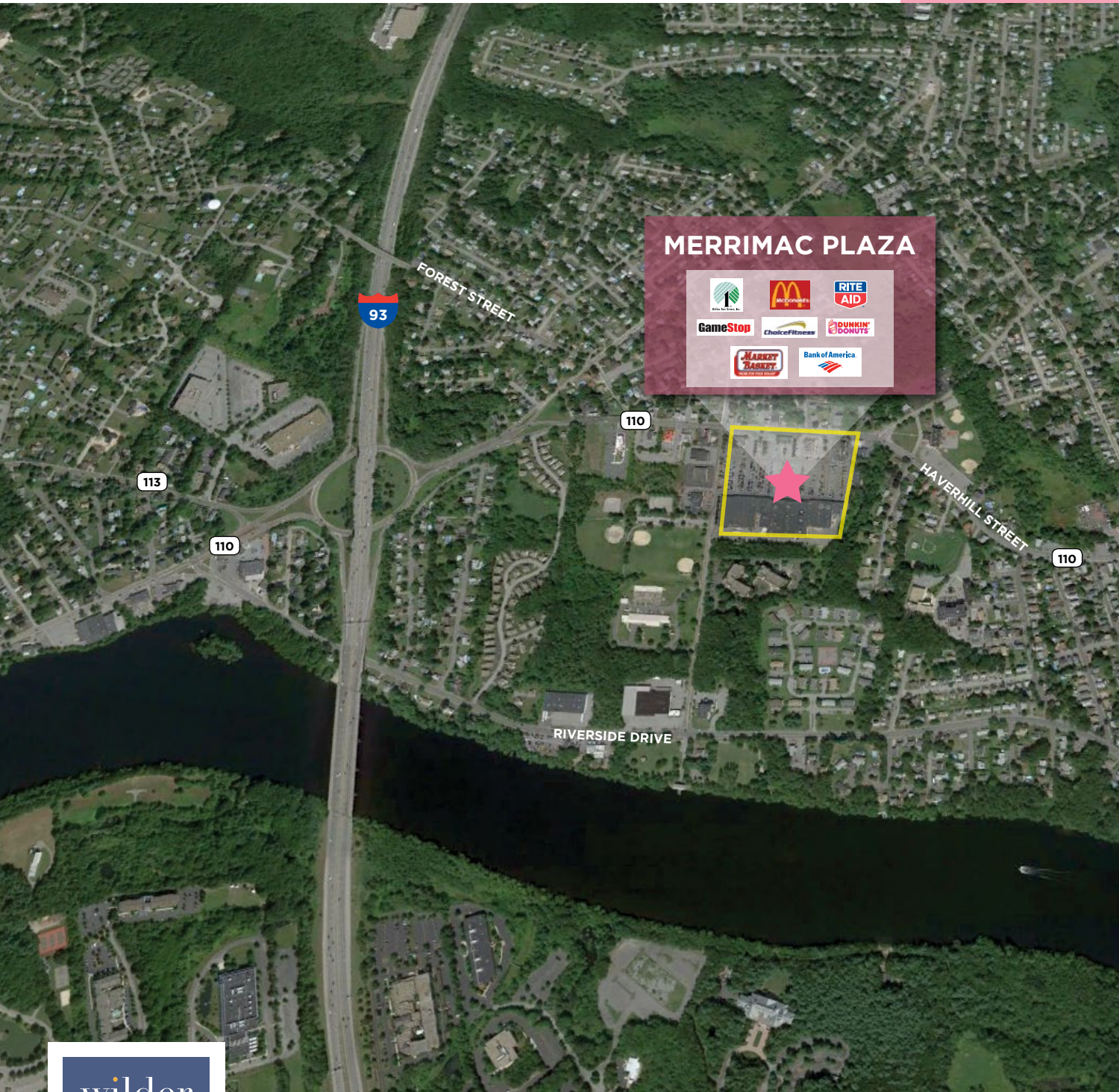
(2018 SitesUSA)

MERRIMAC PLAZA

180 Haverhill Street
Methuen, MA 01844

MARKET BASKET • RITE AID
MCDONALD'S









MERRIMAC PLAZA

180 Haverhill Street
Methuen, MA 01844

MARKET BASKET • RITE AID
MCDONALD'S

ABOUT WILDER

Wilder is a Boston-based real estate development, management, and leasing firm specializing in the positioning of retail properties. Privately held and owner managed, Wilder's mission has been and continues to be to create vibrant shopping places that meet and exceed the expectations of our customers, retailers, and investors.

From lifestyle centers, urban properties, and community centers to mixed-use developments and super-regional malls, Wilder, in its 40-year history, has developed, managed, and leased over 20 million square feet of retail properties throughout the United States and Puerto Rico.

The company continues to have a diverse portfolio of properties throughout the East Coast.

FOR MORE INFORMATION

Sarah Wilson

Senior Leasing Representative

swilson@wilderco.com
617.896.4972

WILDER

800 Boylston Street, Suite 1300
Boston, MA 02199
617.247.9200

www.wilderco.com
info@wilderco.com

