



FOR LEASE

THE ATRIUM AT CHESTERFIELD

16305 SWINGLEY RIDGE RD
CHESTERFIELD, MO 63017



662 - 12,427
RSF Available



I-64 access
and visibility



Building &
Monument Signage
Available



4/1000 Garage
Parking



Fitness center and
storage space

Brandon Wappelhorst, CCIM, SIOR
bwappelhorst@sansonegroup.com

Tom Bajardi, CCIM, SIOR
tbajardi@sansonegroup.com

Nick Fiquette
nfiquette@sansonegroup.com

Property Features

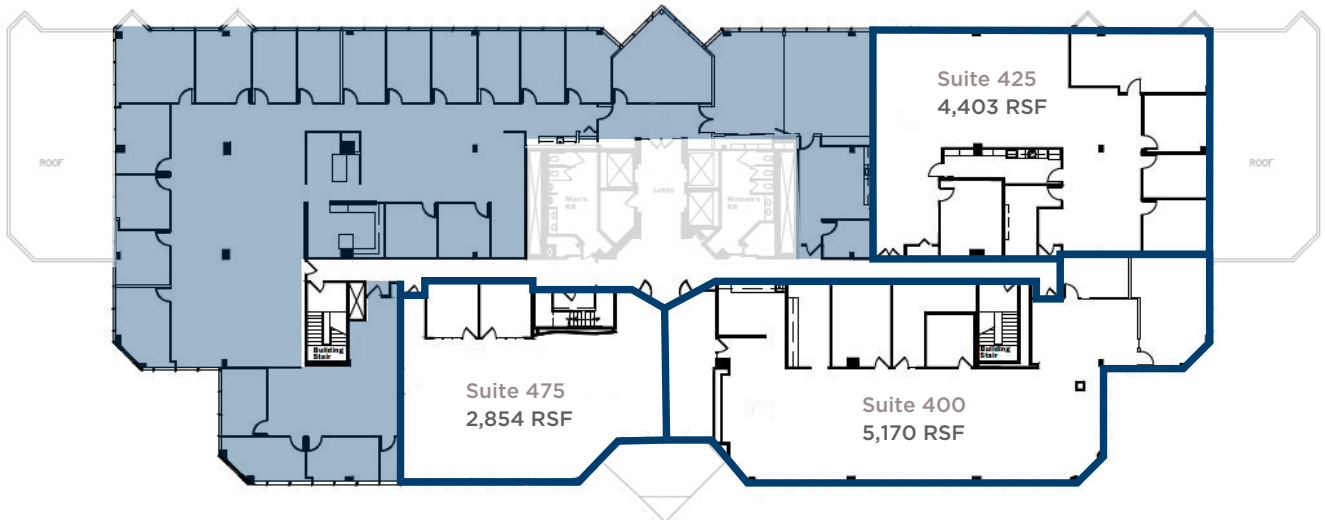
- Located in the heart of Chesterfield Village
- Fitness center and storage space
- Building & monument signage available
- I-64 access and visibility
- 4/1000 garage parking
- Owner Occupied / Debt Free

Availabilities

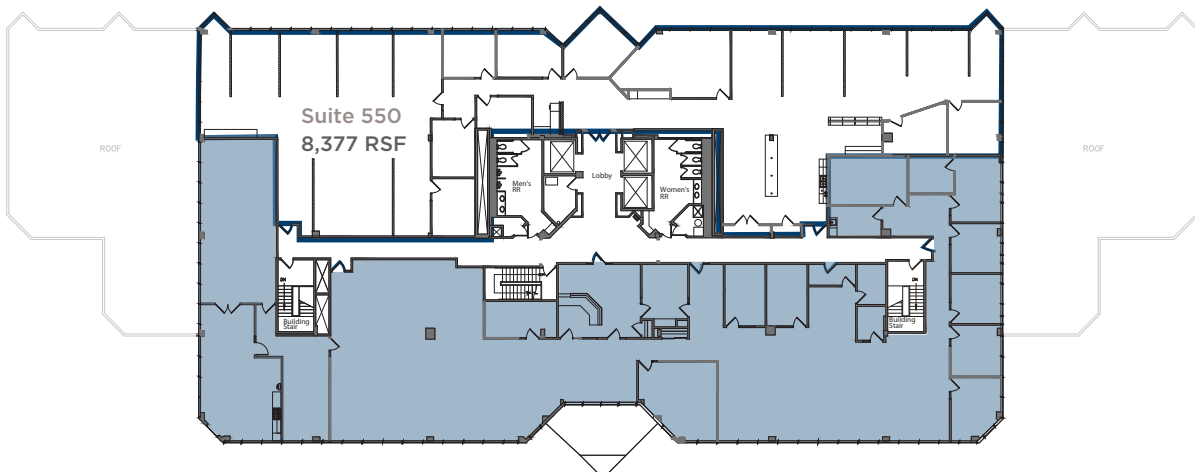
SUITE	RSF	
220	662	
230	8,708	
340	4,656	
400	5,170	} 12,427
425	4,403	
475	2,854	
550	8,377	

Floor Plans

4th Floor | 12,427 RSF

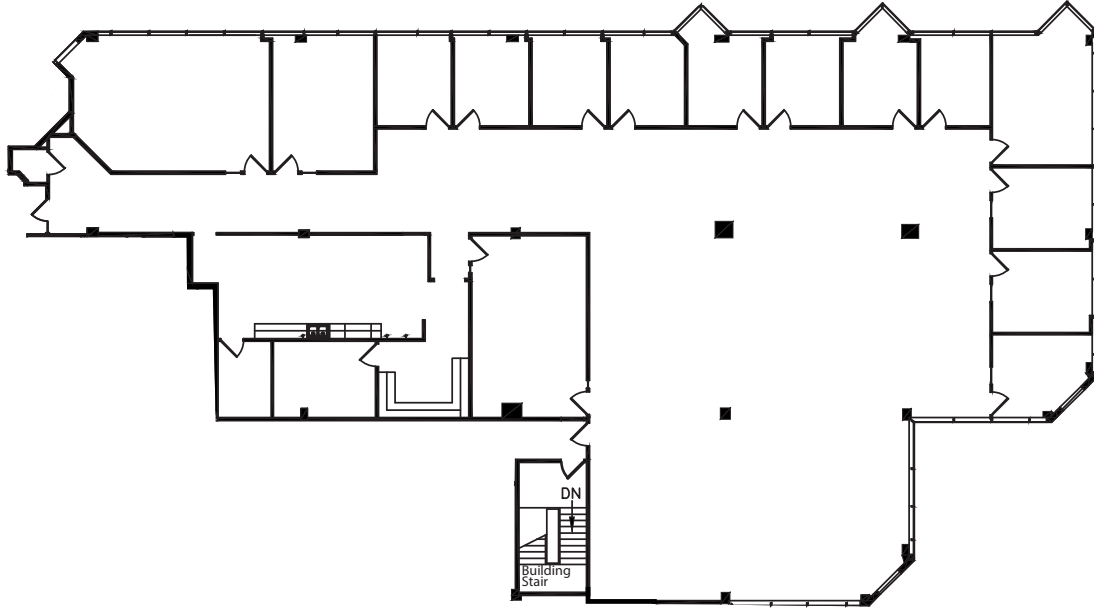


5th Floor | 8,377 RSF

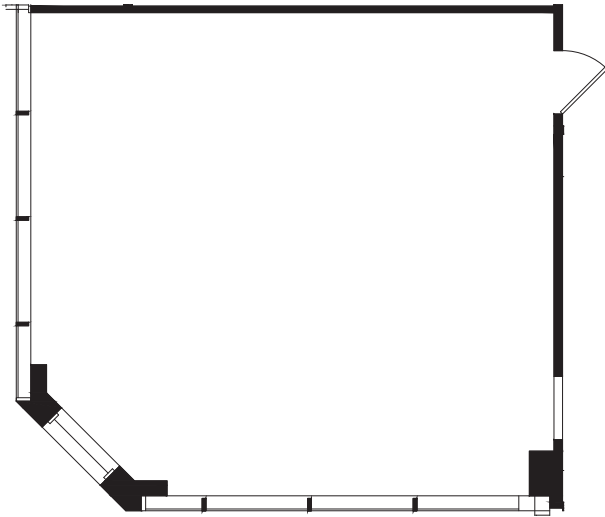


Floor Plans

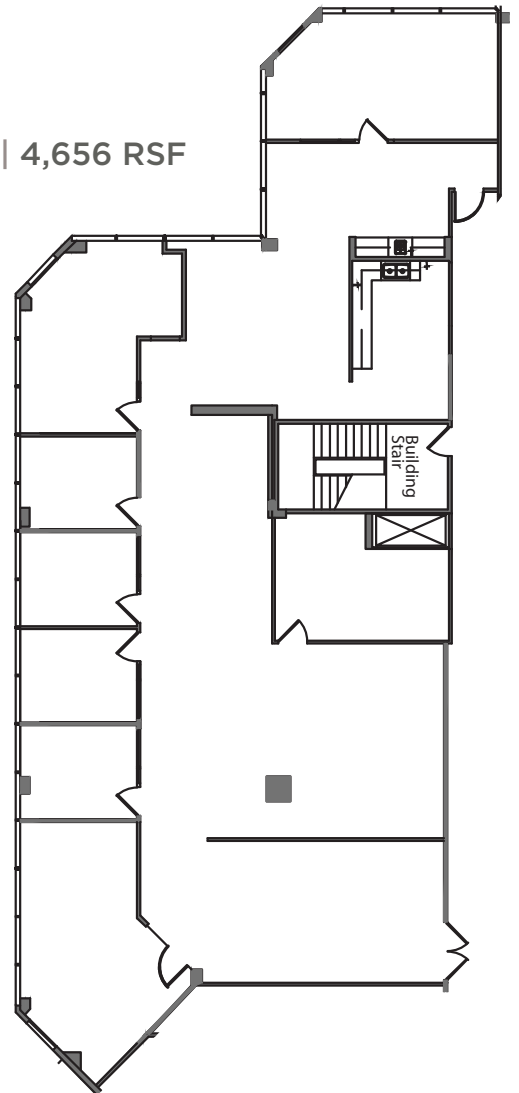
Suite 230 | 8,708 RSF

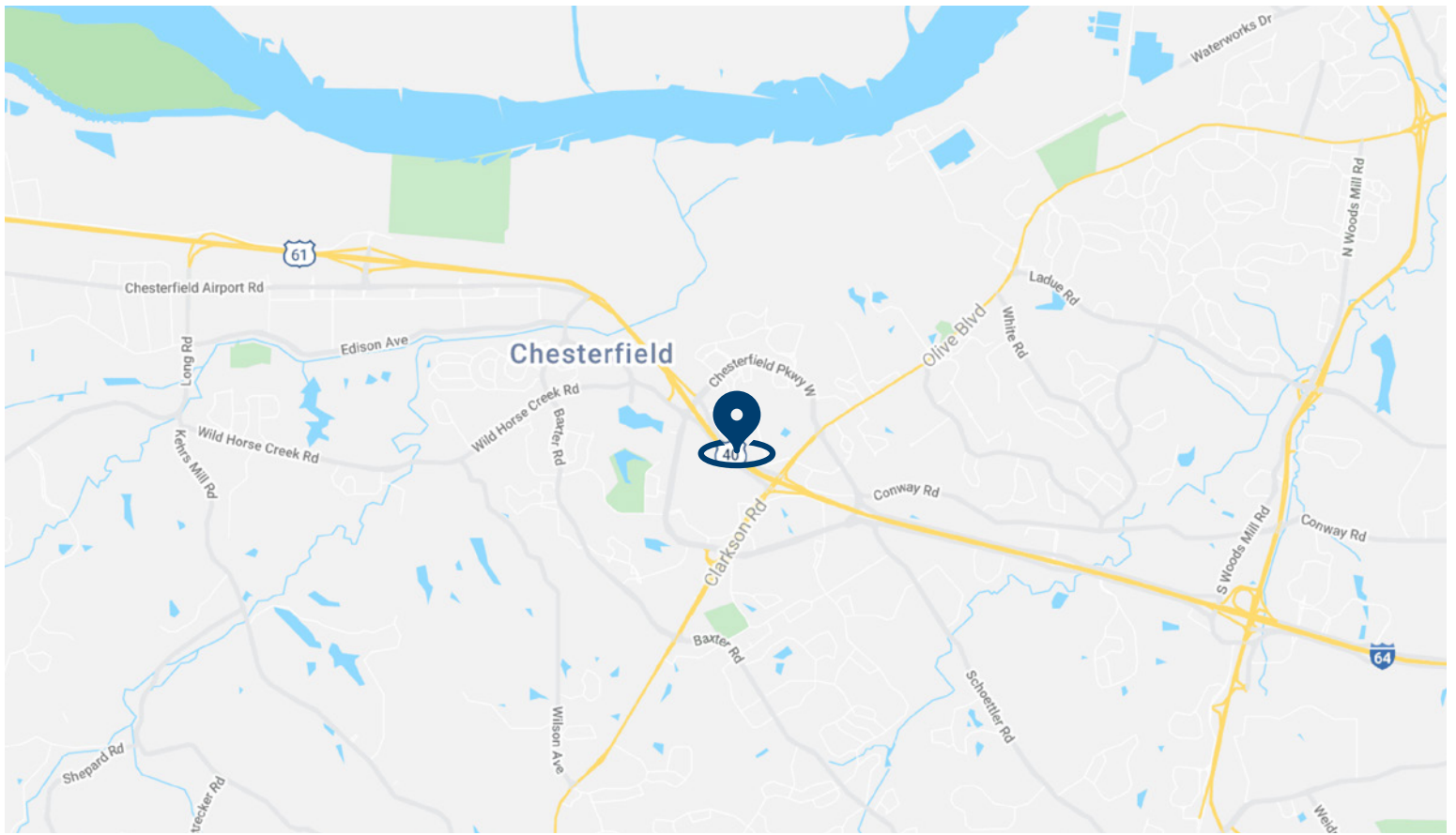


Suite 220 | 662 RSF



Suite 340 | 4,656 RSF





Tom Bajardi, CCIM SIOR
tbajardi@sansonegroup.com

Brandon Wappelhorst, CCIM, SIOR
bwappelhorst@sansonegroup.com

Nick Fiquette
nfiquette@sansonegroup.com

Kelly Spencer
kspencer@sansonegroup.com



314.727.6664

SANSONEGROUP.COM

120 S. Central Ave. | Ste. 500 | St. Louis, MO 63105

The information contained herein is not warranted, although it has been obtained from the owner of the property or from other sources that we deem reliable. It is subject to change without notice. Seller and broker make no representation as to the environmental condition of the property and recommend purchaser's independent investigation.