



1231 LINCOLN ST FOR LEASE | 3,500 ± SF Retail / Office Space

CONTACT:

J.P. SCURRY, CCIM

JP@croslandbarnesgroup.com

Office: 803.254.0350

Cell: 803.361.7364

SCOTTIE SMITH

Scottie@croslandbarnesgroup.com

Office: 803.254.0350

Cell: 864.230.7076

C | B | G

CROSLAND BARNES GROUP

6 Calendar Court | Suite 3

Columbia, SC 29204

croslandbarnes.com

FOR LEASE | 3,500 ± SF Retail / Office Space



1231 Lincoln St-Heart of the Vista

Located in the midst of Columbia’s entertainment district, the Vista, 1231 Lincoln Street is a historic mixed-use building in a popular location abound with restaurants, retailers, residential, office and nightlife. This venue is right across from the new Aloft Hotel and is less than a mile from the University of South Carolina. The property has a great deal of historic charm and offers prominent ground floor space on the corner of Lincoln and Lady Streets .

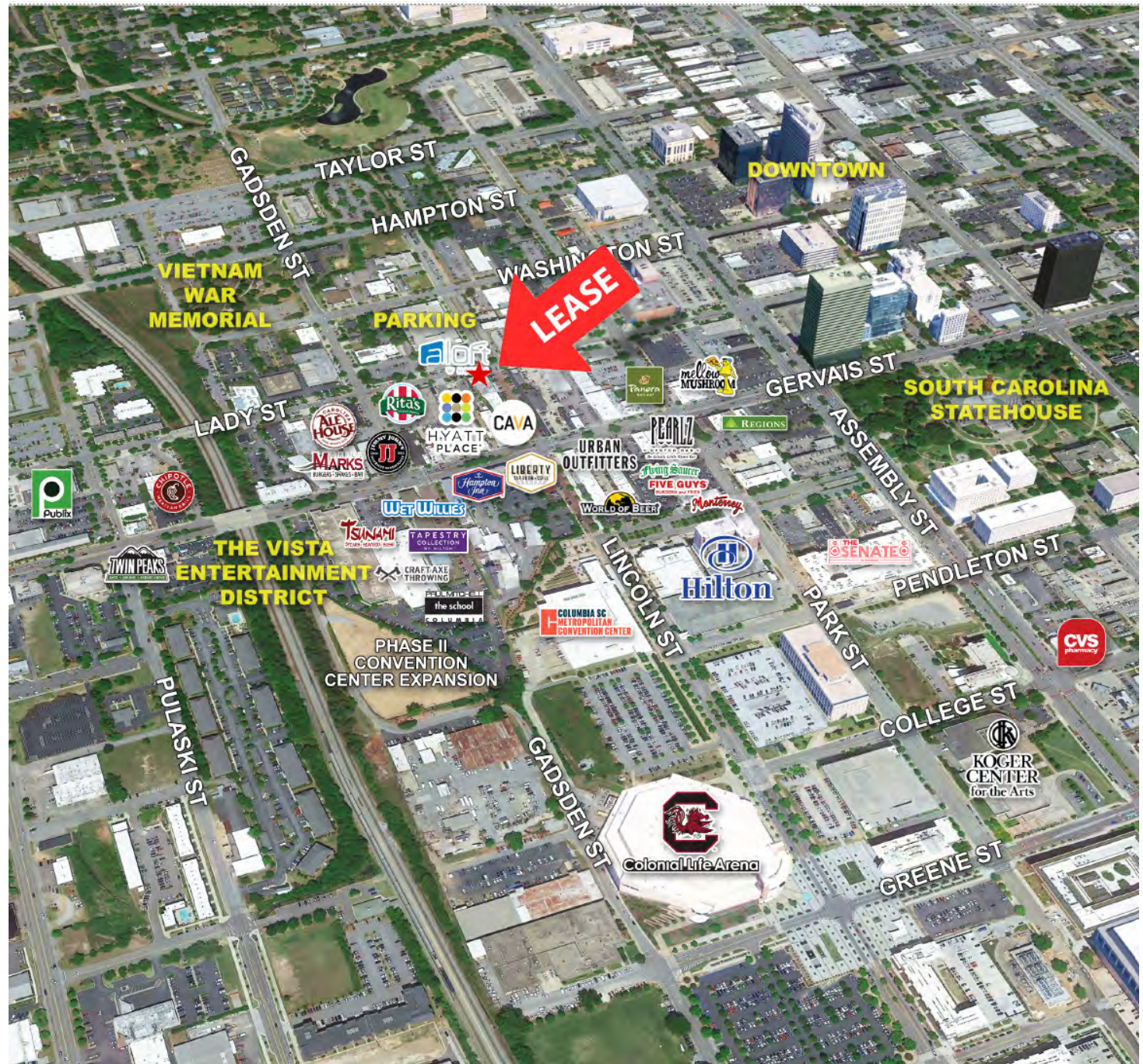
2024 DEMOGRAPHICS	1 Mile	3 Miles	5 Miles
Population	15,208	83,230	167,532
Growth 2020 - 2024	1.13%	0.99%	0.78%
Average Income	\$76,331	\$77,794	\$81,805
Median Age	22.2	28.8	33.0
Daytime Employees	43,168	100,168	145,858

1231 LINCOLN ST | VISTA

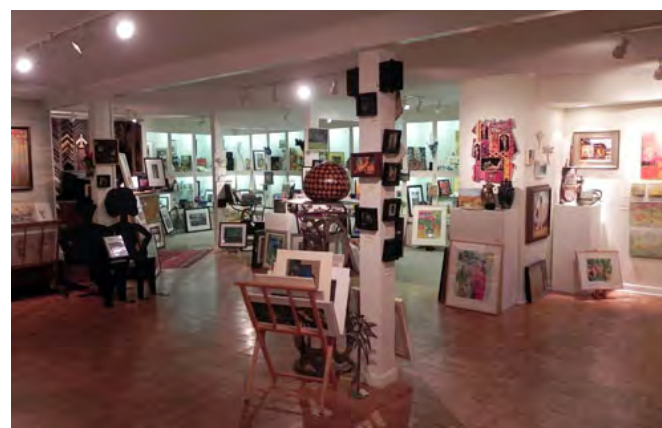
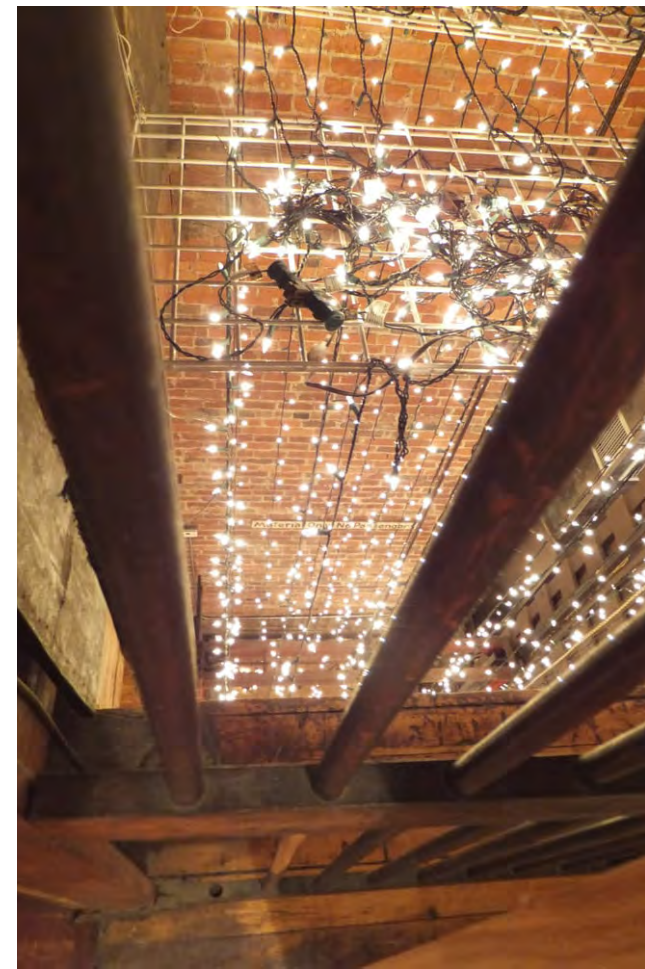
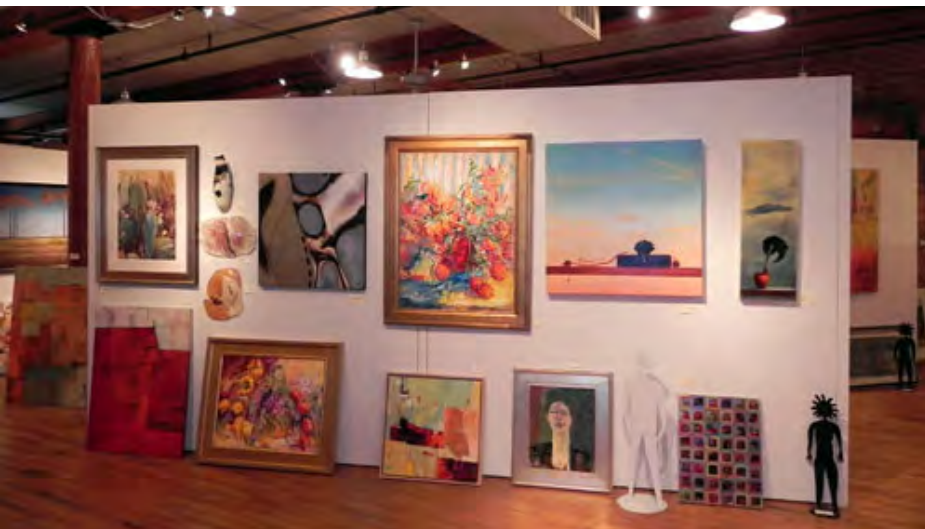
1231 Lincoln & The Vista:

1231 Lincoln is 2 stories of office / retail and residential space located in the heart of the Historic Congaree Vista. The Congaree Vista, located along the Gervais Street retail corridor, is a renovated textile mill and trainyard district transformed into a one-stop residential, entertainment and arts hub of antique and gallery stores, national chain clothing stores, outdoor outfitters, office buildings and hotels, many lined along brick streets and all surrounded by downtown eateries and historic landmarks.

- Building offers \pm 3,500 square feet of Retail / Office space
- Corner location with great parking
- Close proximity to the University of South Carolina and the Columbia CBD



1231 LINCOLN ST



1224 LINCOLN ST | CITY ART

C | B | G
CROSLAND BARNES GROUP