

AVAILABLE FOR SALE/LEASE

10608 WEST 163RD PLACE, ORLAND PARK, IL 60467



PROPERTY DESCRIPTION

2-story Flex Building Available for Sale or Lease

OFFERING SUMMARY

± **28,000 SF**

Building Size

1st Floor ± 17,000 SF
2nd Floor ± 11,000 SF
Basement ±10,000 SF

Land Size

± 3.22 Acres

Loading

2 Drive-in doors (10' x 12')

Heating

Gas Heat

Sprinklers

Wet

Sale Price

Subject to Offer

Lease Rate

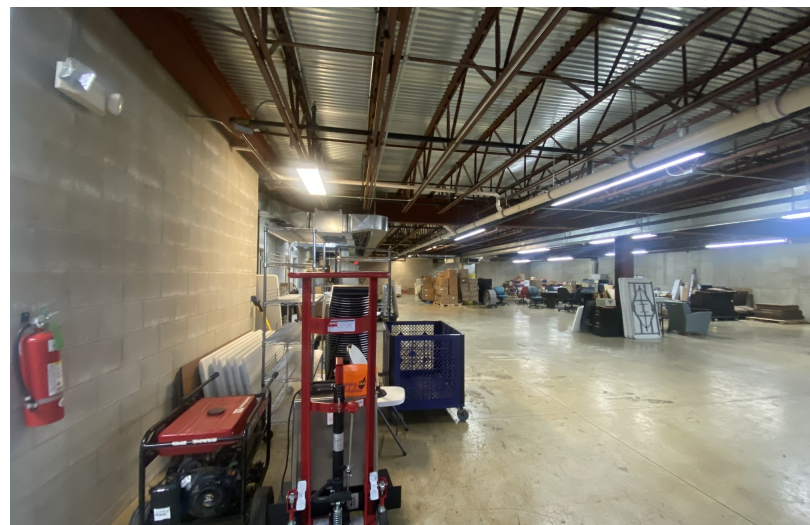
Subject to Offer

PROPERTY HIGHLIGHTS

- Lab or R&D, Freestanding Steel & Masonry Flex Building
- Easy access to I-355/I-80 and 159th Street
- Close proximity to Chicago Midway International Airport
- Potential Multi-Tenant Building with Separate Entrances Elevator
- Built Out as Former Test-Kitchen with 2 Commercial Kitchens, Ansol Hood Systems, Development Laboratory, Training and Food Panel Test Rooms
- Parking for ± 200 Cars
- Zoned - Manufacturing & Light Industrial

AVAILABLE FOR SALE/LEASE

10608 WEST 163RD PLACE, ORLAND PARK, IL 60467



LAURA PERLMAN | Associate | 773.714.2147 | lperlman@darwinpw.com



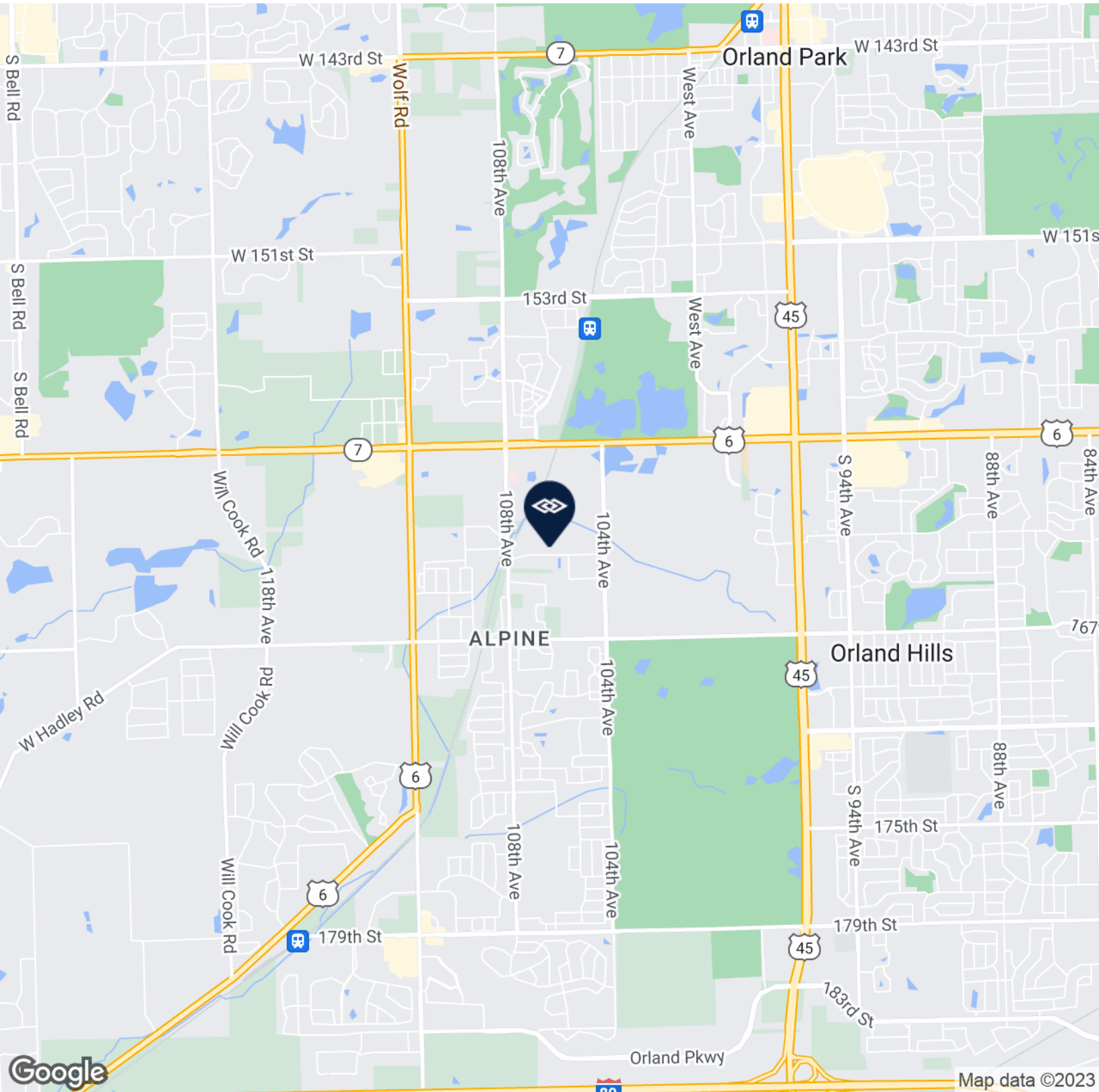
970 N Oaklawn, Suite 100 | Elmhurst, IL 60126 | Tel: 630.782.9520 | darwinpw.com
Submitted subject to error, change in status, or withdrawal without notice.

AVAILABLE FOR SALE/LEASE

10608 WEST 163RD PLACE, ORLAND PARK, IL 60467



R E A L T Y



LAURA PERLMAN | Associate | 773.714.2147 | lperlman@darwinpw.com



970 N Oaklawn, Suite 100 | Elmhurst, IL 60126 | Tel: 630.782.9520 | darwinpw.com
Submitted subject to error, change in status, or withdrawal without notice.



DARWINPW

R E A L T Y

CORFAC International