

OFFICE WAREHOUSE FOR LEASE

102 Tribble Dr. ♦ Madison, AL ♦ 35758 ♦ Madison County



BUILDING SIZE: 12,000 sf • SUITES AVAILABLE 3,300 SF & 6,700 SF • RATE: \$10.50/SF

Mark Dinan, MBA, CCIM

(o) 205-980-3434

(c) 205-243-3434

markdinan@bellsouth.net

MARK DINAN
Commercial & Investment Real Estate

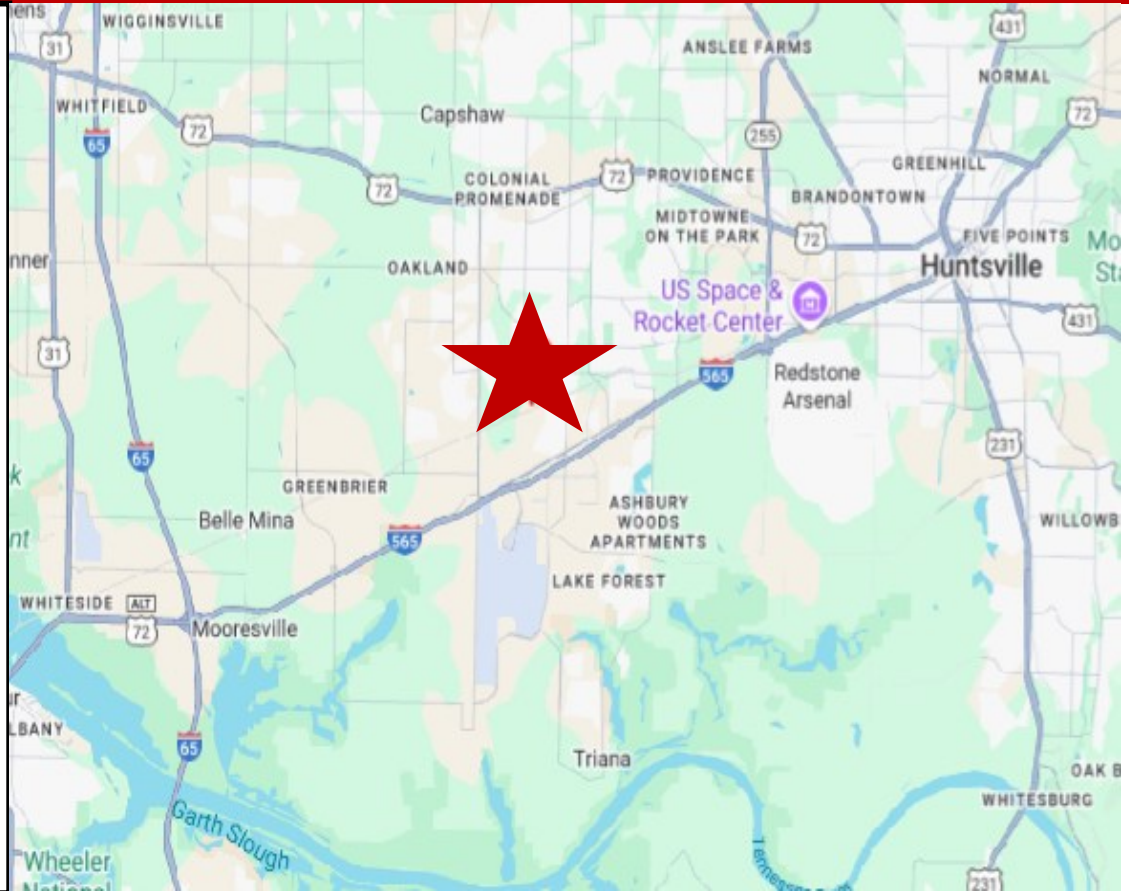


*All Information furnished regarding property sale, rental, or financing is from sources deemed reliable, but is not guaranteed.

LOCATION DETAILS

102 Tribble Dr. ♦ Madison, AL ♦ 35758 ♦ Madison County

- ♦ Excellent location just off I-565
- ♦ 12,000 SF Multi Tenant Bldg on 1.07 Acre Lot
- ♦ Full building renovation in 2020.
- ♦ Move in ready office warehouse is in like new condition and available now..
- ♦ Large fenced yard with double entrance access and abundant parking.
- ♦ Two adjoining suites available.
- ♦ Suite A is 6,700 SF
- ♦ Suite B is 3,300 SF
- ♦ Both suites feature attractive office warehouse space with drive-in doors and rear fenced yard.
- ♦ Zoned General Industrial.



Mark Dinan, MBA, CCIM

(c) 205-980-3434

(c) 205-243-3434

markdinan@bellsouth.net

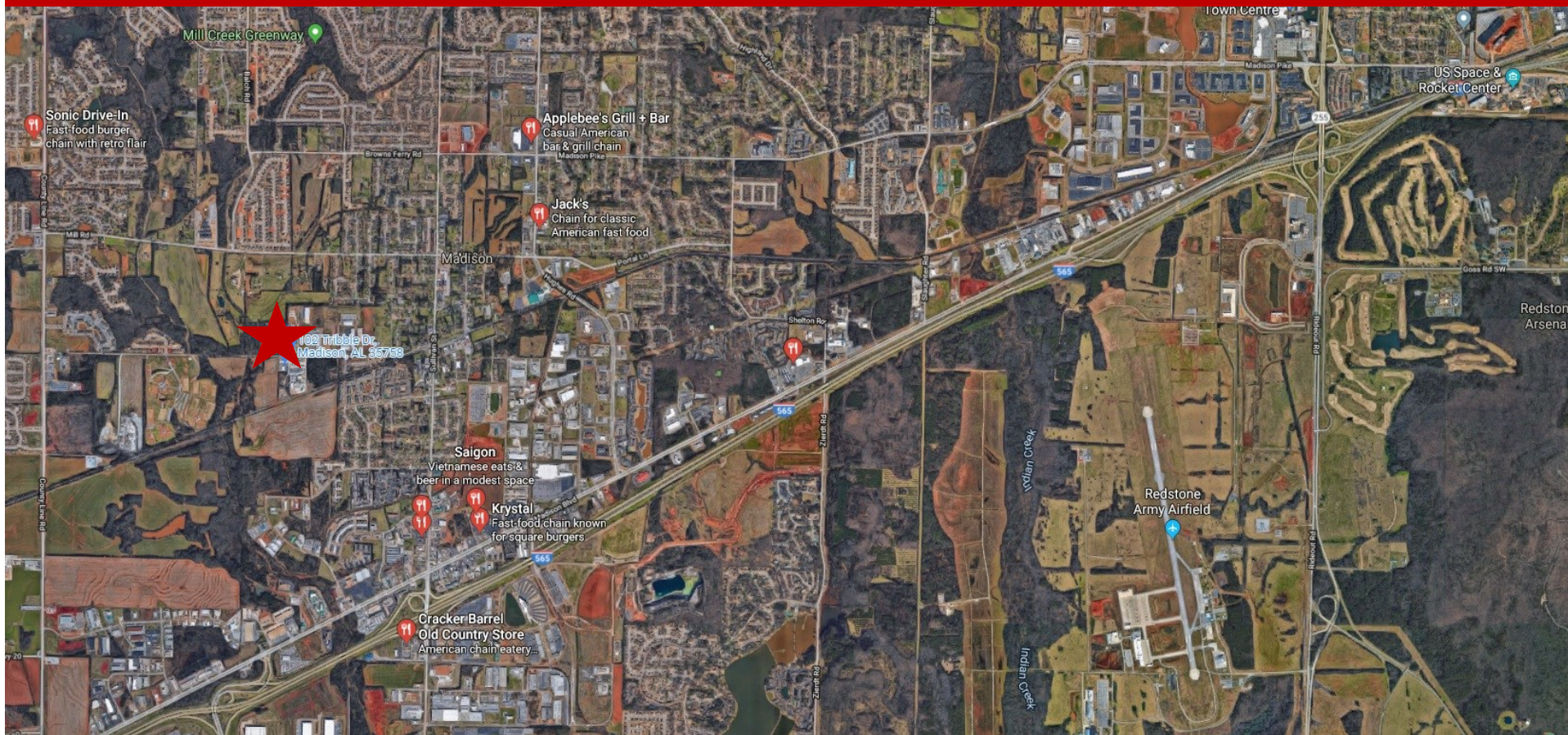
MARK DINAN
Commercial & Investment Real Estate



*All Information furnished regarding property sale, rental, or financing is from sources deemed reliable, but is not guaranteed.

AERIAL MAP

102 Tribble Dr. ♦ Madison, AL ♦ 35758 ♦ Madison County



Mark Dinan, MBA, CCIM

(c) 205-980-3434

(c) 205-243-3434

markdinan@bellsouth.net

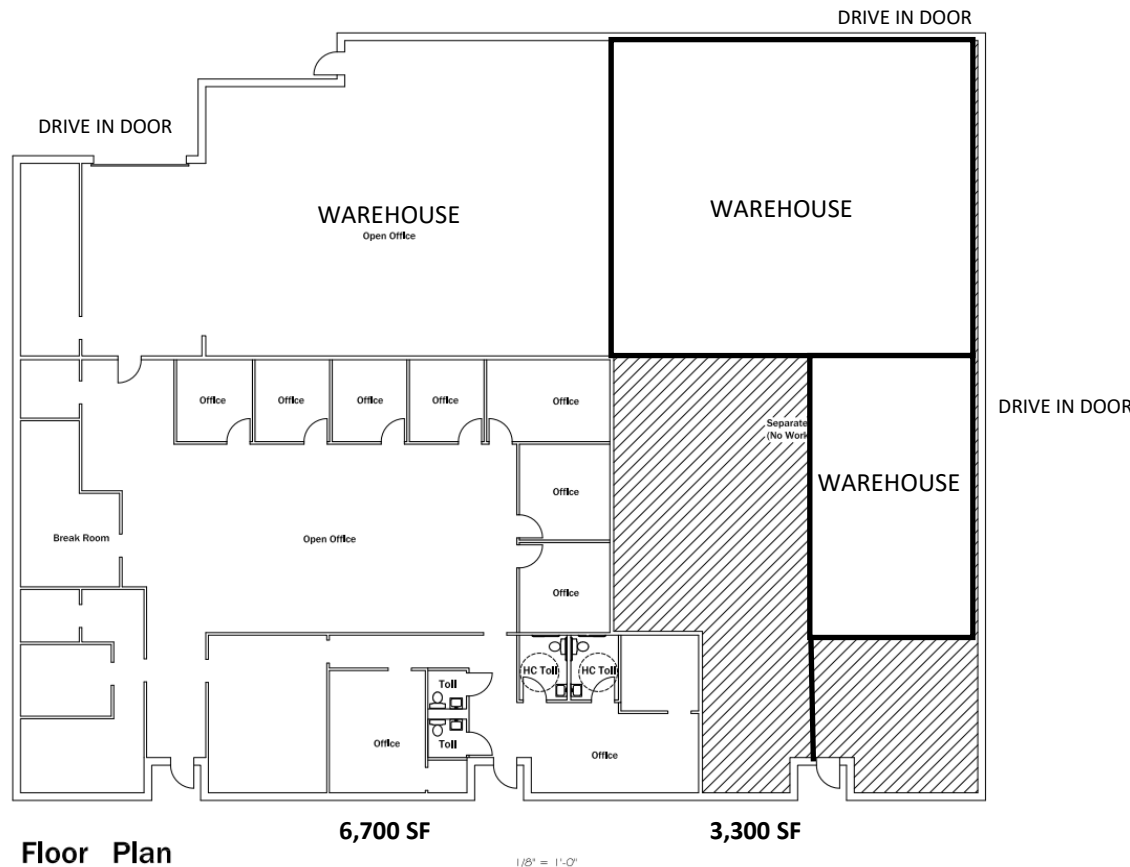
MARK DINAN
Commercial & Investment Real Estate



*All Information furnished regarding property sale, rental, or financing is from sources deemed reliable, but is not guaranteed.

FLOOR PLAN

102 Tribble Dr. ♦ Madison, AL ♦ 35758 ♦ Madison County



Mark Dinan, MBA, CCIM

(o) 205-980-3434

(c) 205-243-3434

markdinan@bellsouth.net

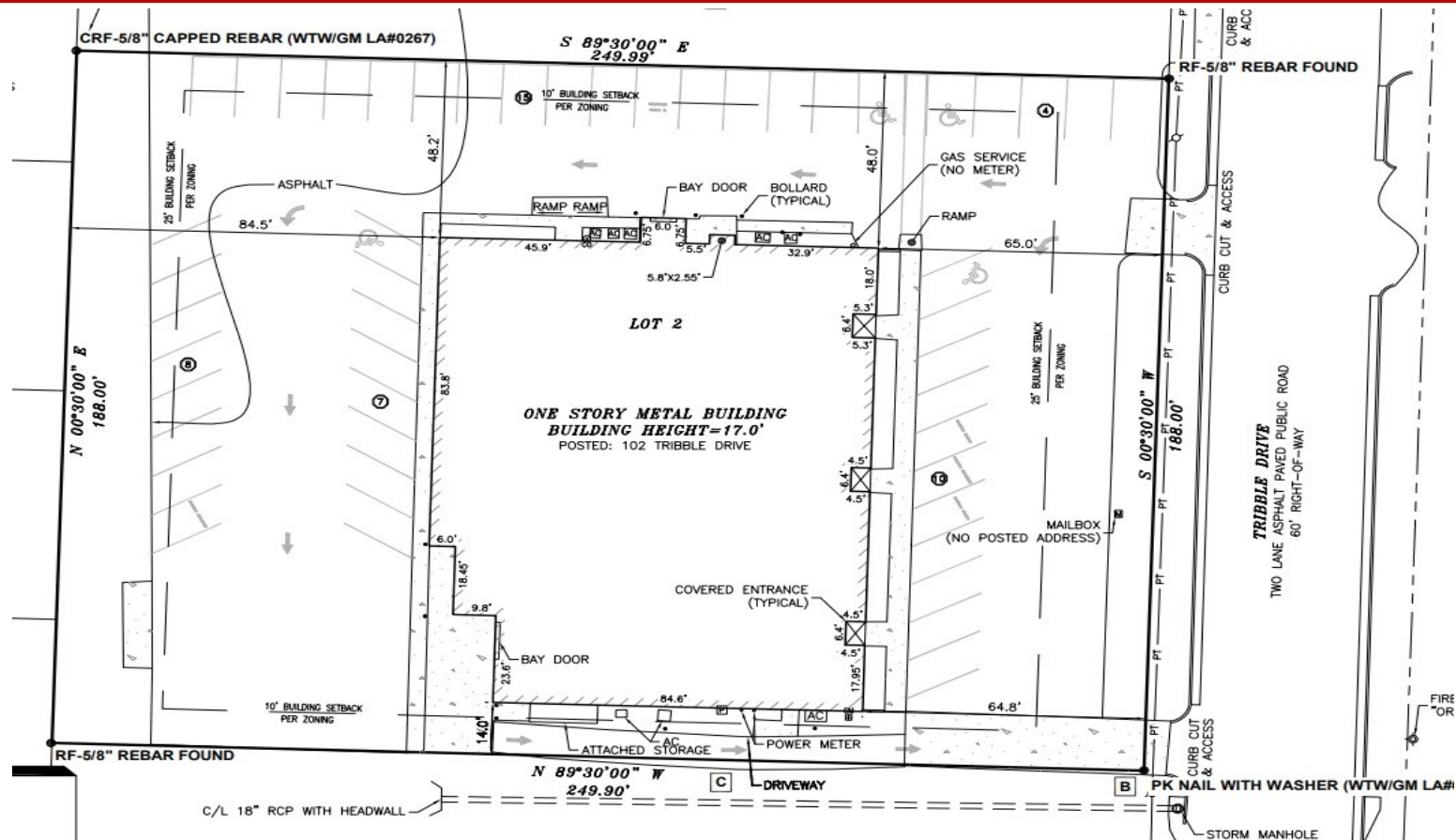
MARK DINAN
Commercial & Investment Real Estate



*All Information furnished regarding property sale, rental, or financing is from sources deemed reliable, but is not guaranteed.

SURVEY

102 Tribble Dr. ♦ Madison, AL ♦ 35758 ♦ Madison County



Mark Dinan, MBA, CCIM

(c) 205-980-3434

(c) 205-243-3434

markdinan@bellsouth.net

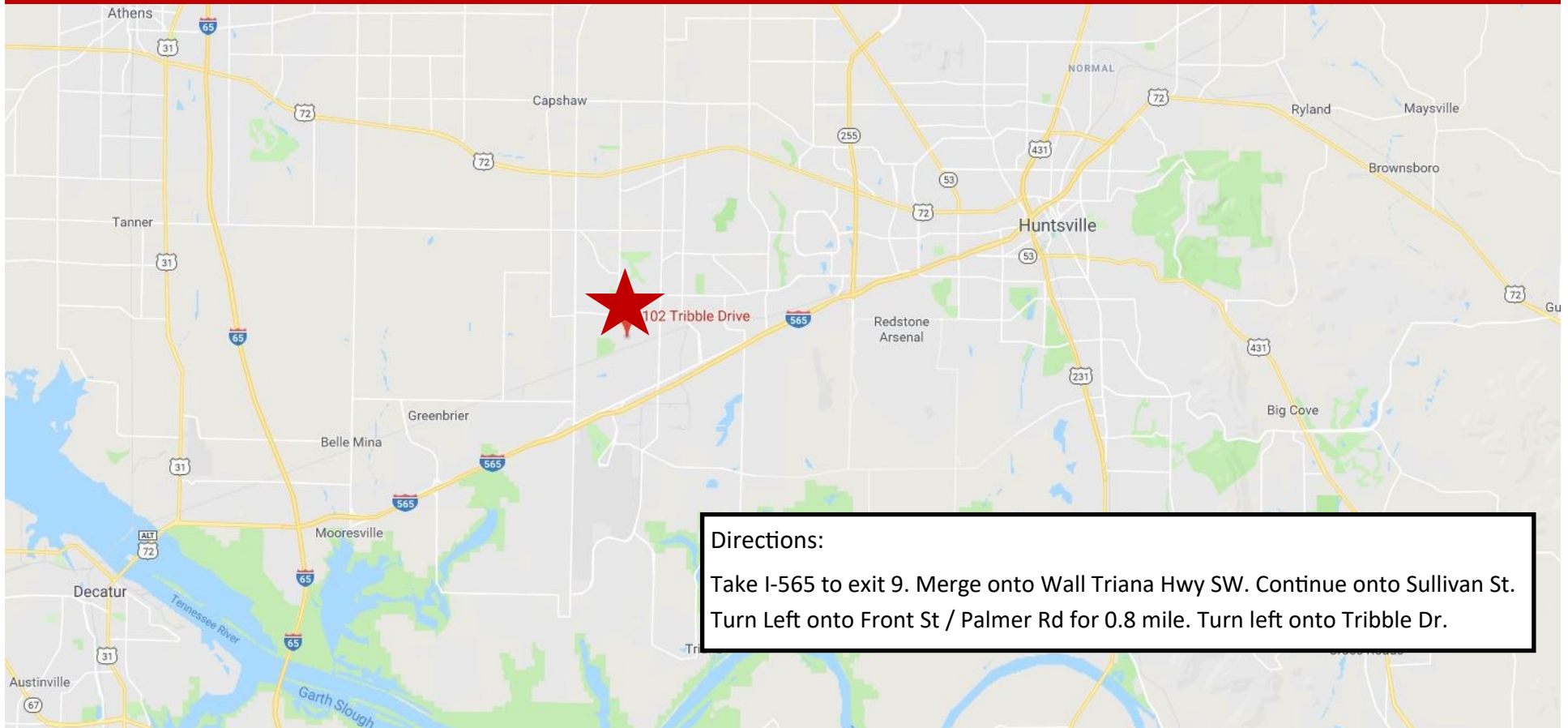
MARK DINAN
Commercial & Investment Real Estate



*All Information furnished regarding property sale, rental, or financing is from sources deemed reliable, but is not guaranteed.

LOCATION MAP

102 Tribble Dr. ♦ Madison, AL ♦ 35758 ♦ Madison County



Mark Dinan, MBA, CCIM

(o) 205-980-3434

(c) 205-243-3434

markdinan@bellsouth.net

MARK DINAN
Commercial & Investment Real Estate



*All Information furnished regarding property sale, rental, or financing is from sources deemed reliable, but is not guaranteed.