

44004 WOODWARD AVENUE
BLOOMFIELD HILLS, MICHIGAN

OFFICE FOR LEASE

1,272 - 4,591 Square Feet Available



**SIGNATURE
ASSOCIATES**
KNOW SIGNATURE | KNOW RESULTS

BLOOMFIELD BOULEVARD BUILDING



PROPERTY FEATURES

- 4,591 square feet available
 - Suite 107: 1,272 Sq. Ft. - \$12.95/sq. ft. G + E
 - Suite 201: 1,519 Sq. Ft. - \$14.95/sq. ft. G + E
 - Suite 303: 1,800 Sq. Ft. - \$14.95/sq. ft. G + E
- Move-in ready suites with furniture available
- Excellent value on Woodward Avenue in Bloomfield Hills
- On-site property management
- Close proximity to Trinity Health Oakland Hospital
- Recently renovated/updated



For more information, please contact:

DAN MORROW
(248) 799 3144
dmorrow@signatureassociates.com

DAVE MILLER
(248) 948 4183
dmiller@signatureassociates.com

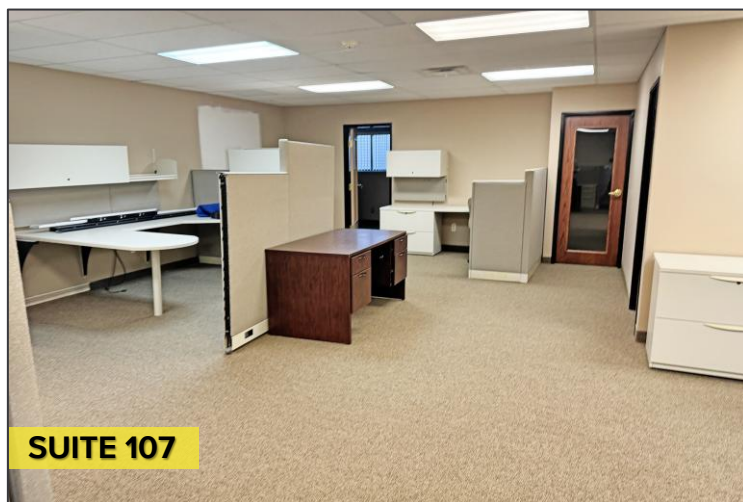
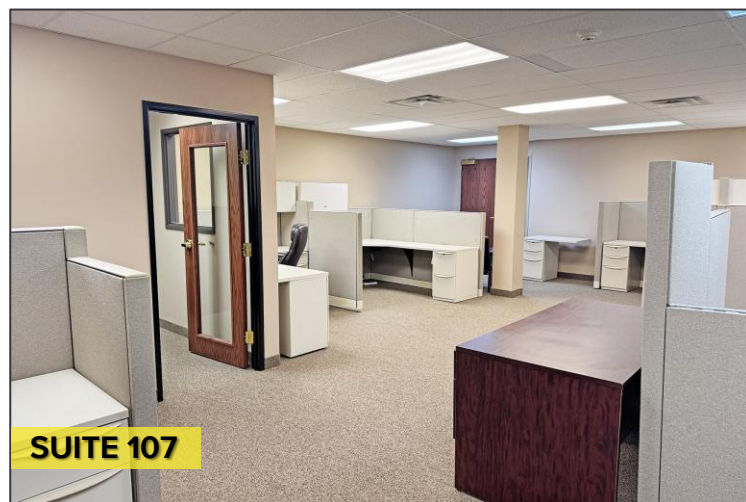
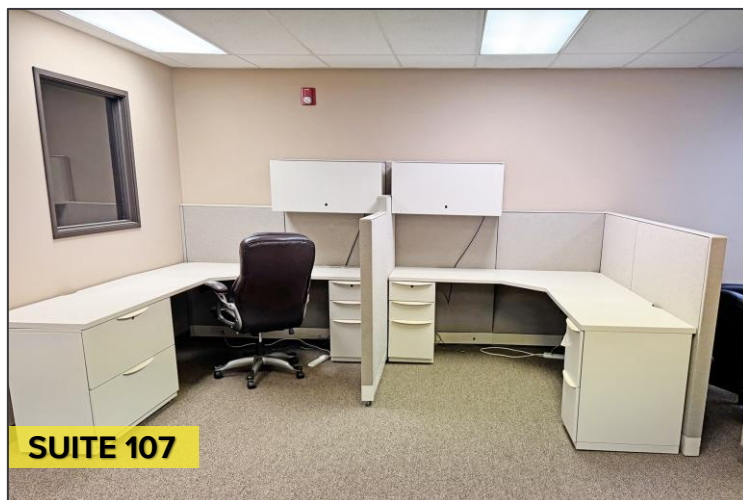
SIGNATURE ASSOCIATES
One Towne Square, Suite 1200
Southfield, MI 48076
www.signatureassociates.com

44004 Woodward Avenue – Bloomfield Hills, Michigan

Office For Lease

1,272 - 4,591
Square Feet
AVAILABLE

Interior Photos



For more information, please contact:

DAN MORROW
(248) 799 3144
dmorrow@signatureassociates.com

DAVE MILLER
(248) 948 4183
dmiller@signatureassociates.com

SIGNATURE ASSOCIATES
One Towne Square, Suite 1200
Southfield, MI 48076
www.signatureassociates.com

44004 Woodward Avenue – Bloomfield Hills, Michigan

Office For Lease

1,272 - 4,591
Square Feet
AVAILABLE

Aerial



For more information, please contact:

DAN MORROW
(248) 799 3144
dmorrow@signatureassociates.com

DAVE MILLER
(248) 948 4183
dmiller@signatureassociates.com

SIGNATURE ASSOCIATES
One Towne Square, Suite 1200
Southfield, MI 48076
www.signatureassociates.com

Information is subject to verification and no liability for errors or omissions is assumed. Price is subject to change and listing withdrawal.