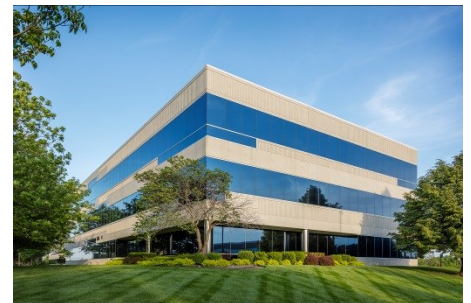
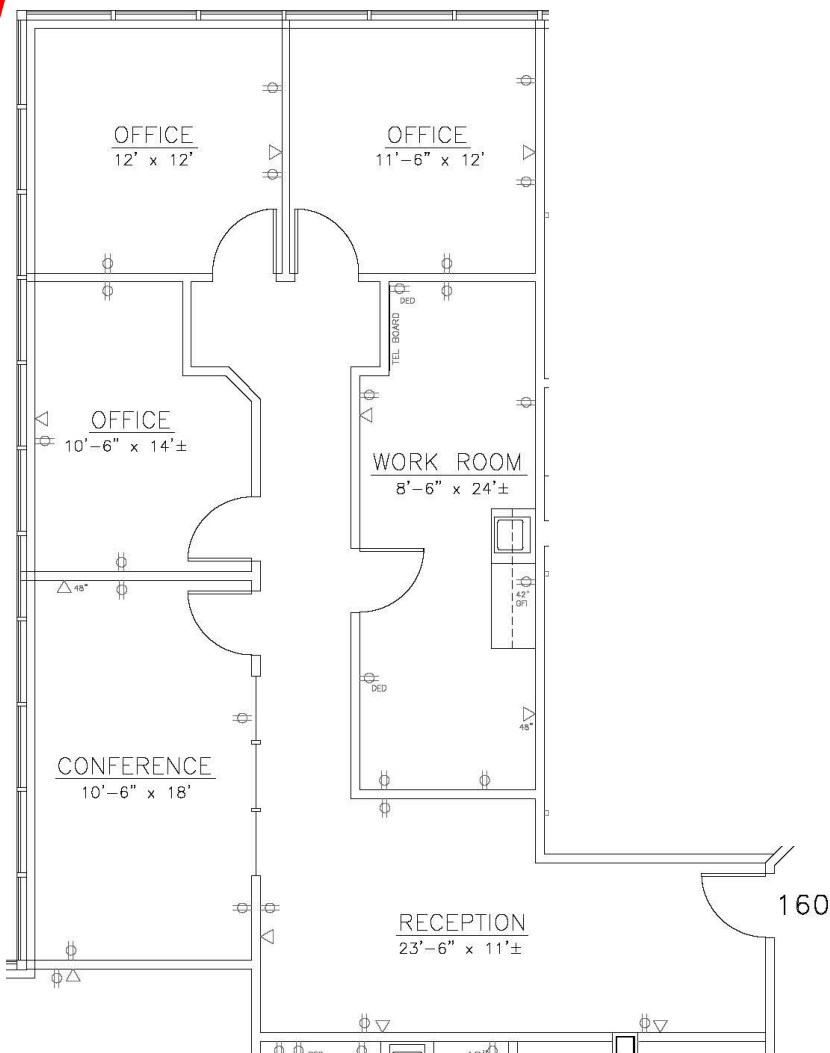




Building III—7201 W. 129th St.

**Available
2nd Quarter 2024
Terrific Small Suite
on 1st Floor
Move-In Ready
Easy Access to
Major Highways
Walk to Restaurants
and Shops**

1,364 RSF



- * On-site leasing, management & ownership
- * Cost-effective building designs
- * Professional floor plan development
- * Custom interior design services
- * General contracting by Southcreek
- * Flexible expansion options
- * Convenient parking
- * Excellent location
- * Beautiful park settings
- * Commitment to your needs

Elaine Sight
Kathy Woodward, SIOR
DDI COMMERCIAL, INC.
7200 West 132nd Street
Suite 300
Overland Park, KS 66213
P: 913.685.4100
F: 913.685.1232

Elaine@DDIRealty.com
KathyW@DDIRealty.com
DDICommercial@DDIRealty.com
www.SouthcreekOfficePark.com