

4000 Noakes Street

COMMERCE, CA 90023

±113,347 sq. ft.
AVAILABLE

7 total
DOCK DOORS

±44,399 SF sq. ft.
REFRIGERATED PRODUCTION

30'
CLEAR HEIGHT

±23,918 sq. ft.
FREEZER

±23,842 sq. ft.
OFFICE

Features

±113,347 sq. ft. cold storage -
food production plant with
±44,399 sq. ft. refrigerated
production and ±23,918 sq. ft.
freezer with refrigerated dock

Formerly USDA & safe quality
food - level 3 conforming

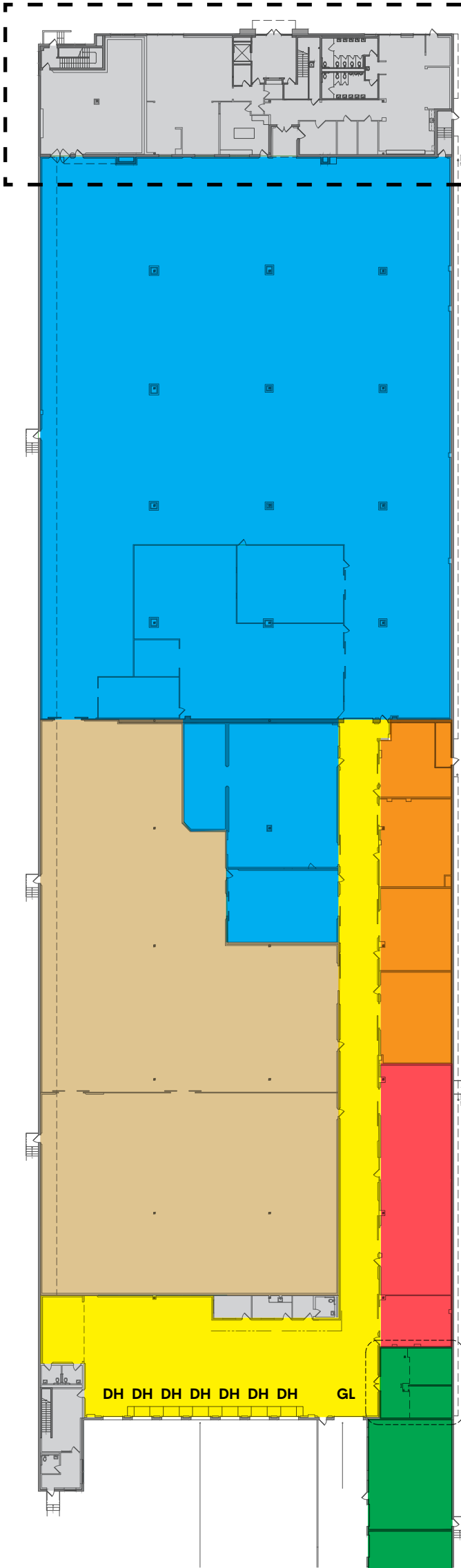
Separate fenced & secured
loading & parking areas

Direct access to:
Interstates 5 & 10
60, 101, 710 Freeways

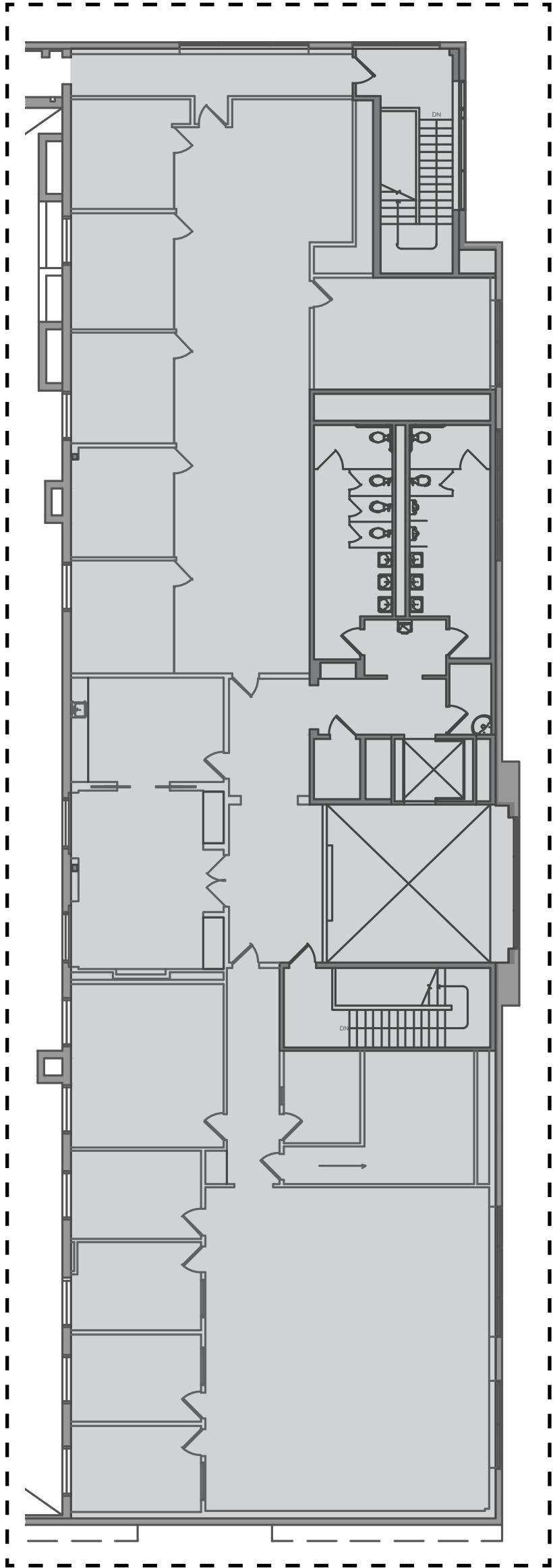


Building Specifications

Building Size	±113,347 sq. ft.
Available	±113,347 sq. ft.
Office Space	±23,842 sq. ft.
Clear Height	30'
Dock Doors	7 doors
Grade Level Doors	1 door via ramp
Yard	Fenced & secured with guard shack
Automobile Parking	±129 spaces
Sprinklers	.30 / 2000
Power	±6,400 amps
Refrigeration	Ammonia
Utilities	Three stage wastewater clarifier
	Floor drains
Construction	2007 concrete tilt-up (renovated 2023)
Floor	10" concrete



Ground Floor



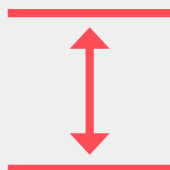
Mezzanine



±44,399 SF
Refrigerated
Production Area



±23,918 SF
Freezer Area



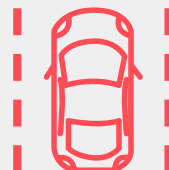
30'
Clear
Height



±6,400
Amps

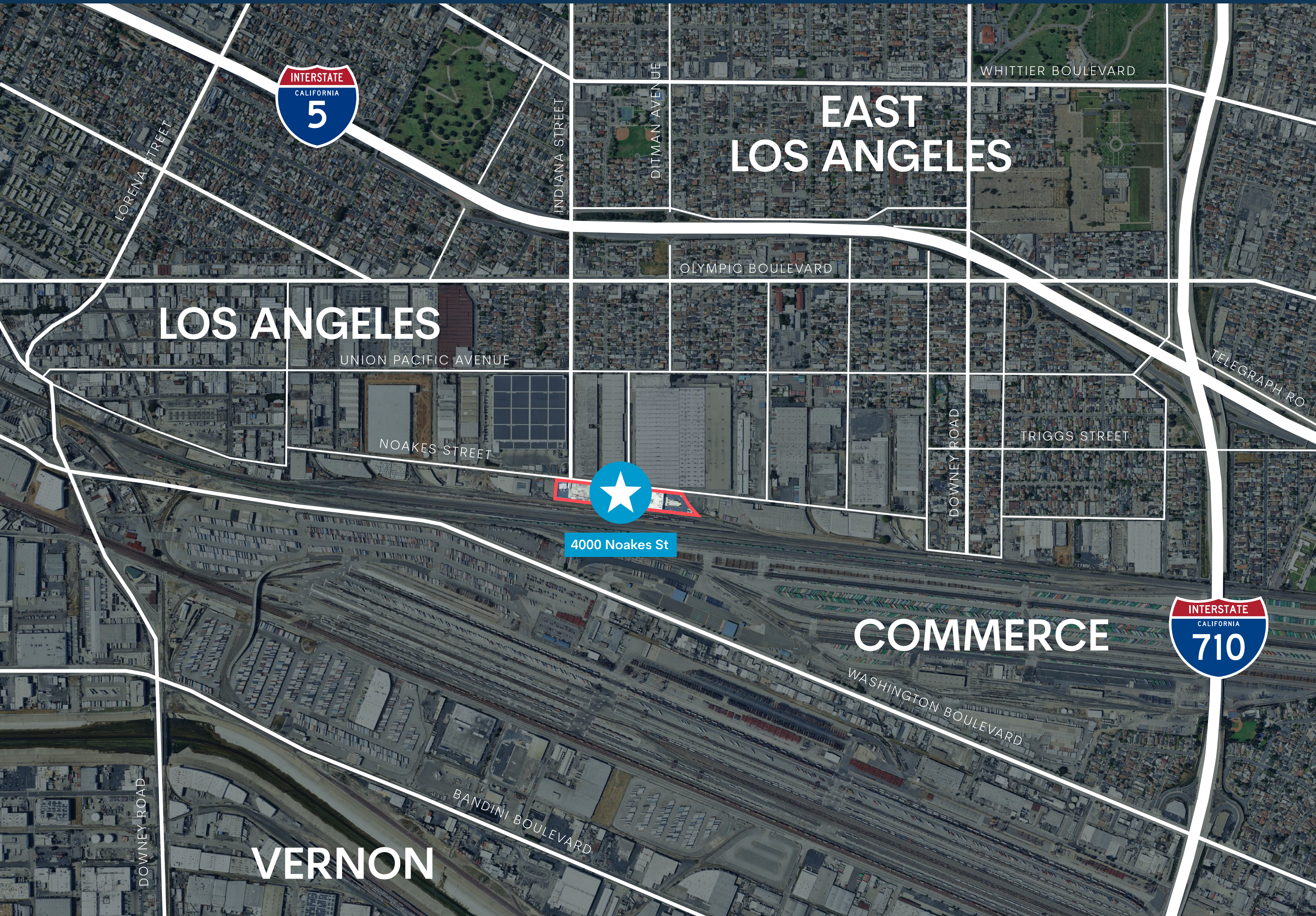
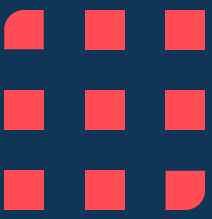


7
Dock Doors



±129
Automobile
Parking





EAST
LOS ANGELES

LOS ANGELES



4000 Noakes St

COMMERCE



VERNON



Area Map & Key Distances

Brookfield
Properties



Key Distances

Interstate 5	0.6 miles
60 Freeway	1.3 miles
710 Freeway	1.5 miles
101 Freeway	2.5 miles
Interstate 10	2.5 miles
110 Freeway	5.5 miles
Downtown Los Angeles	5.0 miles
Los Angeles Int'l Airport	21 miles
Port of Long Beach	21 miles
Port of Los Angeles	23 miles
Ontario Int'l Airport	38 miles





4000 Noakes Street

COMMERCE, CA 90023



Leasing Contacts

Jeff Sanita
310-491-2003
jeff.sanita@nmrk.com
CA RE Lic. #01242202

John McMillan
310-491-2048
john.mcmillan@nmrk.com
CA RE Lic. #01103292

Corporate License #01355491

The distributor of this communication is performing acts for which a real estate license is required. The information contained herein has been obtained from sources deemed reliable but has not been verified and no guarantee, warranty or representation, either express or implied, is made with respect to such information. Terms of sale or lease and availability are subject to change or withdrawal without notice.

NEWMARK

Joey Farney
310-491-2007
joey.farney@nmrk.com
CA RE Lic. #02218932

Scott Delphey
Food Properties Group
626-590-0490
scott.delphey@foodpropertiesgroup.com
CA RE Lic. #01488628



Brookfield Properties

Joonas Partanen
310-765-3232
joonas.partanen@brookfieldproperties.com
brookfieldproperties.com/logistics

