



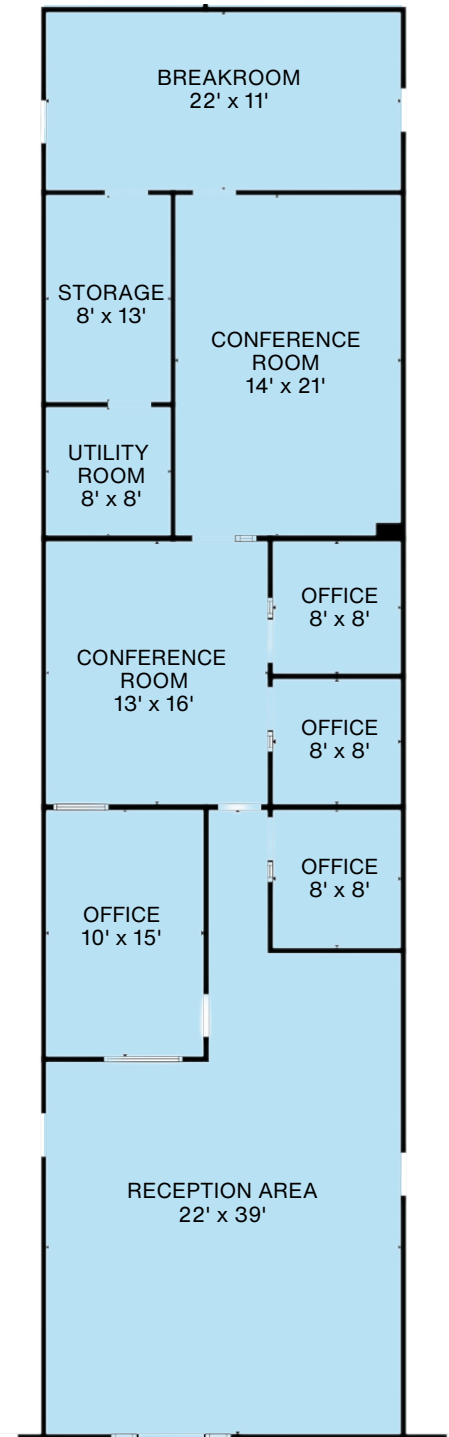
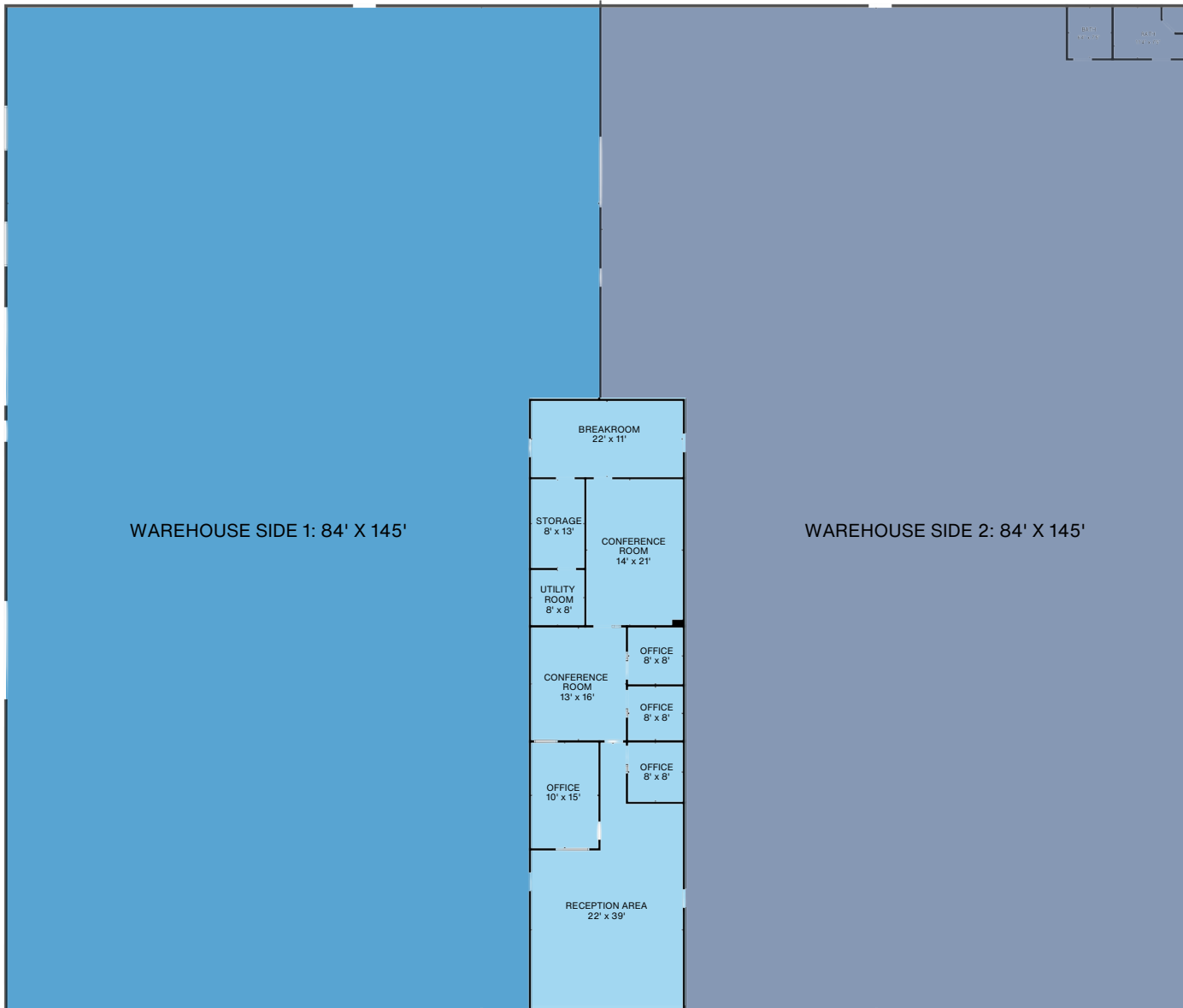
4811 CURTIS ROAD, DODGEVILLE, WI

PROPERTY DETAILS

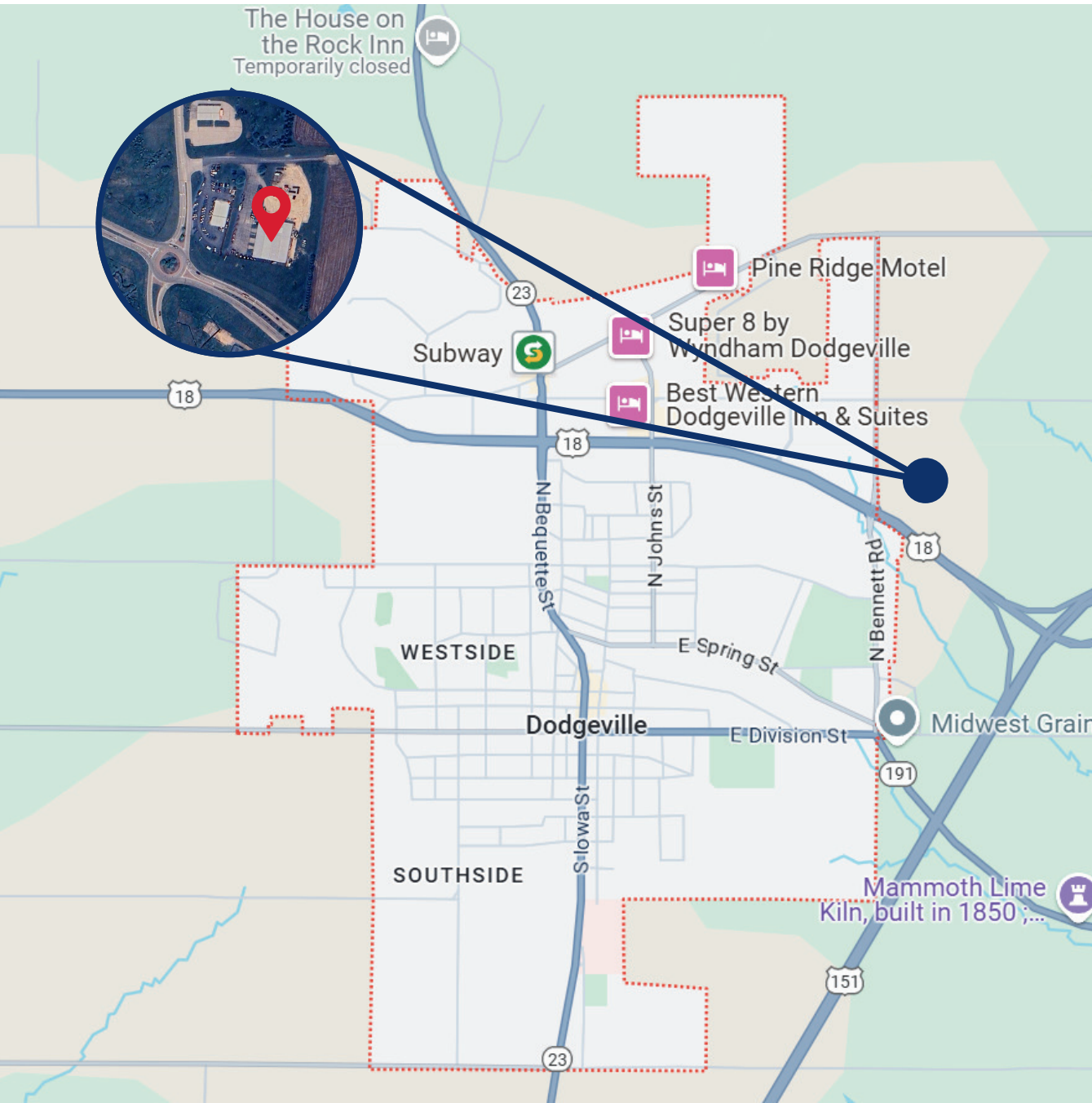
TOTAL AVAILABLE SF:	26,250 SF
CLEAR HEIGHT:	13' - 15'
YEAR BUILT:	1995
POWER:	3 PHASE 208/120 VOLT MAIN LUG 250 AMPS
ZONING:	B-3 HEAVY BUSINESS DISTRICT
FLOORING:	6" CEMENT SLAB, SINGLE POUR
WAREHOUSE SIDE 1:	12,200 SF MANUAL LOADING DOCK 9'H x 8'W WITH LEVELER 3 DRIVE IN BAYS <ul style="list-style-type: none">• 14'H x 20'W• 12'H x 12'W• 14'H x 14'W WASH BAY
WAREHOUSE SIDE 2:	12,200 SF AUTOMATIC LOADING DOCK 9'H x 8'W WITH LEVELER 1 DRIVE IN BAY <ul style="list-style-type: none">• 14'H x 14'W RESTROOMS
SERVICE DOORS:	6 SERVICE DOORS
OFFICE SPACE:	1,855 SF
LOT SIZE:	4.39 ACRES



FLOOR PLANS



LOCATION



HWY 18/151
INTERSECTION

UNDER 1 MILE

MADISON, WI

46 MILES

DUBUQUE, IA

50 MILES

DANE COUNTY
REGIONAL AIRPORT

57 MILES



PROPERTY FEATURES

- 26,250 Square Feet
- Office Space with Conference Rooms, Breakroom, and Offices
- Immediate Intersection Access to HWY 18/151
- Large Graveled Lot for Parking or Storage
- Two Loading Docks
- Four Overhead Doors
- Three Phase Electric Power
- Wash Bay with Power Washer
- Two Septic Fields - One for Sewer, One for Wash Bay
- LED Lighting Throughout
- New Well and Water Filtration System in 2022

FOR MORE INFORMATION CONTACT:



RE/MAX PREFERRED

Julia Oellerich
Real Estate Agent
608-574-7092
julia@trueactionrealty.com
juliaoellerich.remax.net

