

# VIA LINDA

## CORPORATE CENTER



107,634 SF Class A Office Building For Lease

9060 E VÍA LINDA E //, SCOTTSDALE, AZ 85258



# ELEVATE

YOUR WORKSPACE



107,634 SF



Two-Story, Class A Office Building



Monument Signage Options



Building Conference Facility



Renovated in 2018



Serene Courtyard with Water Feature



Covered, Reserved Parking Available



Balcony Access in Certain Suites



4.0:1,000 Parking



**VIA LINDA**  
CORPORATE CENTER

- ◀ Adjacent to the Loop 101 Pima Freeway with direct access to the Northwest and Southeast Valley
- ◀ Skilled labor force and high-income area
- ◀ 15 minutes to Scottsdale Airpark and 20 minutes to Sky Harbor International Airport
- ◀ 13 minute drive to TPC Scottsdale, Scottsdale Quarter, and Kierland Commons dining, shopping, and night life
- ◀ Less than 10 minutes from Talking Stick Resort and The Pavilions at Talking Stick
- ◀ 185 amenities within 1 mile

**NORTH ON 101**  
 Kierland Commons  
 Scottsdale Quarter  
 TPC Scottsdale

**SCOTTSDALE FIEST SHOPPING CENTER**

Barnes & Noble	IHOP
Canton Dragon	Jimmy John's
Chase Bank	Marshalls
DSW Shoe Warehouse	NakedQ BBQ
Dunkin Donuts	OfficeMax
Einstein Bros Bagels	Popeyes Louisiana Kitchen
Flooring America	Portillo's Hot Dogs
Flower Child	Schlotzsky's
Fry's Food & Drug Center	Taco Bell
HomeGoods	Whataburger and more...

**FRY'S MARKETPLACE PLAZA**

Tavern Grille Scottsdale  
 Thai on Demand  
 Yo Pauly's New York Pizza  
 Andreoli Italian Grocer  
 Red House  
 World of Sourdough  
 Pizza Murphy's  
 First Bank  
 Fry's  
 Starbucks  
 The Coffee Bean & Tea Leaf

**VIA LINDA CORPORATE CENTER**



N 90TH STREET

E MOUNTAINVIEW RD

LOOP 101

LOOP 101



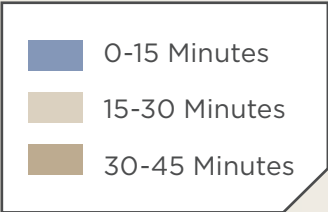
- 6
- 5
- 3
- 1
- 4
- 9
- 7
- 8
- 10
- 2

- |   |    |
|---|----|
| 1 | 6  |
| 2 | 7  |
| 3 | 8  |
| 4 | 9  |
| 5 | 10 |



# AMENITIES

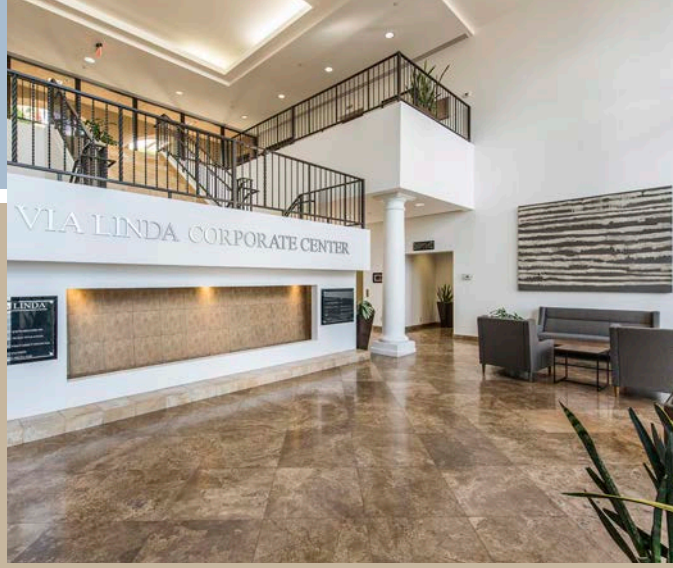
## NEARBY



# DRIVE TIMES

TO VIA LINDA

# SCOTTSDALE STATS



#1

**CITY IN THE U.S.  
TO LIVE AN  
ACTIVE LIFESTYLE**

— WALLETHUB

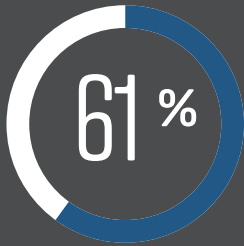
#7

**SAFEST CITY  
IN THE U.S.**

— LAW STREET MEDIA



**25 MINUTES  
FROM  
SKY HARBOR  
INTERNATIONAL  
AIRPORT**



**61%  
OF THE  
POPULATION IN  
SCOTTSDALE  
HAS A  
BACHELOR'S  
DEGREE  
OR HIGHER**

— ESRI



**152,721 POPULATION  
WITHIN 5 MILES**

— ESRI

TOP  
**25**

**CITY IN THE U.S.  
FOR ARTS  
DESTINATIONS**

— DATAFOX RANKING

TOP  
**10**

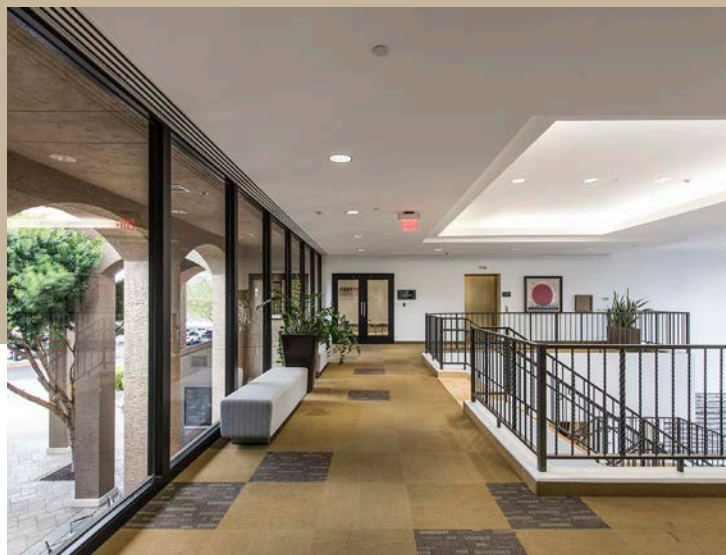
**CITY TO  
LAUNCH  
A STARTUP**

— DATAFOX RANKING



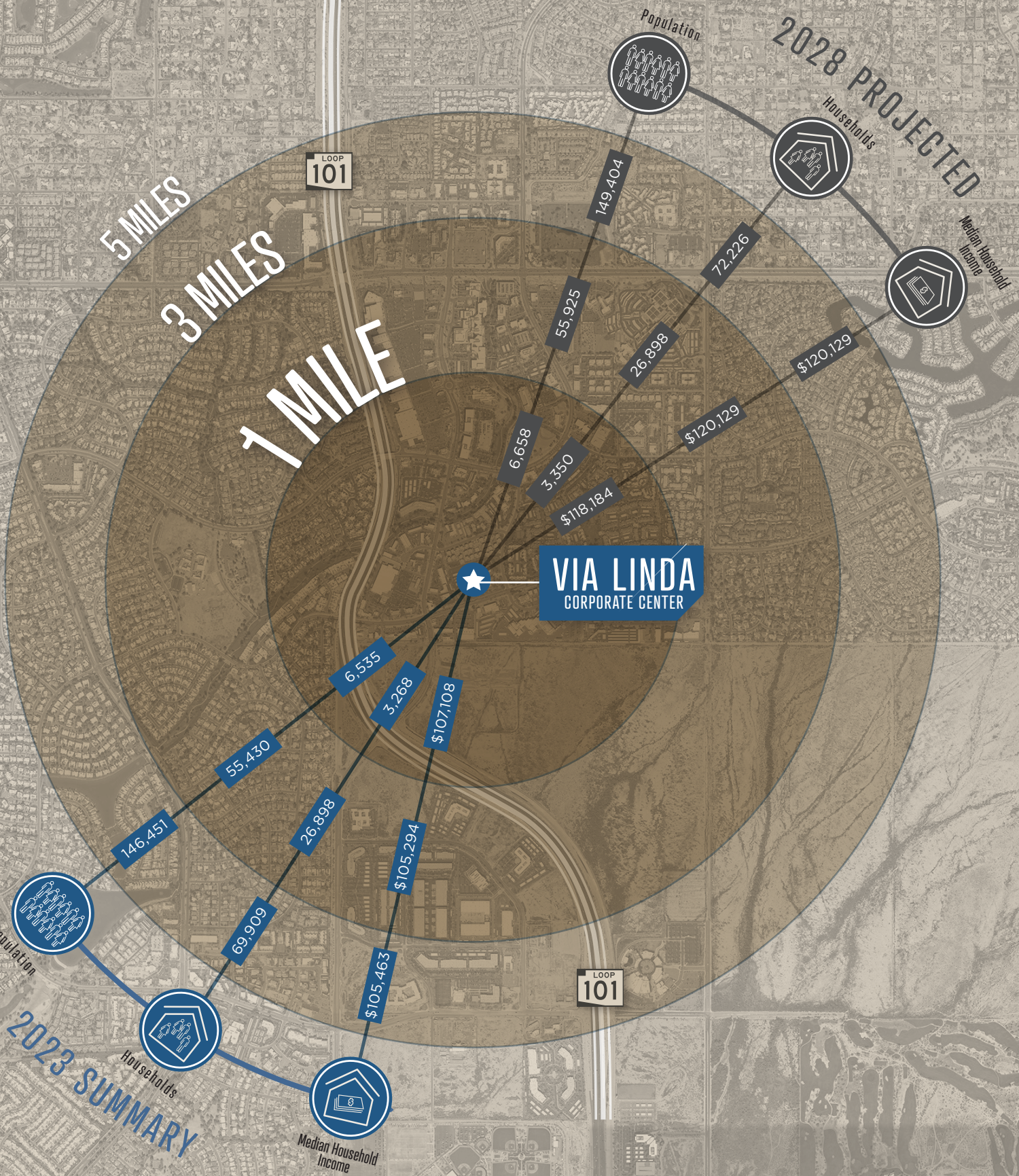
**BEST CITY IN THE  
U.S. TO GET A JOB**

— WALLETHUB



# DEMOGRAPHICS

FOR VIA LINDA



# VIA LINDA CORPORATE CENTER

Greg McMillan

Director

+1 602 229 5922

greg.mcmillan@cushwake.com

Scott Boardman

Executive Managing Director

+1 602 224 4446

scott.boardman@cushwake.com

Paige Blanzly

Associate

+1 630 200 5506

paige.blanzly@cushwake.com

