









**LEASE OPTIONS FROM
200-3500 SQFT**

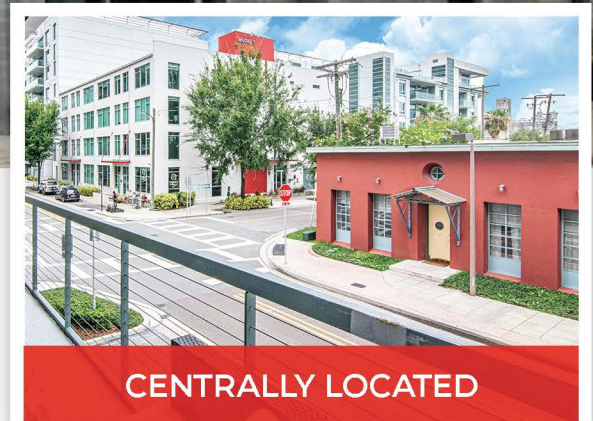
Entrepreneurial Small Block **FOR LEASE**

A modern designed space that offers a creative and inspiring work environment in the thriving and sought after professional and social community of the Channel District.

OUR FEATURES

-  Class A Office Space
-  Open Kitchen
-  Conference Room
-  Marketing Services
-  High-Speed Wifi
-  Free Printing

**MODERN CLASS A OFFICE
SPACE & GROUND FLOOR
RETAIL SPACE FOR LEASE**



CENTRALLY LOCATED



DEDICATED DESKS

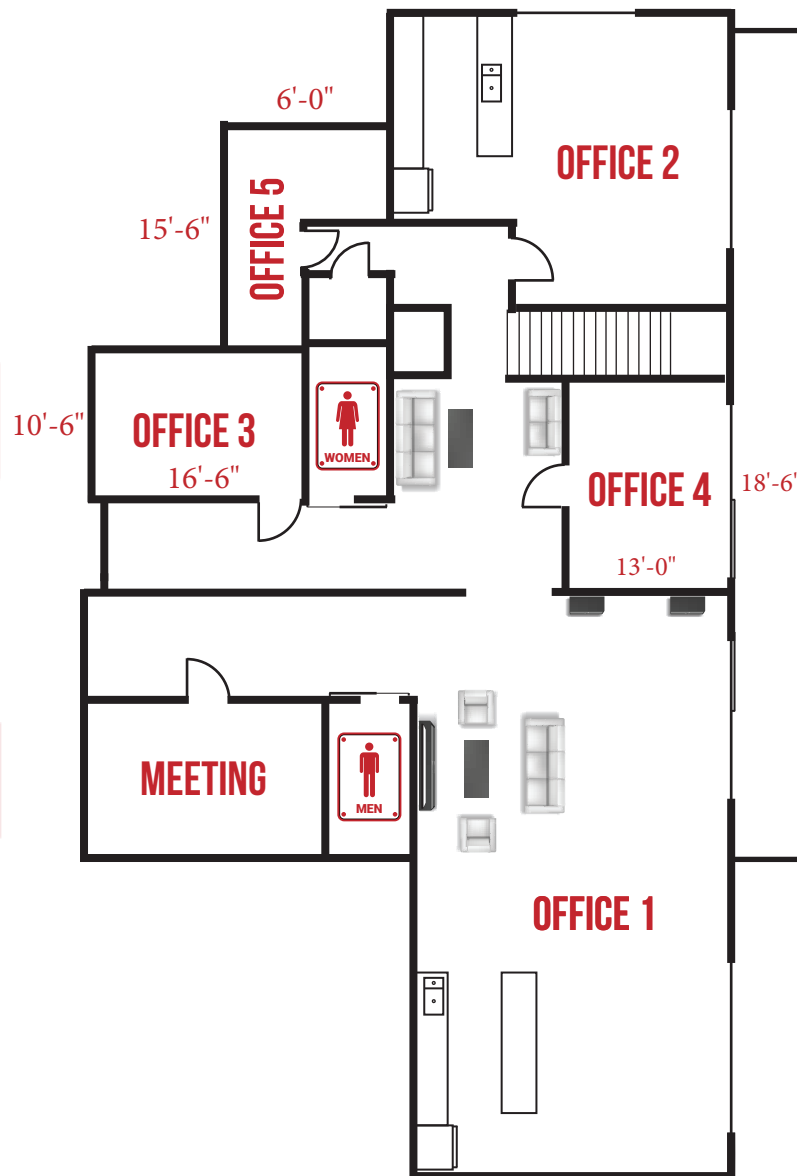


MULTIPLE LEASE OPTIONS

Office 5 - +/- 200
SF private
office, private
discussion area,
build it modern
murphy bed and
closet

Office 3 - +/- 500
SF up to 3-4
person office

Meeting - +/- 300
SF Conference
Room



Office 2 - +/-
1200 SF up to 8
people with
modern co work
office space
desks, bar
seating, leather
couch and
chairs gathering
space

Office 4 - +/- 300
SF up to 3
person office

Office 1 - +/-1400
SF up to 7-8
person office or
shared / private
standing desks
with dual
monitors, bar
seating, leather
couch

1st Floor Office -
+/- 500 SF with
private
restroom, open
floor plan, also
available for
ground floor
retail

