

EXCELLENT INDUSTRIAL ZONED PROPERTY

Available for Lease / Build-to-Suit

KENNEDY WILSON
BROKERAGE

4887, 4911 & 4933 Mountain Lakes Blvd, Redding



±5.15 acres Industrial Zoned Land
(Three parcels)

Mountain Lakes Boulevard

Adam Elomari
Associate
707.580.8782
AElomari@kennedywilson.com
DRE #02112895

Kennedy Wilson Brokerage | 1860 Howe Avenue, Suite 400, Sacramento, CA 98525

Kennedy-Wilson Properties, Ltd. (Responsible Broker Identity, DRE #00659610) makes no warranty or representation as to the accuracy of the information contained herein. Terms of sale or lease and availability of the property are subject to change or withdrawal without notice.

EXCELLENT INDUSTRIAL ZONED PROPERTY

Available for Lease / Build-to-Suit

KENNEDY WILSON

BROKERAGE

4887, 4911 & 4933 Mountain Lakes Blvd, Redding

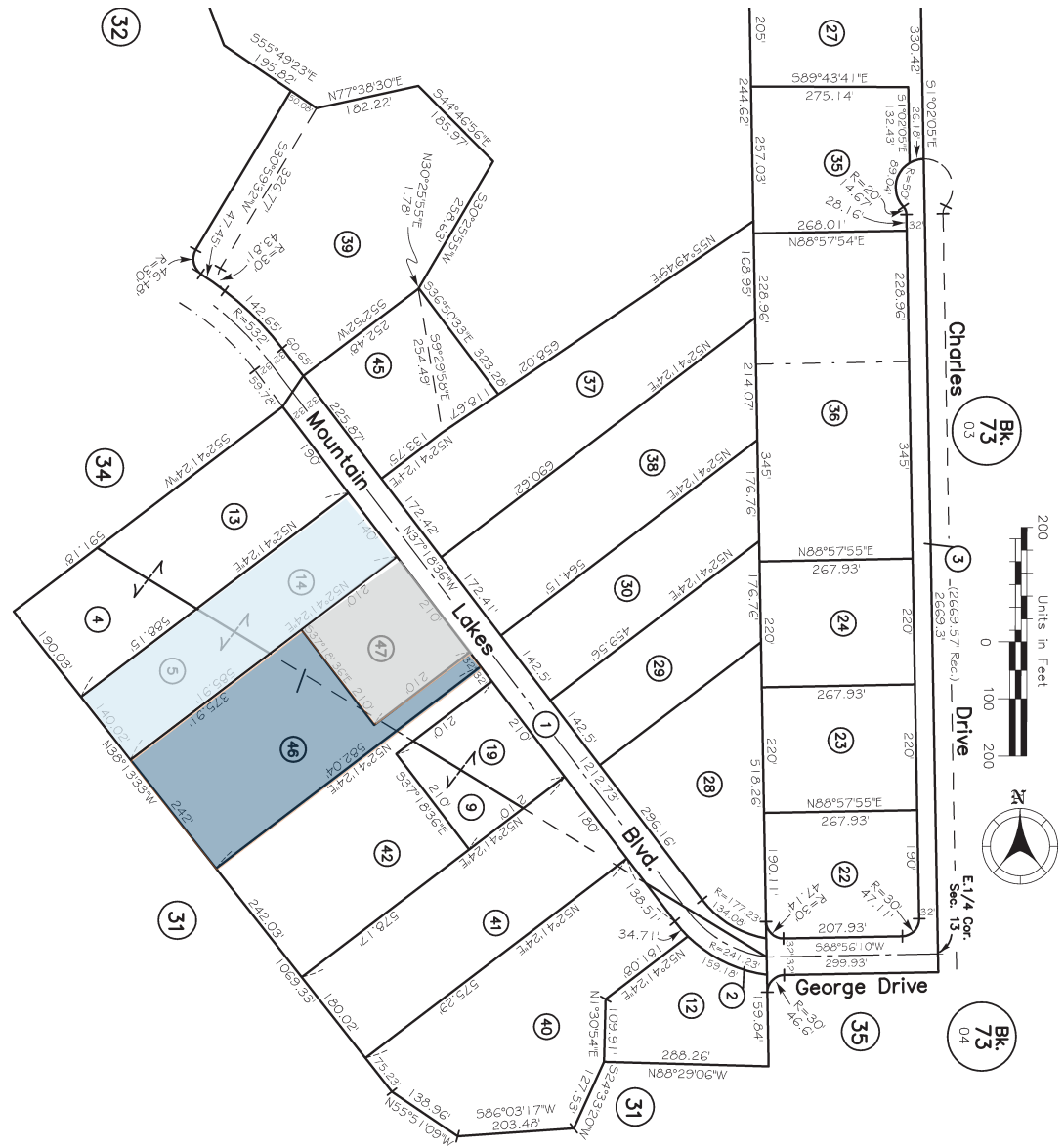
AVAILABLE

Size: ±5.15 acres Industrial Zoned Land

Price: Call for details

PROPERTY HIGHLIGHTS

- 3 parcels: 114-330-048-000
114-330-047-000
114-330-046-000
- Located in the prominent Mountain Lakes Business Park of Redding California
- Close proximity to I-5



Adam Elomari
Associate
707.580.8782
AElomari@kennedywilson.com
DRE #02112895

Kennedy Wilson Brokerage | 1860 Howe Avenue, Suite 400, Sacramento, CA 98525

Kennedy-Wilson Properties, Ltd. (Responsible Broker Identity, DRE #00659610) makes no warranty or representation as to the accuracy of the information contained herein. Terms of sale or lease and availability of the property are subject to change or withdrawal without notice.