

BRAND NEW FLEX FOR LEASE

1104 S FM 156, Justin, TX



Abundant
parking



Construction
completed in 2026



Prominent
location



9 overhead
doors



Ideal for
small business



Steve Shrum
817-887-3837

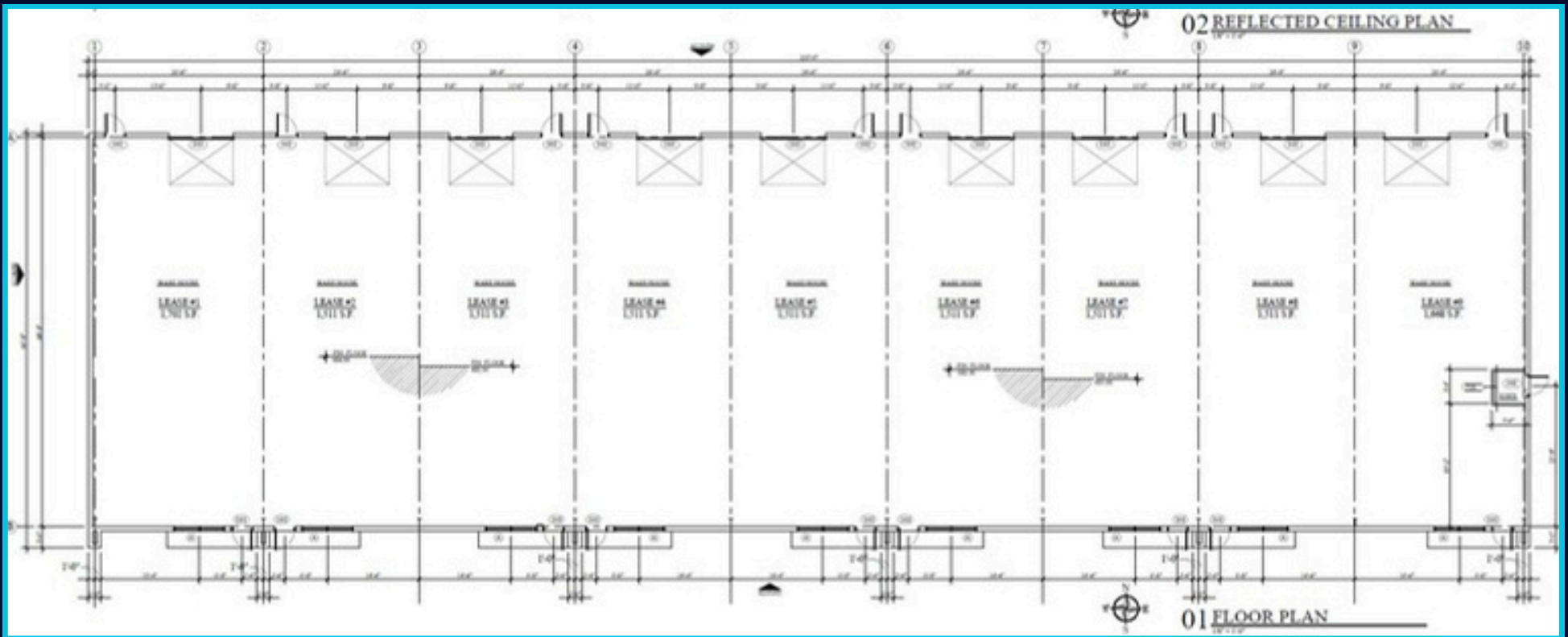
shrum@glaciercommercial.com



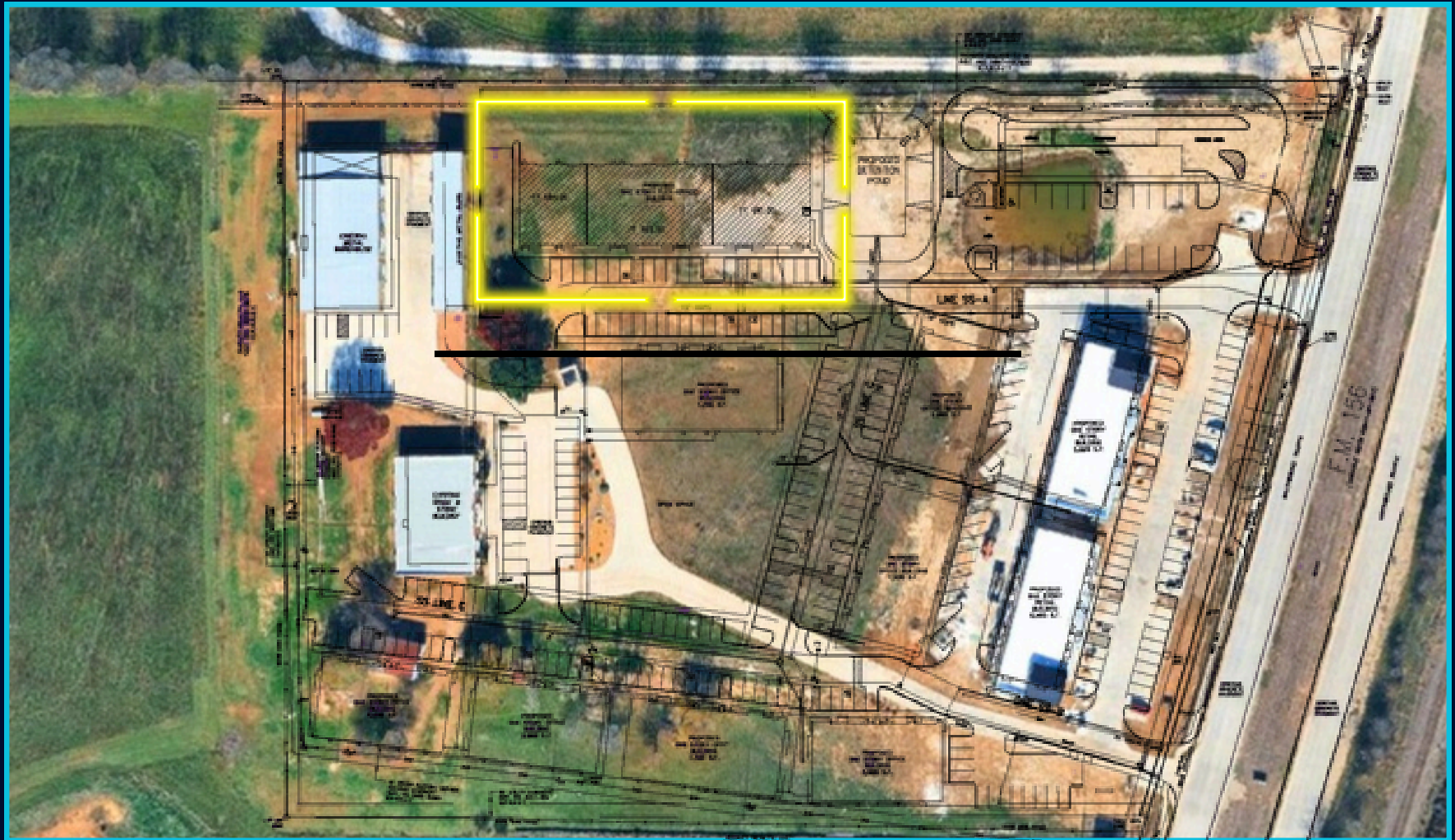
Andrew Beckman
214-616-4555

beckman@glaciercommercial.com

- Suites ranging from 1,500 TO 15,000 sf
- In shell condition
- 18' to 20' clear height

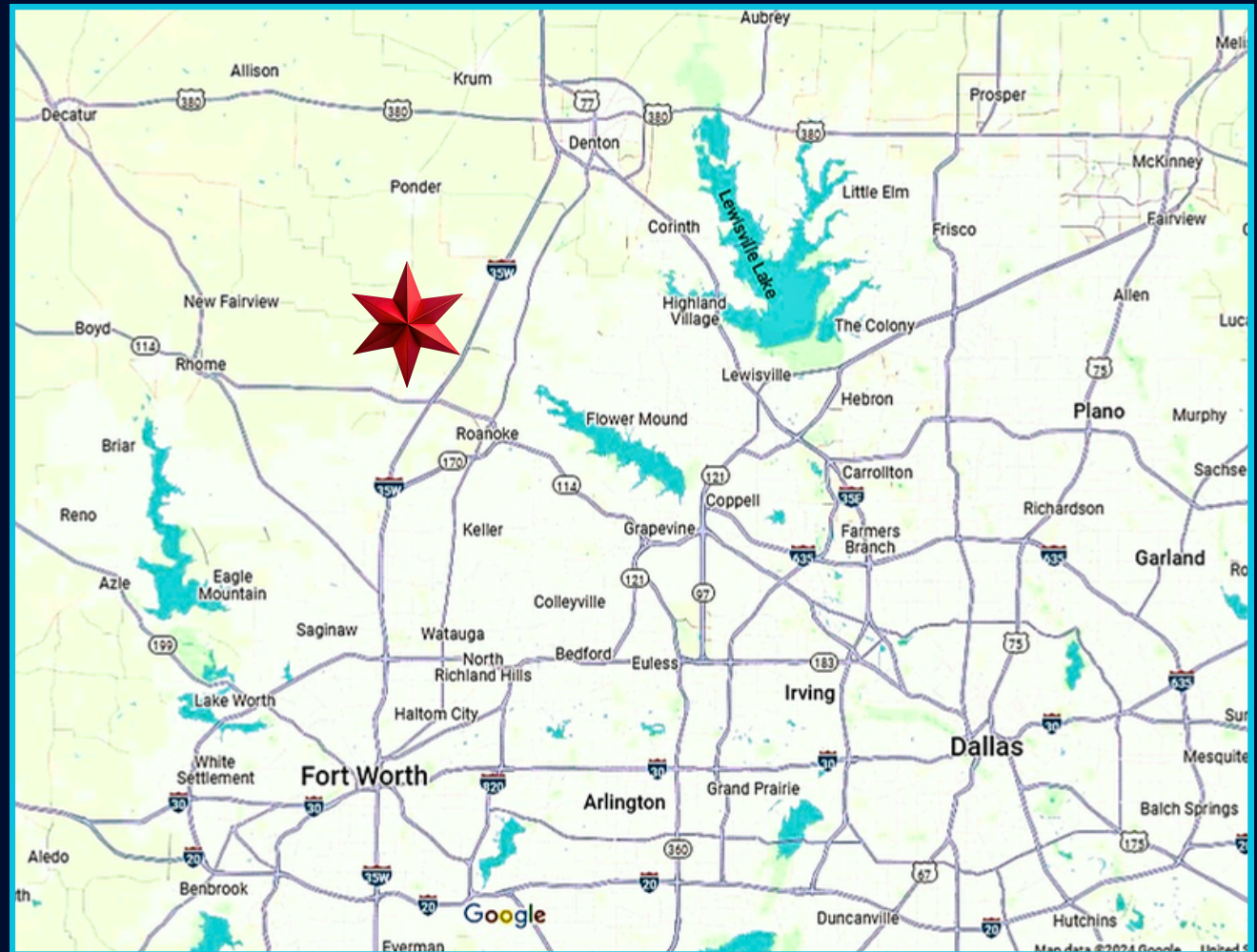


DEVELOPMENT SITE PLAN



Located in the heart of the fastest growing area in the Dallas-Fort Worth Metroplex.

- 8 miles north of Alliance Airport
- 22 miles from DFW Airport
- 8 miles from BNSF Alliance
- 5 miles to Hwy 114
- 6 miles to I-35W
- 11 miles to Hwy 380
- 14 miles from Hwy 287
- 10 miles from Circle T Ranch
- 10 miles from Charles Schwab Corporate
- 12 miles from Deloitte University
- 5 miles from Texas Motor Speedway
- 5 miles from Tanger Outlets Fort Worth



ABOUT JUSTIN



Founded in 1887, Justin is a small suburban city located in Denton County. It was named after Justin Henger, a local rancher. Despite its growth and modernization, you can still feel the rich history of cattle ranching and agriculture today. Justin is known for its family-friendly environment and community-oriented activities. Justin has seen consistent growth in recent years, with a focus on sustainable development and economic growth. The city's strategic plan includes initiatives for infrastructure development, economic development, and environmental sustainability. This plan focuses on enhancing the quality of life for residents, fostering economic prosperity, and ensuring the well-being of the community.



Steve Shrum
817-887-3837
shrum@glaciercommercial.com



Andrew Beckman
214-616-4555
beckman@glaciercommercial.com