



Available For Lease or Sale

Stockton Airport Submarket

1780 Industrial Drive | Stockton, CA

±111,160 SF Class “A” Warehouse / Distribution Center div. to ±41,700 SF

**UNDER NEW OWNERSHIP
READY FOR IMMEDIATE OCCUPANCY**

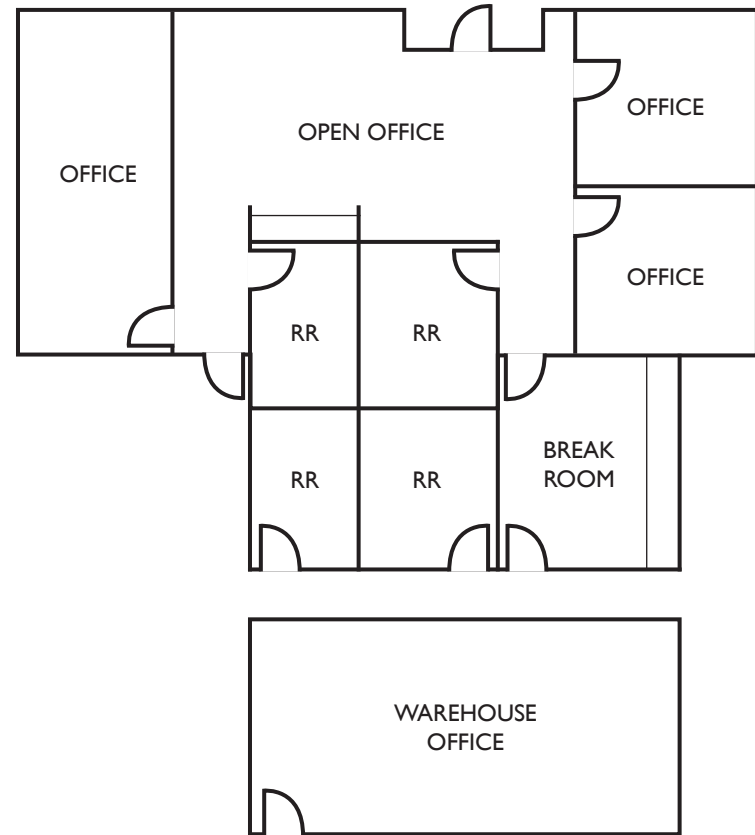
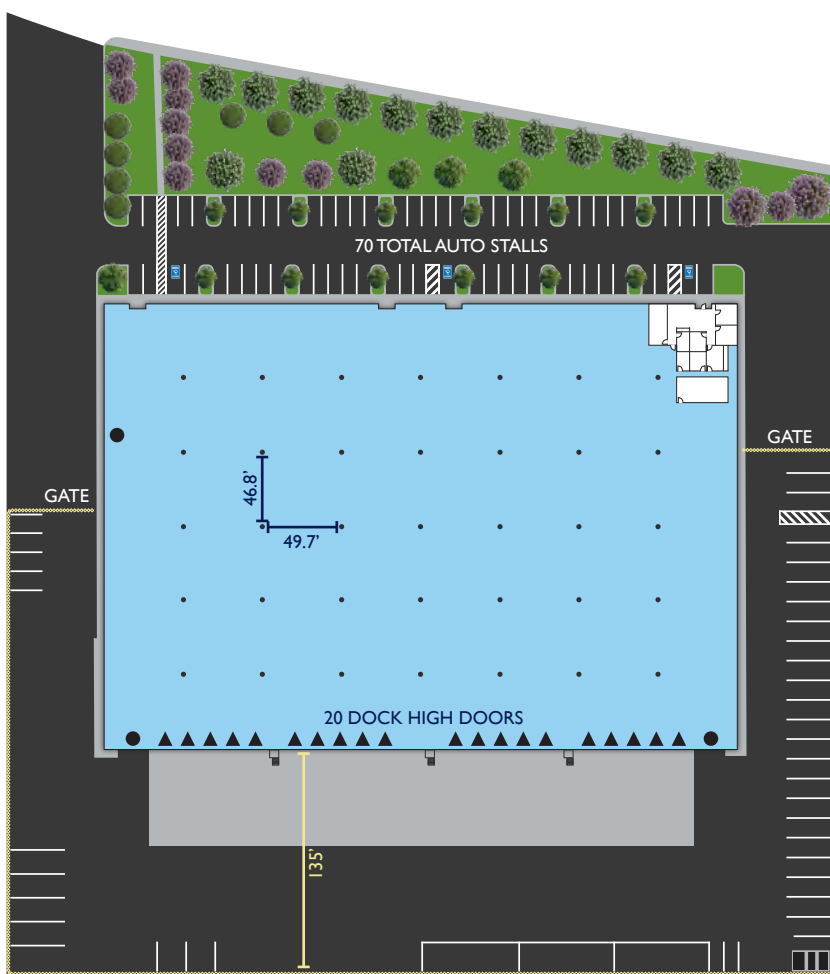
MIKE GOLDSTEIN, SIOR
+1 209 475 5106
michael.goldstein@colliers.com
CA License No. 01319234

ALEX HOECK, SIOR
+1 209 851 1191
alex.hoeck@colliers.com
CA License No. 01943853

RYAN MCSHANE, SIOR
+1 209 483 9851
ryan.mcshane@colliers.com
CA License No. 01295796

GREIG LAGOMARSINO, SIOR
+1 510 433 5809
greig.lago@colliers.com
CA License No. 01063817



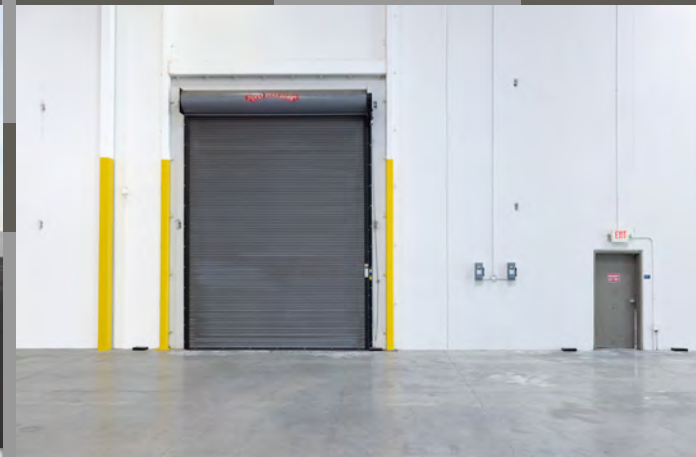


BUILDING 1 SPECIFICATIONS

Building Size	±111,160 SF
Available Size	±111,160 SF div. to ±41,700 SF
Building Dimensions	280' D x 397' W
Parcel Size/FAR	±6.43 acres / 39.7%
Administrative Office	±1,345 SF
Warehouse Office	±512 SF
Dock High Doors	20 (9' x 10') (8 doors with EOD, 3 doors with pit levelers)
Grade Level Doors	3 (12' x 14')
Power	2,000 Amps, 277/480V, 3-Phase
Lighting	T-5
Clear Height	±30' - 32'

Sprinklers	ESFR
Column Spacing	46.8' x 49.7'
Floor Slab	6"
Year Built	2008
Skylights	2%
Auto Parking	70 stalls
Yard	Fully fenced, lighted and secured
Water	City of Stockton
Storm / Storm	City of Stockton
Power & Electric	PG&E
Zoning	I-G, General Industrial (City of Stockton)

1780 INDUSTRIAL DRIVE BUILDING PHOTOS



Site
1780 Industrial Drive
Stockton, California



GREAT LOCATION

EASY ACCESS TO MAJOR ARTERIALS
I-5, I-205, HWY 99 & HWY 120



INTERMODAL FACILITIES

WITHIN CLOSE PROXIMITY TO
UP & BNSF INTERMODAL FACILITIES



FREIGHT

MULTIPLE PORTS LOCATED WITHIN
60 MILES OF THE LOCATION

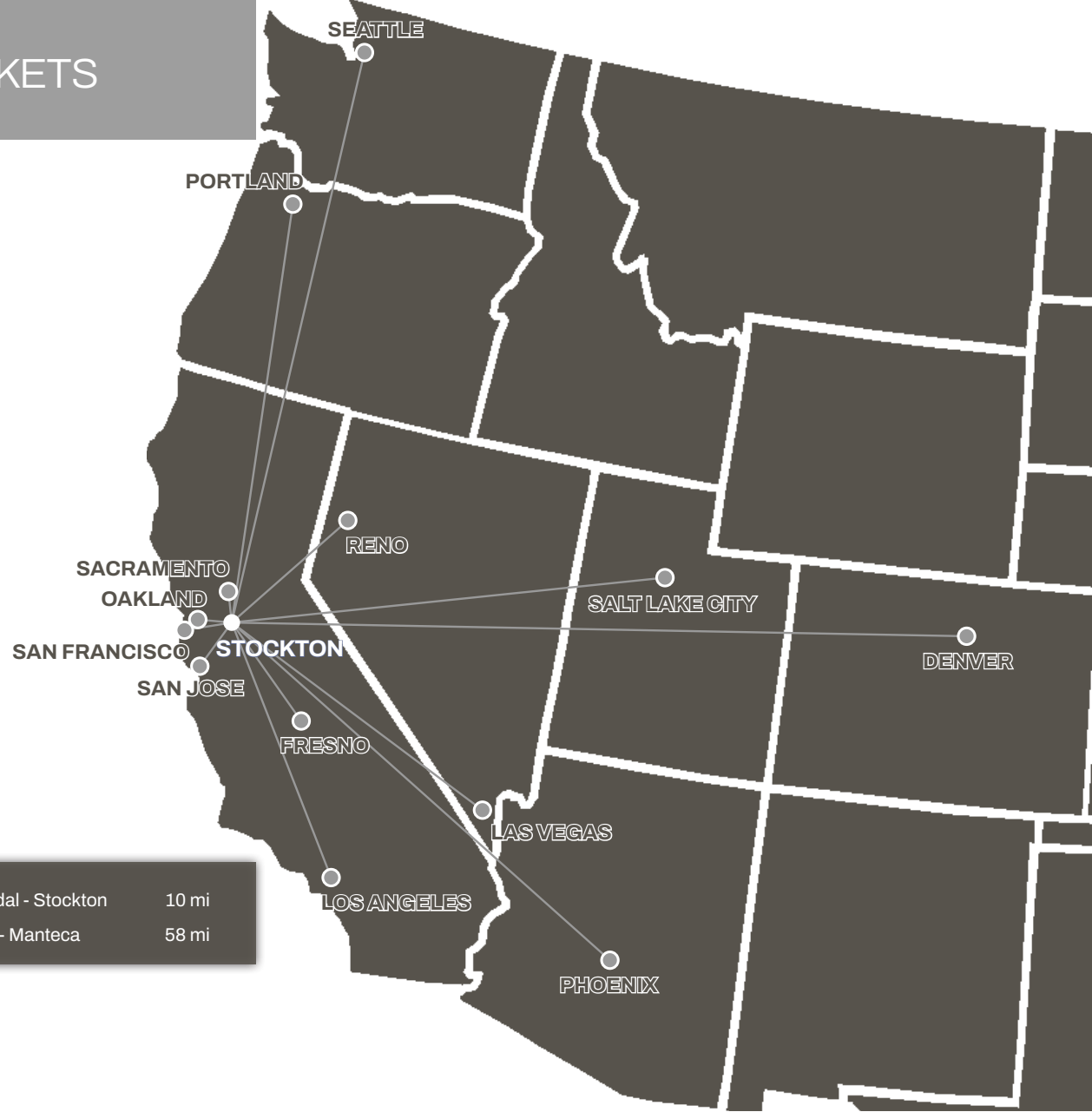
PROXIMITY TO WEST COAST MARKETS

City	Distance (mi)
Sacramento	53
Oakland	72
San Jose	76
San Francisco	84
Fresno	120
Reno	181
Los Angeles	337
Las Vegas	513
Portland	635
Phoenix	698
Salt Lake City	699
Seattle	807

Airport	Distance (mi)
Stockton Metro Airport	1
Oakland Int'l Airport	67
Sacramento Int'l Airport	63
San Jose Int'l Airport	72
San Francisco Int'l Airport	85

Port	Distance (mi)
Port of Stockton	10
Port of West Sacramento	58
Port of Oakland	72
Port of San Francisco	88
Port of LA & Long Beach	361
Port of Seattle	802

Rail	Distance (mi)
BNSF Intermodal - Stockton	10
UP Intermodal - Manteca	58



The **Central Valley** is the premier location from which to serve Northern California & the Western United States.

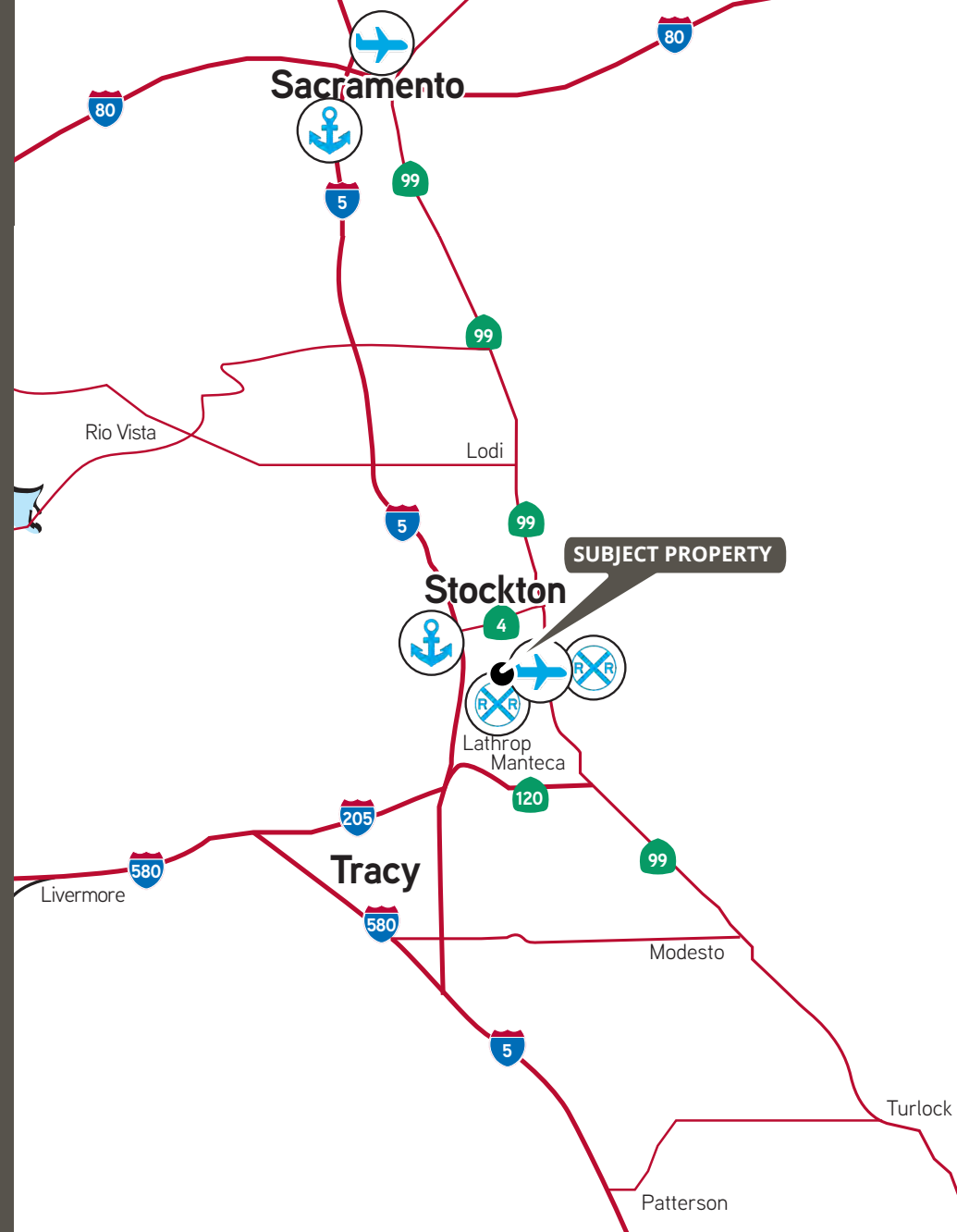
About the Ownership



WHO WE ARE

GO Industrial is an industrial development firm that delivers forward thinking development and workplace strategies for industrial users. With services that include development management, asset management, and project management, the GO Industrial team brings a wholistic approach to the industrial sector from acquisition through disposition. GO Industrial has vast experience with projects that have significant hurdles to overcome in order to achieve success, including environmental, entitlement and infrastructure challenges. These skills have made the GO Industrial team known for their ability to execute on ground-up developments and value-add projects that require significant vision. Put simply, there is no project too challenging for the GO Industrial team. With a focused approach on every project, GO Industrial simplifies the development process for our partners and aim to exemplify the company slogan: INDUSTRIAL UNBOXED.

This document has been prepared by Colliers International for advertising and general information only. Colliers International makes no guarantees, representations or warranties of any kind, expressed or implied, regarding the information including, but not limited to, warranties of content, accuracy and reliability. Any interested party should undertake their own inquiries as to the accuracy of the information. Colliers International excludes unequivocally all inferred or implied terms, conditions and warranties arising out of this document and excludes all liability for loss and damages arising there from. This publication is the copyrighted property of Colliers International and/or its licensor(s). ©2025. All rights reserved.



EXCLUSIVE BROKERS:

MIKE GOLDSTEIN, SIOR
Vice Chair
Executive Managing Director
CA License No. 01319234
michael.goldstein@colliers.com
+1 209 475 5106

ALEX HOECK, SIOR
Executive Vice President
CA License No. 01943853
alex.hoeck@colliers.com
+1 209 851 1191

RYAN MCSHANE, SIOR
Vice Chair
CA License No. 01295796
ryan.mcshane@colliers.com
+1 209 483 9851

GREIG LAGOMARSINO, SIOR
Vice Chairman
CA License No. 01063817
greig.lago@colliers.com
+1 510 433 5809

3439 Brookside Road, Suite 108
Stockton, CA 95219
P: +1 209 475 5100
F: +1 209 475 5102
colliers.com

