

# FOR LEASE

507 W Foothill Blvd, UNIT C & D,  
Monrovia, CA 91016

GEORGE C. KALBACH, PR  
BRIAN WILSON, LMFT

**REMAX**  
COMMERCIAL



REMAX ELITE REALTY  
Commercial Division  
842 E. Valley Blvd,  
Alhambra, CA 91801



REMAX 2025 Commercial Market  
#6 of TOP 100 in the U.S.  
#31 of TOP 100 Worldwide



**STEVEN RHEE, MBA**  
Vice President | DRE# 01894583  
**(714) 788-7777**  
srhee@remaxcre.net

**Address** 507 W Foothill Blvd,  
Unit C & D,  
Monrovia, CA 91016

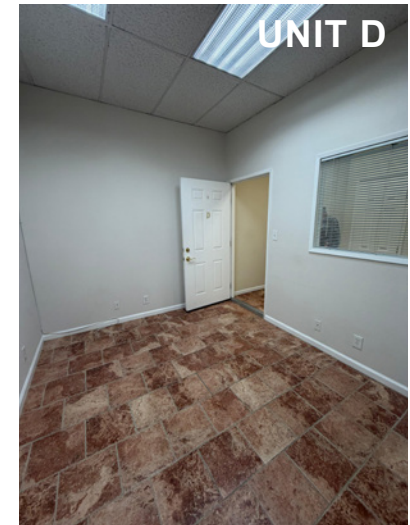
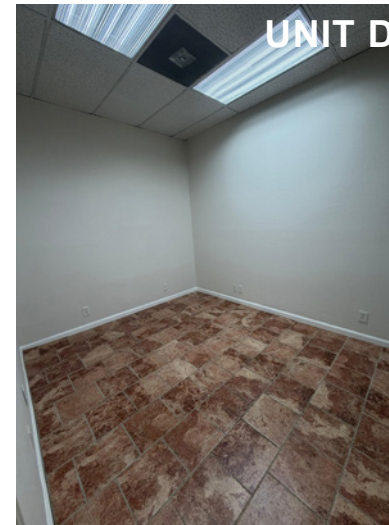
**Property Type:** Office Building

**Unit C:** +/- 130 sqft: \$645 month  
**Unit D:** +/- 100 sqft: \$600 month



- Both units includes electricity, trash and water. Tenant to pay for internet and janitorial services.
- Great location on Foothill Blvd
- Available NOW
- Easy to SHOW

**Showing by Appointment**  
Please contact Steve at (714) 788-7777



REMAX ELITE REALTY - Commercial Division  
842 E. Valley Blvd, Alhambra, CA 91801



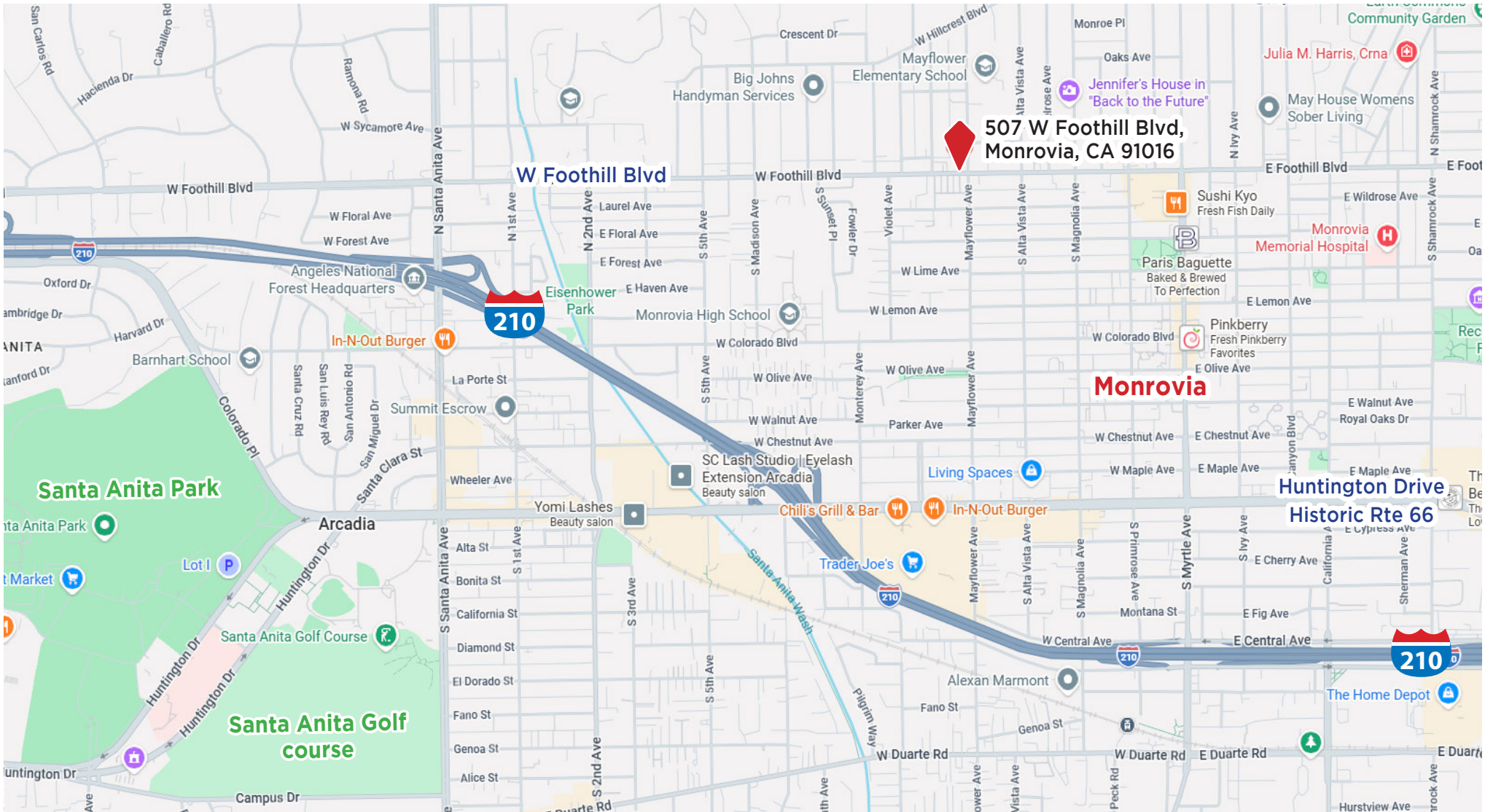
NO WARRANTY OF REPRESENTATION IS MADE TO THE ACCURACY OF THE FOREGOING INFORMATION. TERMS OF SALE OR LEASE AND AVAILABILITY ARE SUBJECT TO CHANGE OR WITHDRAWAL WITHOUT NOTICE. BUYER TO CONFIRM ALL INFORMATION. EACH OFFICE INDEPENDENTLY OWNED AND OPERATED.



REMAX 2025 Commercial Market  
#6 of TOP 100 in the U.S.  
#31 of TOP 100 Worldwide



**STEVEN RHEE, MBA**  
Vice President | DRE# 01894583  
**(714) 788-7777**  
srhee@remaxcre.net



REMAX ELITE REALTY - Commercial Division  
842 E. Valley Blvd, Alhambra, CA 91801



NO WARRANTY OF REPRESENTATION IS MADE TO THE ACCURACY OF THE FOREGOING INFORMATION. TERMS OF SALE OR LEASE AND AVAILABILITY ARE SUBJECT TO CHANGE OR WITHDRAWAL WITHOUT NOTICE. BUYER TO CONFIRM ALL INFORMATION. EACH OFFICE INDEPENDENTLY OWNED AND OPERATED.



REMAX 2025 Commercial Market  
#6 of TOP 100 in the U.S.  
#31 of TOP 100 Worldwide



**STEVEN RHEE, MBA**  
Vice President | DRE# 01894583  
**(714) 788-7777**  
srhee@remaxcre.net