

FOR LEASE

12401 Brickyard Blvd

Beltsville, MD 20705



LOCATION REVIEW

LEASE RATE: **\$29PSF NNN**

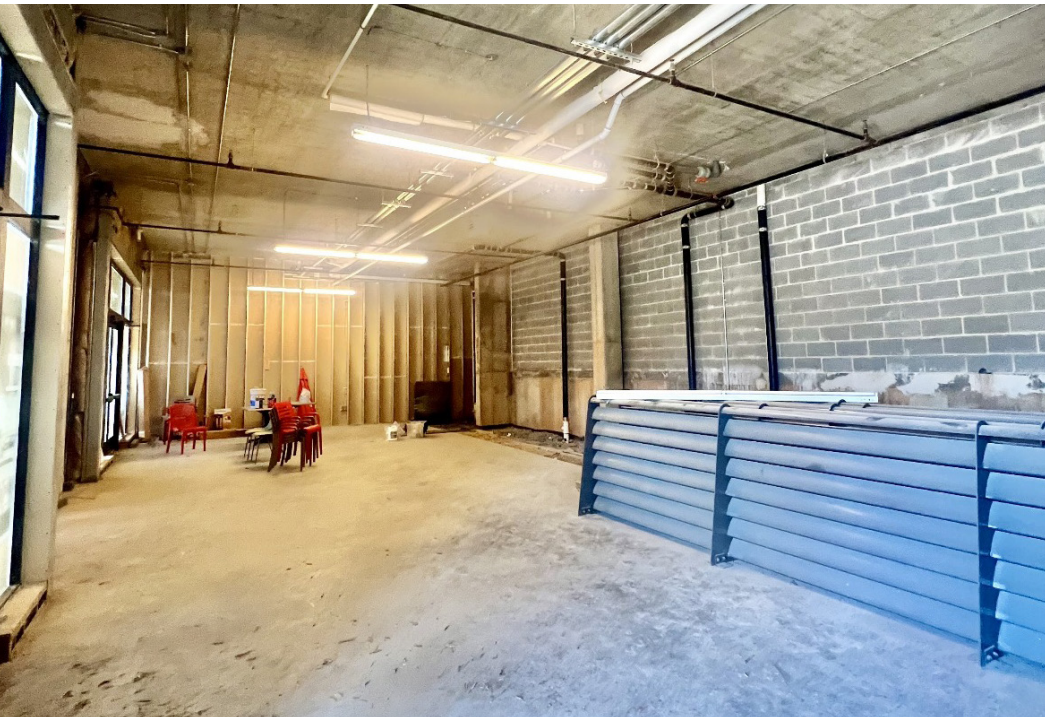
AVAILABLE SF: **1,900SF**

HIGHLIGHTS

- ▶ LIT, SHELL CONDITION
- ▶ VACANT
- ▶ STREET PARKING
- ▶ 433 APARTMENTS DIRECTLY ABOVE
- ▶ 25K CARS PASSING BY DAILY



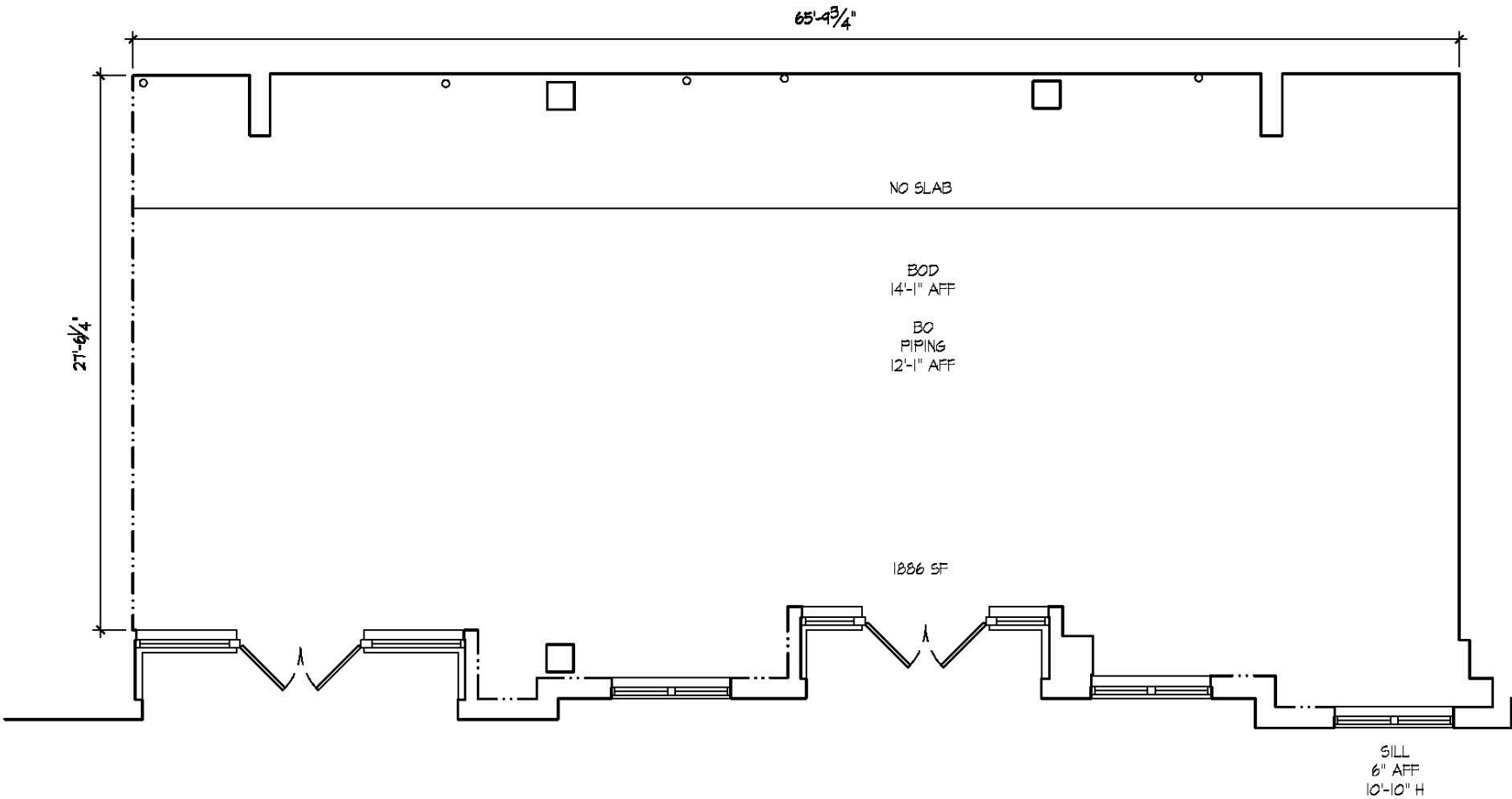
PHOTOS



PHOTOS



FLOOR PLAN



www.arch-surveys.com

**Architectural
Building
Surveys**

**The Mark
at Brickyard**

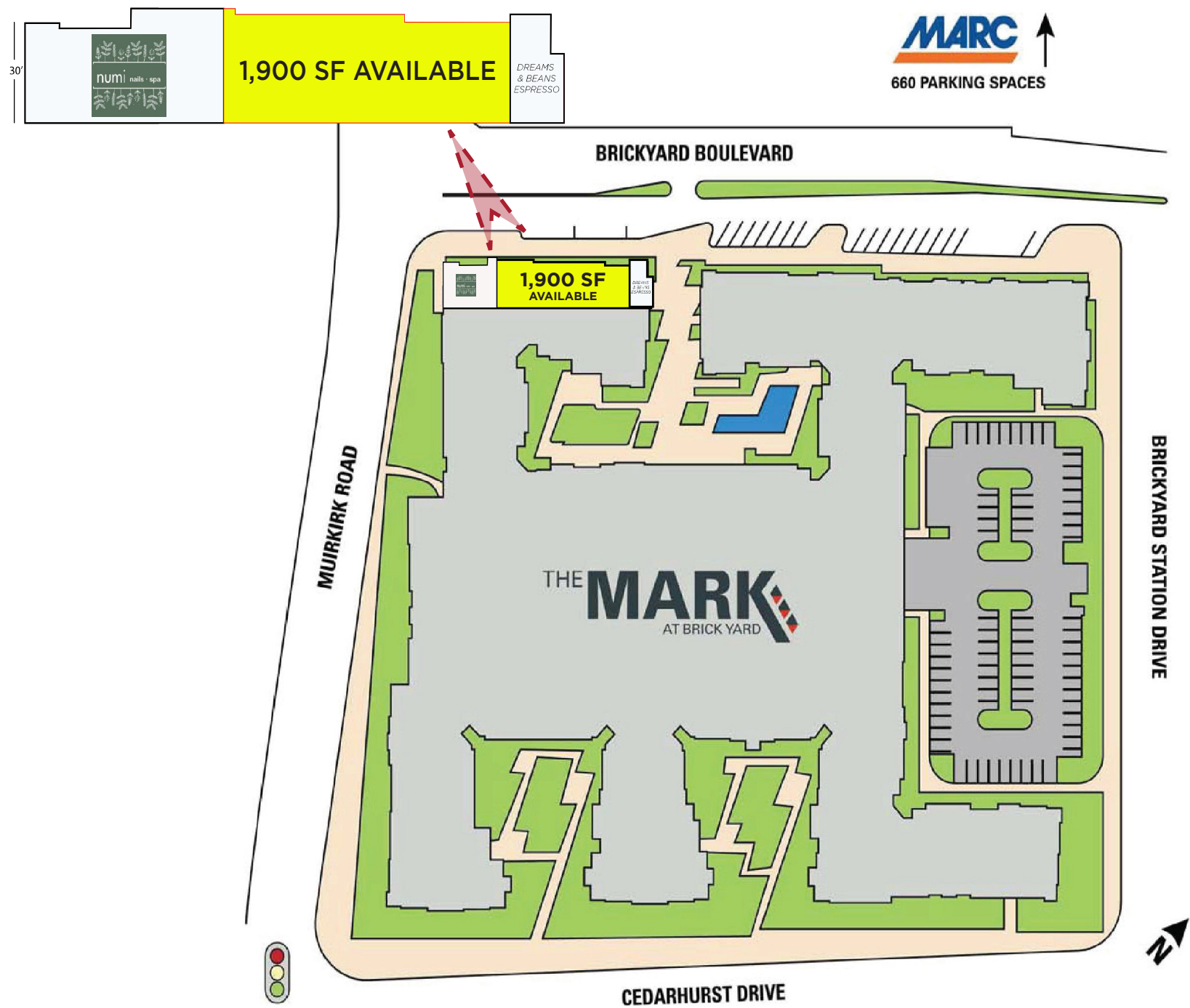
12401 Brickyard Blvd
Beltsville, MD 20705

DATE: 2.19.25
DRAWING: 05030
SCALE: 1/8" = 1'-0"
SHT SIZE: 8.5x11

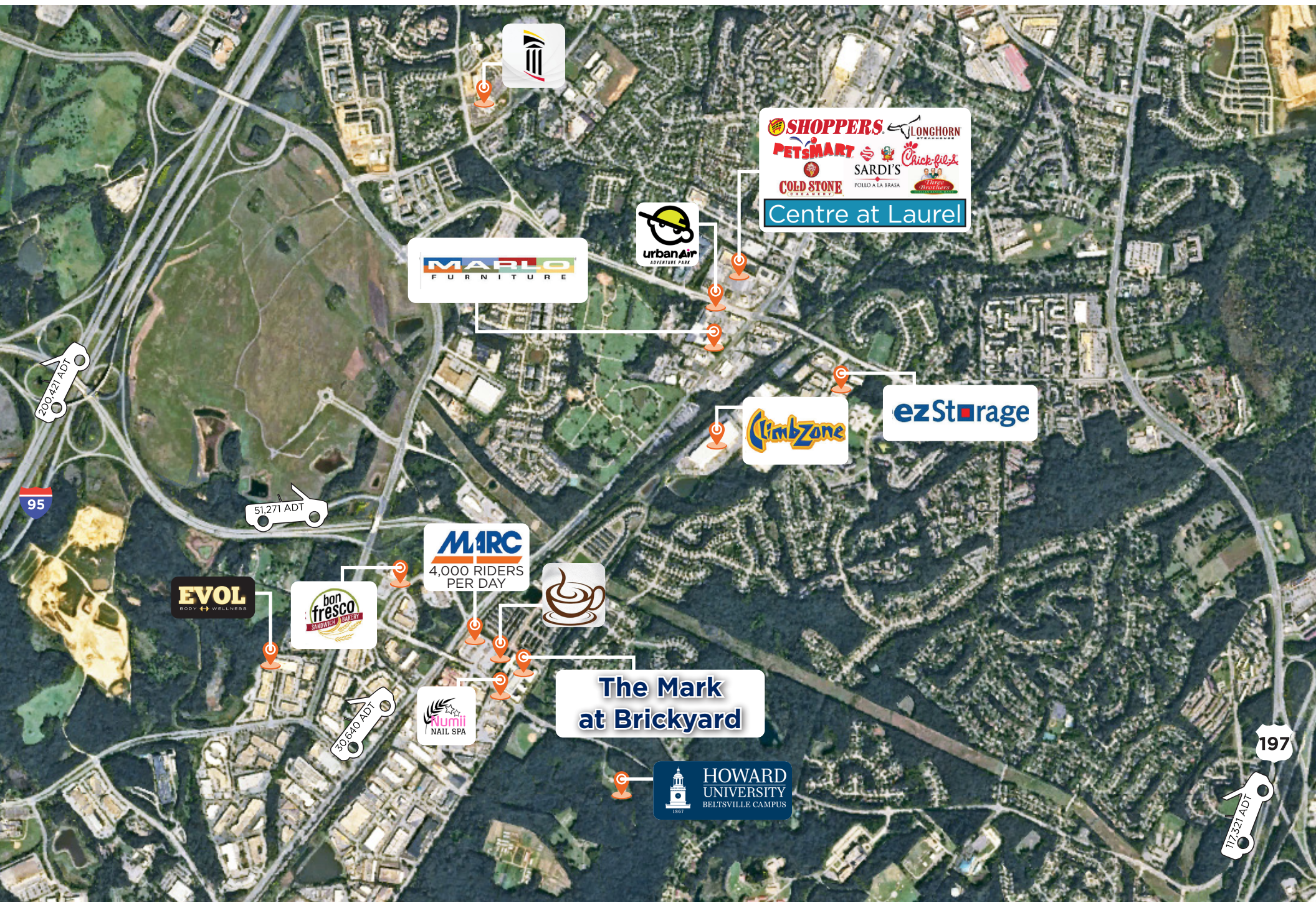
EXISTING
FLOOR
PLAN

EX1

SITE PLAN

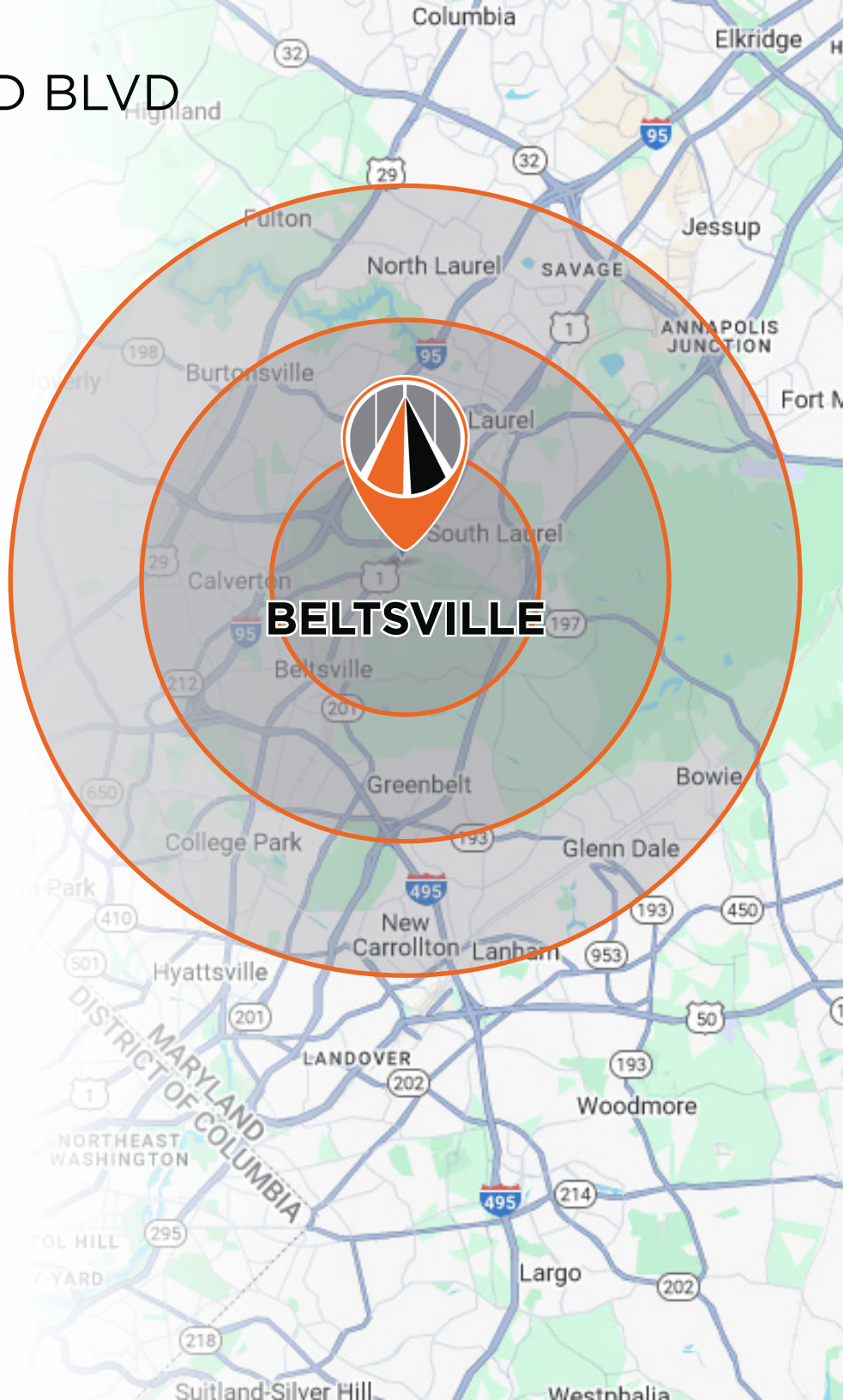
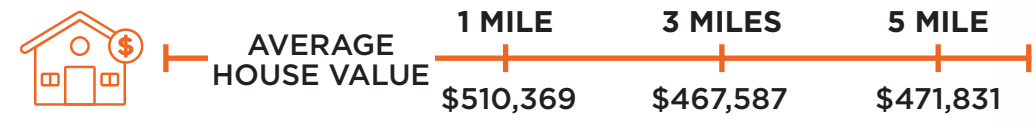
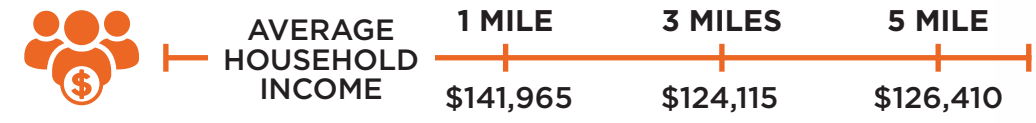
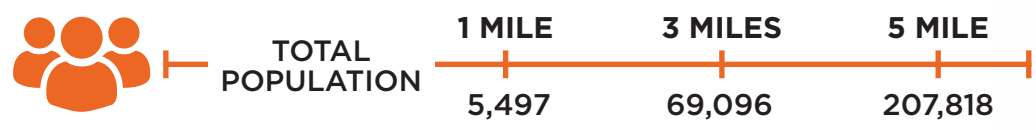
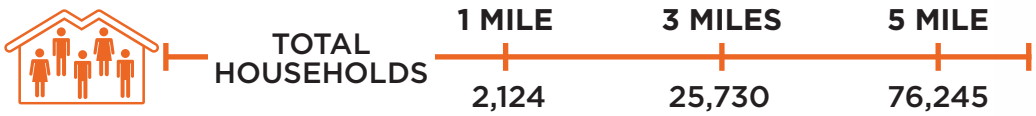


AERIAL MAP



DEMOGRAPHICS | 12401 BRICKYARD BLVD

HOUSEHOLDS & INCOME





12401 BRICKYARD BLVD

BELTSVILLE, MD 20705

CONTACT

Ross Conn

Broker

Cell: 301-275-5509

Work: 410-342-5263

email: Ross@AvenueRealEstateLLC.com

web: avenuerealestatellc.com



9711 Washingtonian Blvd STE 550

Gaithersburg MD 20878

410-342-5263

To view Our Available Listings, Please visit
www.averealestate.com/properties