



Colliers

2771480V

Flex Space For Lease

Contact Us:

Justin Smith, SIOR

Executive Vice President
+1 704 517 9985
justin.smith@colliers.com

Greg Gosselin

Vice President
+1 336 408 9726
greg.gosselin@colliers.com

300 W. Summit Ave. Suite 200
Charlotte, NC 28203
P: +1 704 409 9933
F: +1 704 409 9934
colliers.com/charlotte

Nisbet Business Center

12245 Nations Ford Road | Suite 504
Pineville, NC

Nisbet Business Center is an industrial flex park that caters to small mid-sized tenants and well located near the York County line in Pineville, NC. This property has easy access to Westinghouse Blvd, Interstate 77, Interstate 485, Fort Mill and Pineville.

The park features office | warehouse suites with dock high door or drive in ramp capabilities, plus ample parking in the front and rear of buildings.

Copyright © 2026 Colliers International. Information herein has been obtained from sources deemed reliable, however its accuracy cannot be guaranteed. The user is required to conduct their own due diligence and verification.

Accelerating success.

Flex Space For Lease

Suite 504 Highlights

±2,400 SF Total Available

(3) Private Offices

(2) Restrooms

Kitchenette

Reception Area

(1) 12' x 14' Dock High Door

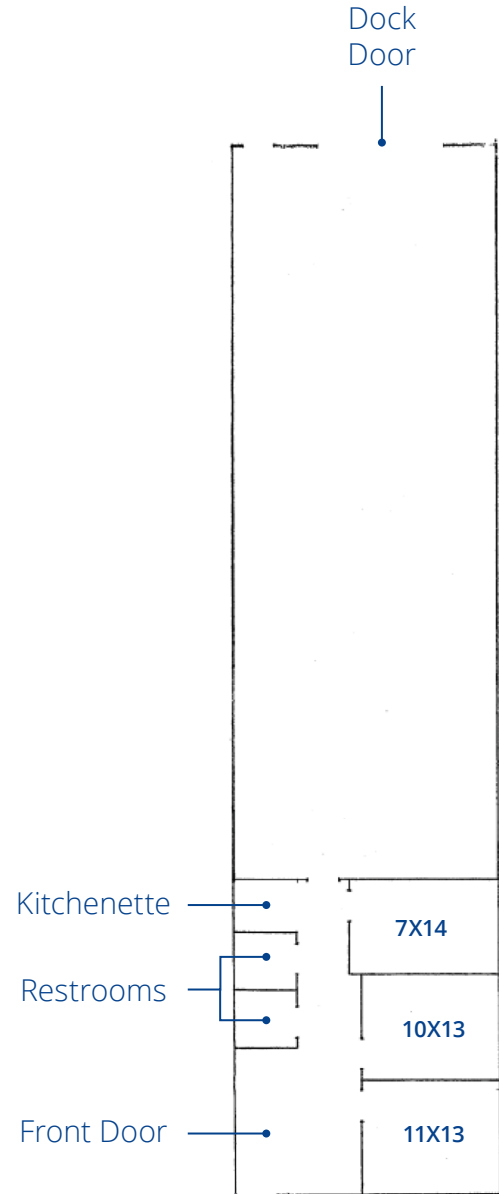
68' x 24' Warehouse Space

3-Phase 277/480V Power - ±200 Amps

16' 5" Clear Height

OPEX: \$2.70 PSF

Lease Rate: Contact Broker for Pricing



Justin Smith, SIOR
Executive Vice President
+1 704 517 9985
justin.smith@colliers.com

Greg Gosselin
Vice President
+1 336 408 9726
greg.gosselin@colliers.com

