



15894 HIGHWAY 17
P.O. BOX 56
HAMPSTEAD, NC 28443
910/270-5100 FAX: 910/270-5110

FOR LEASE HAMPSTEAD BUILDING



**22270 HIGHWAY 17
HAMPSTEAD, NORTH CAROLINA**

This well maintained +/- 875 square foot stand-alone building has excellent visibility on busy Highway 17. With a garage door, fenced yard and General Business zoning, this is a ideal facility for a wide variety of commercial users. Available immediately. Call today.

**CALL
HENRY NADEAU
(910) 524-7184**

Commercial & Investment Real Estate Specialists

email: info@creativecommercial.biz
www.creativecommercial.biz



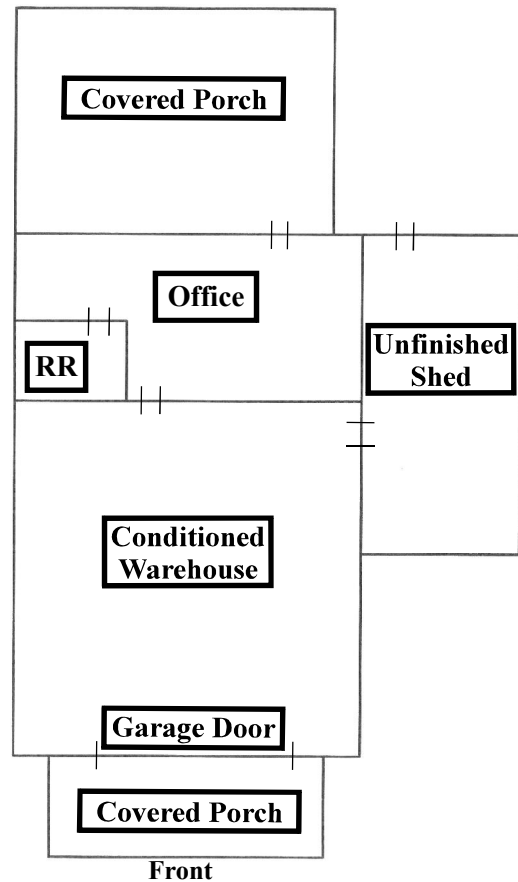
22270 HIGHWAY 17

THE BUILDING

- 1,574 Square Feet Under Roof
 - 875 SF Heated And Cooled
 - 223 SF Unfinished Shed
 - 476 SF Covered Porches
- One Restroom
- Three Phase Power Available
- One 16' x 7' Garage Door

THE LOT

- +/- .43 Acres
- Two Access Points On Highway 17
- Municipal Water And On-Site Septic
- Pender County General Business (GB) Zoning
- Tax Parcel IDs: 4215-66-0634-0000
And 4215-56-9543-0000



THE OFFERING

\$2,550/Month

Includes Property Taxes And Insurance

CREATIVE COMMERCIAL PROPERTIES, INC.

CALL

HENRY NADEAU

(910) 524-7184

Email: henry@creativecommercial.biz

www.creativecommercial.biz



Creative Commercial Properties, Inc. reasonably believes the information in this brochure is fairly and accurately stated. However, any prospective purchaser is urged to independently confirm its accuracy and completeness.

