



FOR LEASE

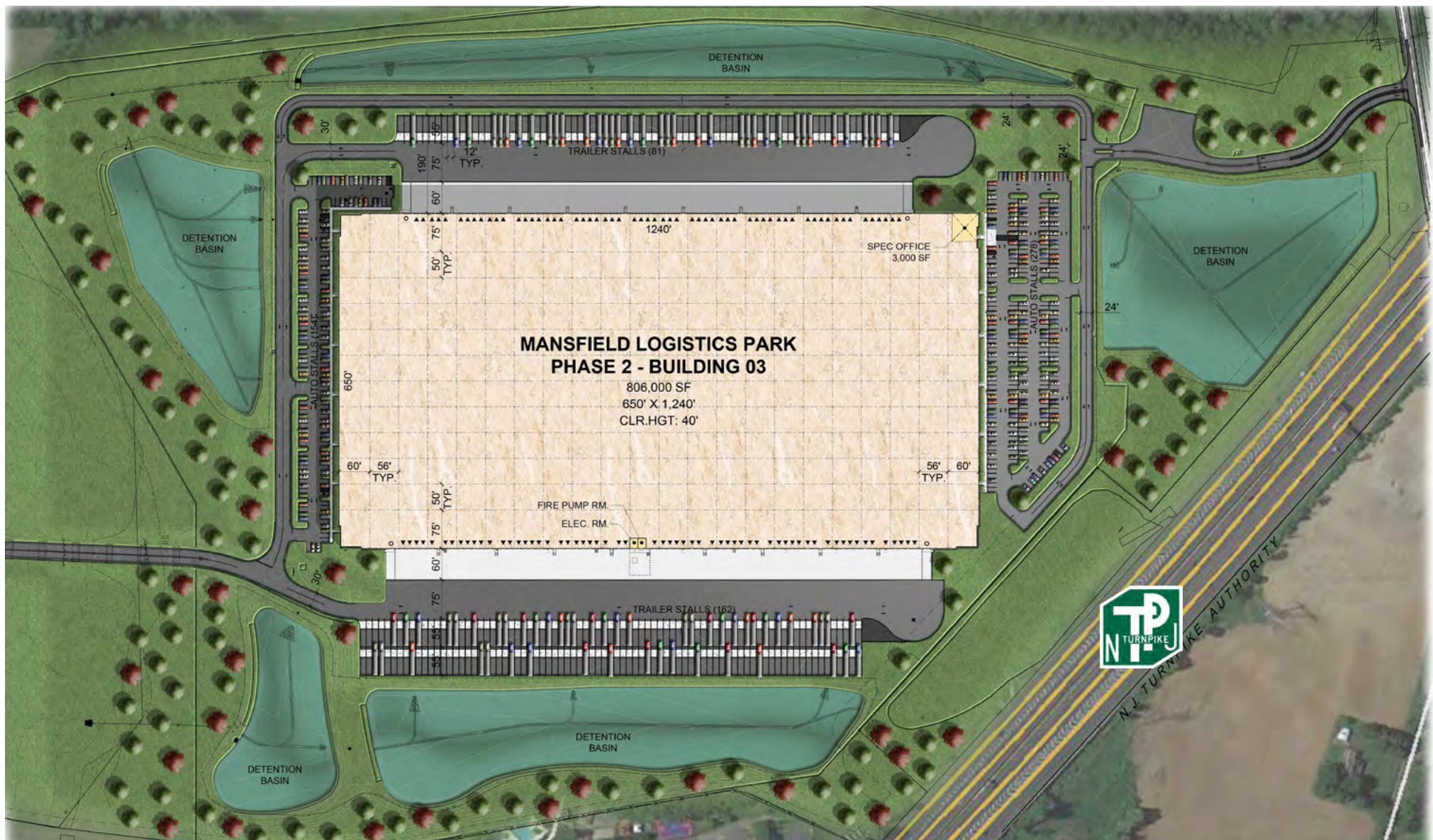
±806,000 SF

BUILDING 3 | NOW COMPLETE
PART OF MASTER PLANNED INDUSTRIAL PARK

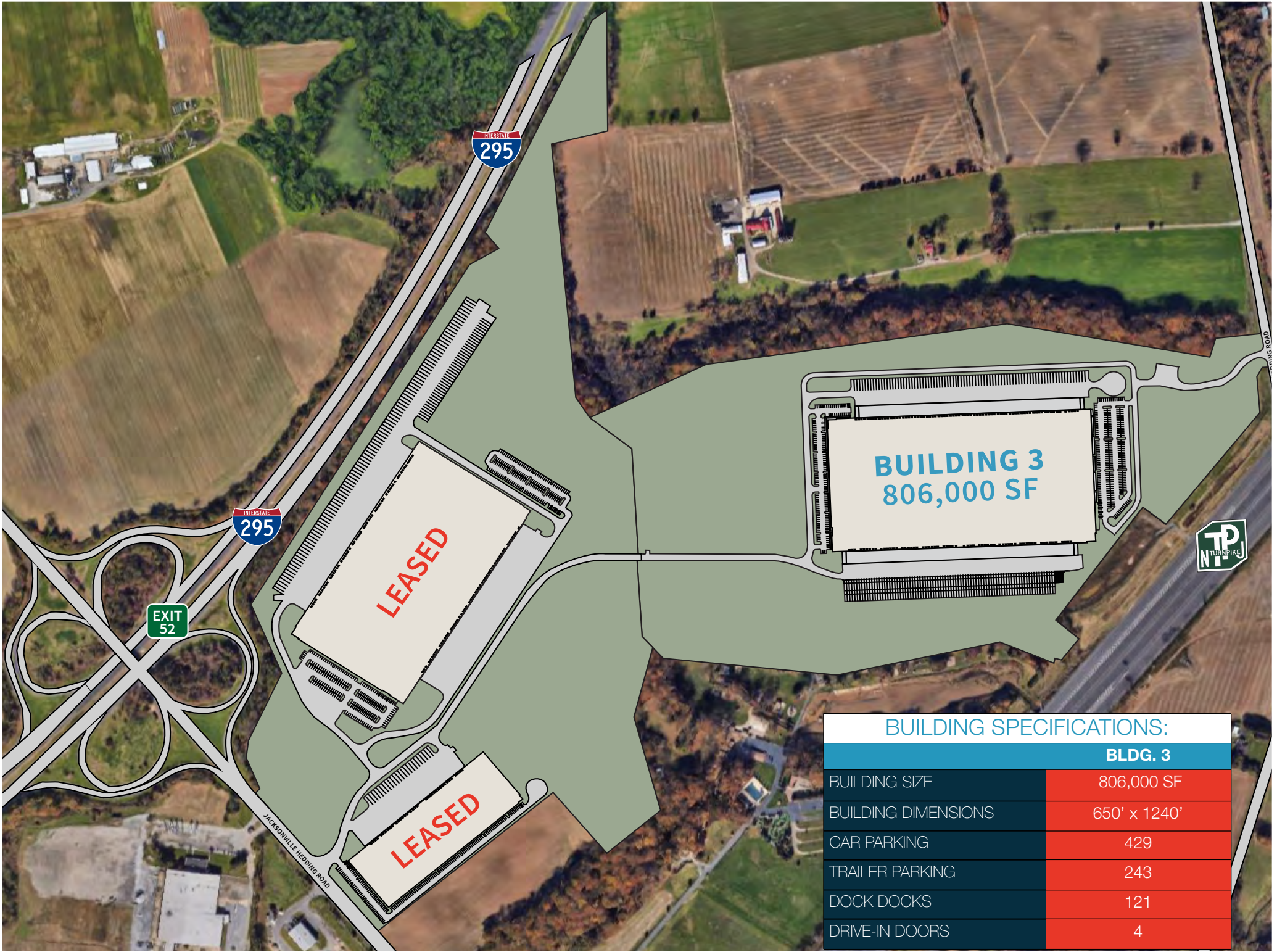


MRP | INDUSTRIAL

MANSFIELD
LOGISTICS PARK

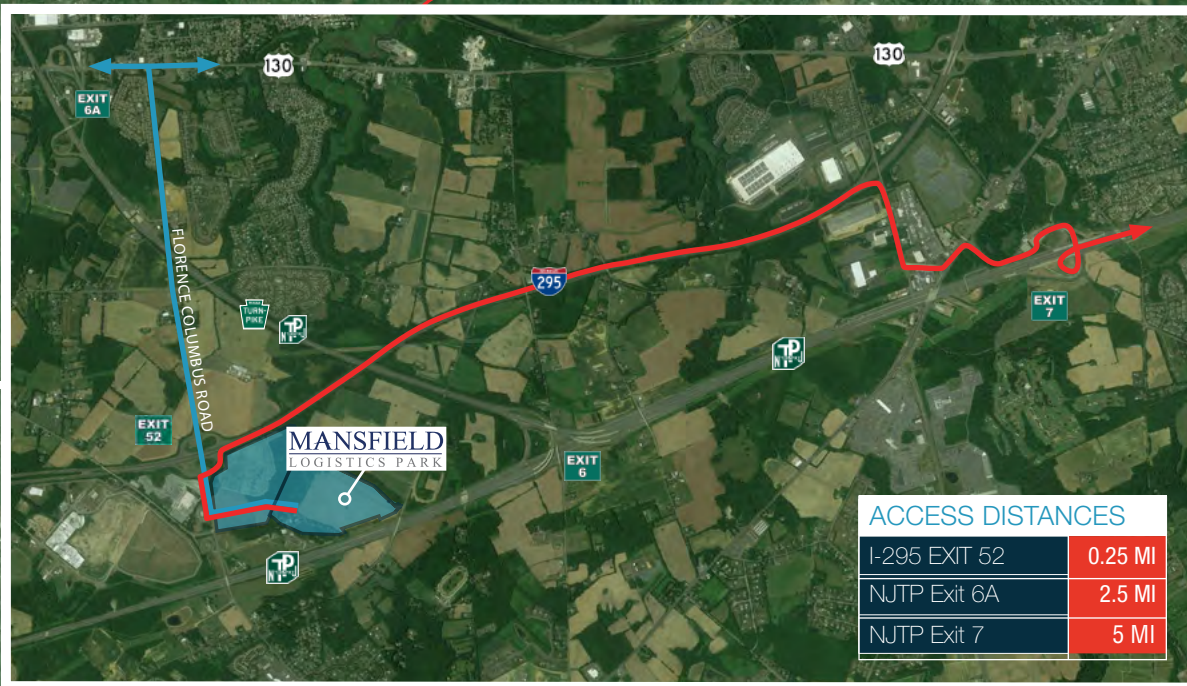


- ±806,000 square feet
- Building dimensions: 650' x 1240'
- ± 3,100 SF Office area
- 40' minimum clear height (measured at underside of steel joist at first column line from loading walls)
- 121 dock doors (9'x10') in a cross-dock format
- 4 drive-in doors (12'x14') on grade
- 243 trailer spaces
- 429 car parking spaces
- Standard column spacing of 50' x 56' with 75' speed bays
- 8" thick, 4000 PSI non-reinforced concrete slab on grade
- LED light fixtures with motion sensors
- ESFR sprinkler system
- Roof mounted, gas-fired, Cambridge heating units
- 4,000 amp 277/480 volt, 3-phase electrical service
- Fully secured site



BUILDING SPECIFICATIONS:

| BLDG. 3 | |
|---------------------|--------------|
| BUILDING SIZE | 806,000 SF |
| BUILDING DIMENSIONS | 650' x 1240' |
| CAR PARKING | 429 |
| TRAILER PARKING | 243 |
| DOCK DOCKS | 121 |
| DRIVE-IN DOORS | 4 |





**TOTAL
LABOR FORCE**
254,326

5.0% of the state's total
labor force



UNEMPLOYMENT RATE
5.2%

vs 5.0% state wide



**TRANSPORTATION/
WAREHOUSE EMPLOYEES**
16,735

6.0% of the state's
Transportation/Warehouse workforce



TOTAL POPULATION
482,670

5.0% of the state's total population

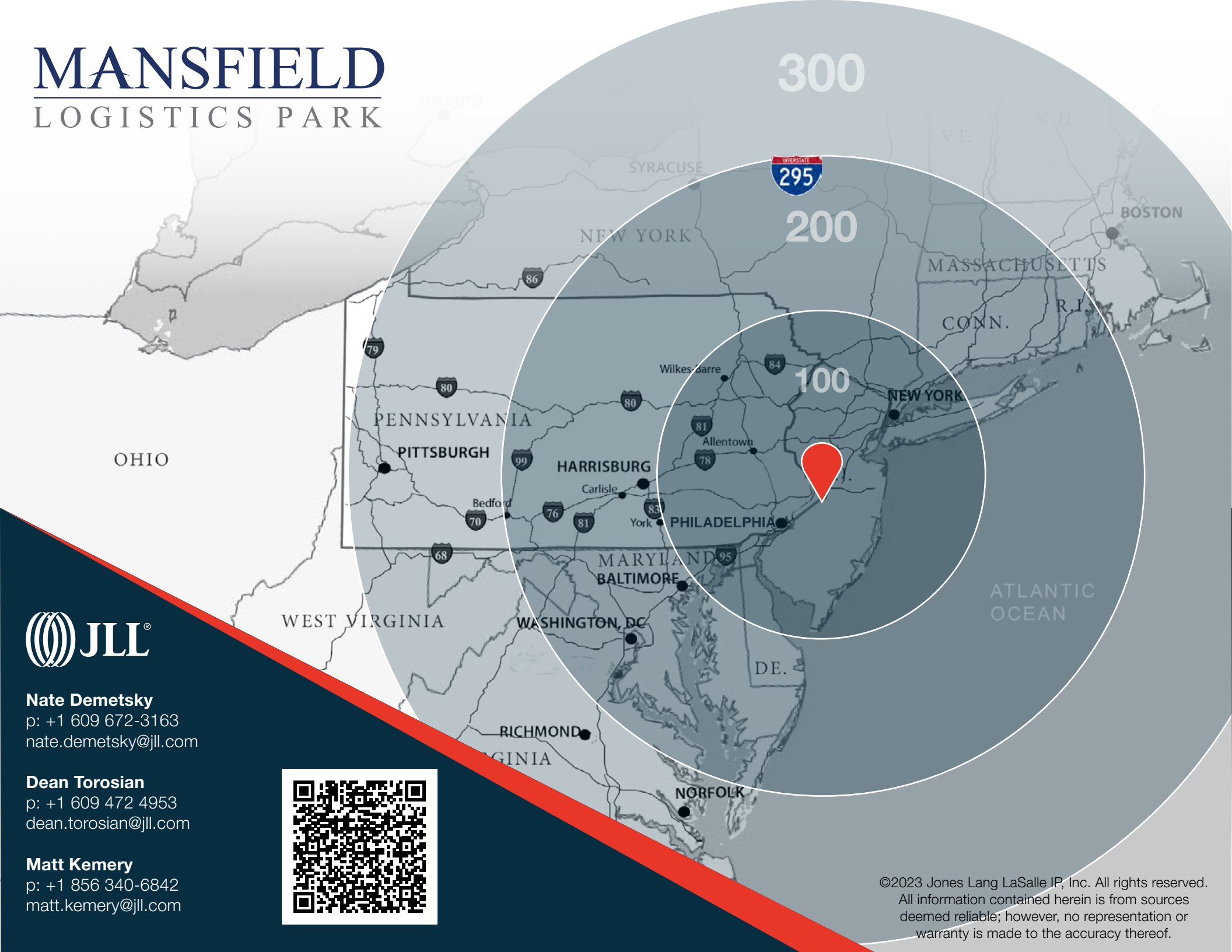
*2023 STATS WITHIN A
10 MILE RADIUS

PROJECT HIGHLIGHTS

- Long term PILOT
- Immediate access to Interstate 295 at Exit 52 and proximate connectivity to the NJ & PA Turnpikes + US 130.
- Local/dense availability of labor.
- Best in class project design features.
- Institutional/professional joint-venture partnership with long-term commitment to ownership in Central New Jersey.

MANSFIELD

LOGISTICS PARK

**Nate Demetsky**

p: +1 609 672-3163
nate.demetsky@jll.com

Dean Torosian

p: +1 609 472 4953
dean.torosian@jll.com

Matt Kemery

p: +1 856 340-6842
matt.kemery@jll.com



©2023 Jones Lang LaSalle IP, Inc. All rights reserved.
All information contained herein is from sources
deemed reliable; however, no representation or
warranty is made to the accuracy thereof.