



For Lease

Jared Zebe

+1 208 709 7311
jared.zebe@colliers.com

Mike Zebe

+1 208 705 6453
mike.zebe@colliers.com

Don Zebe

+1 208 403 1973
don.zebe@colliers.com

2043 E Center Street
Pocatello, Idaho 83201
+1 208 951 2100
colliers.com/idaho

Vista Office

122 Vista Drive | Pocatello, ID 83201

Highlights:

- Five private offices
- One conference room or additional office
- Breakroom
- Large bullpen area
- 2 ADA restrooms
- (1) Large IT and (1) Storage room
- Convenient location near I-15, restaurants, hotels, and professional offices
- Professional office/medical co-tenants

For Lease

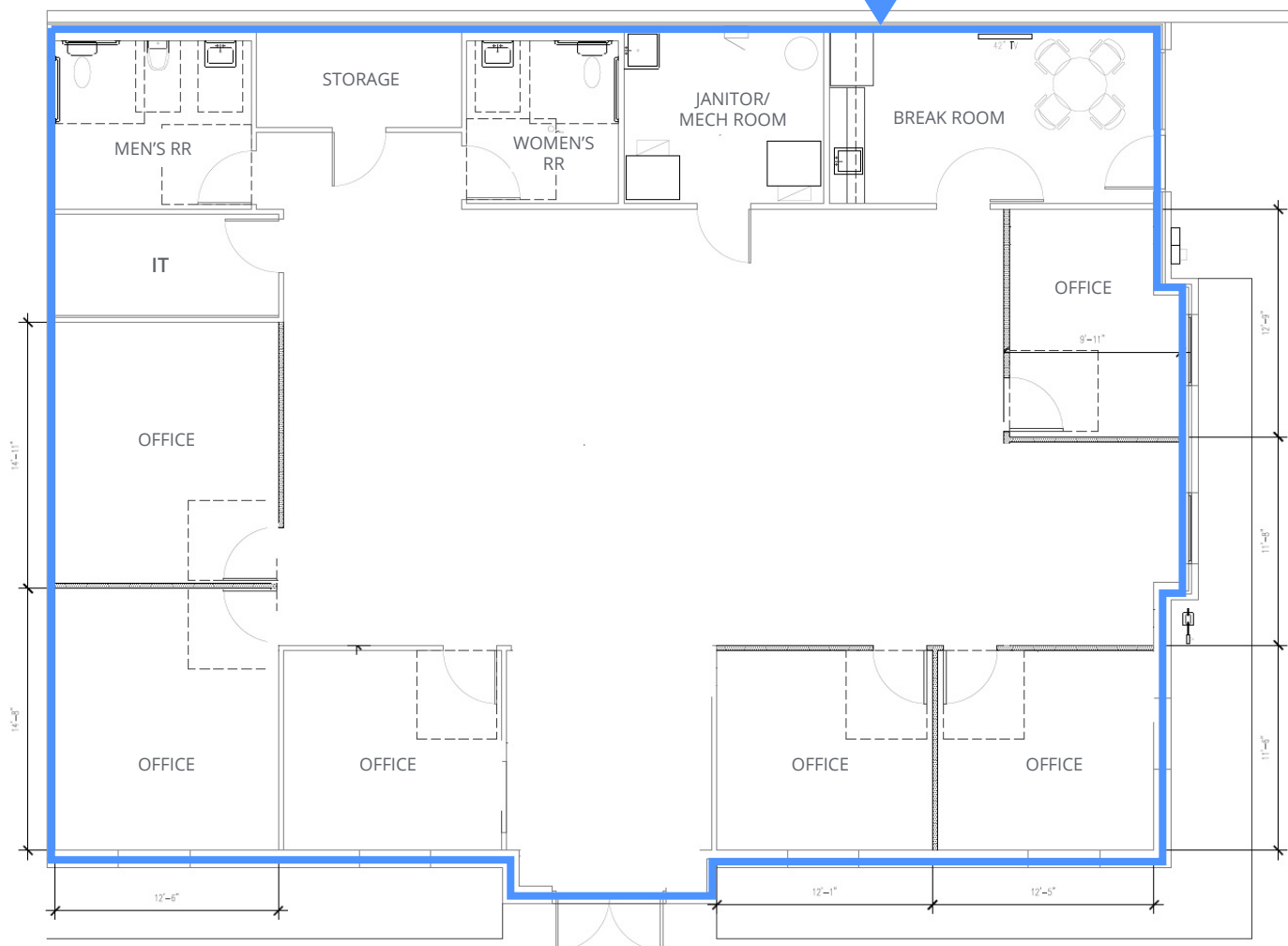
Property Information

Property Type	Professional Office
Available SF	3,064 SF
Land size	0.24 Acres
Parking	15 Dedicated spaces

Lease Type	NNN
Lease Rate	Contact agents
Property Access	Contact agents

Floor Plan

Available | 3,064 SF

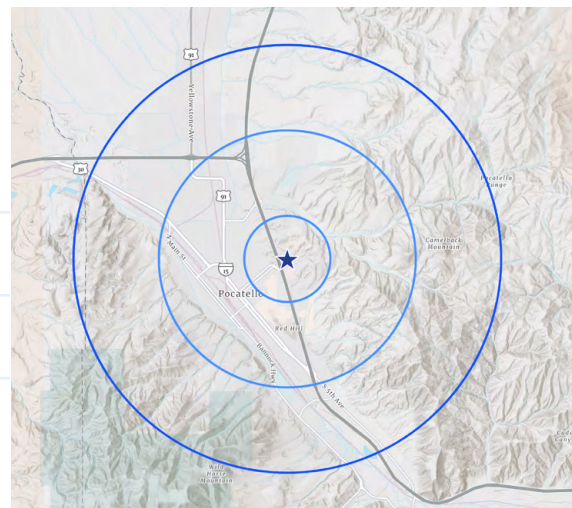


Location

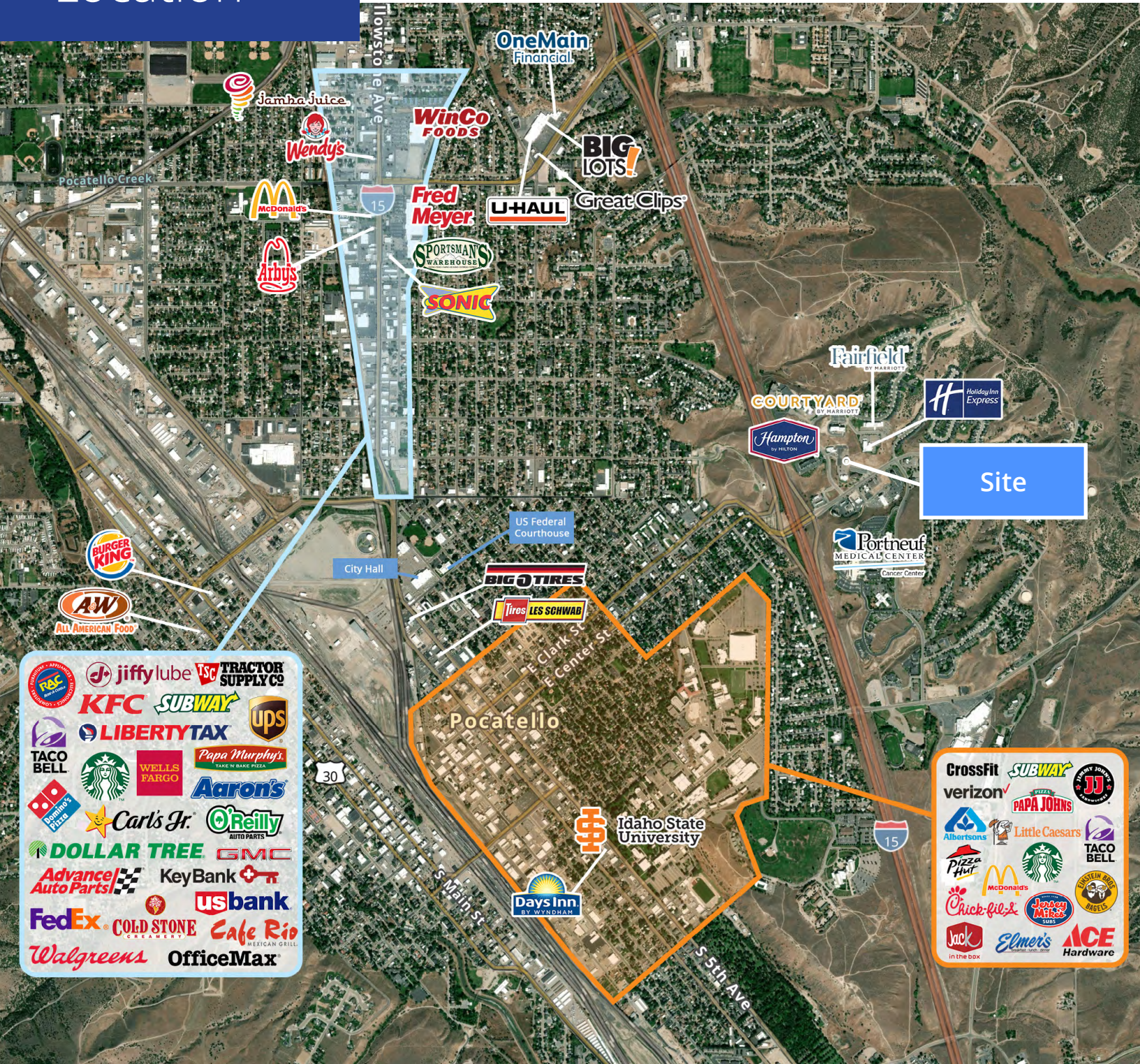


Demographics

2025	1 MILE	3 MILES	5 MILES
Est. Population	8,841	50,323	76,883
Est. Households	3,376	19,489	29,424
Avg. HH Income	\$97,877	\$87,070	\$89,551



Location





2043 E Center Street
 Pocatello, Idaho 83201
 +1 208 951 2100
 colliers.com/idaho

This document has been prepared by Colliers for advertising and general information only. Colliers makes no guarantees, representations or warranties of any kind, expressed or implied, regarding the information including, but not limited to, warranties of content, accuracy and reliability. Any interested party should undertake their own inquiries as to the accuracy of the information. Colliers excludes unequivocally all inferred or implied terms, conditions and warranties arising out of this document and excludes all liability for loss and damages arising there from. This publication is the copyrighted property of Colliers and/or its licensor(s). © 2026. All rights reserved. This communication is not intended to cause or induce breach of an existing listing agreement. Colliers Portneuf Valley, LLC.