



RETAIL SPACE AVAILABLE

The Plaza at Centerstone is an upscale retail and lifestyle center like none other in Conway. With an outdoor courtyard and water feature welcoming you as you enter, this prime location offers exciting opportunities within the thriving and rapidly growing Centerstone community—making it the perfect place for your business to flourish.

✓ Phase IV Availability

Adjacent suites can be combined.
Leasing fee available.

12 Suites | 16,800 SF

Level 1 ■ \$22-\$25/ft, NNN, \$30/ft T.I. Allowance


Level 2 ■ 19/ft, NNN, \$30/ft T.I. Allowance

Why Choose us?

- Maximum Visibility & Access Location
- Rapidly Expanding Residential & Retail
- Across The Street From UCA
- Easy Access To I-40
- 750+ Apartments Within Walking Distance

Conway, AR
Demographics

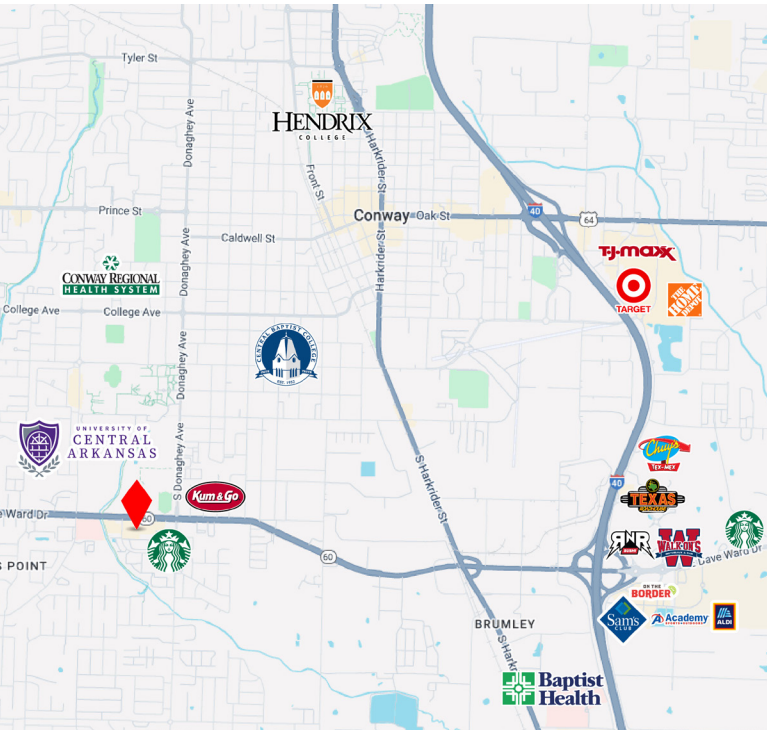
 Population
73,068

 Avg. HH Income
\$83,756

Dave Ward Dr.
Traffic Count
35,000+

the plaza at CENTERSTONE

2235 Dave Ward Dr,
Conway, AR

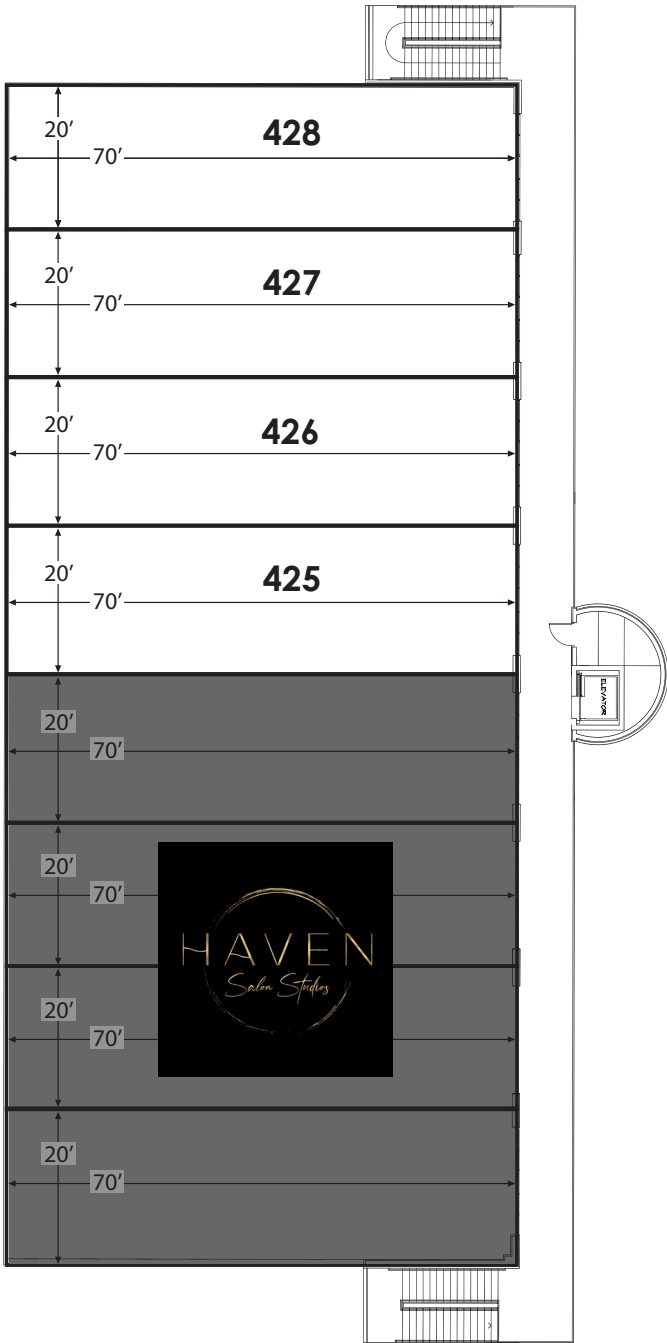


Phase IV

12 Suites
16,800 SF

Key Features

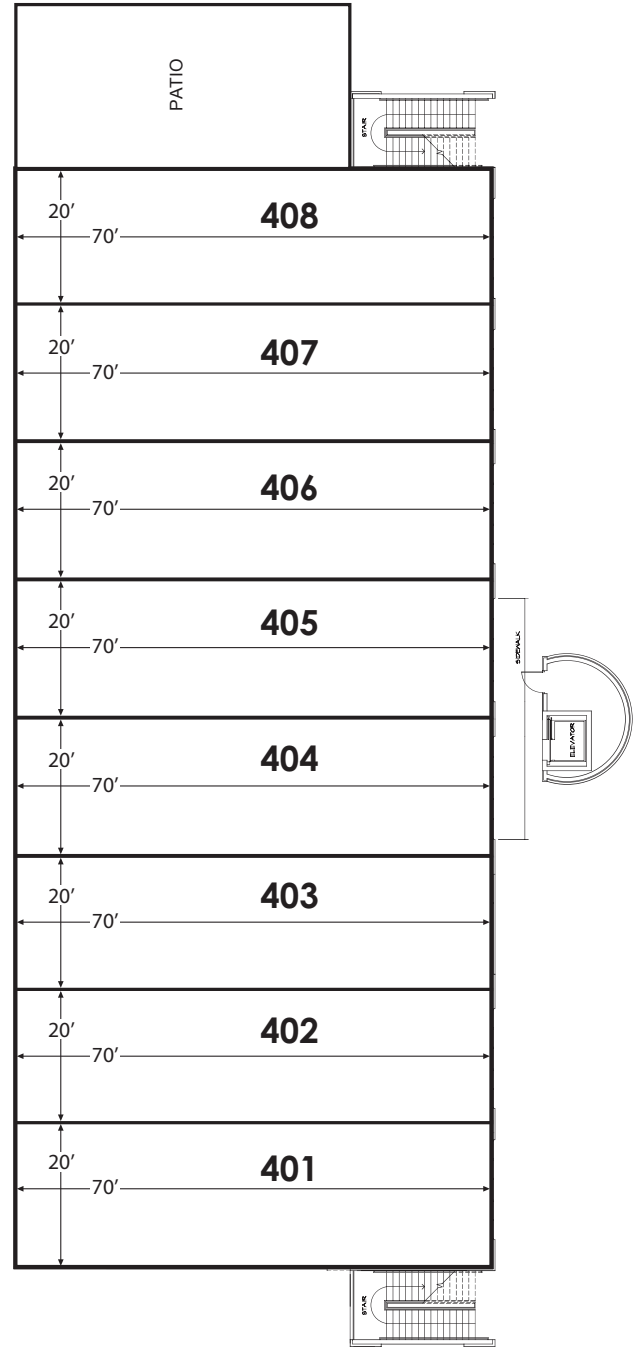
- Inviting Patio Space Available
- Convenient Elevator Access
- Courtyard Fountain Feature
- Near Major Intersection
- Ample On-site Parking



Phase IV Upper Level Layout

Each bay is 1,400 SF

Bays can be combined



Phase IV Lower Level Layout

Each bay is 1,400 SF

Bays can be combined