



# SOUTH PARK GROUP

[www.southparkgroup.com](http://www.southparkgroup.com)



## FOR LEASE

### SECOND FLOOR CREATIVE OFFICE

8255 Beverly Blvd., Suite 217

Los Angeles, California 90048

Charming 2-story building with center courtyard. Creative office space with high ceilings, excellent light and window line. Highly creative environment with 24 hour access. Close to the Beverly Center and Beverly Connection.

#### **JACK RAVAN**

Tel. 323.782.1270

E. [jackravan@southparkgroup.com](mailto:jackravan@southparkgroup.com)

No. 00890189

#### **AVAILABLE SPACE**

**Size:** Approximately 1,500 rentable sqft

**Rate:** \$3.50 per sqft, Modified Gross

**Parking:** Ample parking in rear lot

SOUTH PARK GROUP | 8322 Beverly Blvd., Suite 301 | Los Angeles, CA 90048

This information has been furnished by sources that we deem reliable, but for which we assume no liability. The information contained herein is given, in confidence, with the understanding that all negotiations pertaining to this property be handled through the submitting office. All measurements are approximate.

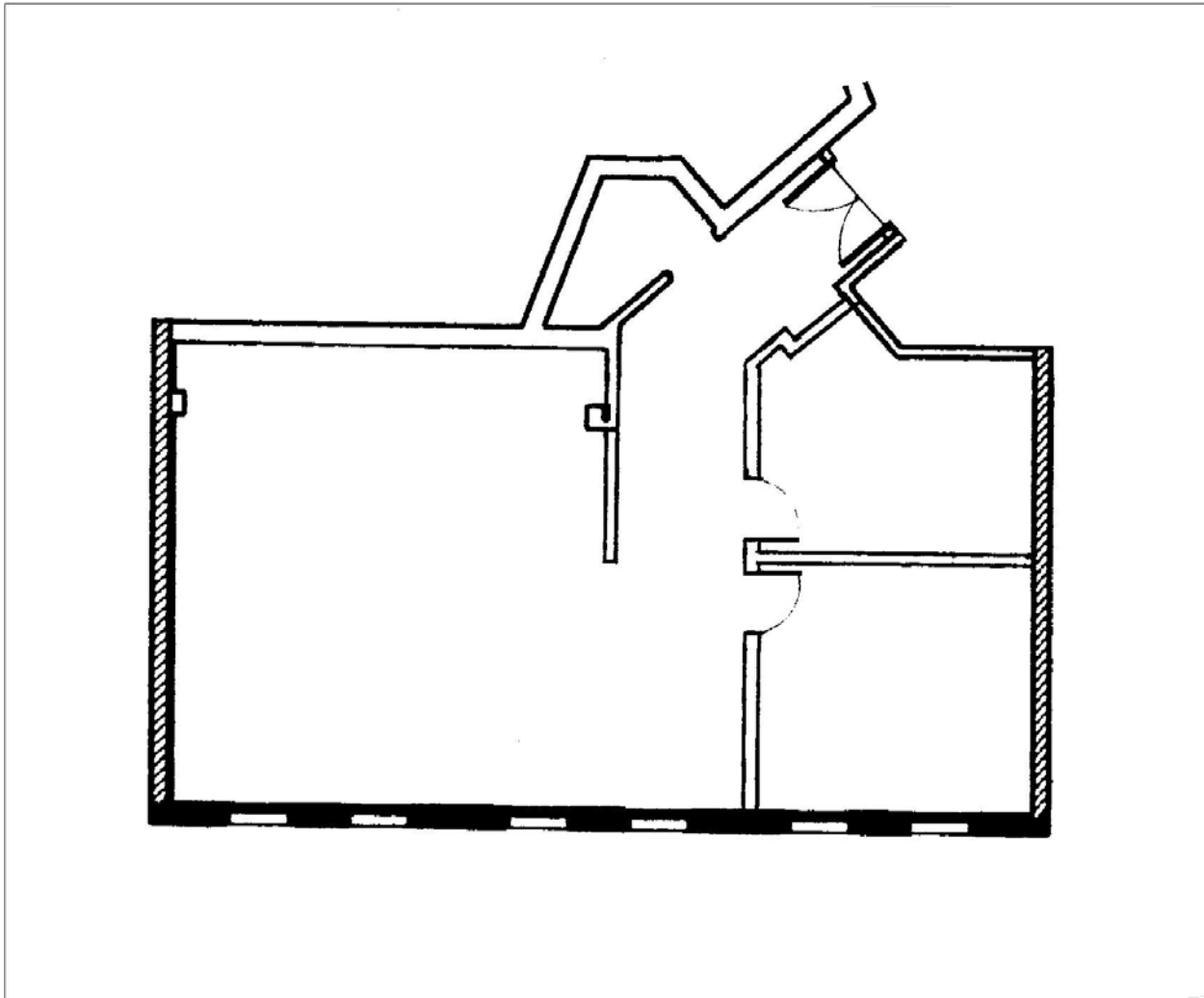


# SOUTH PARK GROUP

[www.southparkgroup.com](http://www.southparkgroup.com)

## FLOOR PLAN

8255 Beverly Blvd., Suite 217, Los Angeles, California 90048



Not Drawn to Scale

**SOUTH PARK GROUP | 8322 Beverly Blvd., Suite 301 | Los Angeles, CA 90048**

This information has been furnished by sources that we deem reliable, but for which we assume no liability. The information contained herein is given, in confidence, with the understanding that all negotiations pertaining to this property be handled through the submitting office. All measurements are approximate.

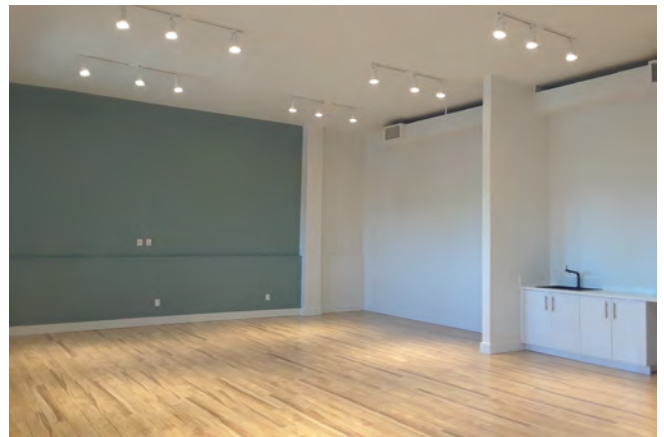
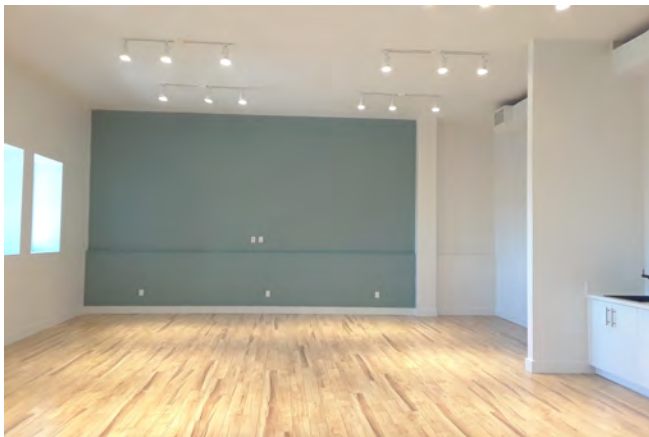


# SOUTH PARK GROUP

[www.southparkgroup.com](http://www.southparkgroup.com)

## FOR LEASE

8255 Beverly Blvd., Suite 217, Los Angeles, California 90048



**SOUTH PARK GROUP | 8322 Beverly Blvd., Suite 301 | Los Angeles, CA 90048**

This information has been furnished by sources that we deem reliable, but for which we assume no liability. The information contained herein is given, in confidence, with the understanding that all negotiations pertaining to this property be handled through the submitting office. All measurements are approximate.