

4919 WOODALL
FOR SALE OR LEASE

FOR SALE OR LEASE

Strategically located at the gateway between the East Brookhollow and Dallas Design District/North Trinity submarkets, **4919 WOODALL** is a stand-alone, 50,508 square foot light industrial project of choice for logistics, showroom, distribution, manufacturing, and ecommerce players. As one of the best infill locations in the DFW industrial market, Woodall is located three miles from the Design District, four miles from Dallas Love Field, and five miles from Downtown Dallas, making it an ideal last mile location that can easily access the city's most affluent and densely populated areas.

The stand-alone building's heavy power, parking and storage optionality, and central location will allow it to attract a discerning 50,500 SF user or buyer. Welcome to Woodall!



M2GVENTURES

4919 WOODALL

PROJECT ATTRIBUTES

Stand-alone 50,508 SF building

3/1000 Parking

Centrally Located Near Love Field

14' - 24' Clear Height; 24' Clear in
Main Loading Area

Sprinklered

Ability to have HVAC

Power - 800 AMPS, 480 Volt,
Three-phase power

Front Loading with 5 Dock
High Doors

Opportunity for Industrial Outside
Storage and/or additional parking

PROJECT IMPROVEMENTS

Major Capital Improvements

Enhanced Landscaping

Fresh Interior and Exterior Paint

New Roof and Skylights

Exterior and Interior LED Lighting

5,000 SF Enhanced Office Space



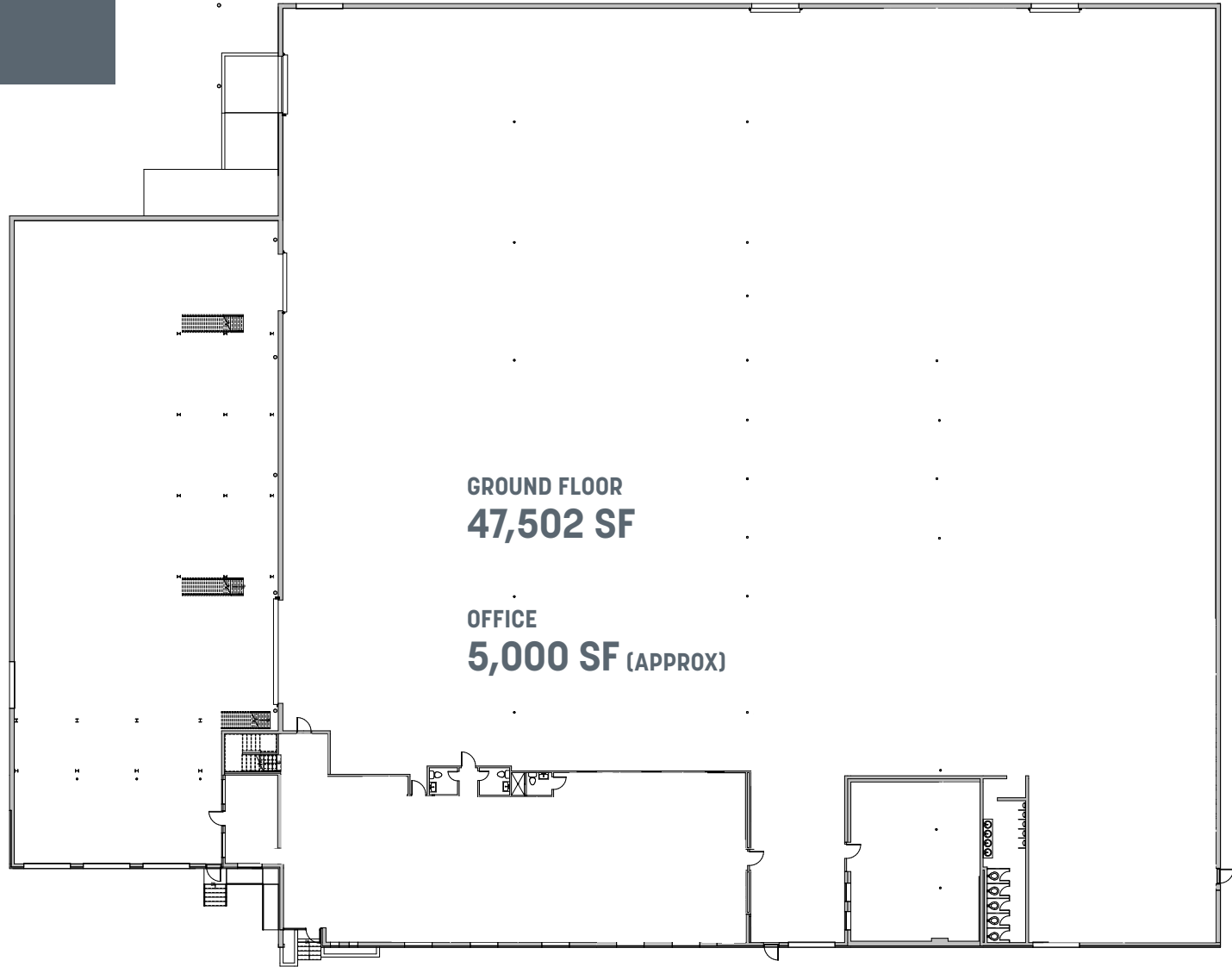
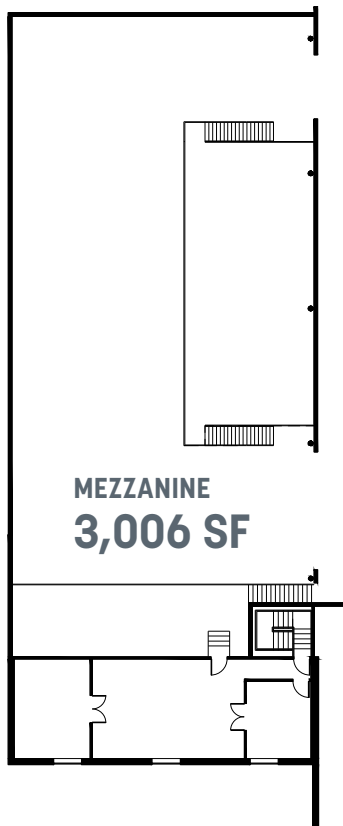
M2GVENTURES



4919 WOODALL \ OFFICE SPACE

50,508 SF TOTAL

**STAND-ALONE BUILDING
FOR LEASE OR SALE**



4919 WOODALL



SARAH OZANNE

214.766.8138

sarah.ozanne@streamrealty.com

LENA THOMAS

214.733.6787

lena.thomas@streamrealty.com

THE INFORMATION CONTAINED HEREIN HAS BEEN GIVEN TO US BY THE OWNER OF THE PROPERTY OR OTHER SOURCES WE DEEM RELIABLE. WE HAVE NO REASON TO DOUBT ITS ACCURACY, BUT WE DO NOT GUARANTEE IT. ALL INFORMATION SHOULD BE VERIFIED PRIOR TO PURCHASE OR LEASE.



M2G VENTURES