



Oaks Medical Center

400 & 450 Cresson Boulevard
Oaks, PA 19460

Available Space

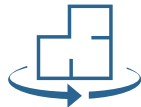
400 Cresson Boulevard

- [Suite 100: 2,960 RSF](#)
- [Suite 106: 959 RSF](#)
- Suite 110: 1,825 RSF
- Suite 208: 1,384 RSF
- [Suite 210: 4,431 RSF](#)
- [Suite 300: 2,192 RSF](#)

450 Cresson Boulevard

- [Suite 100: 5,701 RSF](#)
- [Suite 210: 4,048 RSF](#)

Virtual Tour



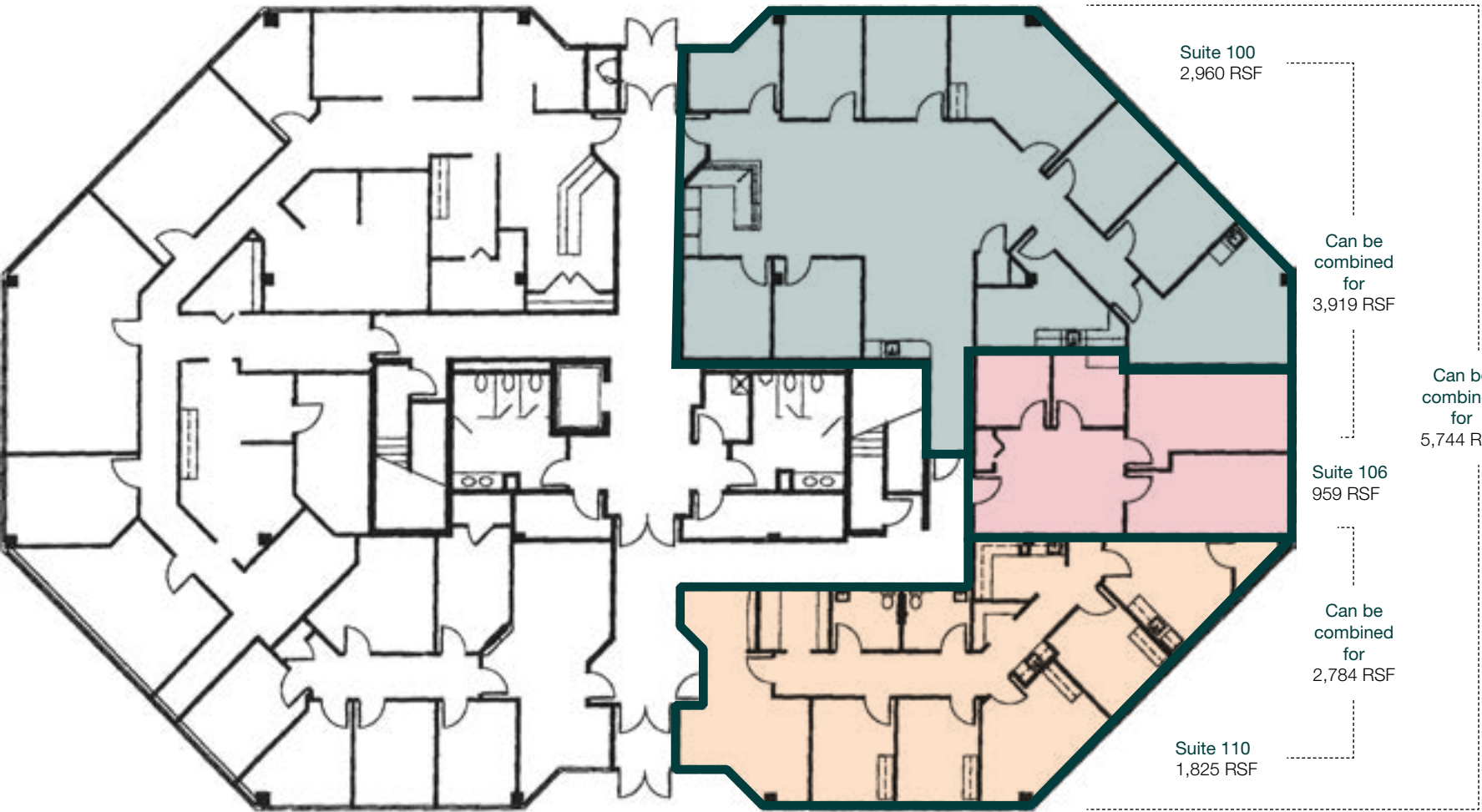
Click any link
for a virtual tour.

Property Highlights

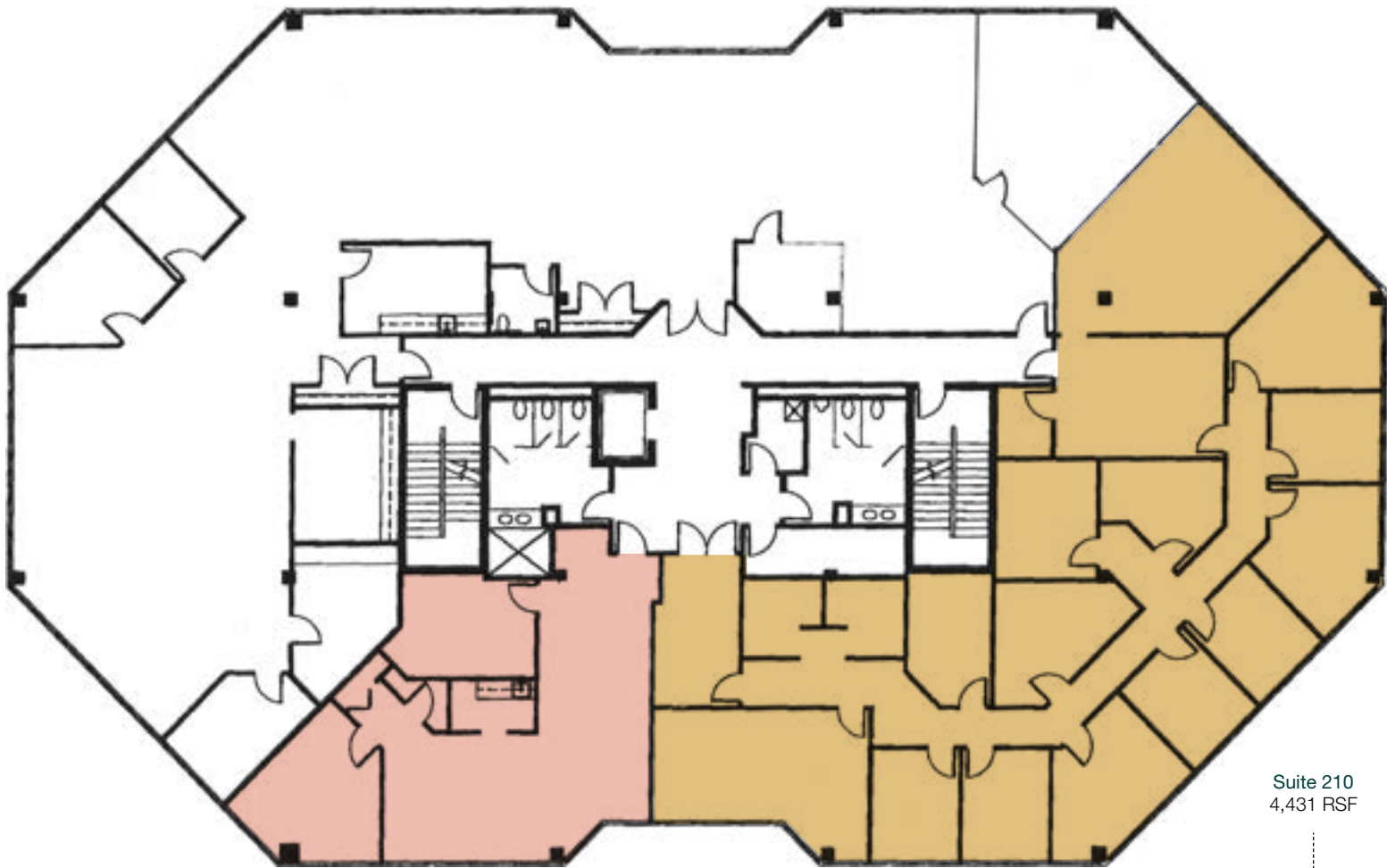
- Class "A" medical office building
- Full medical fitouts available
- Well capitalized ownership
- Visible from Route 422 with average daily vehicle count of 267,608
- Immediate access to Route 422, minutes from PA Turnpike and I-76
- Less than 15 minutes from King of Prussia Mall and Providence Town Center
- Ample Parking
- Prominent signage on Route 422



First Floor Plan



Second Floor Plan



Suite 210
1,384 RSF

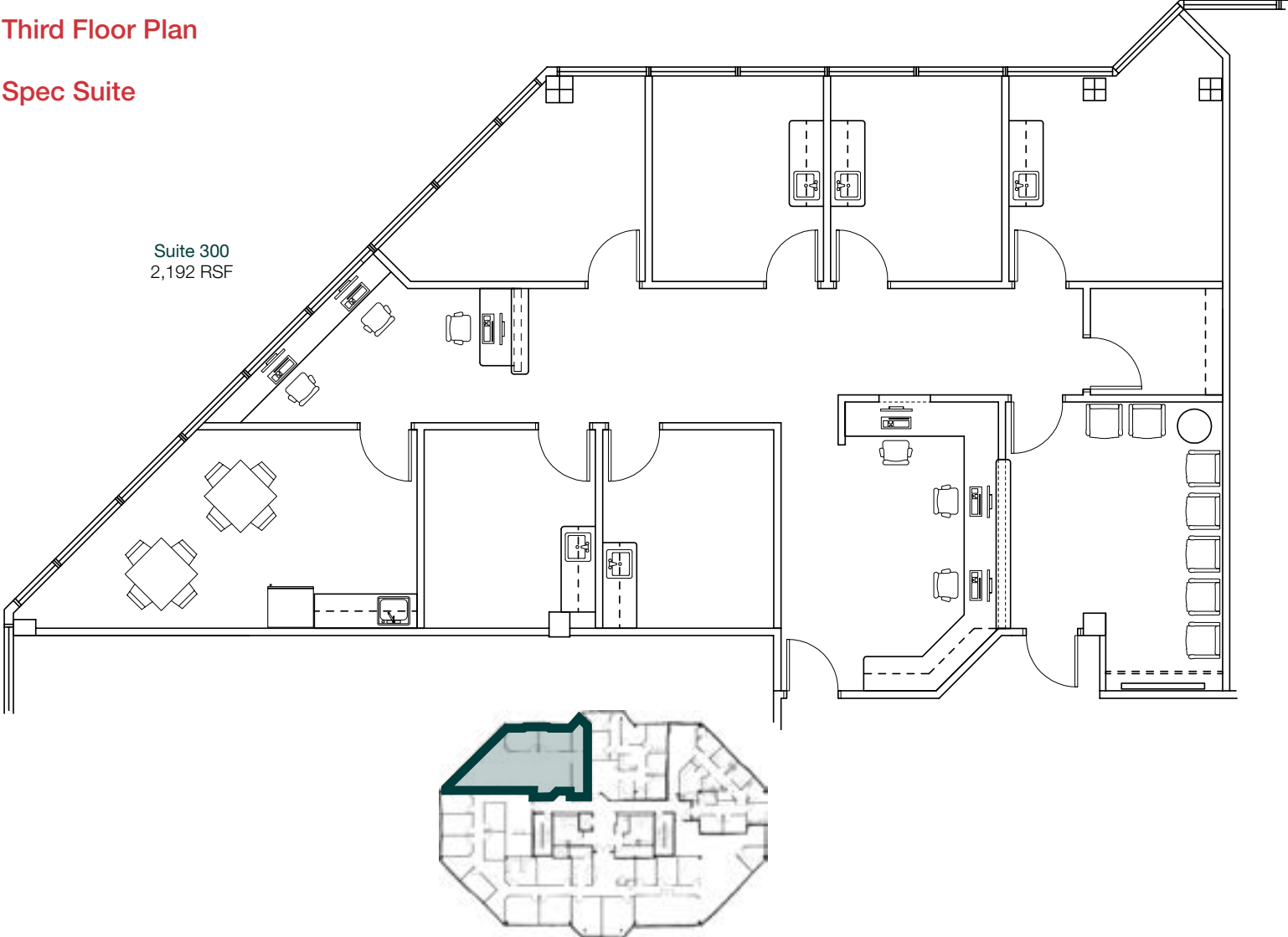
Can be combined for
5,811 RSF

Suite 210
4,431 RSF

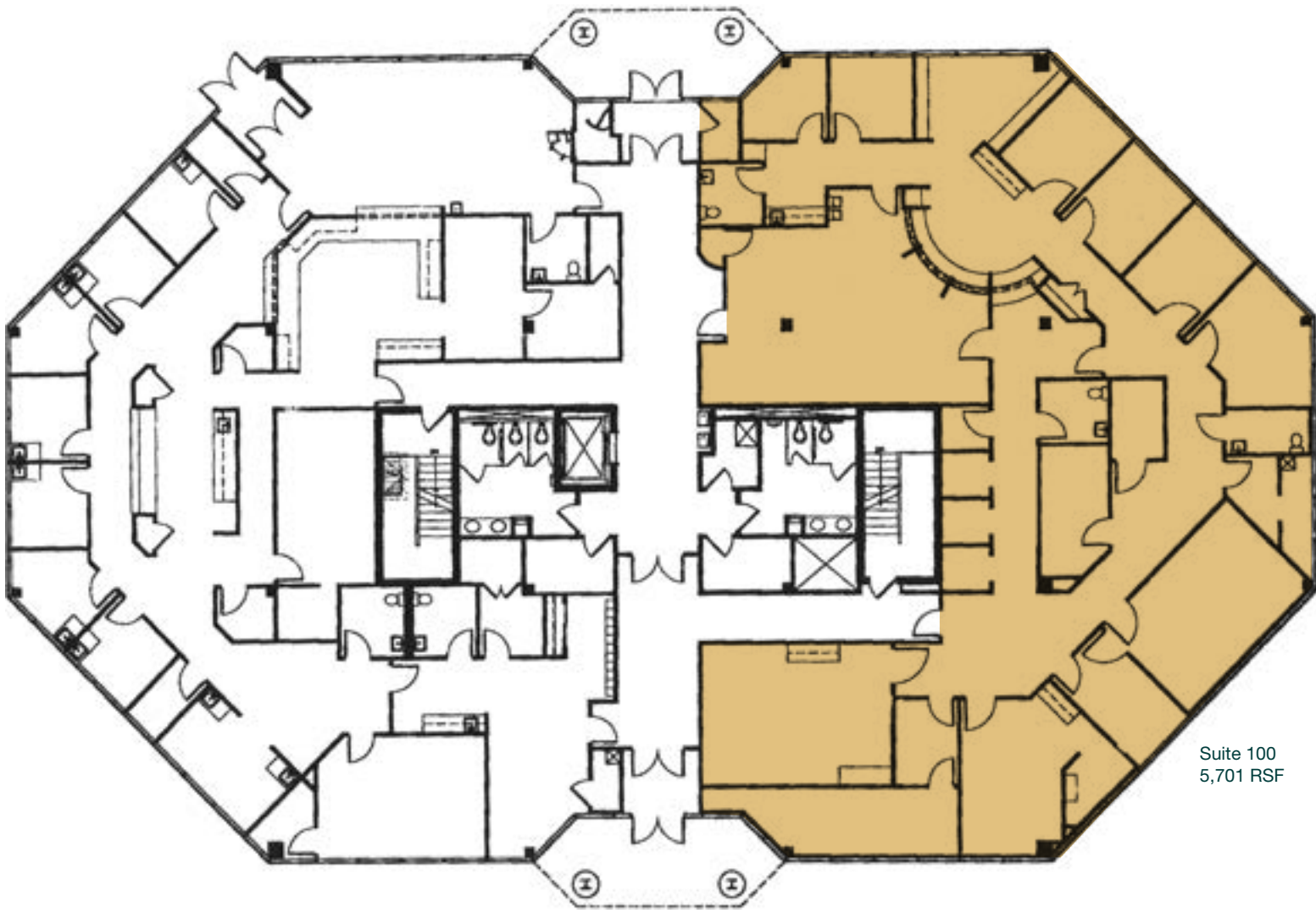
Third Floor Plan

Spec Suite

Suite 300
2,192 RSF

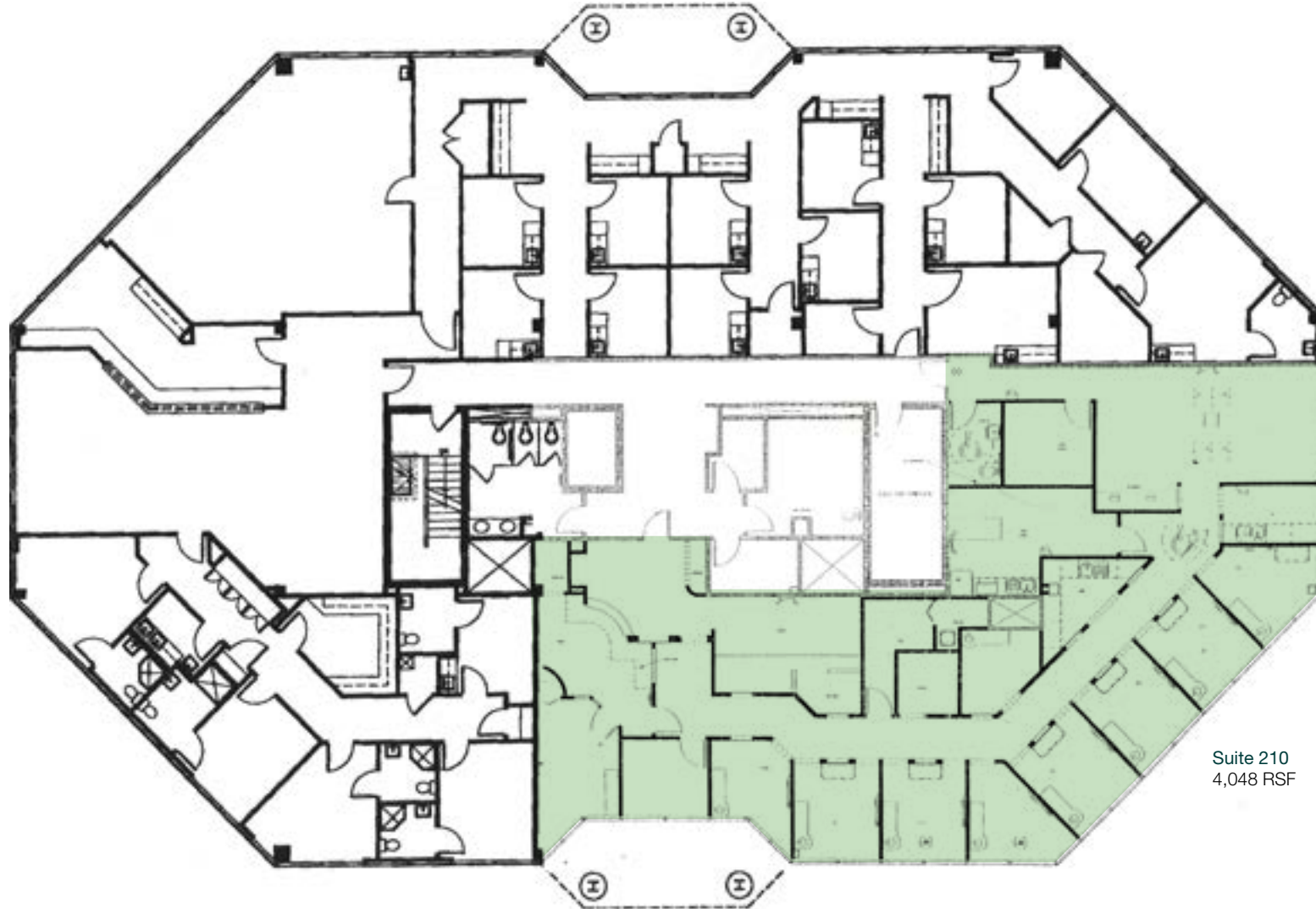


First Floor Plan



Suite 100
5,701 RSF

Second Floor Plan



Suite 210
4,048 RSF

Nearby Amenities

- Buffalo Wild Wings
- Starbucks
- Wendy's
- WSFS Bank
- Jersey Mike's Subs
- Moe's Southwest Grill
- Tropical Smoothie Cafe
- Hand and Stone Massage and Facial Spa
- Oaks Nails Spa
- Supercuts
- Oaks Italian Deli
- UNO Pizzeria & Grill
- Ardent Credit Union
- Dunkin'
- Bob Evans

