

RETAIL SPACES FOR LEASE

TWO SPACES AVAILABLE IN PROMENADE SHOPPING CENTER

200 MIDDLE NECK RD. GREAT NECK.



 **Douglas Elliman**
Commercial

For More Information:

Rozita Soomekh- Results Powered by Rozita

Licensed Associate Real Estate Broker
Douglas Elliman Commercial - Long Island
516.498.2152
rozita.soomekh@elliman.com

 **THE ROZITA SOOMEKH TEAM**
at Douglas Elliman
Real Estate

WWW.ELLIMANCOMMERCIAL.COM

THE PROPERTY CONTAINED WITHIN THIS DOCUMENT IS BEING EXCLUSIVELY REPRESENTED BY DOUGLAS ELLIMAN REAL ESTATE COMMERCIAL DIVISION, 650 SMITHTOWN BYPASS STE. 117 SMITHTOWN, NY 11787 631 868-2405 © 2023 DOUGLAS ELLIMAN COMMERCIAL OF LI, LLC. ALL MATERIAL PRESENTED HEREIN IS INTENDED FOR INFORMATION PURPOSES ONLY. WHILE THIS INFORMATION IS BELIEVED TO BE CORRECT, IT IS REPRESENTED SUBJECT TO ERRORS, OMISSIONS, CHANGES OR WITHDRAWAL WITHOUT NOTICE. ALL PROPERTY INFORMATION, INCLUDING, BUT NOT LIMITED TO SQUARE FOOTAGE, ROOM COUNT, ZONING IN THE LISTING SHOULD BE VERIFIED BY YOUR OWN ATTORNEY, ARCHITECT OR ZONING EXPERT. IF YOUR PROPERTY IS CURRENTLY LISTED WITH ANOTHER REAL ESTATE BROKER, PLEASE DISREGARD THIS OFFER. IT IS NOT OUR INTENTION TO SOLICIT THE OFFERINGS OF OTHER REAL ESTATE BROKERS. WE COOPERATE WITH THEM FULLY. EQUAL HOUSING OPPORTUNITY.



Retail Space For Lease

200 Middle Neck Rd Great Neck, NY 11021



Offering Summary

Available SF:	2,400 - 4,000 SF
Renovated:	2005
Property Size:	29,907 SF
Frontage:	360 SF
Land Area:	2:00 AC
Parking Ratio:	4.00/1,000 SF
Parking Surface:	120
Parking Covered:	50

Property Overview

WELCOME TO PROMENADE SHOPPING CENTER

This building offers elevator access from the parking lot, covered parking, and handicap accessibility for convenience and ease of use.

Unit 1:

Formerly Laffey Real Estate, this approximately 2,400 SF retail space is ideal for professional use. The rectangular layout with high ceilings features a welcoming reception area, kitchenette, two private glass-walled rooms, and an open space prepared for cubicle setup.

Unit 2:

Formerly a Medical Spa, this approximately 4,000 SF space is newly renovated with high ceilings and large frontage on Middle Neck Rd. It features a spacious open reception area, two exam rooms, multiple offices, and two multi-unit bathrooms.

For More Information:

[Rozita Soomekh- Results Powered by Rozita](#)

Licensed Associate Real Estate Broker
Douglas Elliman Commercial - Long Island
516.498.2152
rozita.soomekh@elliman.com



WWW.ELLIMANCOMMERCIAL.COM

THE PROPERTY CONTAINED WITHIN THIS DOCUMENT IS BEING EXCLUSIVELY REPRESENTED BY DOUGLAS ELLIMAN REAL ESTATE COMMERCIAL DIVISION, 550 SMITHTOWN BYPASS STE. 117 SMITHTOWN, NY 11787 631.858.2405 © 2023 DOUGLAS ELLIMAN COMMERCIAL OF LI, L.L.C. ALL MATERIAL PRESENTED HEREIN IS INTENDED FOR INFORMATION PURPOSES ONLY. WHILE THIS INFORMATION IS BELIEVED TO BE CORRECT, IT IS REPRESENTED SUBJECT TO ERRORS, OMISSIONS, CHANGES OR WITHDRAWAL WITHOUT NOTICE. ALL PROPERTY INFORMATION, INCLUDING, BUT NOT LIMITED TO SQUARE FOOTAGE, ROOM COUNT, ZONING IN THE LISTING SHOULD BE VERIFIED BY YOUR OWN ATTORNEY, ARCHITECT OR ZONING EXPERT. IF YOUR PROPERTY IS CURRENTLY LISTED WITH ANOTHER REAL ESTATE BROKER, PLEASE DISREGARD THIS OFFER. IT IS NOT OUR INTENTION TO SOLICIT THE OFFERINGS OF OTHER REAL ESTATE BROKERS. WE COOPERATE WITH THEM FULLY. EQUAL HOUSING OPPORTUNITY.



Retail Space For Lease

200 Middle Neck Rd Great Neck, NY 11021



Available Spaces

Suite	Tenant	Size (SF)	Lease Type	Lease Rate	Description
200 Middle Neck Rd- Unit 1	Available	2,400 SF	Modified Gross	\$6,900 per month	-
200 Middle Neck Rd, - Unit 2	Available	4,000 SF	Modified Gross	\$9,000 per month	-

For More Information:

Rozita Soomekh- Results Powered by Rozita

Licensed Associate Real Estate Broker
Douglas Elliman Commercial - Long Island
516.498.2152
rozita.soomekh@elliman.com



WWW.ELLIMANCOMMERCIAL.COM

THE PROPERTY CONTAINED WITHIN THIS DOCUMENT IS BEING EXCLUSIVELY REPRESENTED BY DOUGLAS ELLIMAN REAL ESTATE COMMERCIAL DIVISION, 550 SMITHTOWN BYPASS STE. 117 SMITHTOWN, NY 11787 631.858.2405 © 2023 DOUGLAS ELLIMAN COMMERCIAL OF LI, LLC. ALL MATERIAL PRESENTED HEREIN IS INTENDED FOR INFORMATION PURPOSES ONLY. WHILE THIS INFORMATION IS BELIEVED TO BE CORRECT, IT IS REPRESENTED SUBJECT TO ERRORS, OMISSIONS, CHANGES OR WITHDRAWAL WITHOUT NOTICE. ALL PROPERTY INFORMATION, INCLUDING, BUT NOT LIMITED TO SQUARE FOOTAGE, ROOM COUNT, ZONING IN THE LISTING SHOULD BE VERIFIED BY YOUR OWN ATTORNEY, ARCHITECT OR ZONING EXPERT. IF YOUR PROPERTY IS CURRENTLY LISTED WITH ANOTHER REAL ESTATE BROKER, PLEASE DISREGARD THIS OFFER. IT IS NOT OUR INTENTION TO SOLICIT THE OFFERINGS OF OTHER REAL ESTATE BROKERS. WE COOPERATE WITH THEM FULLY. EQUAL HOUSING OPPORTUNITY.



Retail Space For Lease Unit # 1

Approx. 2,400 S.F

\$6,900/ Monthly



For More Information:

Rozita Soomekh- Results Powered by Rozita

Licensed Associate Real Estate Broker
Douglas Elliman Commercial - Long Island
516.498.2152
rozita.soomekh@elliman.com

 **DouglasElliman**
Commercial

 **THE ROZITA SOOMEKH TEAM**

WWW.ELLIMANCOMMERCIAL.COM

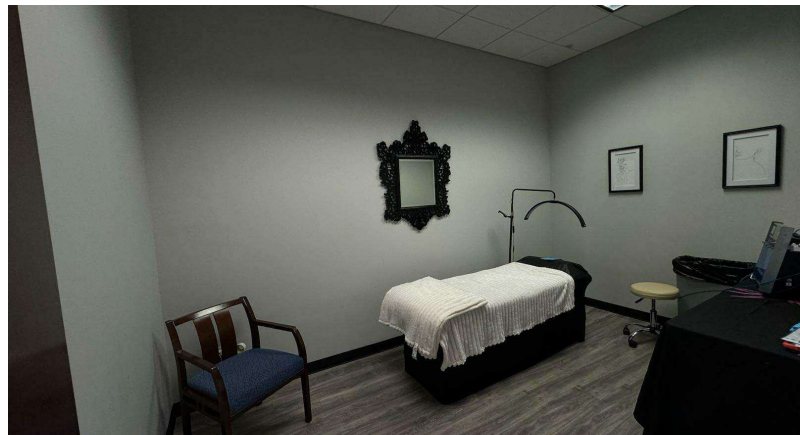
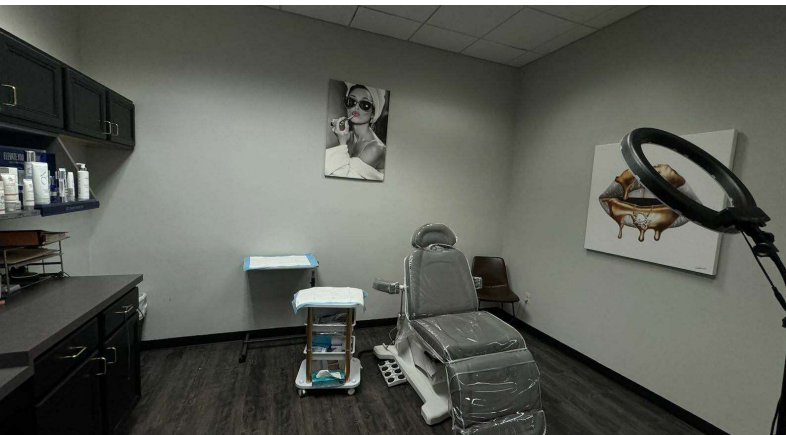
THE PROPERTY CONTAINED WITHIN THIS DOCUMENT IS BEING EXCLUSIVELY REPRESENTED BY DOUGLAS ELLIMAN REAL ESTATE COMMERCIAL DIVISION, 550 SMITHTOWN BYPASS STE. 117 SMITHTOWN, NY 11787 631.858.2405 © 2023 DOUGLAS ELLIMAN COMMERCIAL OF LI, LLC. ALL MATERIAL PRESENTED HEREIN IS INTENDED FOR INFORMATION PURPOSES ONLY. WHILE THIS INFORMATION IS BELIEVED TO BE CORRECT, IT IS REPRESENTED SUBJECT TO ERRORS, OMISSIONS, CHANGES OR WITHDRAWAL WITHOUT NOTICE. ALL PROPERTY INFORMATION, INCLUDING, BUT NOT LIMITED TO SQUARE FOOTAGE, ROOM COUNT, ZONING IN THE LISTING SHOULD BE VERIFIED BY YOUR OWN ATTORNEY, ARCHITECT OR ZONING EXPERT. IF YOUR PROPERTY IS CURRENTLY LISTED WITH ANOTHER REAL ESTATE BROKER, PLEASE DISREGARD THIS OFFER. IT IS NOT OUR INTENTION TO SOLICIT THE OFFERINGS OF OTHER REAL ESTATE BROKERS. WE COOPERATE WITH THEM FULLY. EQUAL HOUSING OPPORTUNITY.



Retail Space For Lease Unit # 2

Approx. 4,000 S.F

\$9,000 / Monthly



For More Information:

Rozita Soomekh- Results Powered by Rozita

Licensed Associate Real Estate Broker
Douglas Elliman Commercial - Long Island
516.498.2152
rozita.soomekh@elliman.com

 **DouglasElliman**
Commercial

 **THE ROZITA SOOMEKH TEAM**

WWW.ELLIMANCOMMERCIAL.COM

THE PROPERTY CONTAINED WITHIN THIS DOCUMENT IS BEING EXCLUSIVELY REPRESENTED BY DOUGLAS ELLIMAN REAL ESTATE COMMERCIAL DIVISION, 550 SMITHTOWN BYPASS STE. 117 SMITH-TOWN, NY 11787 631.858.2405 © 2023 DOUGLAS ELLIMAN COMMERCIAL OF LI, LLC. ALL MATERIAL PRESENTED HEREIN IS INTENDED FOR INFORMATION PURPOSES ONLY. WHILE THIS INFORMATION IS BELIEVED TO BE CORRECT, IT IS REPRESENTED SUBJECT TO ERRORS, OMISSIONS, CHANGES OR WITHDRAWAL WITHOUT NOTICE. ALL PROPERTY INFORMATION, INCLUDING, BUT NOT LIMITED TO SQUARE FOOTAGE, ROOM COUNT, ZONING IN THE LISTING SHOULD BE VERIFIED BY YOUR OWN ATTORNEY, ARCHITECT OR ZONING EXPERT. IF YOUR PROPERTY IS CURRENTLY LISTED WITH ANOTHER REAL ESTATE BROKER, PLEASE DISREGARD THIS OFFER. IT IS NOT OUR INTENTION TO SOLICIT THE OFFERINGS OF OTHER REAL ESTATE BROKERS. WE COOPERATE WITH THEM FULLY. EQUAL HOUSING OPPORTUNITY.



Retail Space For Lease

200 Middle Neck Rd Great Neck, NY 11021



For More Information:

Rozita Soomekh- Results Powered by Rozita

Licensed Associate Real Estate Broker
Douglas Elliman Commercial - Long Island
516.498.2152
rozita.soomekh@elliman.com

Douglas Elliman
Commercial



WWW.ELLIMANCOMMERCIAL.COM

THE PROPERTY CONTAINED WITHIN THIS DOCUMENT IS BEING EXCLUSIVELY REPRESENTED BY DOUGLAS ELLIMAN REAL ESTATE COMMERCIAL DIVISION, 550 SMITHTOWN BYPASS STE. 117 SMITHTOWN, NY 11787 631.858.2405 © 2023 DOUGLAS ELLIMAN COMMERCIAL OF LI, LLC. ALL MATERIAL PRESENTED HEREIN IS INTENDED FOR INFORMATION PURPOSES ONLY. WHILE THIS INFORMATION IS BELIEVED TO BE CORRECT, IT IS REPRESENTED SUBJECT TO ERRORS, OMISSIONS, CHANGES OR WITHDRAWAL WITHOUT NOTICE. ALL PROPERTY INFORMATION, INCLUDING, BUT NOT LIMITED TO SQUARE FOOTAGE, ROOM COUNT, ZONING IN THE LISTING SHOULD BE VERIFIED BY YOUR OWN ATTORNEY, ARCHITECT OR ZONING EXPERT. IF YOUR PROPERTY IS CURRENTLY LISTED WITH ANOTHER REAL ESTATE BROKER, PLEASE DISREGARD THIS OFFER. IT IS NOT OUR INTENTION TO SOLICIT THE OFFERINGS OF OTHER REAL ESTATE BROKERS. WE COOPERATE WITH THEM FULLY. EQUAL HOUSING OPPORTUNITY.



Retail Space For Lease

200 Middle Neck Rd Great Neck, NY 11021



Rozita Soomekh- Results Powered By Rozita

Licensed Associate Real Estate Broker

rozita.soomekh@elliman.com

Direct: 516.498.2152 | Cell: 516.205.2279

Professional Background

Rozita Soomekh

Top Commercial Real Estate Agent | Douglas Elliman

With over two decades of success in the real estate industry, Rozita Soomekh has built a reputation as one of the leading commercial real estate professionals in New York. Since 2000, Rozita has been providing exceptional service to a diverse range of clients, including individual investors, developers, large franchises, and well-established businesses.

Clients choose to work with Rozita for her comprehensive, full-service approach, integrity, extensive market knowledge, and tireless work ethic. Whether her clients are buying, selling, or investing in real estate, Rozita consistently delivers results that exceed expectations.

Her success is driven by a loyal base of repeat clients, many of whom are prominent developers and business leaders. Rozita has successfully marketed and sold commercial and residential properties across the five boroughs of New York, including Nassau, Queens, the Bronx, Manhattan, Brooklyn, and Suffolk.

In late 2018, Rozita expanded her business by forming The Rozita Soomekh Team, enabling her to better meet the growing demands of her clientele. Under her leadership, the team has excelled in closing high-value transactions and building long-term client relationships. Rozita's commitment to staying ahead of market trends and her dedication to providing clients with the best marketing strategies and negotiation tactics have earned her multiple awards and industry recognition.

ALL INFORMATION IS BELIEVED TO BE CORRECT, BUT NOT LIMITED TO SQUARE FOOTAGE, ROOM COUNT, ZONING IN THE LISTING SHOULD BE VERIFIED BY YOUR OWN ATTORNEY, ARCHITECT OR ZONING EXPERT. IF YOUR PROPERTY IS CURRENTLY LISTED WITH ANOTHER REAL ESTATE BROKER, PLEASE DISREGARD THIS OFFER. IT IS NOT OUR INTENTION TO SOLICIT THE OFFERINGS OF OTHER REAL ESTATE BROKERS. WE COOPERATE WITH THEM FULLY. EQUAL HOUSING OPPORTUNITY.

For More Information:

[Rozita Soomekh- Results Powered by Rozita](#)

Licensed Associate Real Estate Broker
Douglas Elliman Commercial - Long Island
516.498.2152
rozita.soomekh@elliman.com



WWW.ELLIMANCOMMERCIAL.COM

THE PROPERTY CONTAINED WITHIN THIS DOCUMENT IS BEING EXCLUSIVELY REPRESENTED BY DOUGLAS ELLIMAN REAL ESTATE COMMERCIAL DIVISION, 550 SMITHTOWN BYPASS STE. 117 SMITHTOWN, NY 11787 631.858.2405 © 2023 DOUGLAS ELLIMAN COMMERCIAL OF LI, LLC. ALL MATERIAL PRESENTED HEREIN IS INTENDED FOR INFORMATION PURPOSES ONLY. WHILE THIS INFORMATION IS BELIEVED TO BE CORRECT, IT IS REPRESENTED SUBJECT TO ERRORS, OMISSIONS, CHANGES OR WITHDRAWAL WITHOUT NOTICE. ALL PROPERTY INFORMATION, INCLUDING, BUT NOT LIMITED TO SQUARE FOOTAGE, ROOM COUNT, ZONING IN THE LISTING SHOULD BE VERIFIED BY YOUR OWN ATTORNEY, ARCHITECT OR ZONING EXPERT. IF YOUR PROPERTY IS CURRENTLY LISTED WITH ANOTHER REAL ESTATE BROKER, PLEASE DISREGARD THIS OFFER. IT IS NOT OUR INTENTION TO SOLICIT THE OFFERINGS OF OTHER REAL ESTATE BROKERS. WE COOPERATE WITH THEM FULLY. EQUAL HOUSING OPPORTUNITY.



WE ARE COMMERCIAL REAL ESTATE

Commercial real estate involves more than just property listings. To get the most effective results, you need to partner with a company that has a full complement of services and an in-depth team of professionals to help with all of your needs. Douglas Elliman's team of commercial real estate experts is committed to unrivaled performance standards when working with tenants, investors, purchasers and owners. We represent all major property types including office, industrial, retail, apartment and land. We treat each assignment with commitment and focus, from a single transaction in a local market to national and multi-market assignments. We help negotiate contracts, coordinate construction and provide both property management as well as ongoing advisory service to satisfy your changing real estate needs. Our breadth of market knowledge, unprecedented network and use of innovative technology extend to all types of property transactions.

For More Information:

Rozita Soomekh- Results Powered by Rozita

Licensed Associate Real Estate Broker

516.498.2152

rozita.soomekh@elliman.com

Office: 631.858.2405

Fax: 631.543.0851

550 Smithtown Bypass

Smithtown, NY 11787