

Industrial | For Lease

12960 SE SUZANNE

12960 SE Suzanne St.
HOBE SOUND, FL 33455

4,400 SF

Industrial Lease Opportunity

Highlights

- 4,400± SF (flexible unit size/divisible) situated on .20± acres
- 1,000 SF of outside storage
- Recently renovated space
- 10-dedicated parking spaces
- Zoned light industrial/commercial flex
- Ideal for contractors, storage, distribution or light manufacturing
- Easy access to I-95 and US-1 (5-minute drive)

1801 N. Military Trail, Suite 202
Boca Raton, FL 33431



nmrk.com



For information, please contact:

Alan H. Long

Managing Director

t 561-69-3994

alan.long@nmrk.com

Hamilton Long

Associate

t 561-315-8322

hamilton.long@nmrk.com

NEWMARK

The information contained herein has been obtained from sources deemed reliable but has not been verified and no guarantee, warranty or representation, either express or implied, is made with respect to such information. Terms of sale or lease and availability are subject to change or withdrawal without notice.

PHOTOS

12960 SE SUZANNE

- Recently renovated space: brand new bathroom, motorized over-head doors for ease of access and fresh air circulation
- Up to 17' ft clear allowing for stackable storage
- Two 14' H x 12' W motorized overhead roll-up doors and two 8' x 8' overhead roll-up for rear access of the property
- Energy efficient lighting system with LED high bay lights
- Big Power 3-Phase 200AMP service
- Brand new bathroom with new fixtures also includes utility sink on the exterior with hot water



PHOTOS

12960 SE SUZANNE

SPACE PRIOR TO RENOVATION



NORTHSIDE VIEW



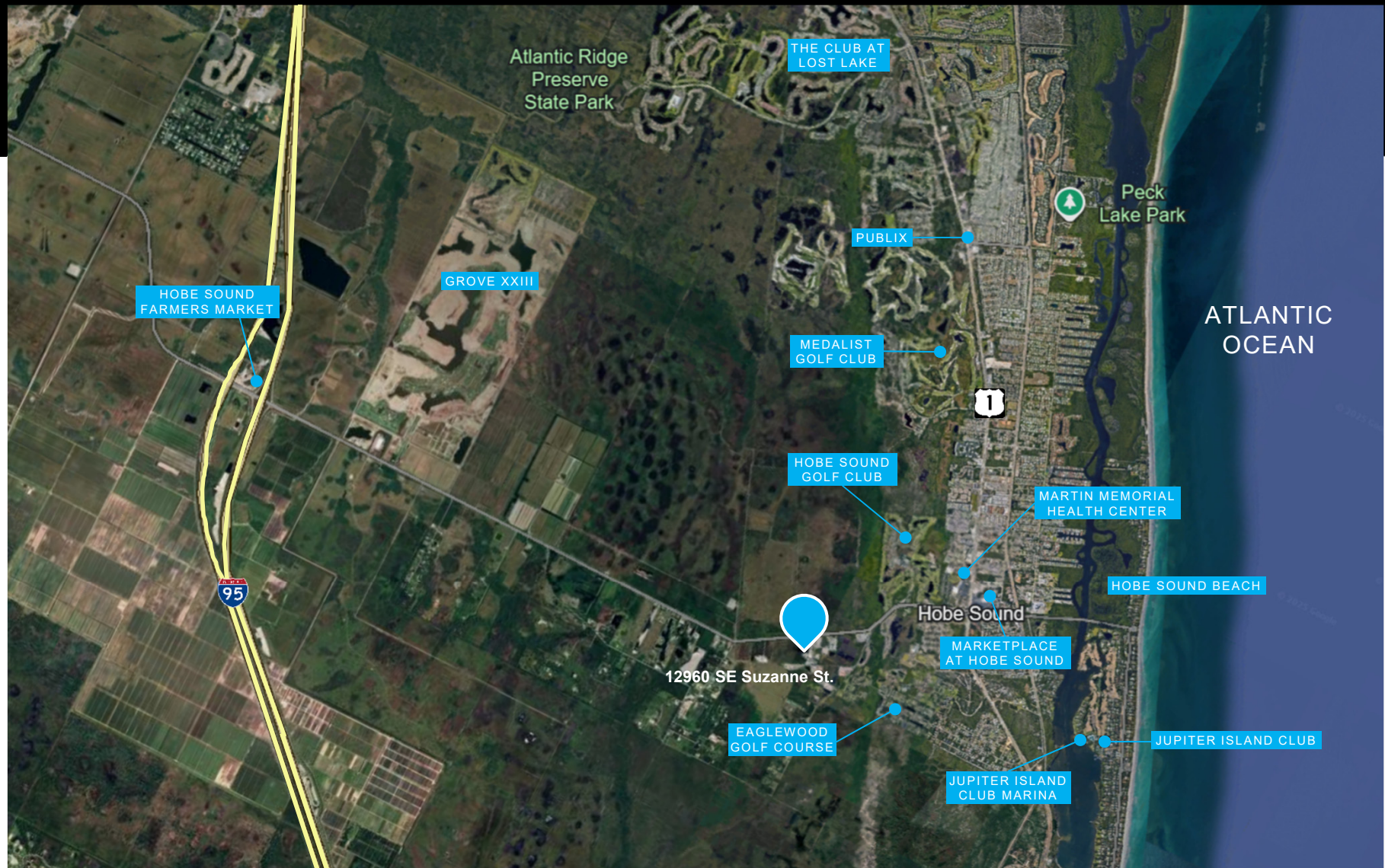
SOUTHSIDE VIEW



LOCATION OVERVIEW

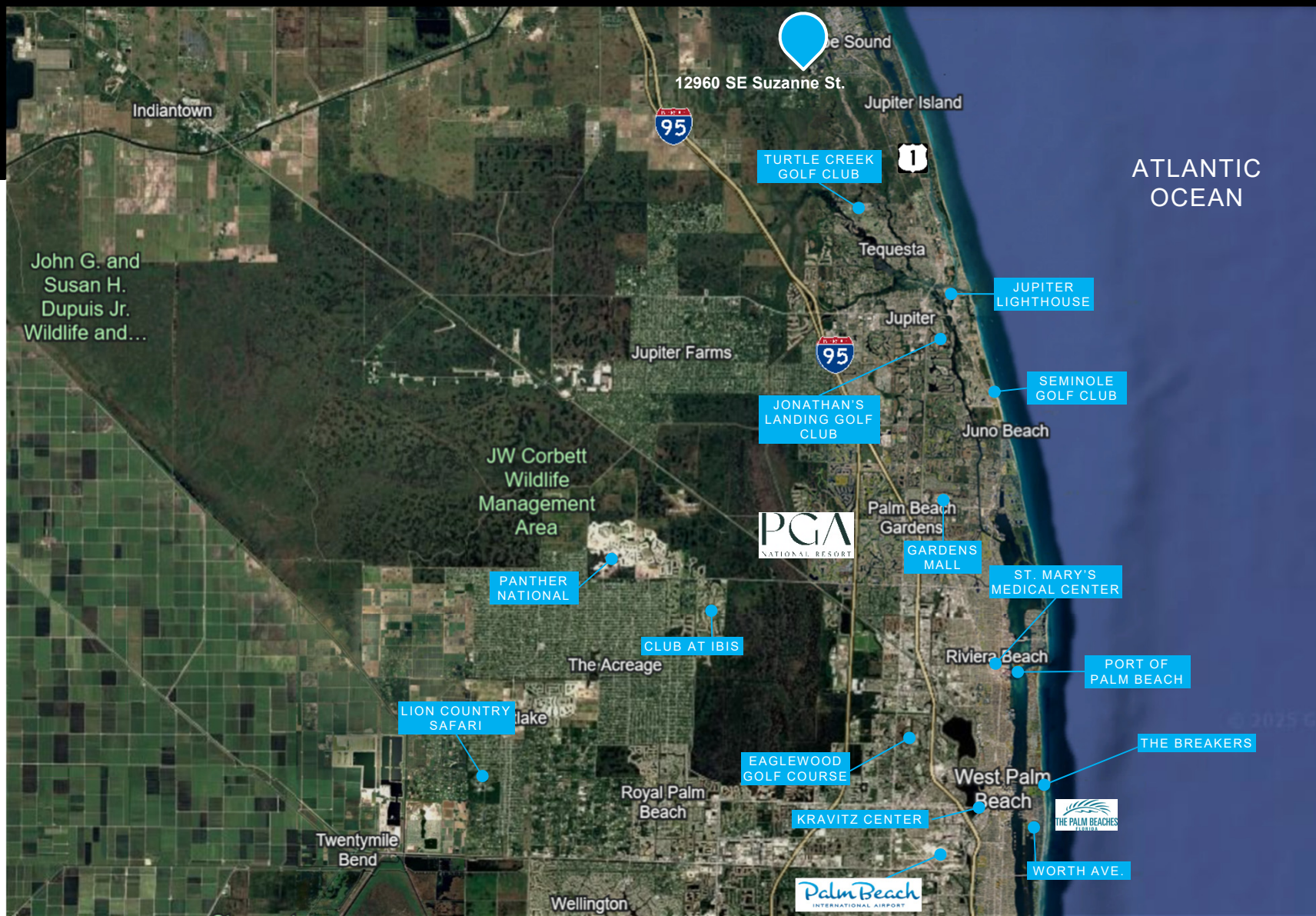
12960 SE SUZANNE

- Strategic location on Suzanne Drive with excellent access to major corridors like US-1 and close proximity to Jupiter Island



LOCATION OVERVIEW

12960 SE SUZANNE



12960 SE SUZANNE

12960 SE SUZANNE ST.
HOBE SOUND, FL 334551



NEWMARK

ALAN H. LONG

Managing Director

alan.long@nmrk.com D:

561-693-9994

HAMILTON LONG

Associate

hamilton.long@nmrk.com D:

561-315-8322

NMRK.COM