



REVITALIZATION PROJECT DOWNTOWN HOPEWELL

200 N. MAIN ST, HOPEWELL, VA 23860

NOW LEASING!

est. 1928



NEW RETAIL, OFFICE & RESTAURANT NEAR BEACON THEATRE & THE BOATHOUSE

FEATURES

- ▶ Exciting historic revitalization project in Downtown Hopewell, VA
- ▶ Two (2) story, sandstone and brick building with new retail, office & restaurant spaces available
- ▶ Within walking distance to restaurants, Waves Sandwich Company, Saucy's Bar.B.Q., Beacon Theatre, General District courthouse, Appomattox Regional Library
- ▶ Close to TriCities Hospital (formerly John Randolph Hospital), The Boathouse at City Point, Hopewell River Walk, City Marina
- ▶ Unique historic features like a walk-in bank vault and mezzanines available
- ▶ Easy access to I-295 (3.7 miles / 10 minute drive)

SUMMARY

Space Available	Retail / Office Restaurant	2,000 – 4,600 SF 3,100 SF
-----------------	-------------------------------	------------------------------

National Register of Historic Places United States Department of the Interior

The D. L. Elder Bank, located on the northwest corner of Main and West Poythress streets, was erected in 1929. Although built the year of the stock market crash, the design of this two-story, sandstone building imparts the sense of stability normally associated with a bank. Fred A. Bishop, who designed the Municipal Building, and Osbert L. Edwards, who along with Bishop was the architect for the Beacon Theatre, designed the bank.

The main section of the building is sandstone with the remainder of the building brick with sandstone above the second-floor windows and decorative brick and sandstone panels between the windows. The main entry is metal with decorative panels between the first and second floors. A large single transom tops the double entry doors with a decorative panel between the transom and doors. The remainder of the Main Street first floor on the brick section has large storefront windows and a second entry. The first-floor windows on the side of the building are large with transoms and sidelights. Other windows are 1/1-double-hung sash and are paired on the second floor. There is a projecting stone cornice. The roof parapet mimics the building with a sandstone parapet wall above the sandstone section and a brick parapet with stone panels above the brick section.

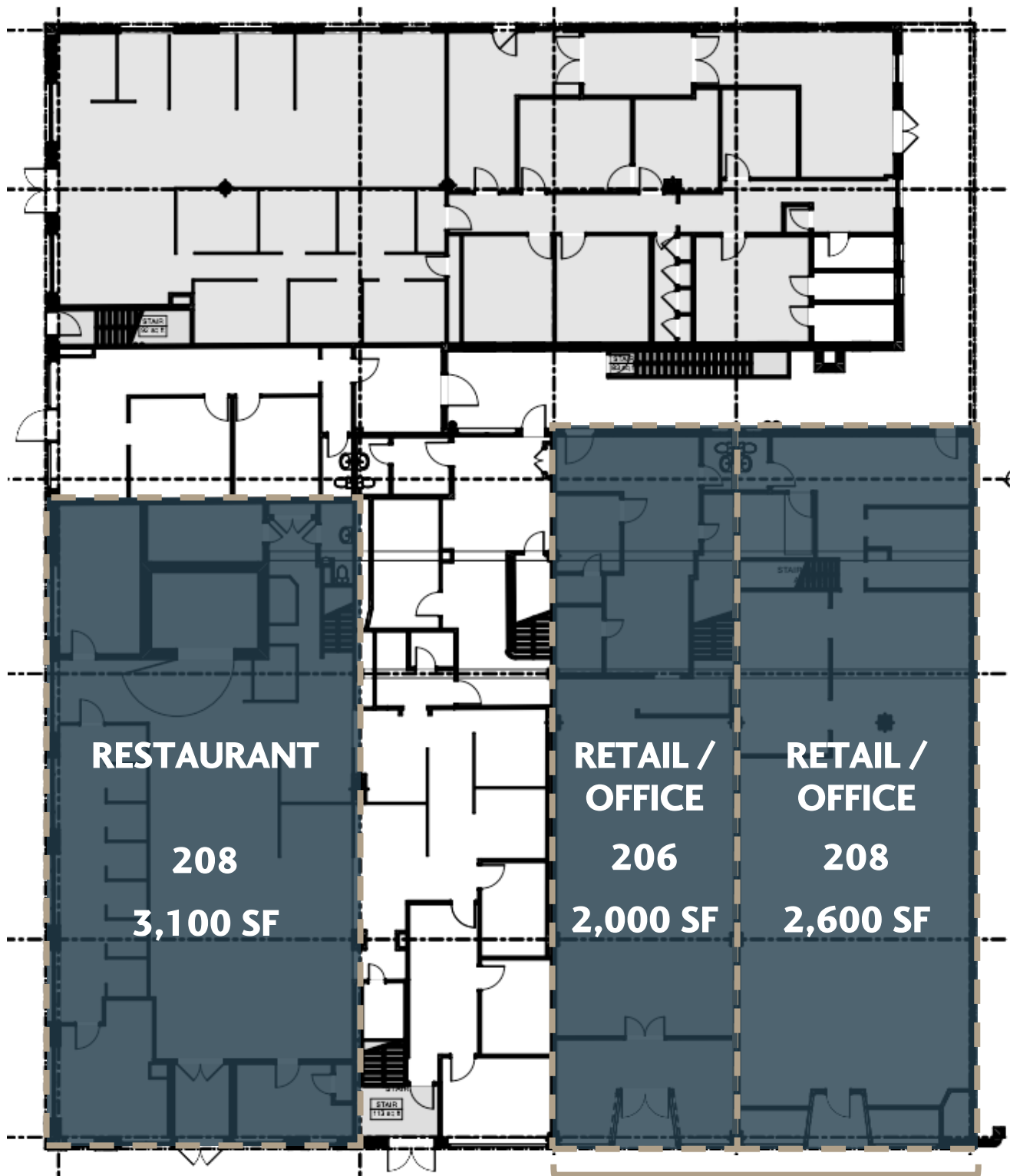
CONTACT

Sean Eichert, (804) 419-2295
seichert@realestateservicesco.com, realestateservicesco.com

Real Estate Services Co.
13281 River's Bend Blvd, Suite 201, Chester, VA 23836

FIRST FLOOR

W. Poythress St



COMBINABLE 4,600 SF

N. Main St

MAP

3.7 MILES / 10 MINS



10

CHESTERFIELD COUNTY

JAMES RIVER

WATERFRONT PARK

GRANT'S HEADQUARTERS

APPOMATTOX RIVER

MARINA

THE "BIG H"

THE BOATHOUSE

RIVERWALK

TRI-CITIES HOSPITAL

REGIONAL LIBRARY

BEACON THEATRE

CITY POINT ICE CREAM & BURGERS

LEGACY ROASTING CO.

SAUCY'S BAR.B.Q.

WAVES SANDWICH CO.

HOPEWELL CITY OFFICES

COURTHOUSE

SITE

USPS

COFFEE

PUBLIC WORKS

PRAXAIR

MESSER

ADVANSIX

SMURFIT WESTROCK

CSX RAIL LINE

DOMINION ENERGY

