

AVAILABLE FOR LEASE

2650 LAKE SAHARA DR
LAS VEGAS, NV

OFFICE & MEDICAL OFFICE



2650 LAKE SAHARA DR LAS VEGAS, NV



2650 Lake Sahara Drive is a **27,174**-square-foot building situated within the prestigious, master-planned community of The Lakes. Ideally positioned **adjacent to Summerlin**, the property offers exceptional convenience for business and medical professionals, with easy access for both employees and patients residing in the surrounding area.

Prominently **located off West Sahara Avenue just west of South Durango Drive**, the building benefits from excellent street visibility, making it easy to locate for first-time and returning visitors alike. **Ample covered and surface parking** is available, thoughtfully designed to enhance convenience for both staff and patients.

Office and medical suites are currently available for lease, offering flexible floor plans to accommodate a variety of professional needs. Whether you're expanding your practice or establishing a new office, 2650 Lake Sahara Drive provides a prime location and a **professional environment to support your success.**

VACANT SUITES

Suite 100 2,646 RSF



2,330 USF

Suite 120 3,147 RSF



2,771 USF

Suite 190 3,213 RSF



2,829 USF

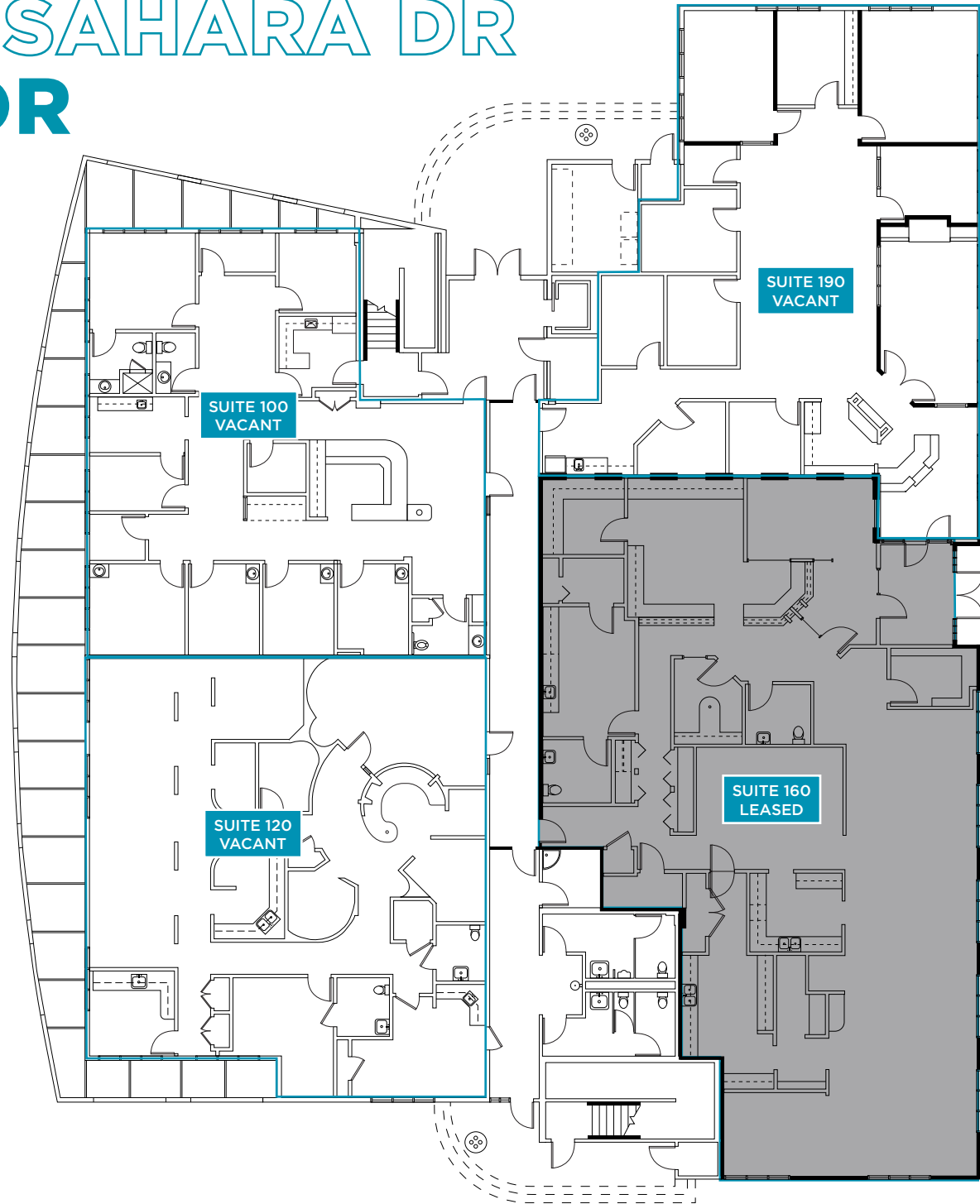
Suite 200 13,579 RSF



13,000 USF

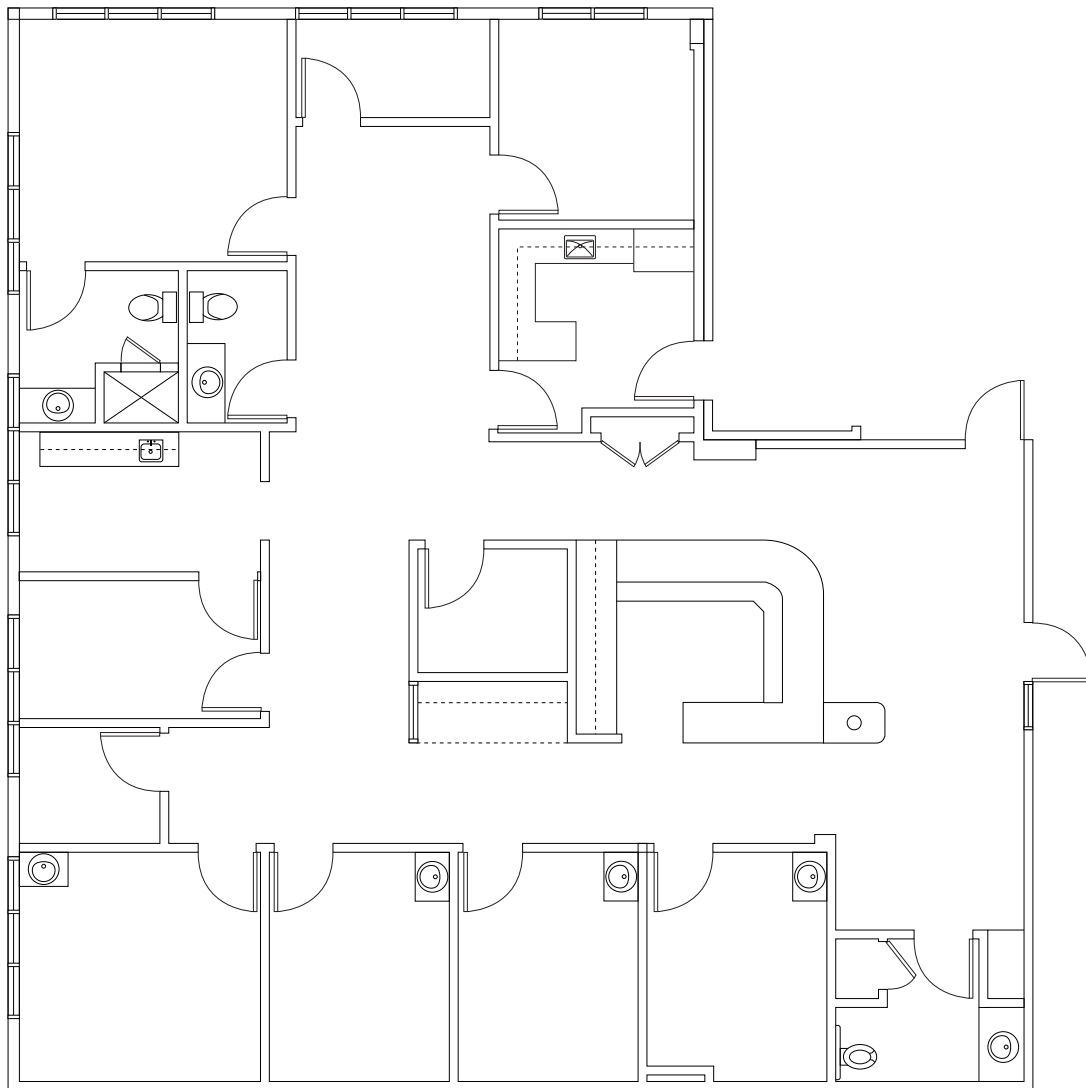
2650 LAKE SAHARA DR

FIRST FLOOR



SUITE 100

FLOOR PLAN



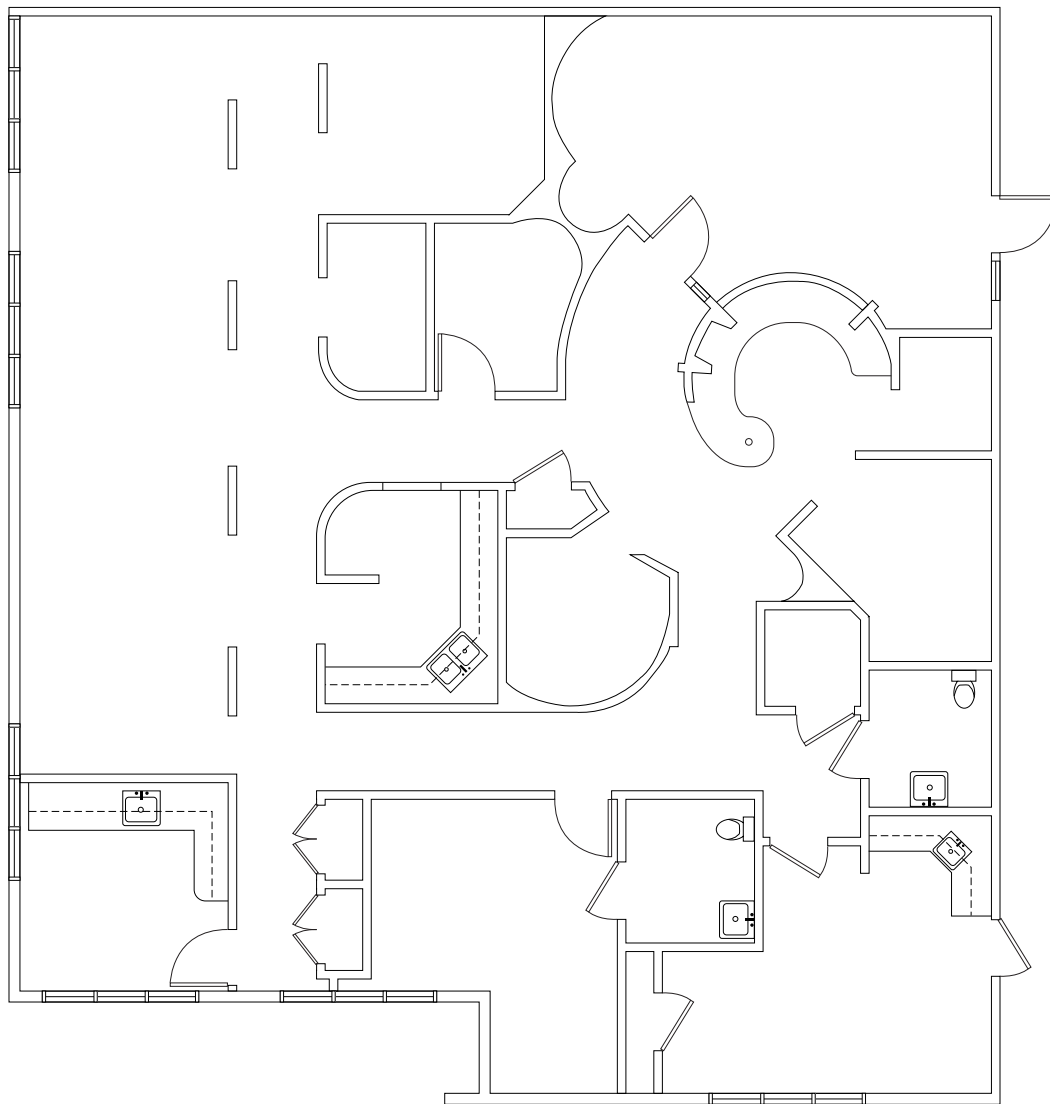
PROPERTY FEATURES

Tenant:	Vacant
Use:	Medical Office
RSF:	2,646 SF
USF:	2,330 SF
Rate:	\$1.95 NNN
Virtual Tour:	Suite 100 360°



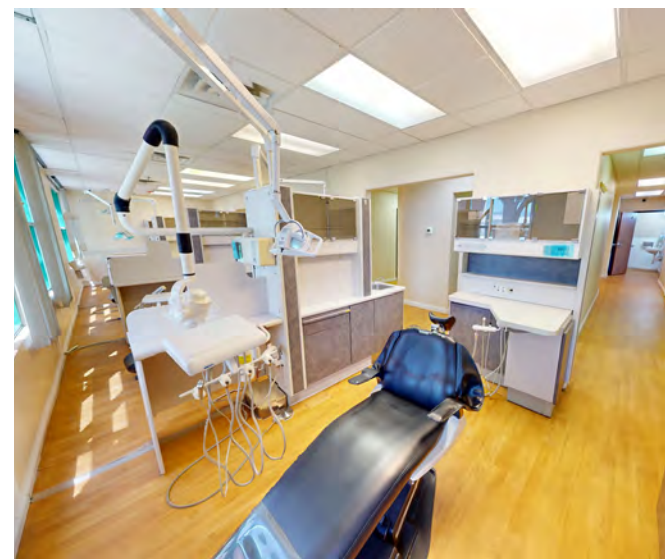
SUITE 120

FLOOR PLAN



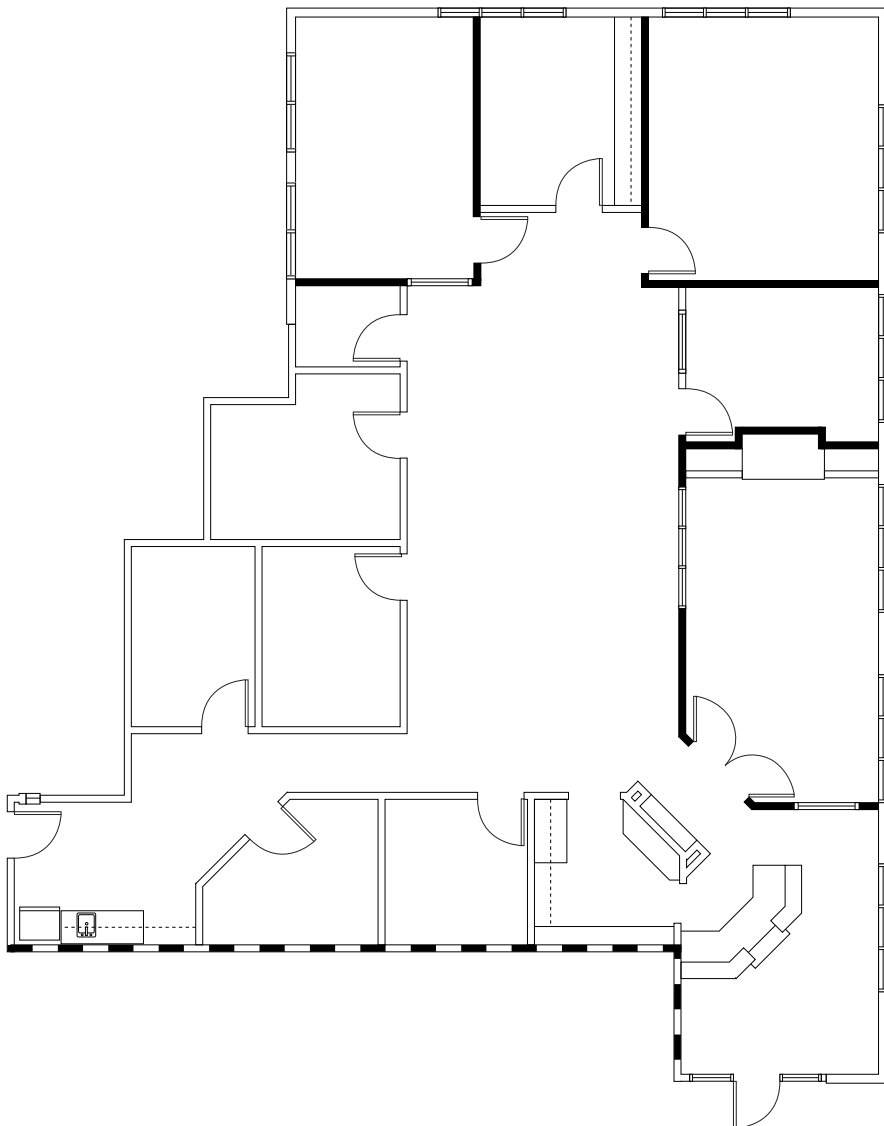
PROPERTY FEATURES

Tenant:	Vacant
Use:	Dental Office
RSF:	3,147 SF
USF:	2,771 SF
Rate:	\$1.95 NNN
Virtual Tour:	Suite 120 360°



SUITE 190

FLOOR PLAN



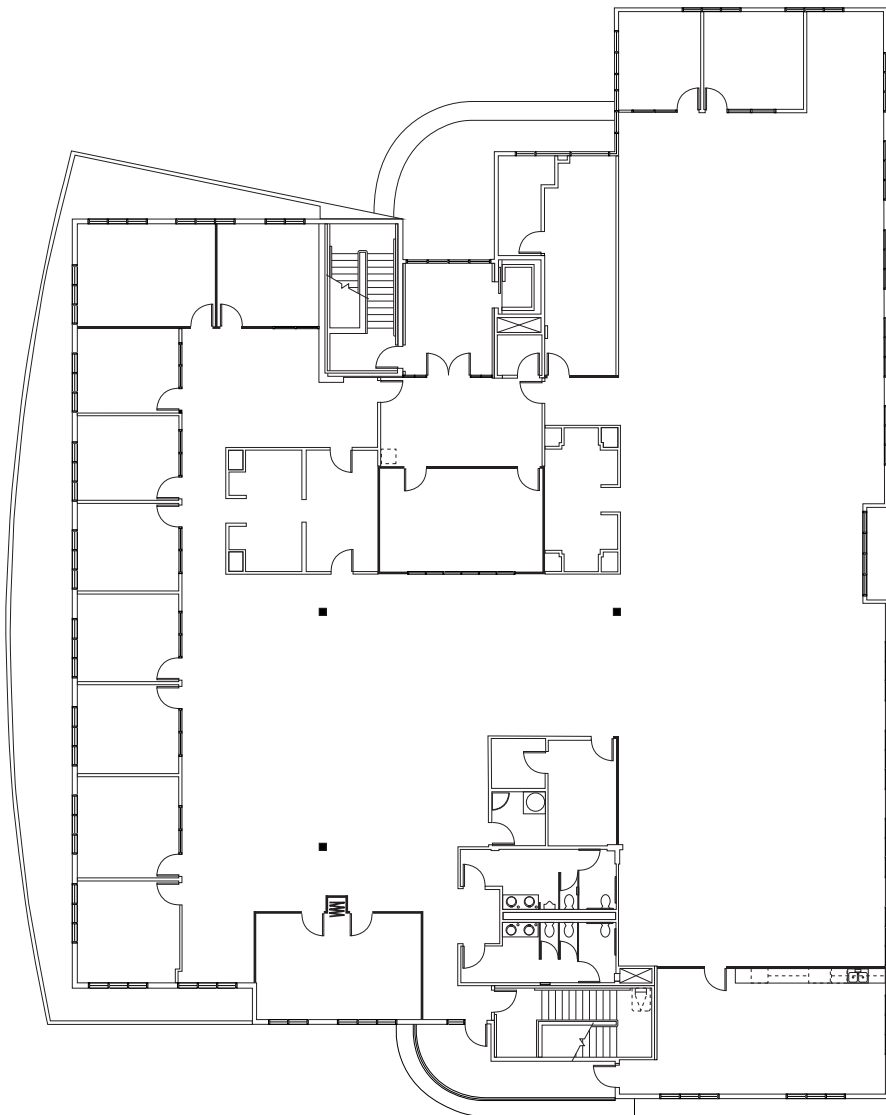
PROPERTY FEATURES

Tenant:	Vacant
Use:	Standard Office
RSF:	3,213 SF
USF:	2,829 SF
Rate:	\$1.75 NNN
Virtual Tour:	Suite 190 360°



SUITE 200

FLOOR PLAN



PROPERTY FEATURES

Tenant:	Vacant
Use:	Standard Office
RSF:	13,579 SF
USF:	13,000 SF
Rate:	\$1.75 NNN
Virtual Tour:	Suite 200 360°



AMENITIES MAP

AERIAL MAP





For more information, please contact:

Cody Seager
Senior Associate
NV Lic. #BS0145582
cody.seager@cushwake.com
+1 702 605 1648

Troy Lance
Associate
NV Lic. # S.02000618
troy.lance@cushwake.co
m+1 702 680 0051

Amy Lance
Director
NV Lic. #S.0051283
amy.lance@cushwake.co
m+1 702 688 6872

10845 Griffith Peak Dr
Suite 160
Las Vegas, NV 89135
+1 702 796 7900
cushmanwakefield.com

©2025 Cushman & Wakefield. All rights reserved. The information contained in this communication is strictly confidential. This information has been obtained from sources believed to be reliable but has not been verified. NO WARRANTY OR REPRESENTATION, EXPRESS OR IMPLIED, IS MADE AS TO THE CONDITION OF THE PROPERTY (OR PROPERTIES) REFERENCED HEREIN OR AS TO THE ACCURACY OR COMPLETENESS OF THE INFORMATION CONTAINED HEREIN, AND SAME IS SUBMITTED SUBJECT TO ERRORS, OMISSIONS, CHANGE OF PRICE, RENTAL OR OTHER CONDITIONS, WITHDRAWAL WITHOUT NOTICE, AND TO ANY SPECIAL LISTING CONDITIONS IMPOSED BY THE PROPERTY OWNER(S). ANY PROJECTIONS, OPINIONS OR ESTIMATES ARE SUBJECT TO UNCERTAINTY AND DO NOT SIGNIFY CURRENT OR FUTURE PROPERTY PERFORMANCE.

