

7901-09 SCHATZ POINTE DR
WASHINGTON TOWNSHIP, OH 45459



LEASE RATE: \$16.50 PSF FULL SERVICE

PROPERTY DESCRIPTION

Conveniently located at State Route 725, Yankee Road and I-675 with over 114,000 vehicles per day. The property has been well-maintained and the building has undergone numerous renovations.

PROPERTY HIGHLIGHTS

- Easily accessible **first floor office suites**
- Most suites offer signage and **parking right at the door**
- 30,000 square foot free-standing building with **over 150 parking spaces**
- Many top restaurants, banking, shopping, hospitals and hotels nearby
- Excellent location with **easy access to I-675 and State Route 725**
- Located within Washington Township- **no city income tax**

AVAILABLE SUITES

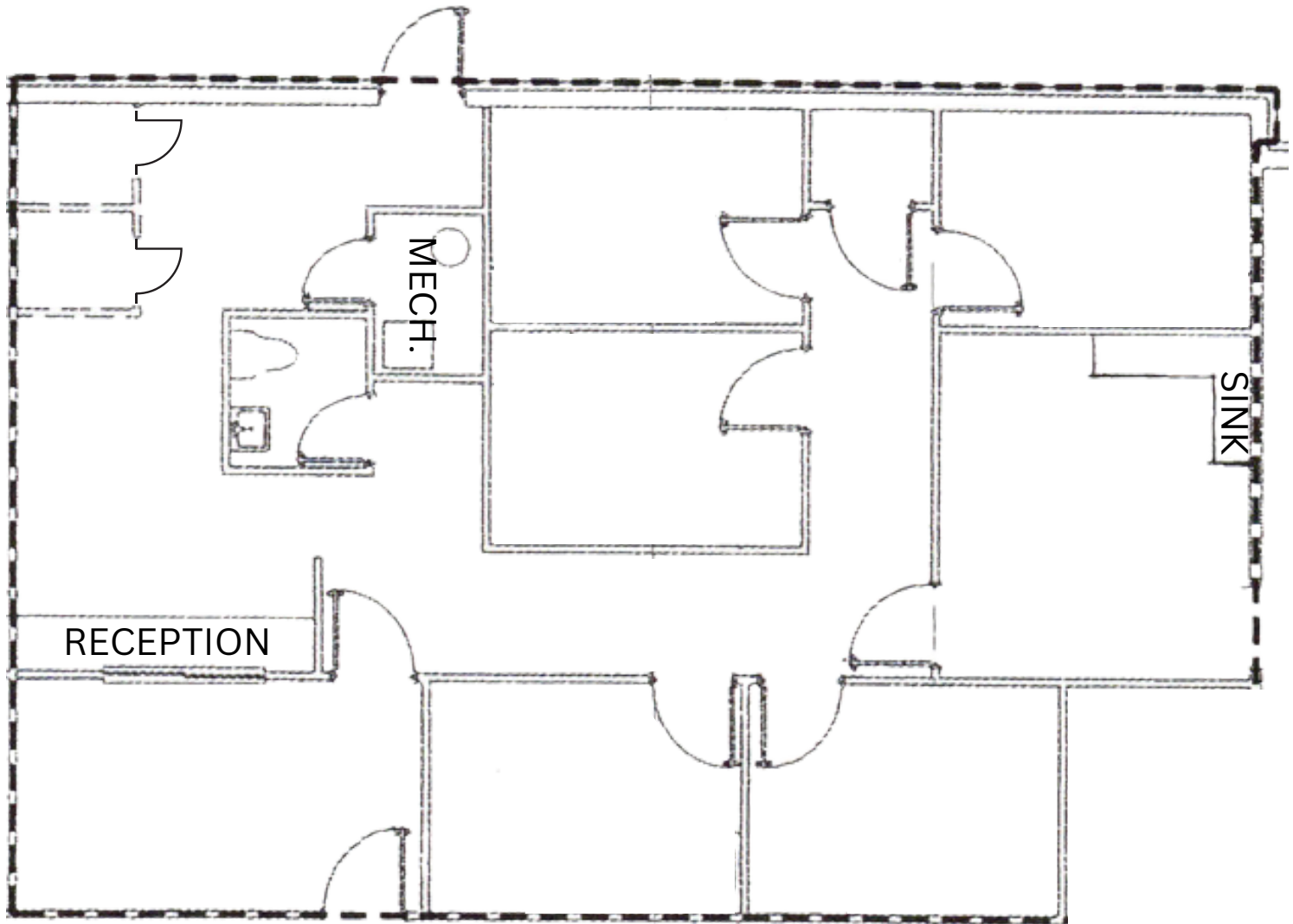
Suite #	Approx. SF	Lease Rate	Available
7901-C	1,629	\$16.50 PSF	Feb. 1 2025

PRESENTED BY: **ASHLEY SCHNEIDER**
Director of Sales & Leasing
Direct: 312/343-1316
Email: Ashley@cra-dayton.com

CRA-DAYTON.COM
7071 Corporate Way, Suite 200 | Centerville, OH 45459
Office: 937/433-9000

7901- 7909 SCHATZ POINTE DR - WASHINGTON TOWNSHIP, OH 45459

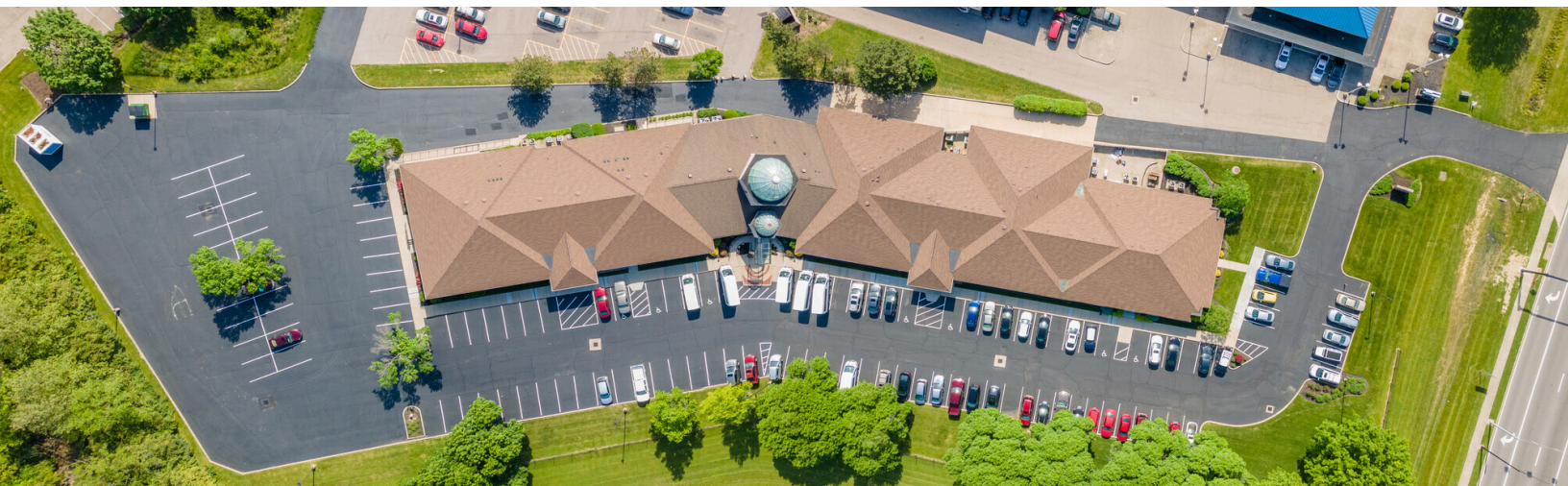
FLOOR PLAN



PRESENTED BY: **ASHLEY SCHNEIDER**
Director of Sales & Leasing
Direct: 312/343-1316
Email: Ashley@cra-dayton.com

CRA-DAYTON.COM
7071 Corporate Way, Suite 200 | Centerville, OH 45459
Office: 937/433-9000

7901- 7905 SCHATZ POINTE DR - WASHINGTON TOWNSHIP, OH 45459



PRESENTED BY: **ASHLEY SCHNEIDER**
Director of Sales & Leasing
Direct: 312/343-1316
Email: Ashley@cra-dayton.com

CRA-DAYTON.COM

7071 Corporate Way, Suite 200 | Centerville, OH 45459
Office: 937/433-9000