

1.9M BUSHEL CAPACITY GRAIN STORAGE & RAIL TRANSFER FACILITY

500 Railroad Ave, Sutton, ND 58484 | ±16 Acres

FOR SALE



PROPERTY OVERVIEW

EXECUTIVE SUMMARY

Cushman & Wakefield and Peoples Company are proud to present the opportunity to acquire a state-of-the-art 46,500 SF grain facility located in Sutton, North Dakota. With a substantial storage capacity of 1,962,000 bushels and direct access to BNSF rail service, this facility delivers highly efficient grain handling and transportation, streamlining logistics from storage to shipment.

PROPERTY HIGHLIGHTS



1.9 million Bushel Capacity



26 car capacity Rail Spur



Two large truck scales



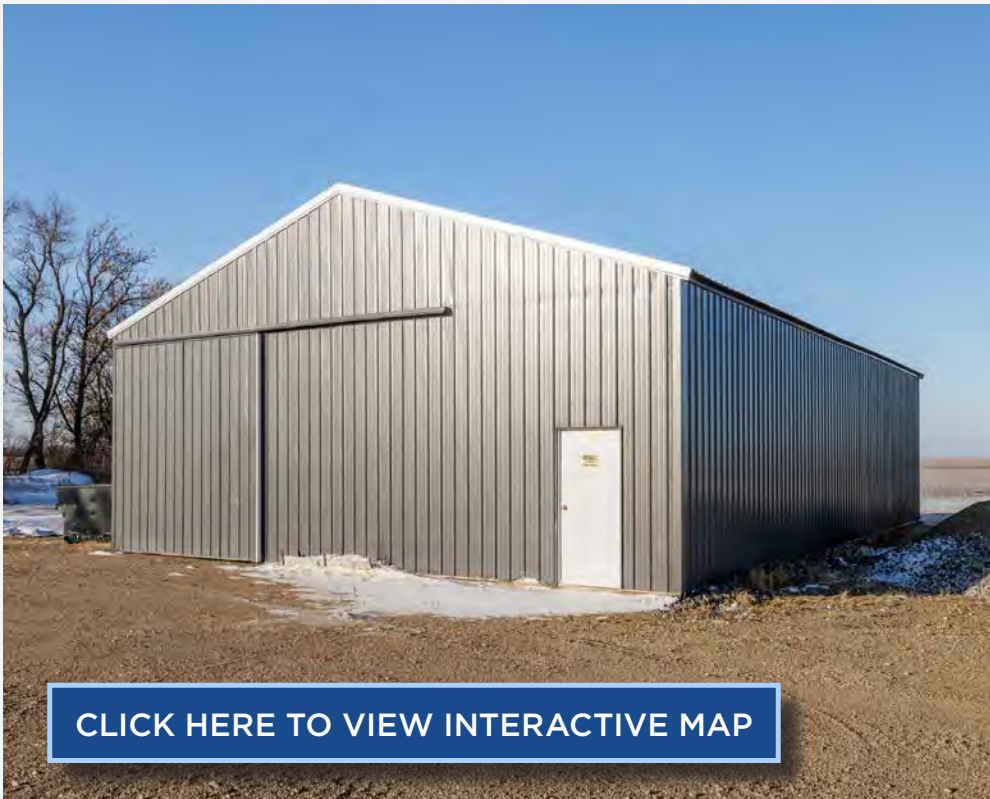
PROPERTY DETAILS

DETAILS

ADDRESS:
500 Railroad Ave, Sutton, North Dakota 58484
APNS:
17-0000-03839-015, 17-0000-03840-010, 17-0000-03839-020
ZONING:
Commercial
GROSS LAND ACRES:
15.69
TOTAL BUILDING SF:
46,559
BUSHEL STORAGE:
1,962,000
TOTAL BINS:
6
HANDLING (3 LEGS):
6,000 BPH
HANDLING (1 LEG):
20,000 BPH
RAIL SPUR:
26 Car Capacity
RECEIVING:
Via Truck
LOADOUT:
16 Cars/Day
CONSTRUCTION:
Steel
RAIL SERVICE:
BNSF - Currently Scheduled 1x/Week
SCALES:
72' Truck Scale, 110' Truck Scale

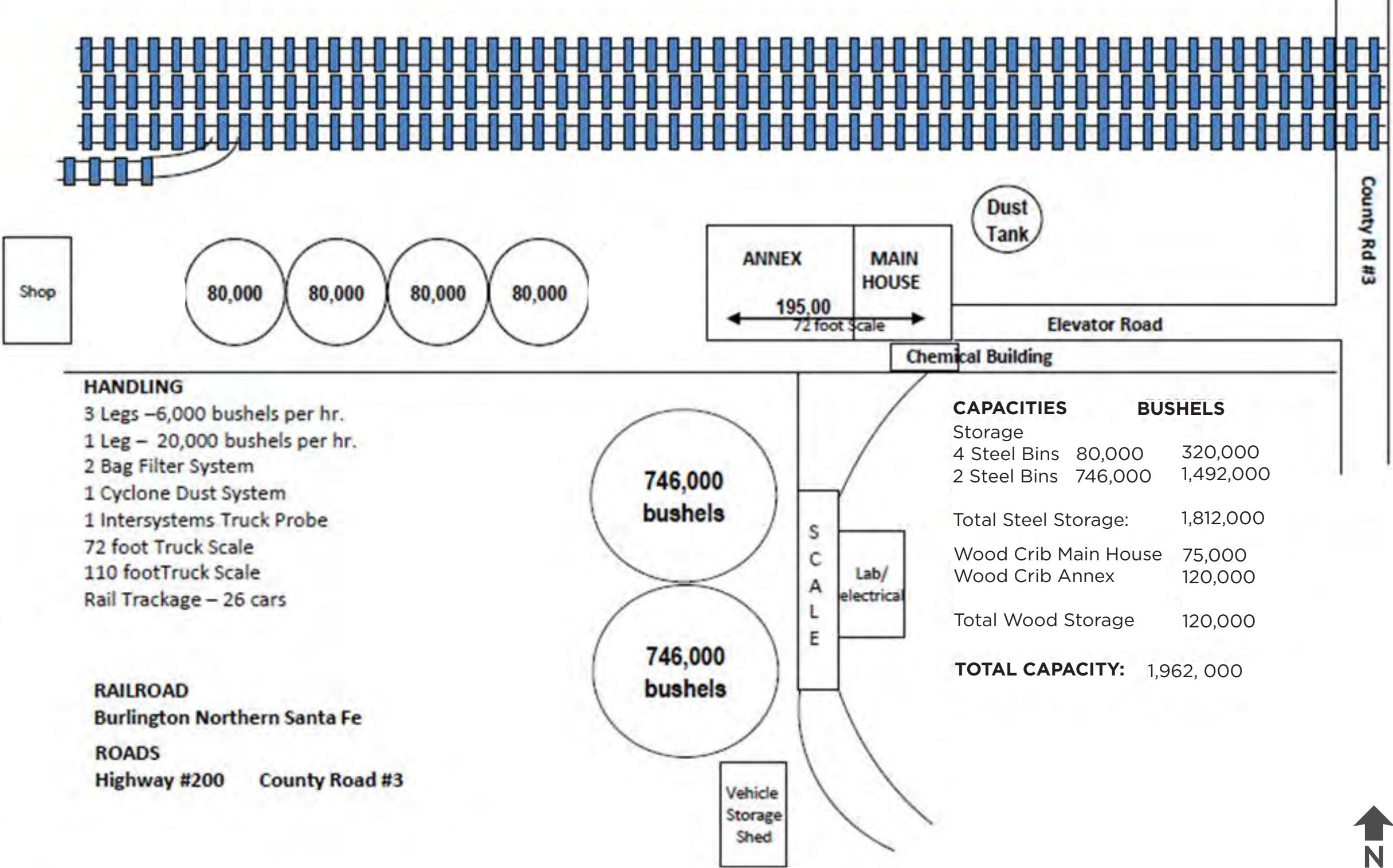
ADDITIONAL DETAILS

- 1.9M BUSHEL CAPACITY
- TEMP MONITORING IN (2) 746,000 BU BINS
- MANUALLY CONTROLLED AERATION IN BINS
- CHEMICAL BUILDING
- 2 BAG FILTER SYSTEM



[CLICK HERE TO VIEW INTERACTIVE MAP](#)

FACILITY DIAGRAM



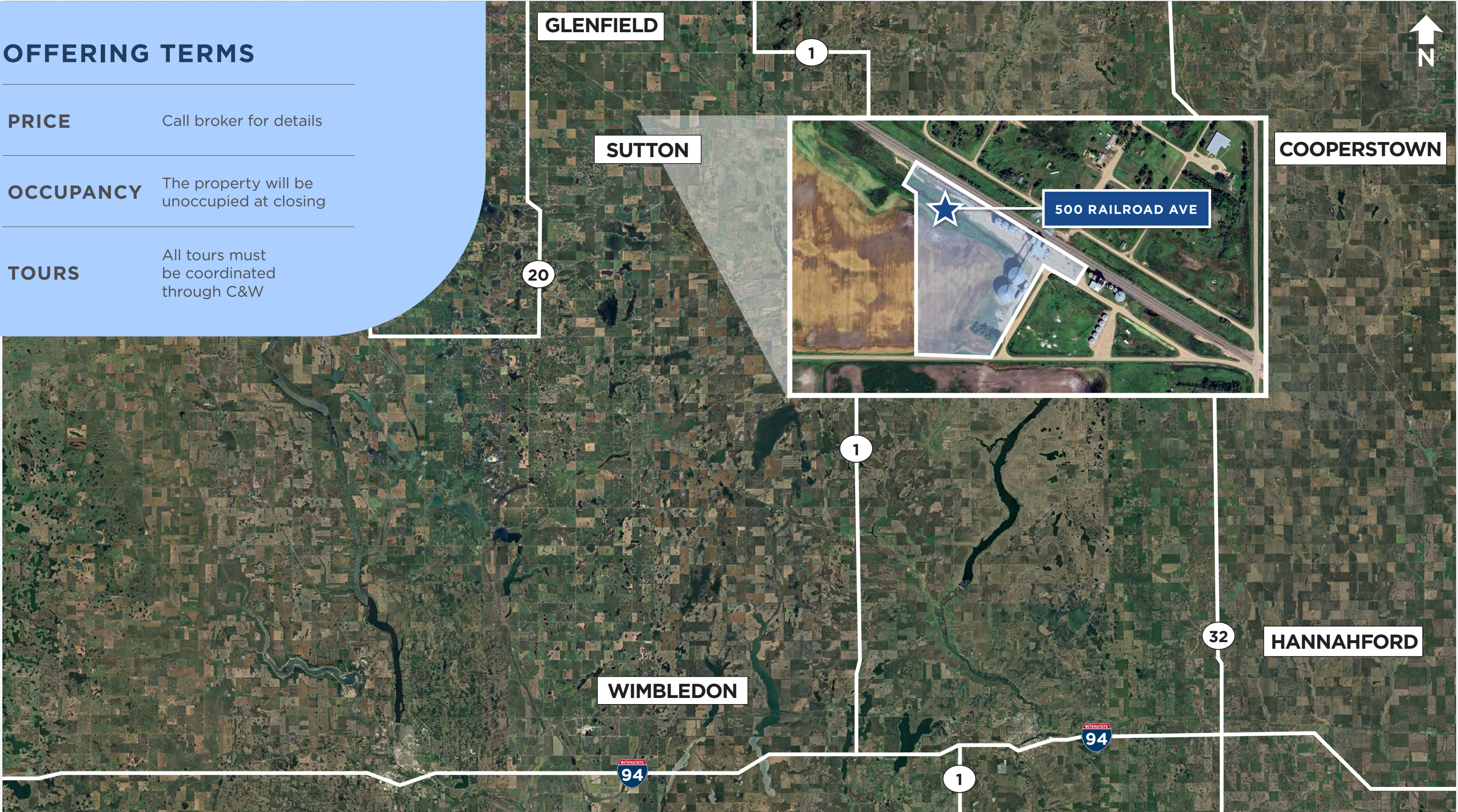
AERIAL MAP

OFFERING TERMS

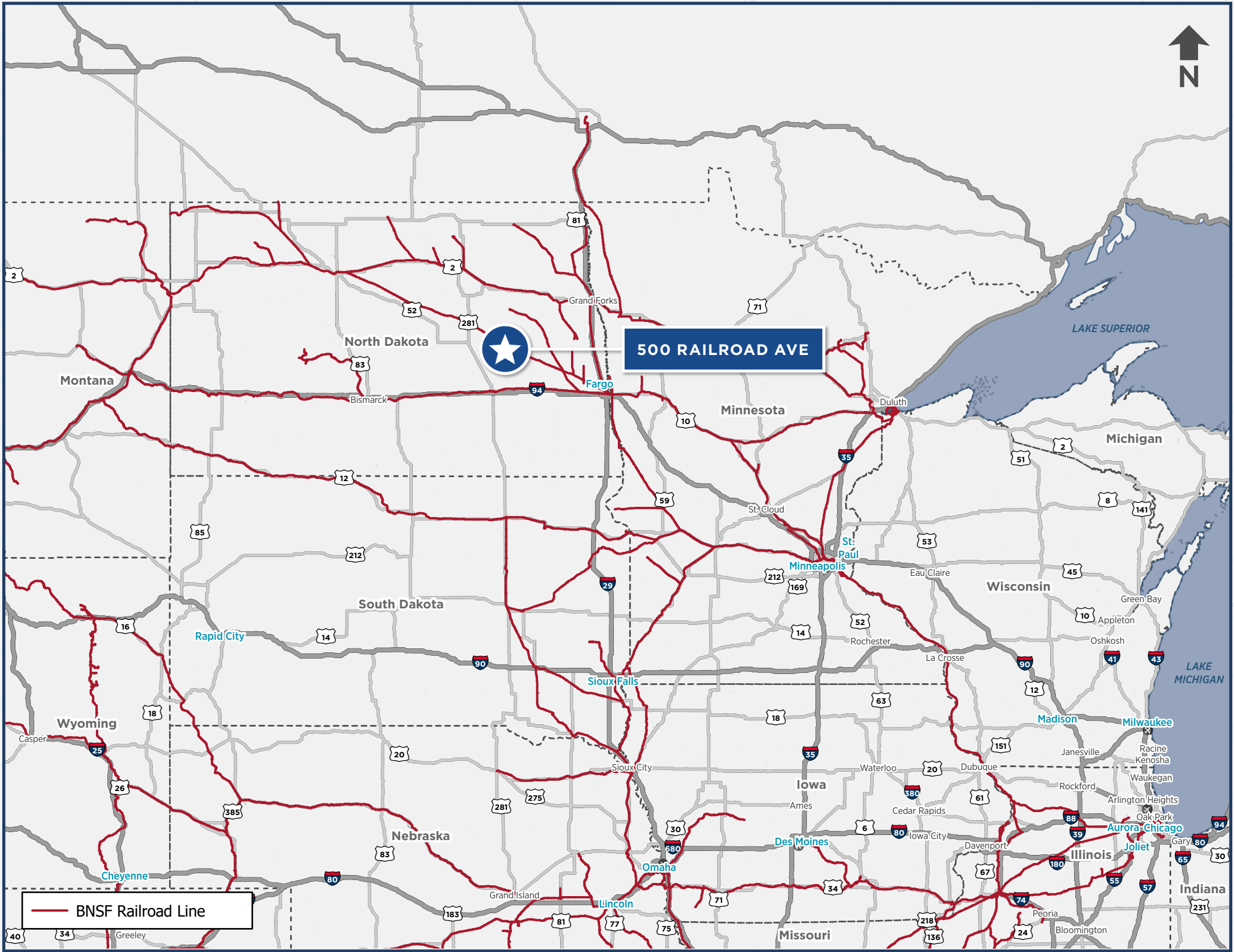
PRICE Call broker for details

OCCUPANCY The property will be unoccupied at closing

TOURS All tours must be coordinated through C&W



BNSF RAILROAD MAP





1.9M BUSHEL CAPACITY GRAIN STORAGE & RAIL TRANSFER FACILITY

500 Railroad Ave, Sutton, ND 58484

Listed By:

LINDSEY BROWN

Land Agent

+1 701 371 5538

lindsey@peoplescompany.com

CHRIS WOOD

Vice Chairman

+1 312 424 8064

chris.wood@cushwake.com

ADAM MCCOSTLIN

Managing Director

+1 312 424 8034

adam.mccostlin@cushwake.com

LUKE SCHAMMEL

Senior Associate

+1 312 424 8098

luke.schammel@cushwake.com

Advisory Services Provided By:

MATT DAVIS

Managing Director

+1 619 772 7541

matt.davis@cushwake.com

CA LIC #01758818

JARED GROSS

Associate

+1 424 603 3383

jared.gross@cushwake.com

CA LIC #02043811

[CLICK HERE TO VIEW LISTING SITE](#)

©2026 Cushman & Wakefield. All rights reserved. The information contained in this communication is strictly confidential. This information has been obtained from sources believed to be reliable but has not been verified. NO WARRANTY OR REPRESENTATION, EXPRESS OR IMPLIED, IS MADE AS TO THE CONDITION OF THE PROPERTY (OR PROPERTIES) REFERENCED HEREIN OR AS TO THE ACCURACY OR COMPLETENESS OF THE INFORMATION CONTAINED HEREIN, AND SAME IS SUBMITTED SUBJECT TO ERRORS, OMISSIONS, CHANGE OF PRICE, RENTAL OR OTHER CONDITIONS, WITHDRAWAL WITHOUT NOTICE, AND TO ANY SPECIAL LISTING CONDITIONS IMPOSED BY THE PROPERTY OWNER(S). ANY PROJECTIONS, OPINIONS OR ESTIMATES ARE SUBJECT TO UNCERTAINTY AND DO NOT SIGNIFY CURRENT OR FUTURE PROPERTY PERFORMANCE.