

RETAIL AT 550

WASHINGTON

exclusively leased by

BA BRADFORD
ALLEN

550 W. WASHINGTON BOULEVARD, CHICAGO, IL



550
WASHINGTON

PRIME RETAIL FRONTAGE IN WEST LOOP ON WASHINGTON & CLINTON

Within walking distance of the Clinton, Washington, and Wells CTA Stations

Located at the base of a
16-story office building

Central West Loop location, just steps from the French Market, **which sees over 7,000 visitors per day**

Adjacent to Ogilvie and Union Metra stations, **which see over 100,000 riders per day**

Continued growth of the residential population in the immediate area



78,938

1-mile population

425,956

1-mile daytime population

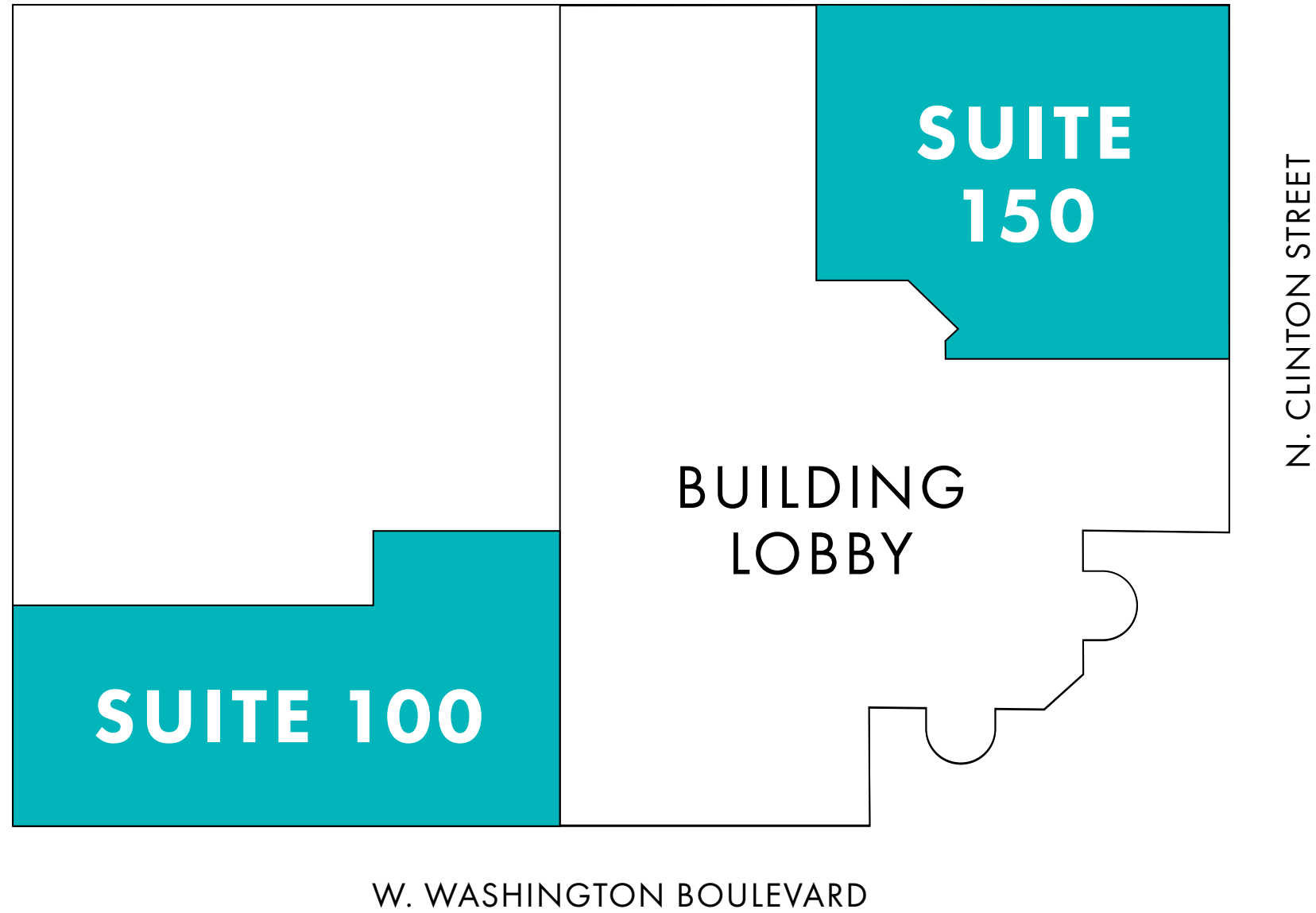
\$132,311

1-mile median household income

53,319

2-mile households

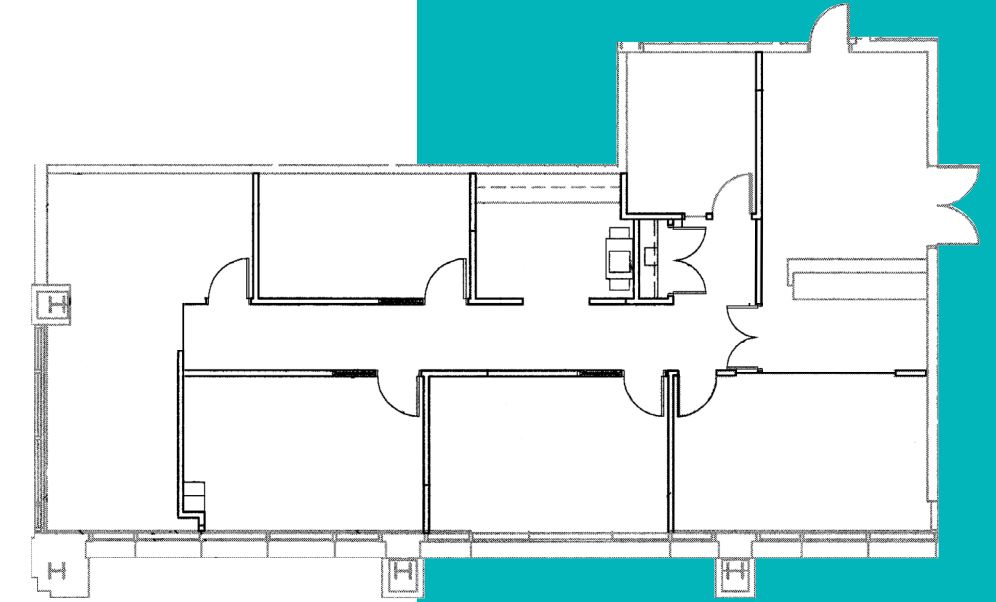
FIRST FLOOR



SUITE 100

2,187 SF

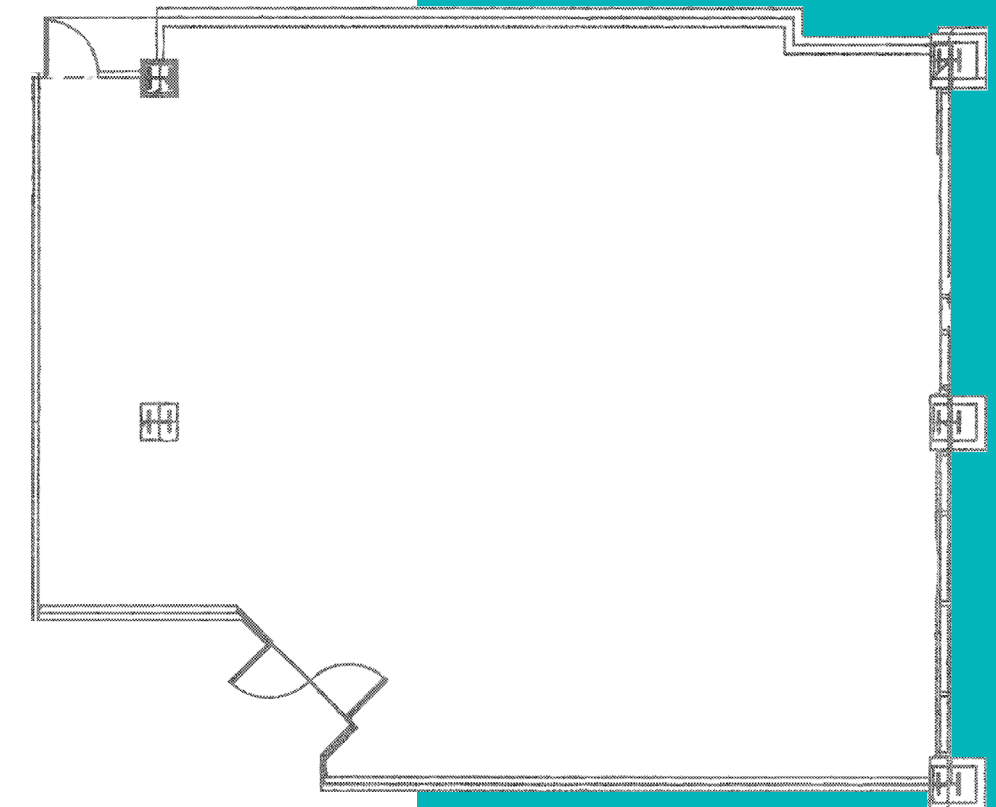
This space is suitable for retail or medical use and features five private offices, a lobby entrance, and the option to add a second entrance on Washington.



SUITE 150

2,096 SF

This former 7/11 location offers prime frontage on Clinton and includes a walk-in cooler and freezer, a three-compartment sink, and convenient access to a loading dock. The space can also be accessed directly from the building lobby.

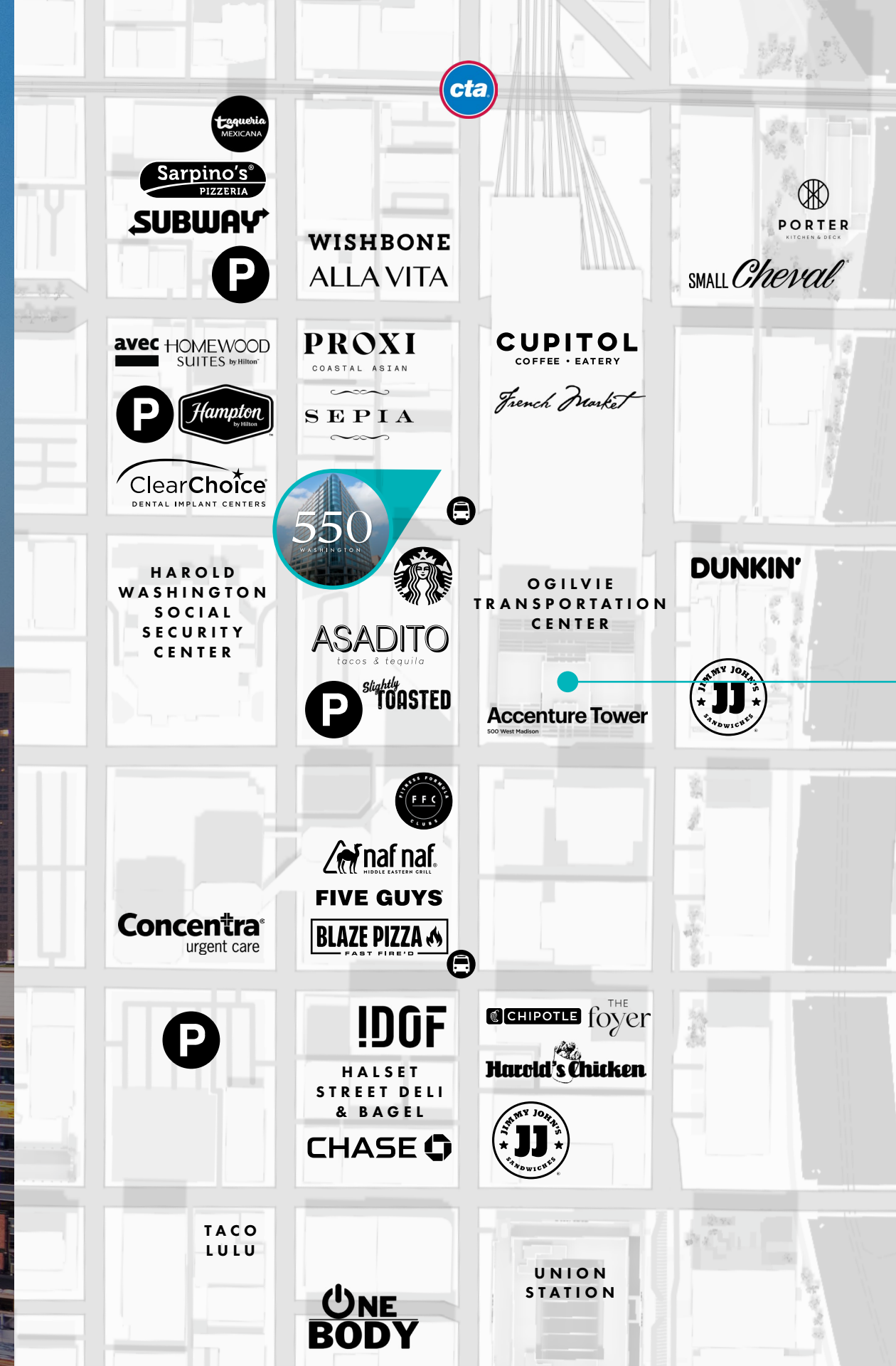


RETAIL RADIUS

OGILVIE
TRANSPORTATION
CENTER AND
FOOD COURT

550
WASHINGTON

BA
BRADFORD
ALLEN



550
WASHINGTON

OGILVIE
FOOD COURT

BENJYEHUDA™

BOXCAR BETTY'S

citi Yolk.

MADISON TAVERN

BURGER KING

SBARRO BURRITO BEACH
MEXICAN GRILL

CINNABON TACO BELL

SOUL & SMOKE DUNKIN'

Jamba

POLOMBIA
RESTAURANT GROUP

POPEYES

550

WASHINGTON

exclusively leased by

BA BRADFORD
ALLEN

FOR MORE INFORMATION
OR TO ARRANGE A TOUR,
PLEASE CONTACT:

**MICHAEL
FLINCHBAUGH**

(312) 741-8121

mflinchbaugh@bradfordallen.com

**KATRINA
DOUGHERTY**

(312) 994-5680

kdougherty@bradfordallen.com