

20263 HOOVER STREET
DETROIT, MICHIGAN



**SIGNATURE
ASSOCIATES**
KNOW SIGNATURE | KNOW RESULTS

INDUSTRIAL FOR SALE
69,022 Square Feet Available



PROPERTY FEATURES

- 69,022 square feet available
- 12'-18' clear height
- (4) grade level doors
- (4) 5-ton cranes
- Zoned industrial
- Many building upgrades, along with new construction
- 2/3 of the building is leased out to machinery storage
- Rail access and heavy power
- Separate grow facilities with extra room to double production
- Large fenced yard with paved parking
- Asking Price: \$5,050,000 (\$73.17/sq. ft.)



For more information, please contact:

CHRIS MONSOUR
(248) 948 0107
cmonsour@signatureassociates.com

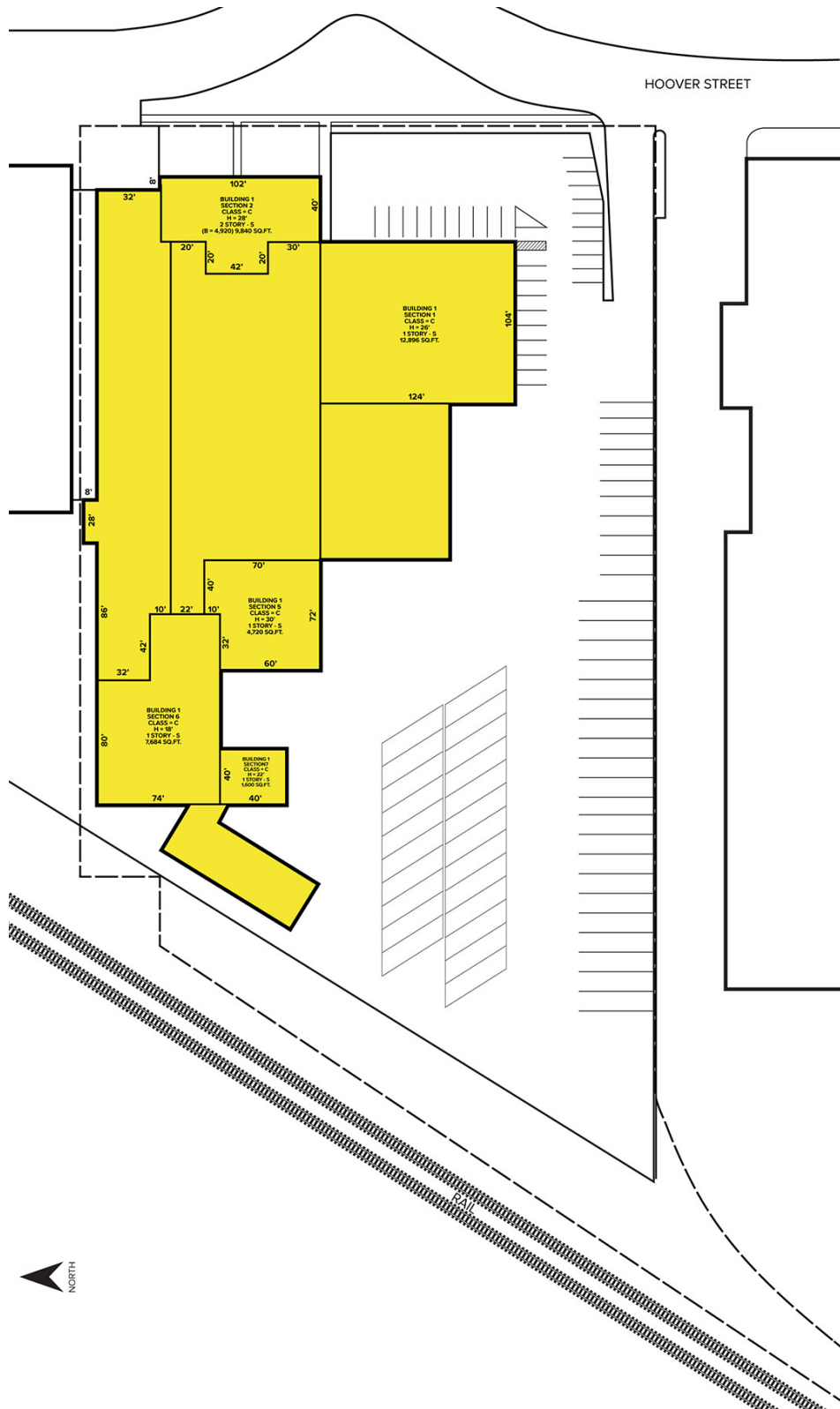
SIGNATURE ASSOCIATES
One Towne Square, Suite 1200
Southfield, MI 48076
www.signatureassociates.com

20263 Hoover Street – Detroit, Michigan

Industrial For Sale

69,022
Square Feet
AVAILABLE

Site Plan



For more information, please contact:

CHRIS MONSOUR
(248) 948 0107
cmonsour@signatureassociates.com

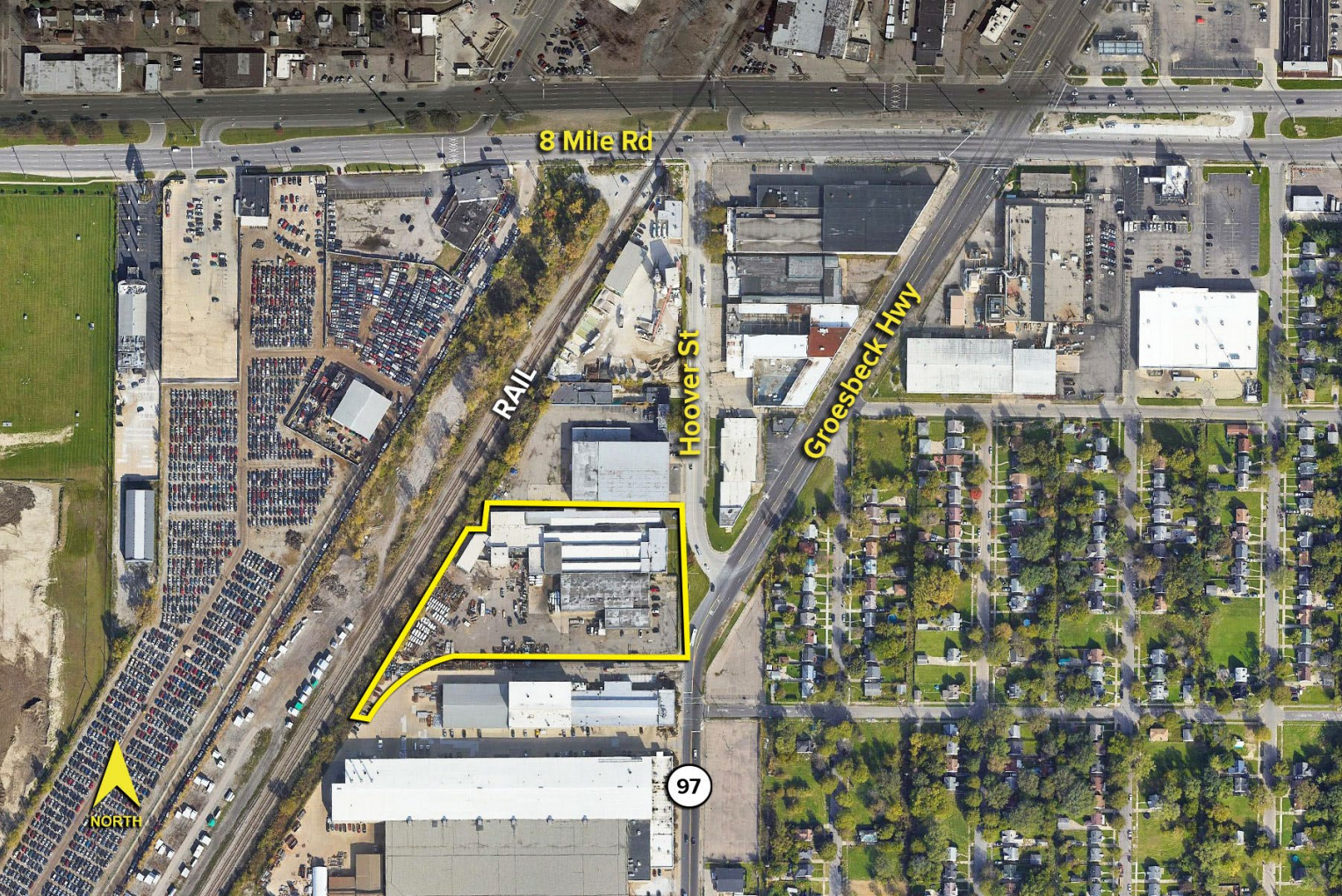
SIGNATURE ASSOCIATES
One Towne Square, Suite 1200
Southfield, MI 48076
www.signatureassociates.com

20263 Hoover Street – Detroit, Michigan

Industrial For Sale

69,022
Square Feet
AVAILABLE

Aerial



For more information, please contact:

CHRIS MONSOUR
(248) 948 0107
cmonsour@signatureassociates.com

SIGNATURE ASSOCIATES
One Towne Square, Suite 1200
Southfield, MI 48076
www.signatureassociates.com

Information is subject to verification and no liability for errors or omissions is assumed. Price is subject to change and listing withdrawal.