



1301 Hagadorn Rd

1301 Hagadorn Rd, East Lansing, MI 48823



Dave Ledebuhr
Musselman Realty
322 Abbott Rd, East Lansing, MI 48823
dsledebuhr@gmail.com
(517) 332-3582



1301 Hagadorn Rd

\$20.00 /SF/Yr

Class A office space in an architecturally significant East Lansing office building. Ample on-site parking. Highlights: 8,760 sqft of office space; Security card access system; 5 enclosed private offices; 4 open 'bull-pen' offices for cubicles;

- Class A office space in an architecturally significant East Lansing office building
- 2nd Floor East Wing office space only for Lease. 8,760 sqft of space available
- High Traffic visibility - Corner of Saginaw & Hagadorn



Rental Rate: \$20.00 /SF/Yr

Property Type: Office

Building Class: C

Rentable Building Area: 8,760 SF

Year Built: 1990

Walk Score ®: 14 (Car-Dependent)

Transit Score ®: 32 (Some Transit)

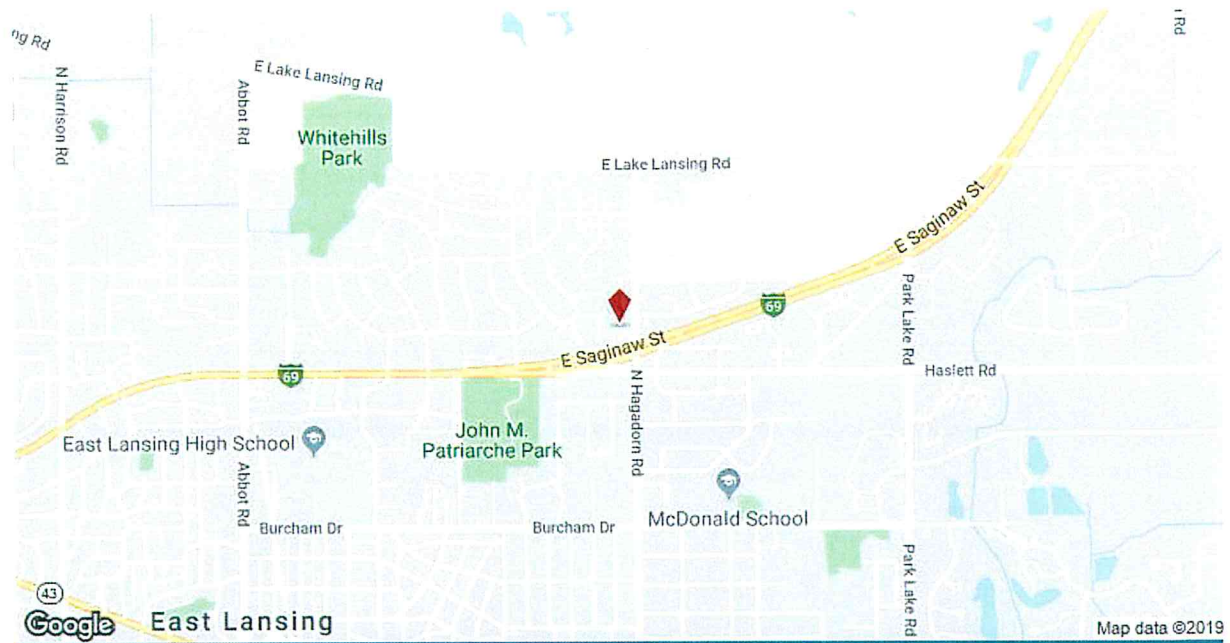
Rental Rate Mo: \$1.67 USD/SF/Mo



2nd Floor

Space Available 8,760 SF
Rental Rate \$20.00 /SF/Yr
Date Available Now
Service Type Full Service Gross
Space Type Relet
Space Use Office
Lease Term 2 - 5 Years

Windows...windows...windows for abundant natural light;
Separate thermostat controls;
IT room;
Elevator Access from shared reception area;
Restrooms & drinking fountain in suite;
Break room with a full kitchen, eating area, and whiteboard;
Small furnished conference room.
This is 2nd Floor East Wing office space only for Lease. 8,760 sqft of space available.



1301 Hagadorn Rd, East Lansing, MI 48823

The space is available immediately at:

\$20 per sqft;
monthly rent \$ 14,600;
annual \$175,200

Shown By Appointment only. List Agent must be present at all showings. Call Musselman Realty Broker/Owner-David S. Ledebuhr, CCIM at 517-332-3582 to arrange a private showing.

Property Photos



P7171003

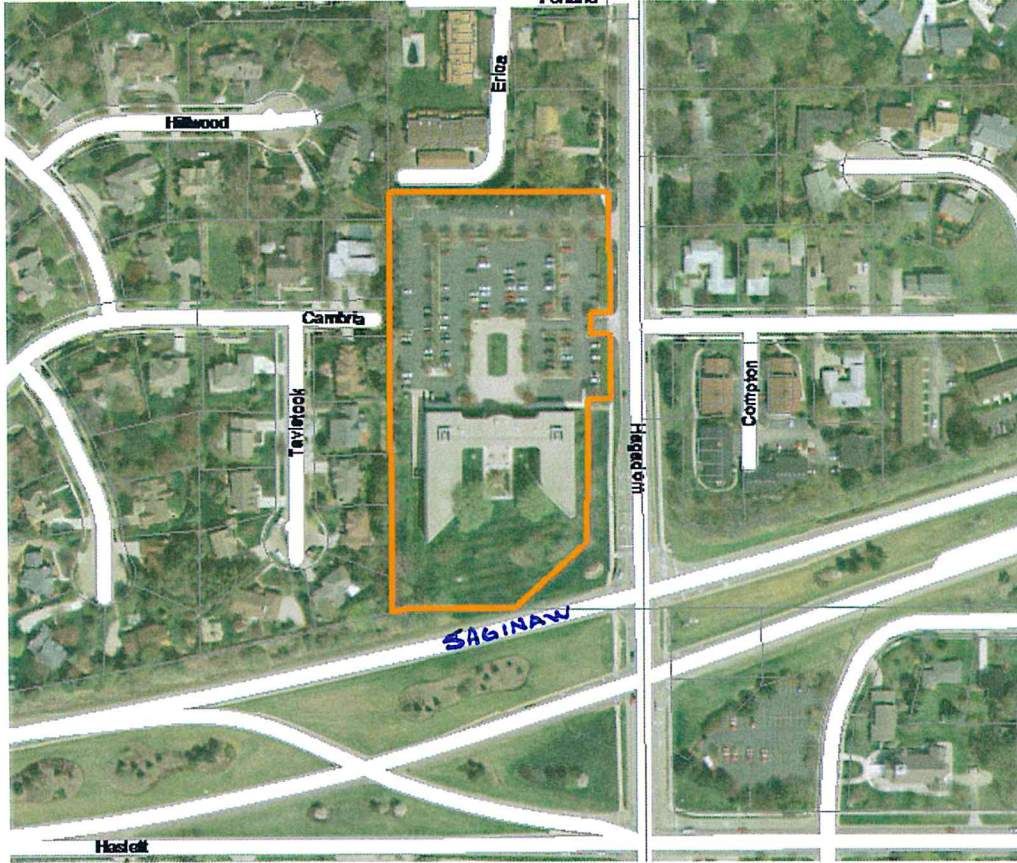


P7171004

Property Photos



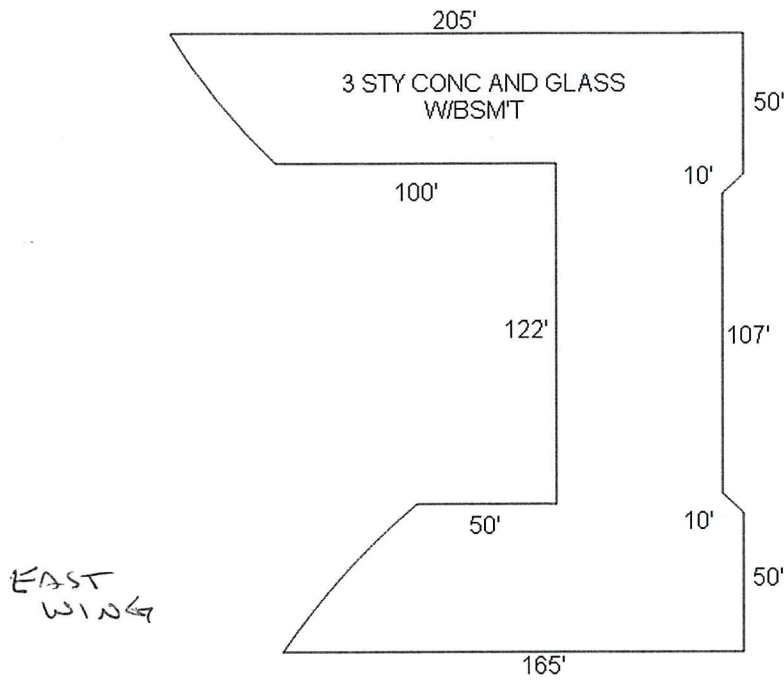
Image/Sketch for Parcel: 33-20-02-07-218-030



****Disclaimer:** BS&A Software provides BS&A Online as a way for municipalities to display information online and is not responsible for the content or accuracy of the data herein. This data is provided for reference only and WITHOUT WARRANTY of any kind, expressed or inferred. Please contact your local municipality if you believe there are errors in the data.

Copyright © 2019 [BS&A Software, Inc.](#)

Image/Sketch for Parcel: 33-20-02-07-218-030



Sketch by Apex Medina™

****Disclaimer:** BS&A Software provides BS&A Online as a way for municipalities to display information online and is not responsible for the content or accuracy of the data herein. This data is provided for reference only and WITHOUT WARRANTY of any kind, expressed or inferred. Please contact your local municipality if you believe there are errors in the data.

Copyright © 2019 BS&A Software, Inc.



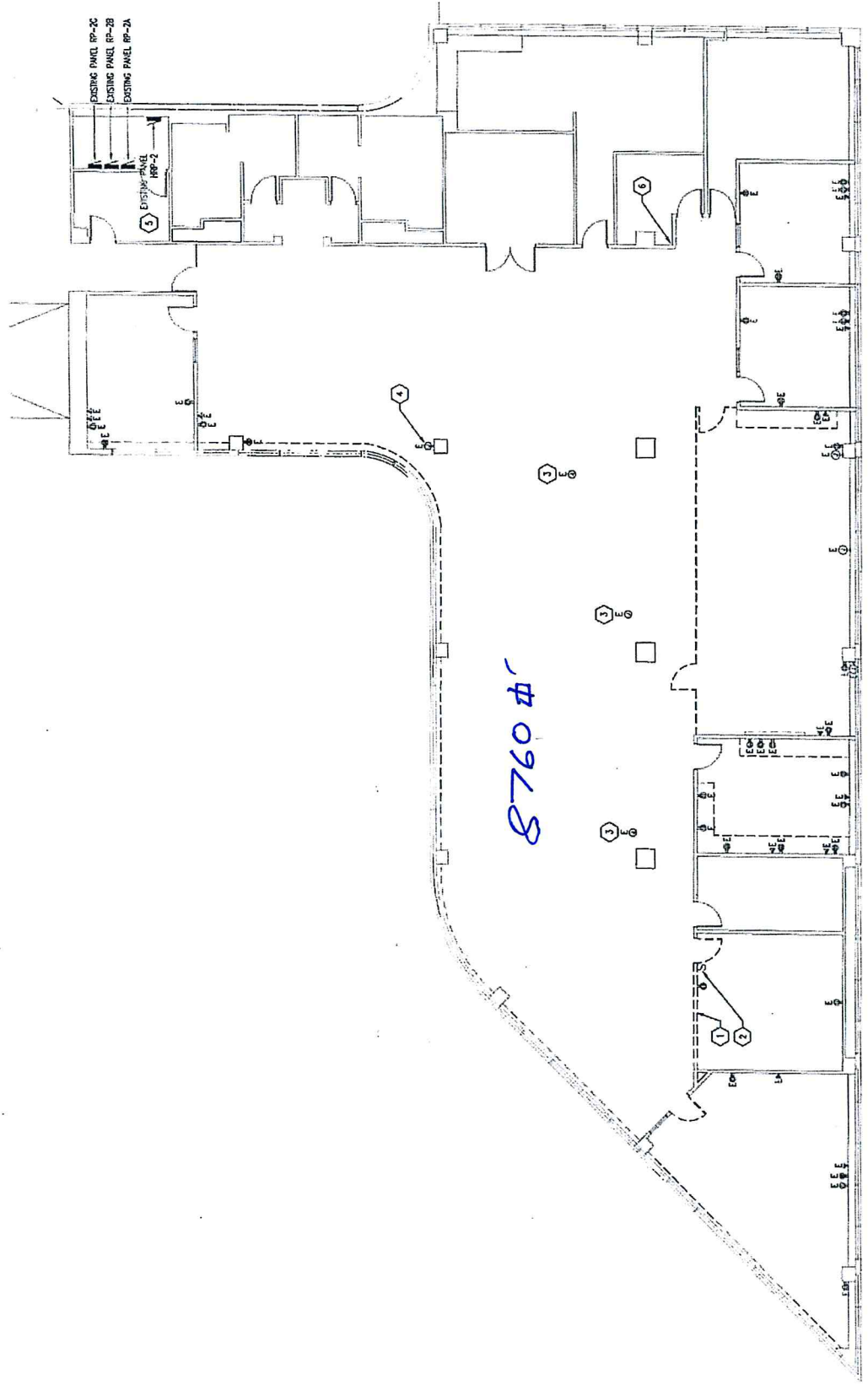
ED-102

2016-037

SPARROW HEALTH SYSTEM
IT EXPANSION 2nd & 3rd FLOORS EAST
1301 N. HAGADORN,
EAST LANSING, MICHIGAN 48823

SECOND FLOOR ELECTRICAL DEMOLITION

8760 #



MANOTIEgroup
ARCHITECTS
8700 W. M. Drive
Livonia, MI 48150
1-810-325-5277
www.manotiegroup.com

CLARK TROWBRIDGE
REGISTERED PROFESSIONAL ENGINEER
1301 N. HAGADORN
EAST LANSING, MI 48823
1-810-325-5277

DATE: 04.23.2015 05:50 PM CONSTRUCTION

NO. 102
REV. 1
REV. 2
REV. 3