



For lease

Industrial outdoor storage
6001 N 50th St., Tampa, FL 33610

 **JLL** SEE A BRIGHTER WAY

6001 N 50th St., Tampa, FL

Highlights

| | |
|--------------------------|--|
| Available | Immediately |
| Acres | 3.67 |
| Sq.Ft. | 11,309 SF total |
| Construction | Metal |
| Zoning | CI - Industrial |
| Grade Level Doors | 6 total |
| Clear Height | 16' - 20' |
| Site Features | Three (3) separate buildings, fenced, lit, security system |

3 Separate Buildings (11,309 SF total)

- 6,930 sf
 - 18' clear height
 - 2 grade-level doors (15'x16')
- 1,490 sf
 - 16' clear height
 - 1 grade-level door (10'x12')
- 2,889 sf
 - 20' clear height
 - 2 grade-level doors (14'x14')
 - 1 grade-level door (10'x12')

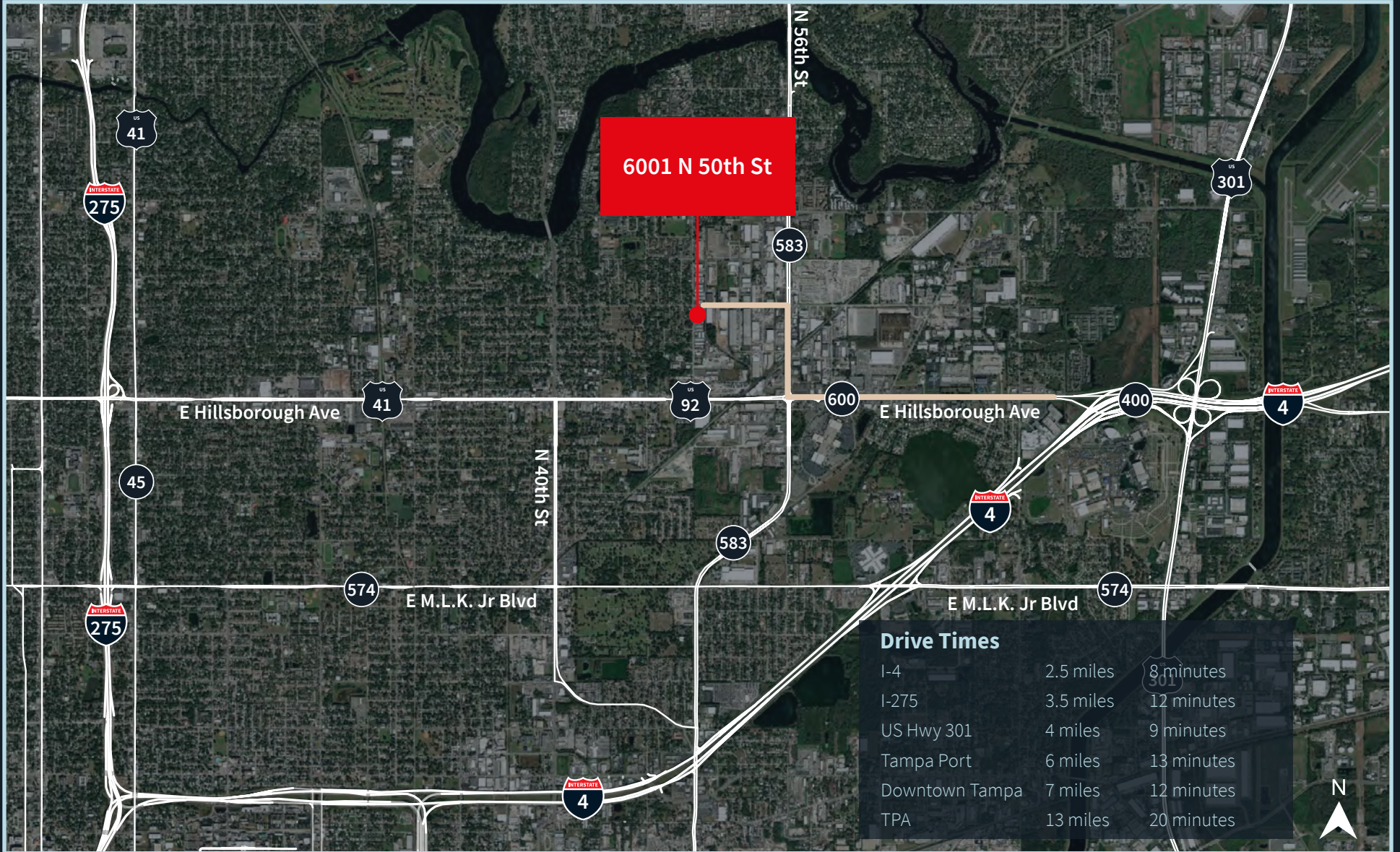


6001 N 50th St., Tampa, FL

Photos



Access Map





JLL

Pete Cecora, SIOR

Senior Managing Director

+1 813 387 1297

peter.cecora@jll.com

Olivia Brock

Associate

+1 813 387 1320

olivia.brock@jll.com