

# 39-34 43rd Street

Long Island City, Queens, New York

38,000 SF Space + 30,000 SF Yard | Heated and Air Conditioned



## Contact Us

**Matthew Giordano**

Senior Associate

+1 718 289 7721

matthew.giordano@cbre.com

**Joseph Fabrizi**

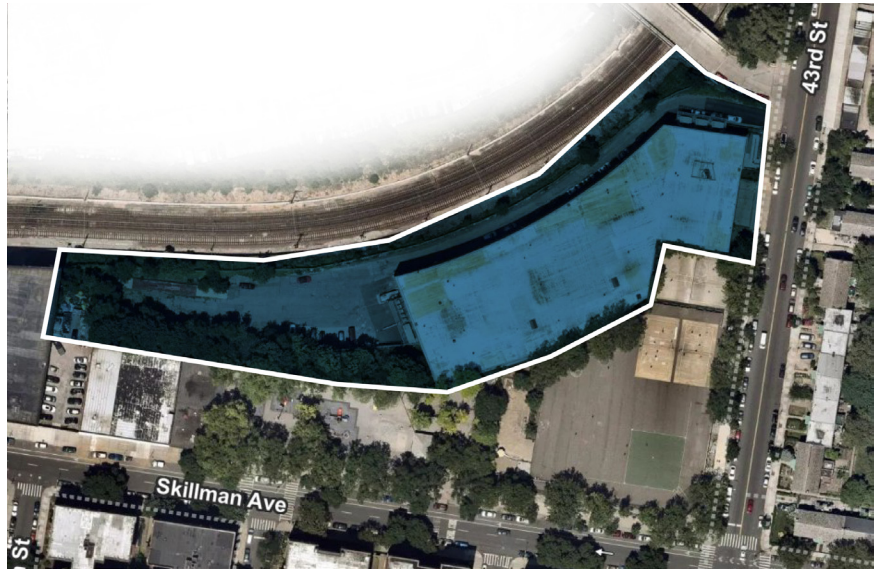
Executive Vice President

+1 212 984 8359

joseph.fabrizi@cbre.com

# Property Information

- + Sublease Space: 38,000 SF
- + Yard Space: 30,000 SF
- + Lease Expiration: February 2031  
(7 years remaining)
- + Block/Lot: 183/250
- + Zoning: M1-1
- + Loading docks: 2
- + Ceiling Height: 20'
- + Tenant Share of Building Expenses: 39%
- + Tax Base Year 2017
- + Heated and Air Conditioned Space

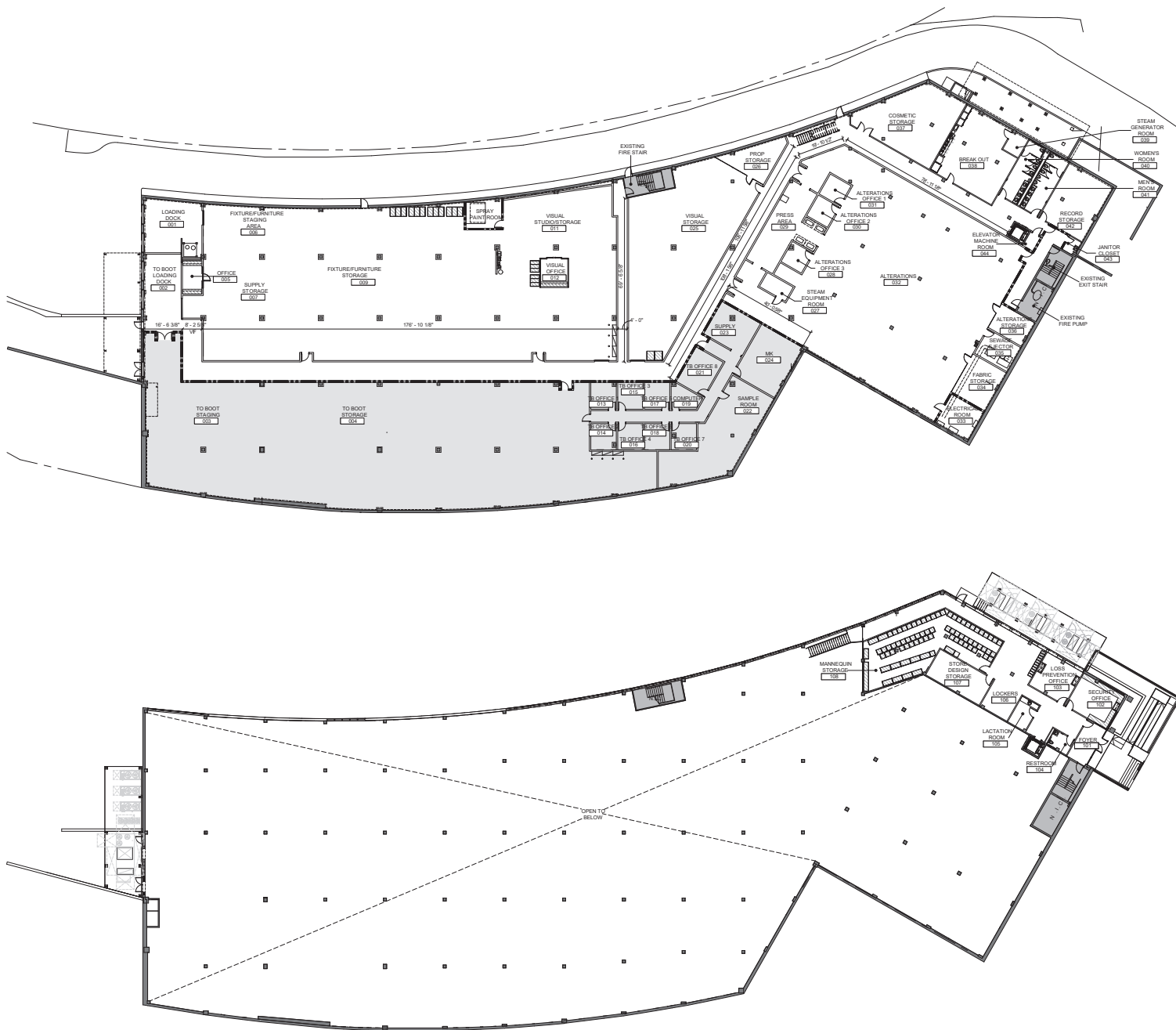


## Contact Us

**Matthew Giordano**  
Senior Associate  
+1 718 289 7721  
matthew.giordano@cbre.com

**Joseph Fabrizi**  
Executive Vice President  
+1 212 984 8359  
joseph.fabrizi@cbre.com

# Floor Plans



## Contact Us

**Matthew Giordano**  
Senior Associate  
+1 718 289 7721  
matthew.giordano@cbre.com

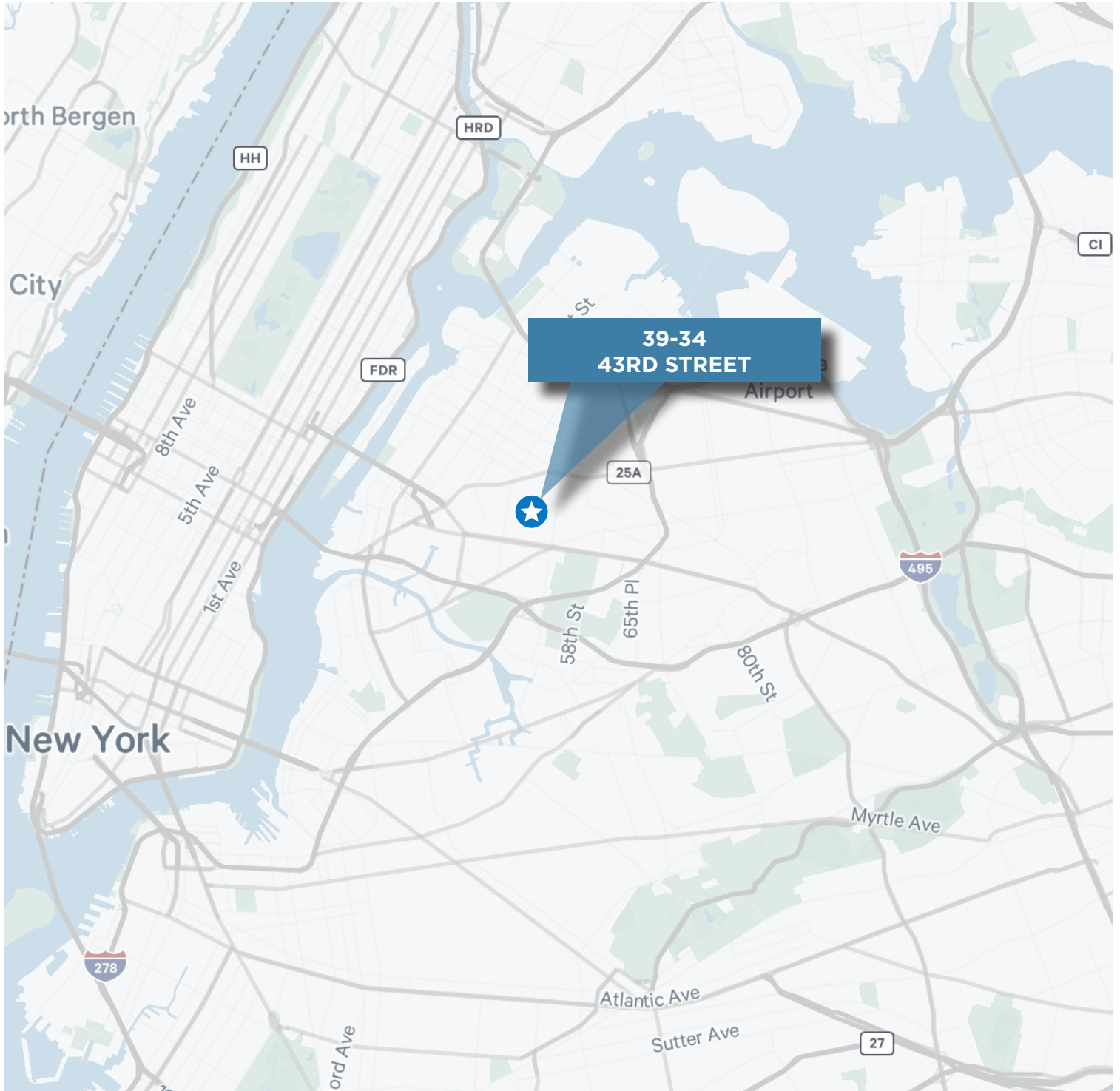
**Joseph Fabrizi**  
Executive Vice President  
+1 212 984 8359  
joseph.fabrizi@cbre.com



# 39-34 43rd Street

Long Island City, Queens, New York

# For Sublease



© 2024 CBRE, Inc. All rights reserved. This information has been obtained from sources believed reliable but has not been verified for accuracy or completeness. CBRE, Inc. makes no guarantee, representation or warranty and accepts no responsibility or liability as to the accuracy, completeness, or reliability of the information contained herein. You should conduct a careful, independent investigation of the property and verify all information. Any reliance on this information is solely at your own risk. CBRE and the CBRE logo are service marks of CBRE, Inc. All other marks displayed on this document are the property of their respective owners, and the use of such marks does not imply any affiliation with or endorsement of CBRE. Photos herein are the property of their respective owners. Use of these images without the express written consent of the owner is prohibited.