

**FOR
LEASE**

7 SAINT MARK STREET AUBURN, MA



5,200 SF WAREHOUSE

MEDICAL WAREHOUSE WITH
LARGE PAVED LOT

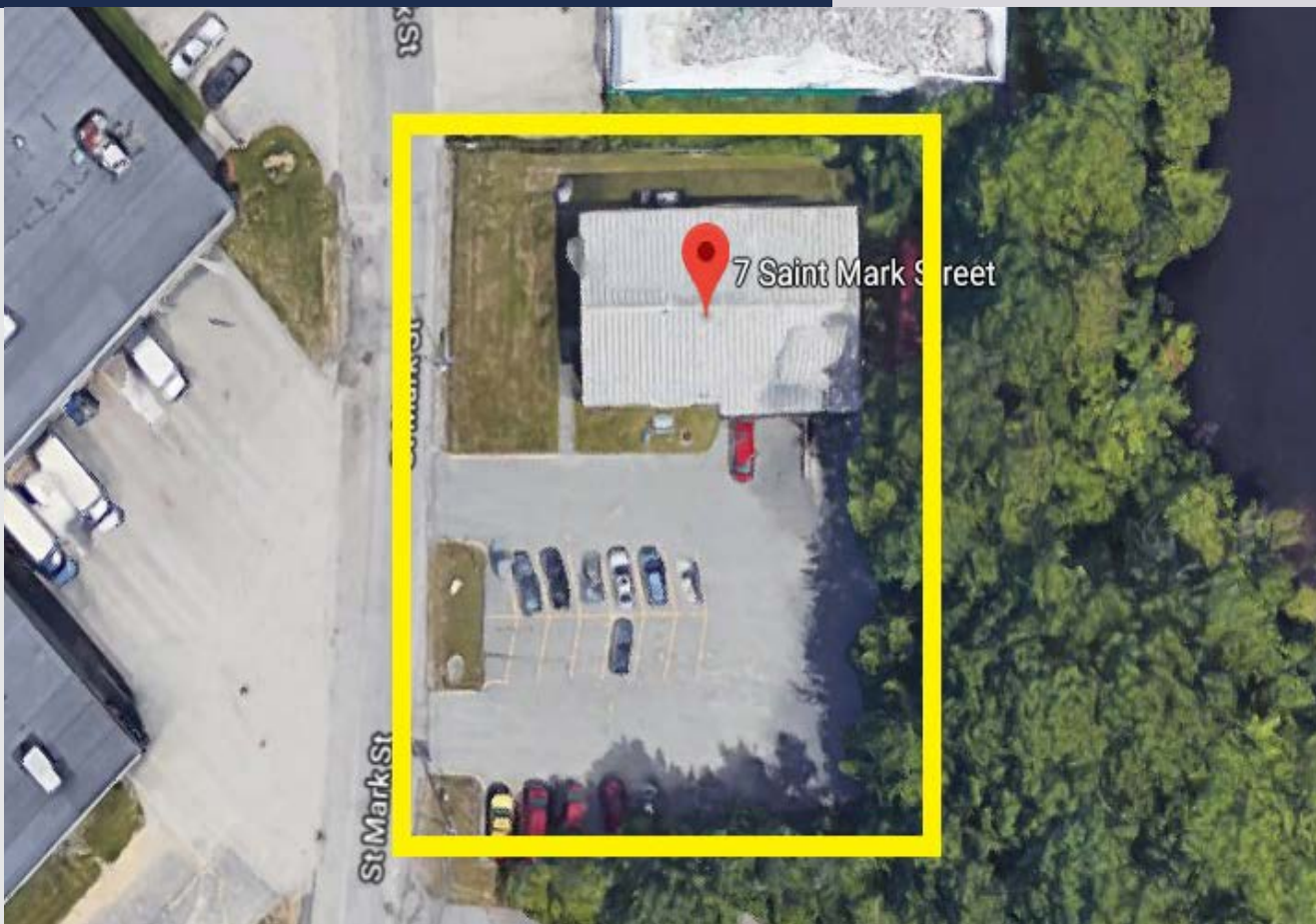
» As the exclusive agent, The Stubblebine Company is pleased to offer 7 Saint Mark Street:

Salient details include:

- 17'+ Clear Height
- Oversized Drive-in AND Tailboard Loading
- Large Paved Lot



EXCLUSIVE LISTING AGENT
THE STUBBLEBINE COMPANY
CORFAC INTERNATIONAL

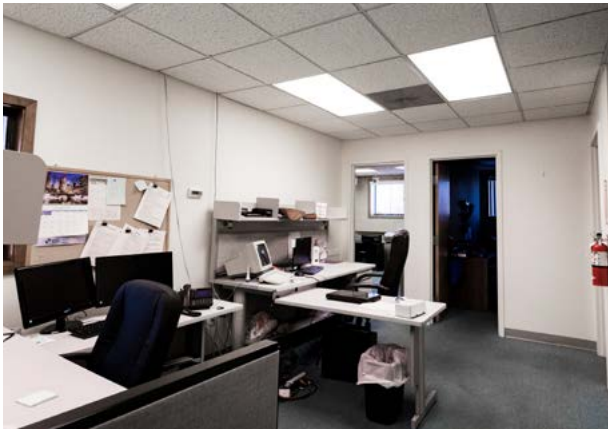


PROPERTY SPECIFICATIONS

BUILDING SIZE:	5,200 SF
LAND AREA:	1.6 ACRES
ZONING:	GENERAL INDUSTRIAL G-I
HEIGHT:	16 (+/-) TO 19 (+/-)
YEAR BUILT:	1982
WATER:	TOWN
SEWER:	TOWN
LIGHTING:	FLOURESCENT & INCANDESCENT
PARKING:	25+ PASSENGER CAR SPACES
NNN EXPENSES:	\$3.85 PER SF



EXCLUSIVE LISTING AGENT
THE STUBBLEBINE COMPANY
CORFAC INTERNATIONAL



EXCLUSIVE LISTING AGENT
THE STUBBLEBINE COMPANY
CORFAC INTERNATIONAL

LOCATION



EXCLUSIVE LISTING AGENT
 THE STUBBLEBINE COMPANY
 CORFAC INTERNATIONAL

CONTACT:

DAVID SKINNER

617-999-0057

AARON M. RACETTE

774-279-5184

- 8 Miles to Worcester, MA
- 30 Miles to Leominster, MA
- 46 Miles to Boston, MA
- 48 Miles to Springfield, MA
- 59 Miles to Hartford, CT