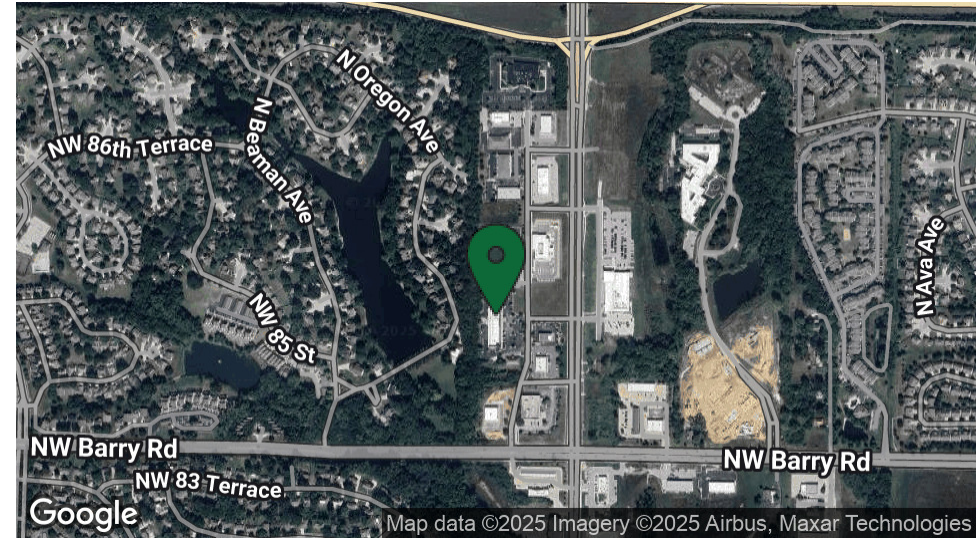


# BARRY PLAZA LAND

8560 NORTH GREEN HILLS ROAD, KANSAS CITY, MO 64154

LAND FOR SALE



## PROPERTY DESCRIPTION

Barry Plaza offers two available lots ideally positioned along Green Hills Road and MO-152, providing excellent visibility, convenient access, and strong traffic counts. Lot 12C:  $\pm 0.37$  acres, Lot 12A:  $\pm 0.74$  acres.

Surrounded by established and emerging neighborhood retail centers, dining options, services, and steady residential growth, this location sits within an area experiencing ongoing development activity. The setting and land characteristics make the lots suitable for a range of potential uses, including retail, office, or other service-oriented commercial development.

## PROPERTY HIGHLIGHTS

- Prime location along Green Hills Rd & MO-152
- Two available lots: 0.37 AC and 0.74 AC
- High-activity area with strong surrounding development
- Flexible commercial use potential
- Easy access to major roads and neighborhood amenities

## OFFERING SUMMARY

Zoning:	General Commercial
Lot 12C Size:	0.37 Acres (+/-)
Lot 12A Size:	0.74 Acres (+/-)

**Andrew Danner**

Broker  
816.612.5191  
O: 816.612.5191  
Andrew@windfieldrealestate.com

**Ben Nelson, CCIM**

Senior Associate  
816.868.8473  
O: 816.612.5191  
Ben@windfieldrealestate.com

**WINDFIELD**  
**REAL ESTATE**  
DEVELOPMENT • SALES • LEASING

THE INFORMATION PRESENTED HERE IS INTENDED SOLELY FOR REFERENCE PURPOSES FOR PROSPECTIVE PARTIES. ANY POTENTIAL BUYER SHOULD INDEPENDENTLY VERIFY ALL PROPERTY INFORMATION WITHOUT RELYING ON THE PROPERTY OWNER OR THEIR REPRESENTATIVES. OWNER AND WINDFIELD REAL ESTATE, LLC DO NOT MAKE ANY REPRESENTATIONS OR WARRANTIES REGARDING THE ACCURACY AND COMPREHENSIVENESS OF THE INFORMATION PROVIDED. IT IS ADVISABLE TO CONTACT LOCAL GOVERNMENT AGENCIES TO CONFIRM ZONING CLASSIFICATIONS, AND WE DO NOT ASSUME ANY RESPONSIBILITY.

windfieldrealestate.com



# BARRY PLAZA LAND

8560 NORTH GREEN HILLS ROAD, KANSAS CITY, MO 64154

AERIAL MAP





# BARRY PLAZA LAND

8560 NORTH GREEN HILLS ROAD, KANSAS CITY, MO 64154

AVAILABLE LAND



**Andrew Danner**

Broker  
816.612.5191  
O: 816.612.5191  
Andrew@windfieldrealstate.com

**Ben Nelson, CCIM**

Senior Associate  
816.868.8473  
O: 816.612.5191  
Ben@windfieldrealstate.com

**WINDFIELD**  
**REAL ESTATE**  
DEVELOPMENT • SALES • LEASING

THE INFORMATION PRESENTED HERE IS INTENDED SOLELY FOR REFERENCE PURPOSES FOR PROSPECTIVE PARTIES. ANY POTENTIAL BUYER SHOULD INDEPENDENTLY VERIFY ALL PROPERTY INFORMATION WITHOUT RELYING ON THE PROPERTY OWNER OR THEIR REPRESENTATIVES. OWNER AND WINDFIELD REAL ESTATE, LLC DO NOT MAKE ANY REPRESENTATIONS OR WARRANTIES REGARDING THE ACCURACY AND COMPREHENSIVENESS OF THE INFORMATION PROVIDED. IT IS ADVISABLE TO CONTACT LOCAL GOVERNMENT AGENCIES TO CONFIRM ZONING CLASSIFICATIONS, AND WE DO NOT ASSUME ANY RESPONSIBILITY.

windfieldrealstate.com



# BARRY PLAZA LAND

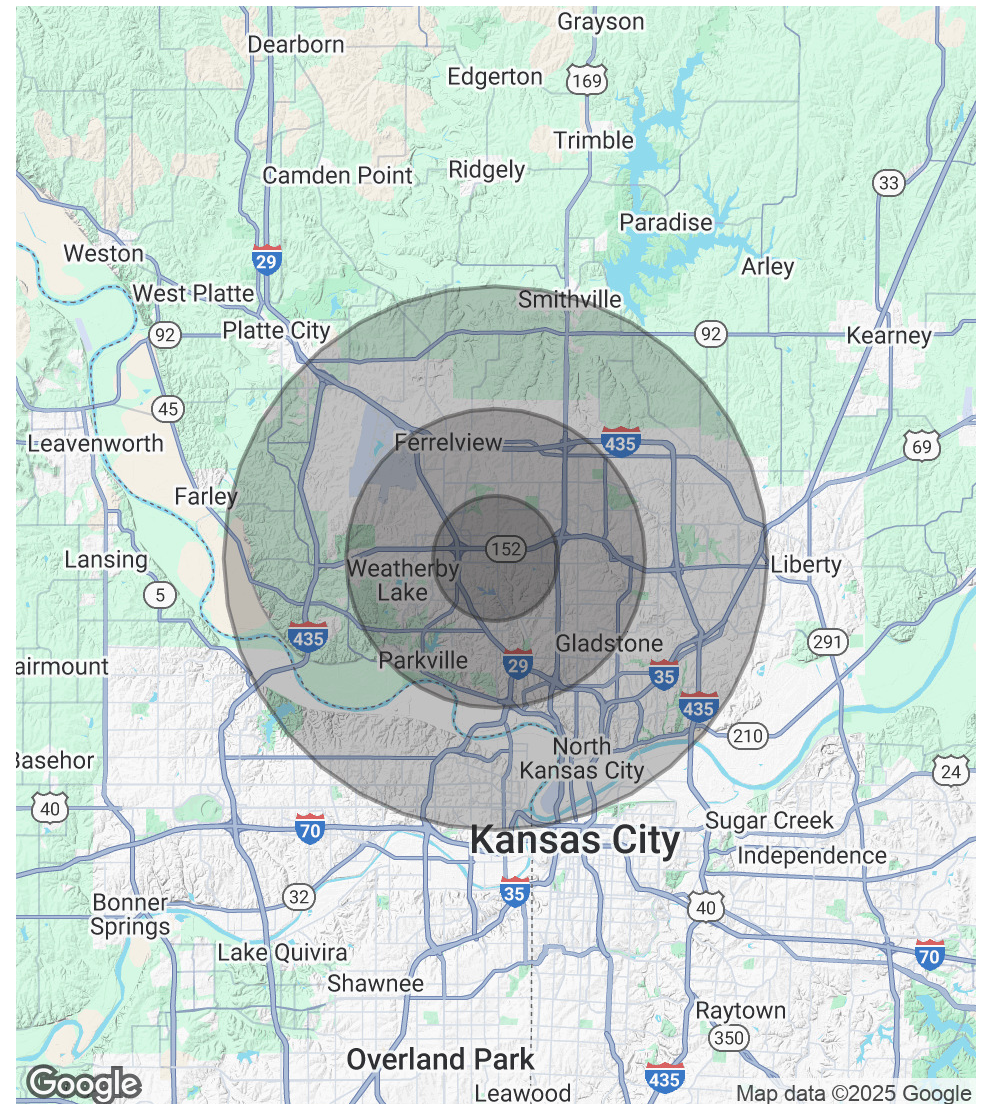
8560 NORTH GREEN HILLS ROAD, KANSAS CITY, MO 64154

LAND FOR SALE

POPULATION	2.3 MILES	5.5 MILES	10 MILES
Total Population	36,045	153,642	304,861
Average Age	39	39	39
Average Age (Male)	38	38	38
Average Age (Female)	40	40	40

HOUSEHOLDS & INCOME	2.3 MILES	5.5 MILES	10 MILES
Total Households	15,669	62,805	121,746
# of Persons per HH	2.3	2.4	2.5
Average HH Income	\$105,142	\$108,864	\$104,233
Average House Value	\$342,238	\$357,988	\$320,059

Demographics data derived from AlphaMap



**Andrew Danner**

Broker  
816.612.5191  
O: 816.612.5191  
Andrew@windfieldrealestate.com

**Ben Nelson, CCIM**

Senior Associate  
816.868.8473  
O: 816.612.5191  
Ben@windfieldrealestate.com

**WINDFIELD**  
**REAL ESTATE**  
DEVELOPMENT • SALES • LEASING

THE INFORMATION PRESENTED HERE IS INTENDED SOLELY FOR REFERENCE PURPOSES FOR PROSPECTIVE PARTIES. ANY POTENTIAL BUYER SHOULD INDEPENDENTLY VERIFY ALL PROPERTY INFORMATION WITHOUT RELYING ON THE PROPERTY OWNER OR THEIR REPRESENTATIVES. WINDFIELD REAL ESTATE, LLC DO NOT MAKE ANY REPRESENTATIONS OR WARRANTIES REGARDING THE ACCURACY AND COMPREHENSIVENESS OF THE INFORMATION PROVIDED. IT IS ADVISABLE TO CONTACT LOCAL GOVERNMENT AGENCIES TO CONFIRM ZONING CLASSIFICATIONS, AND WE DO NOT ASSUME ANY RESPONSIBILITY.

windfieldrealestate.com