



EQT | EXETER

LEED Silver Certified Cross Dock Facility in Premier I-80 Business Park



4101 Olympic Boulevard

Joliet, IL

Building Size: 339,741 SF | 254,672 SF of Industrial Space Available

VISIT EQTEXETER.COM

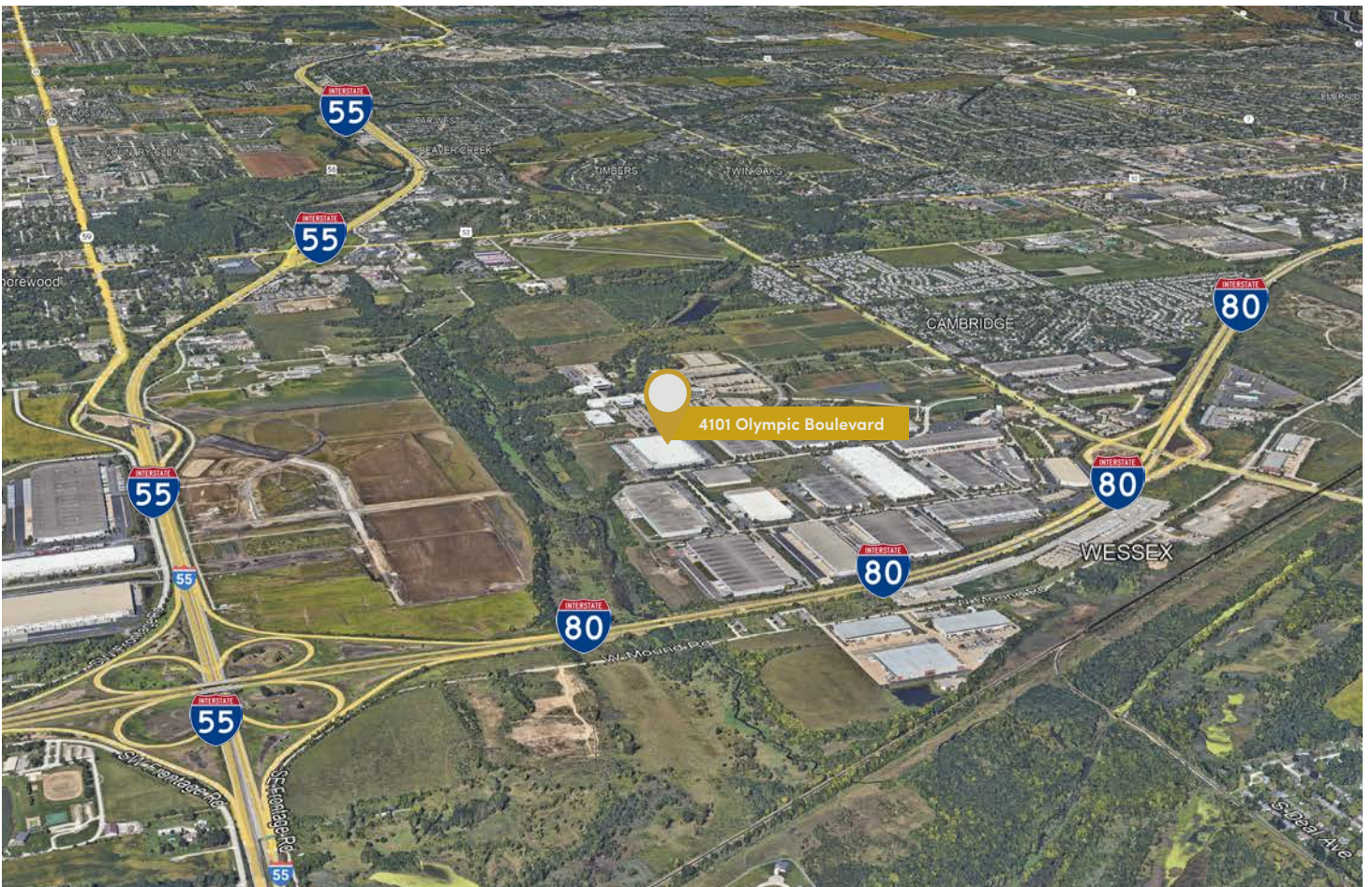
4101 Olympic Boulevard

Joliet, IL

Building Size: 339,741 SF | Building Availability: 254,672 SF

Building Specifications

- Building: 339,741 SF
- Available: 254,672 SF
- Clear Height: 32'
- Office SF: 5,129 SF
- Power: 800a 480v
- Lighting: LED
- Sprinkler: ESFR
- Dock Doors: (30) 9'x10'
- Drive-in Doors: (1) 12'x14'
- Column Spacing: 40'x48' with 60' speed bays
- Car Parking: 137
- Trailer parking: 40
- 2008 Construction
- Rock Run Business Park
- Access to I-80/Intermodal in minutes (6 minutes/3 miles)



4101 Olympic Boulevard

Joliet, IL

Building Size: 339,741 SF | Building Availability: 254,672 SF



4101 Olympic Boulevard

Joliet, IL

Building Size: 339,741 SF | Building Availability: 254,672 SF

