

DE LENDRECIE'S SQUARE

624 MAIN AVENUE, FARGO, ND 58102


GOLDMARK™
COMMERCIAL REAL ESTATE INC



FOR LEASE

BEAUTIFUL DOWNTOWN BUILDING WITH RETAIL OR OFFICE SPACE

Space Available: 471 - 1,042 SF
Gross Monthly Rent: \$590 - \$875
Tenant Expenses: Electricity

Paul Campbell | 701.893.2826

paul.campbell@goldmark.com

Goldmark Commercial Real Estate

www.goldmarkcommercial.com

DE LENDRECIE'S SQUARE

624 MAIN AVENUE, FARGO, ND 58102



SPACE AVAILABLE | GROSS MONTHLY RENT

Suite 2B- 1,042 SF | \$875

Suite 3A - 471 SF | \$590

Suite 9 - 537 SF | \$750

TENANT EXPENSES

Electricity

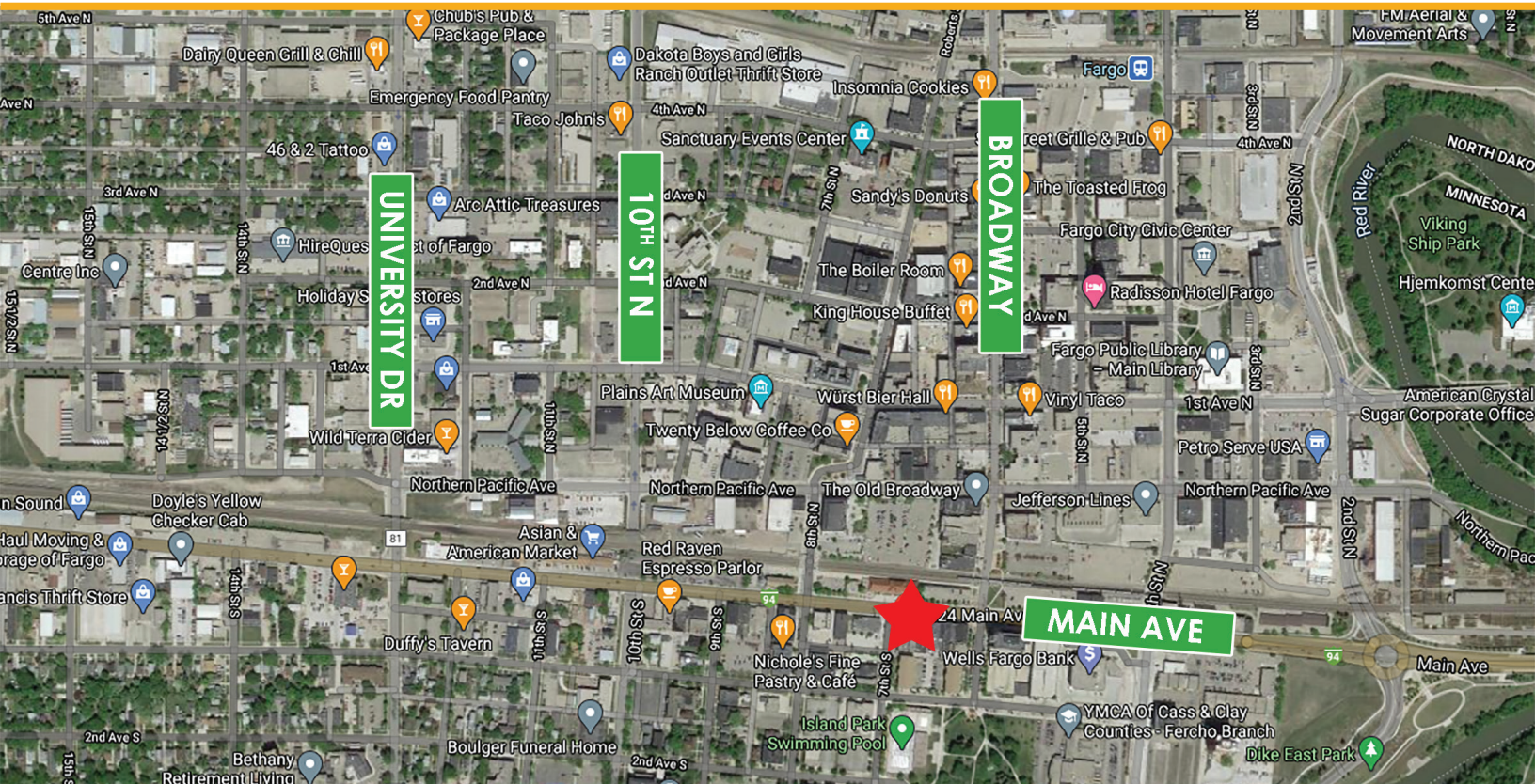
PROPERTY DESCRIPTION:

The historic de Lendrecie's building is located downtown Fargo between Main Avenue and Island Park. The building includes 127 residential apartments along with office and retail space. Tenants also have access to use the building's underground parking garage. Space available for office or retail, perfect for both startup or established businesses. Neighboring businesses include a wide variety of bars, restaurants, coffee shops, and professional businesses.

NEIGHBORS:

Rhombus Guys
Wimmer's Diamonds
Island Park
Bank of the West

This information has been secured from sources we believe to be reliable, but we make no representation or warranties, expressed or implied, as to the accuracy of the information. Interested parties should conduct their own independent investigations and rely only on those results.



DE LENDRECIE'S SQUARE

624 MAIN AVENUE, FARGO, ND 58102

GOLDMARK™
COMMERCIAL REAL ESTATE INC

INTERIOR PHOTOS

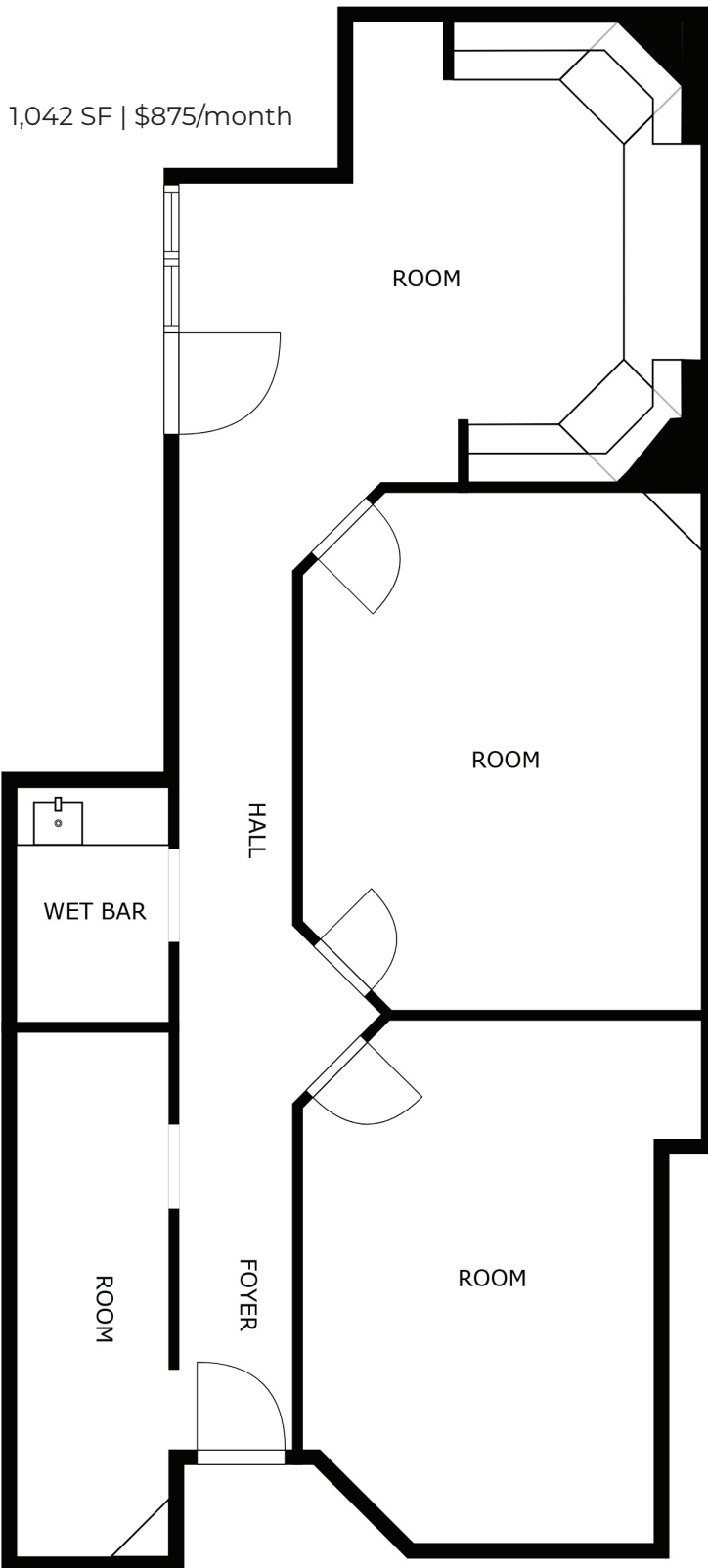


DE LENDRECIE'S SQUARE

624 MAIN AVENUE, FARGO, ND 58102

GOLDMARK™
COMMERCIAL REAL ESTATE INC

SUITE 2B



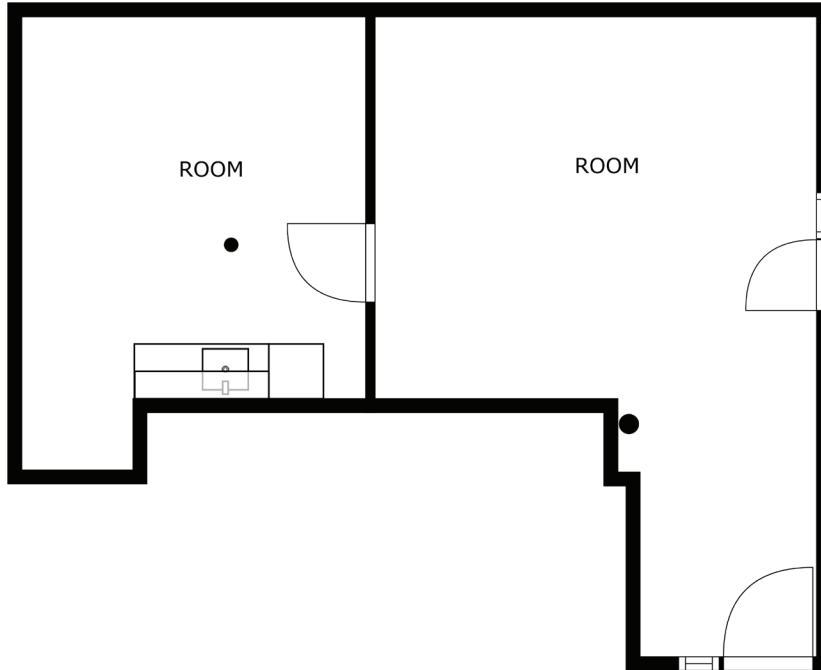
DE LENDRECIE'S SQUARE

624 MAIN AVENUE, FARGO, ND 58102

GOLDMARK™
COMMERCIAL REAL ESTATE INC

SUITE 3A

471 SF | \$590/month



DE LENDRECIE'S SQUARE

624 MAIN AVENUE, FARGO, ND 58102

GOLDMARK™
COMMERCIAL REAL ESTATE INC

SUITE 9

537 SF | \$750/month

